



MS

# MACA STONE

---

"Nature at your fingertips."

STONE DESIGN

[www.macastonedecor.com](http://www.macastonedecor.com)

# Contents

3	Intro	16	Gallery
4	Maca Stone	17	Facades
5	Texture	18	Residence
6	Tips	19	Office
7	<b>Collections</b>	20	Hotel
8	Slate	21	Restaurant
10	Marble	22	Translucent
12	Sandstone	23	Exterior
14	Translucent	24	Shower
		25	Cabinetry
		26	Furniture
		27	Art
		28	Contact



Slate



Marble



Sandstone



Translucent





# Intro

Our unique product is entirely hand-peeled from genuine slate, marble, and sandstone. Unlike artificial alternatives, it maintains the 100% natural stone texture on its surface.

Our flexibility sets us apart, allowing it to be effortlessly applied to curved surfaces, giving architects and designers unparalleled creative freedom. Its waterproof nature means it's suitable for both indoor and outdoor applications, including wet areas like shower walls and backsplashes.

Additionally, our product is incredibly lightweight, making transportation and installation a breeze. In a time when labor and transportation costs are soaring, our solution enables quick and efficient installation, ideal for covering extensive areas.

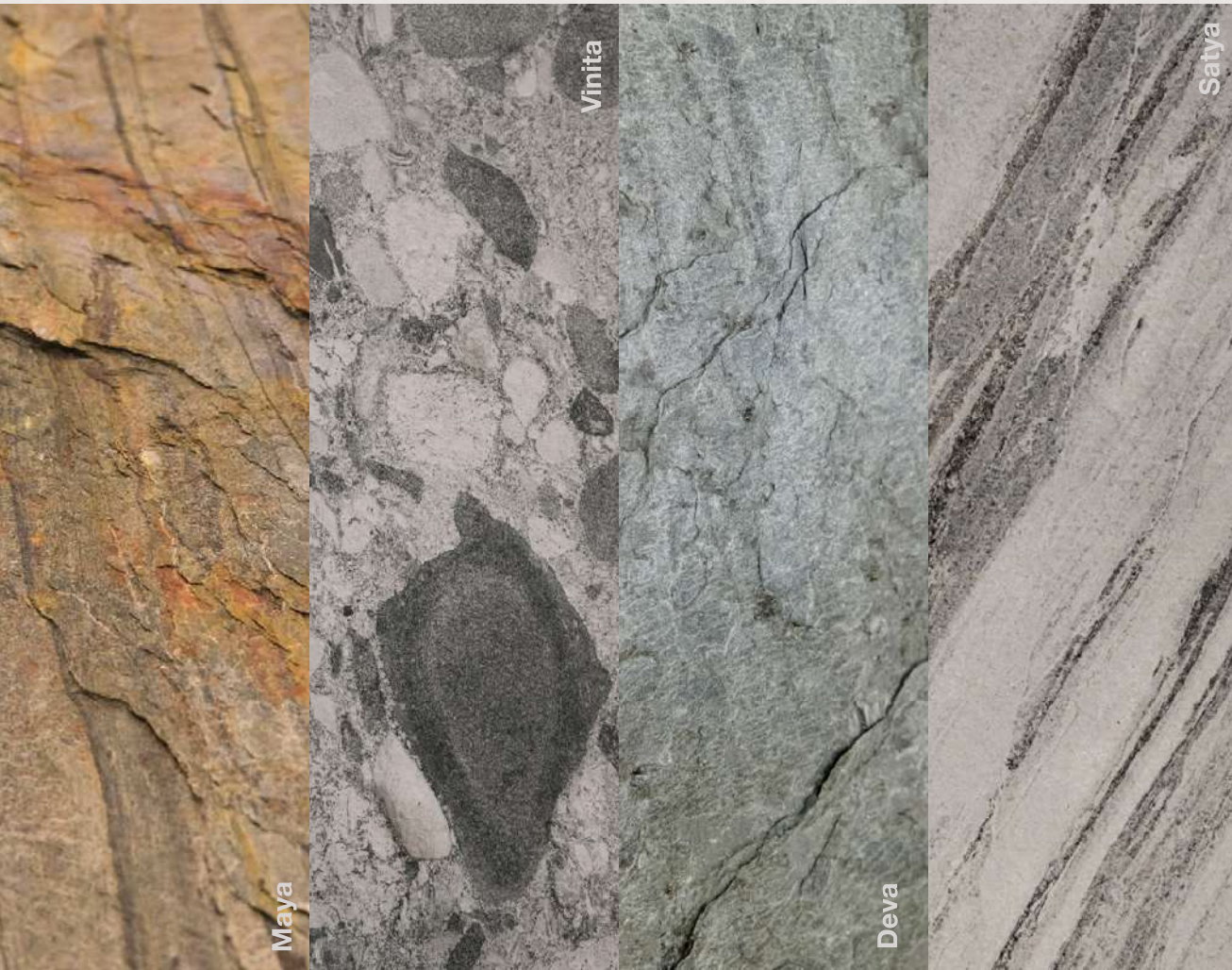


## MACA Stone

Organic natural stone is a valuable resource that is both durable and long-lasting. However, traditional stone processing methods have not evolved much over the years, resulting in outdated and inefficient techniques. At MACA, we have revolutionized the industry by developing a patented technology that allows us to extract ultra-light and ultra-thin slabs of some of the world's most stunning natural stones in an eco-friendly and sustainable way.

Our MACA natural stone slabs are state-of-the-art in both weight and appearance, with the natural finish and texture of the organic stone preserved. Despite being only 1.5mm-4mm thick, our product boasts the same durability and aesthetic appeal as traditional slabs, without their excess weight and environmental waste. Additionally, our translucent collection can transmit light, giving the stone a naturally warmer appearance, making it perfect for both residential and commercial use.





## Texture

Experience timeless elegance and natural beauty with our exquisite collections. From the rich, earthy tones of slate to the luxurious veining of marble, and the inviting textures of sandstone, each collection offers a distinct choice for every design aesthetic. Explore our captivating translucent collection, where light and stone create mesmerizing visual effects. Discover endless possibilities for your next project.

## Tips

Tips to help you select your MACA stone product:

### 1. Application

Before selecting a MACA stone product, consider the location where you want to install the product and the purpose it serves. You should choose a product that is suitable for your specific needs.

### 2. Price

Choosing one of MACA's smaller sizes can sometimes be more cost-effective than our larger sizes, especially when dealing with a large area. Smaller sizes offer increased flexibility and can help you maximize the effect of your project while staying within your budget.

### 3. Imperfection is perfection

Don't get hung up on finding the "perfect" product - it simply doesn't exist. At MACA, we embrace the natural beauty of each stone slab, meaning no two pieces are identical. While you may notice slight variations like dents or marks on the surface, rest assured that each product is strong and durable, and backed by our lifetime warranty.

### 4. Flexibility

Choose a MACA stone product that offers flexibility in its installation and usage. Consider a product that can easily be cut or reshaped to fit your needs. Opt for a product that you can easily expand or adjust as per your requirements, allowing smooth and effective usage of the product.







# Collections

Experience timeless elegance and natural beauty with each of our exquisite collections. From the rich, earthy tones of slate and luxurious veining of marble to the minimalist appeal of sandstone and visually captivating translucent products, each collection offers a variety of choices for every design aesthetic. Discover endless possibilities for your next project.

## 1. Slate Collection

Our most visually diverse collection, MACA's slate products include everything from crystal white slabs dominated by delicate pink and gold clusters, to dark gray stones with either geometric or abstract veining, and everything in between. Bold and sophisticated, the slate collection is suitable for a variety of indoor and outdoor applications, including fireplace surrounds, accent walls, exterior cladding and more.

### Thickness

- 1/16" to 1/8" (1.5-3.0mm)

### Size Available

- 24" x 48" (3.3-4.4 lbs)
- 48" x 96" (13.2-17.6 lbs)
- 48" x 120" (16.5-22 lbs)

### Sample Available

- 12" x 24"







## Slate Collection

### Features

- Ultra-lightweight compared to traditional stone slabs
- 100% natural slate surface
- 100% waterproof
- Suitable for both indoor & outdoor use
- Can also be applied to curved surfaces

## 2. Marble Collection

For an elegant and chic aesthetic, look no further than our marble collection. Clean and classy, each stone's intricate veining and polished finish exudes timeless beauty, with hints of both a classic 1920s look and nods to the avant garde. From pearl white to richly colorful stones, any of the products in this collection will elevate its chosen space to a new high-end level.

### Thickness

- 1/16" to 1/8" (2.0-5.0mm)

### Size Available

- 24" x 48" (4.4-6.6 lbs)
- 48" x 96" (17.6-26.4 lbs)
- 48" x 120" (22-33 lbs)

### Sample Available

- 12" x 24"



Isvara



Vinita

Satya



## Marble Collection

### Features

- Ultra-lightweight compared to traditional stone slabs
- 100% natural sandstone surface
- 100% waterproof
- Suitable for both indoor & outdoor use
- Can also be applied to curved surfaces





### 3. Sandstone Collection

Each product in our sandstone collection sports a timeless beauty, with an inherent earthiness that further reinforces the stone's hardness. Warm tones bring coziness and a touch of tranquility to a space, transforming it into an area that provides a welcome respite from the bustling outside world. Products in the sandstone collection are popular choices for everything from museums and houses of worship to some of the world's most stunningly minimalist homes.

#### Thickness

- 1/16" to 1/8" (2.0-4.0mm))

#### Size Available

- 24" x 48" (5.5 lbs)

#### Sample Available

- 12" x 24"





## Sandstone Collection

### Features

- Ultra-lightweight compared to traditional stone slabs
- 100% natural slate surface
- 100% waterproof
- Suitable for both indoor & outdoor use
- Can also be applied to curved surfaces





## 4. Translucent Collection

Transform any space with our translucent collection. Honed from ultra-thin natural slate, light filters through each of these stones, creating a warm and captivating ambiance that will elevate your design from great to truly exceptional. Illuminate a space with natural or artificial light, showcasing the stone's vivid character and making a bold visual statement that commands attention.

### Thickness

- 1/16" to 1/8" (2.0-4.0mm))

### Size Available

- 24" x 48" (4.4 lbs)
- 48" x 96" (17.6 lbs)

### Sample Available

- 12" x 24"



Surya



Deva

Prana





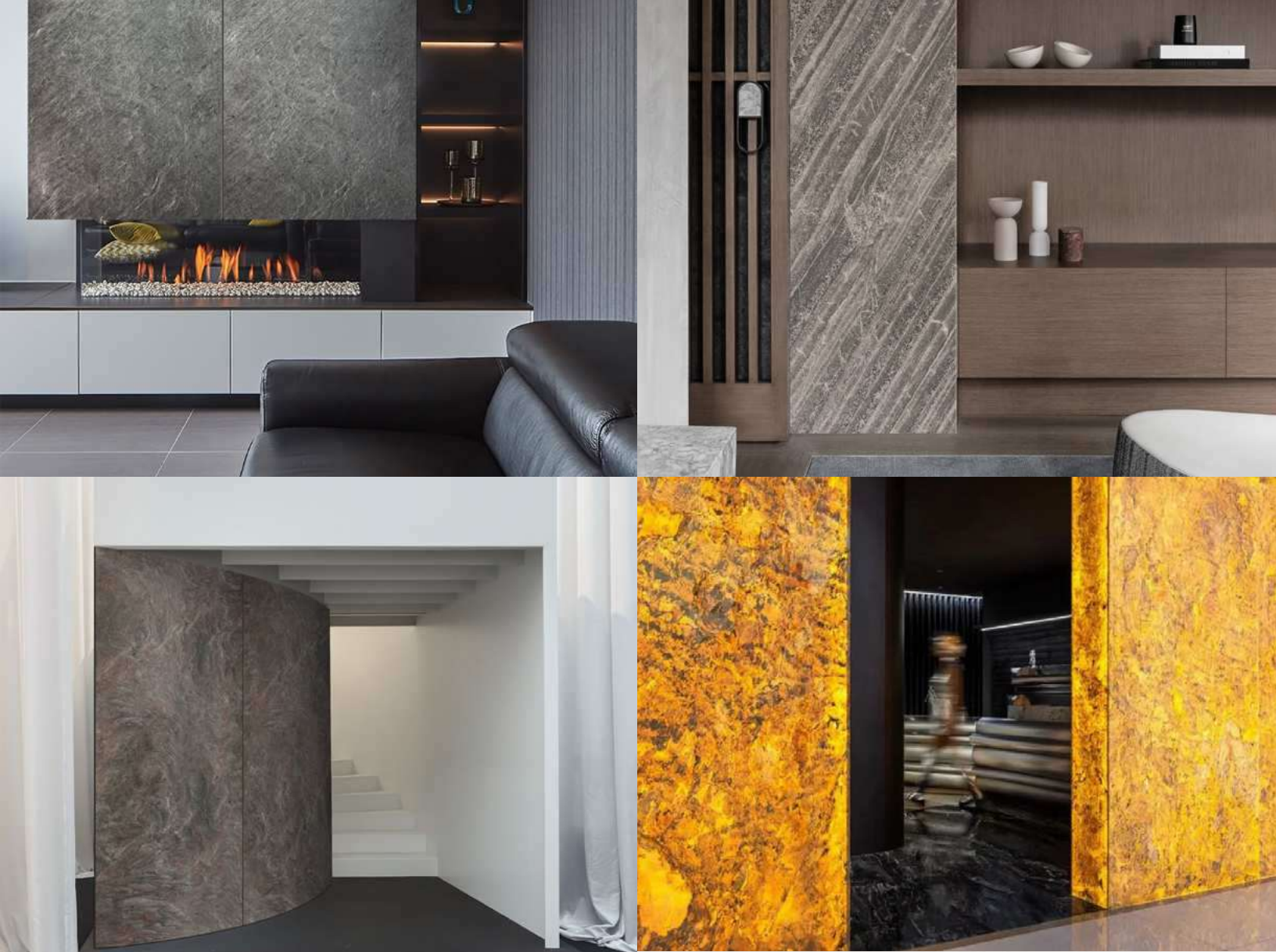
## Translucent Collection

### Features

- Ultra-lightweight compared to traditional stone slabs
- 100% natural slate surface
- 100% waterproof
- Suitable for both indoor and outdoor use
- Can also be applied to curved surfaces
- Translucent when illuminated from behind by natural or artificial light







# Gallery

Stone from each of our four collections has been used to adorn high-end boutiques, five-star hotels, michelin-star restaurants and impeccably crafted private residences. MACA slabs are versatile enough to suit your own project, however big or small use our gallery as a source of inspiration for transforming and elevating your own space.



## FEATURE WALL

### Product

Marble

### Satya

An ivory white marble defined by its thick and jagged blue-gray veins. This durable stone adds a touch of class and sophistication to any outdoor or indoor surface.







## RESIDENCE

**Product**

Slate

**Deva**

A stone giving the impression it has been smoothed over by years of water submersion, Deva marries tones of blue, gray and green for a silvery matte finish.







## OUTDOORS

**Product**

Slate - Bodhi

**Bodhi**

A slate defined by subtle gray, red and copper tones. Sprays of charcoal gray dots add rich definition to the stone.







## HOTEL

### Product

Slate - Surya

### Surya

A maximalist stone guaranteed to capture attention from everyone who views it, this marble is ideal for an accent wall or central bar area.





# RESTAURANT

## Product

Slate - Kosha

## Kosha

Elegant and sophisticated, this gray stone has a cave-like and guarded aesthetic. This is a true deep gray, with fewer color undertones than other gray stones.







## TRANSLUCENT

### Product

Translucent - Tathastu

### Tathastu

An ice blue sea furrowed by lightly golden waves, Tathastu is a dramatic stone that seduces onlookers with its fascinating combination of colors, providing them with an inner sense of calm and peacefulness.







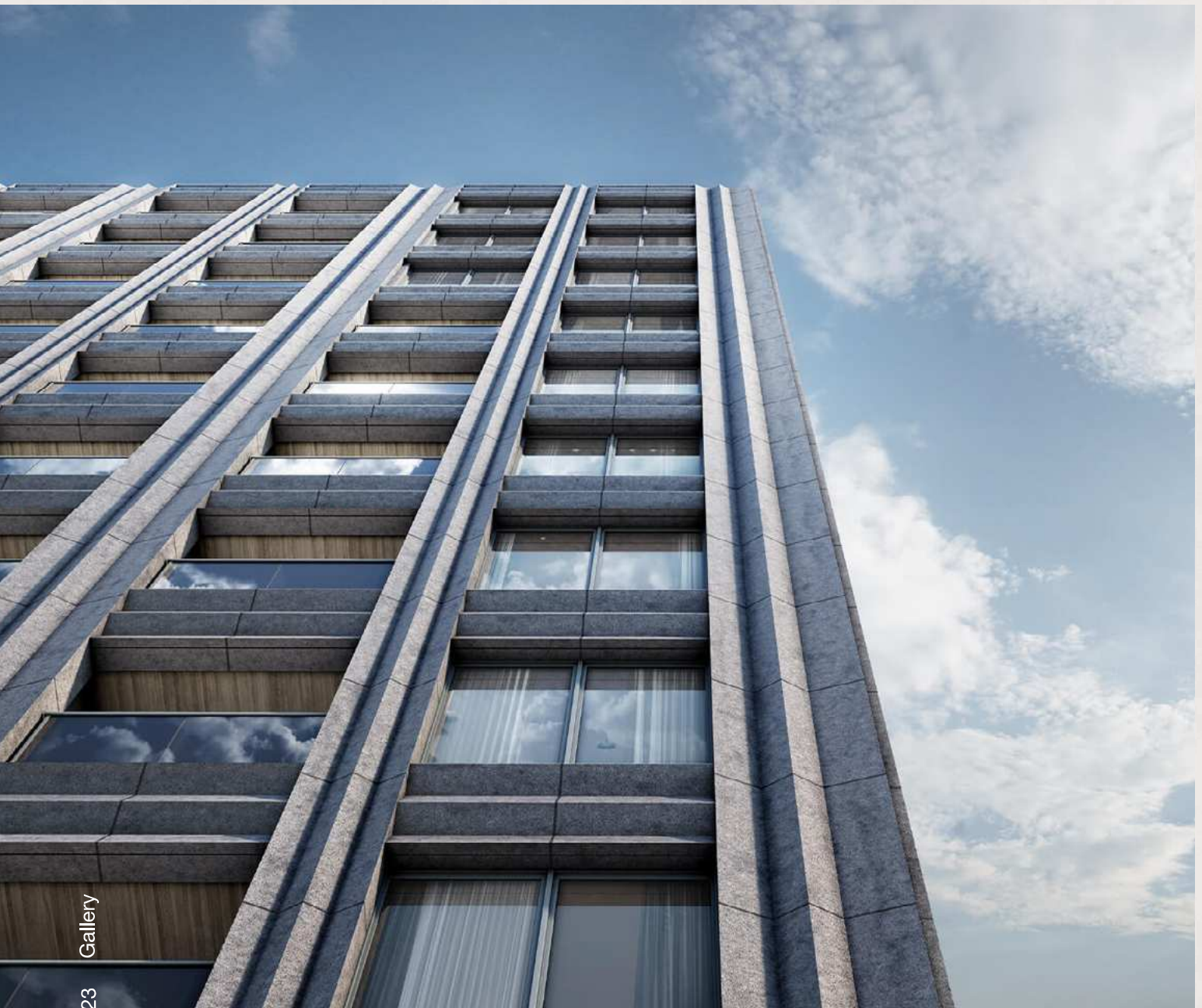
## EXTERIOR

### Product

Slate - Punya

### Yantra

Moody with subtle green and yellow tones, this slate has a gloss silver finish and is defined by raindrop-shaped markings unique to this stone.







## BATHROOM

### Product

Slate

### Harita

With deep tones of blue, green and yellow, Harita's weathered finish gives the impression that it is a particularly ancient and exotic stone.





# CABINETRY

## Product

Slate - Mantra

## Mantra

A geometric slate ideal for a sophisticated yet striking look. The stone recalls a calm night sky, with thin silver streaks adding the flair of distant galaxies.







## FURNITURE

**Product**

Slate

**Kosha**

Elegant and sophisticated, this gray stone has a cave-like and guarded aesthetic. This is a true deep gray, with fewer color undertones than other gray stones.







**ART**

**Product**

Slate

**Asita / Dhyana / Moonga / Surya / Tathastu**

An artist has utilized MACA stone ultra-thin slabs to craft a stunning piece of art that replicates the artistry of Lady Guoguo's Spring Outing from the Tang Dynasty.





# MACA STONE

"Nature at your fingertips."



## Contact Us

We appreciate your interest in our products and look forward to hearing from you.

- Phone: +1(213)-650-MACA
- Email: [contact@macastonedecor.com](mailto:contact@macastonedecor.com)
- Instagram: [www.instagram.com/macastonedecor/](https://www.instagram.com/macastonedecor/)



[www.macastonedecor.com](http://www.macastonedecor.com)