



CLADMAESTRO

AN EXQUISITE RANGE OF EXTERIOR
CLADDING SOLUTIONS



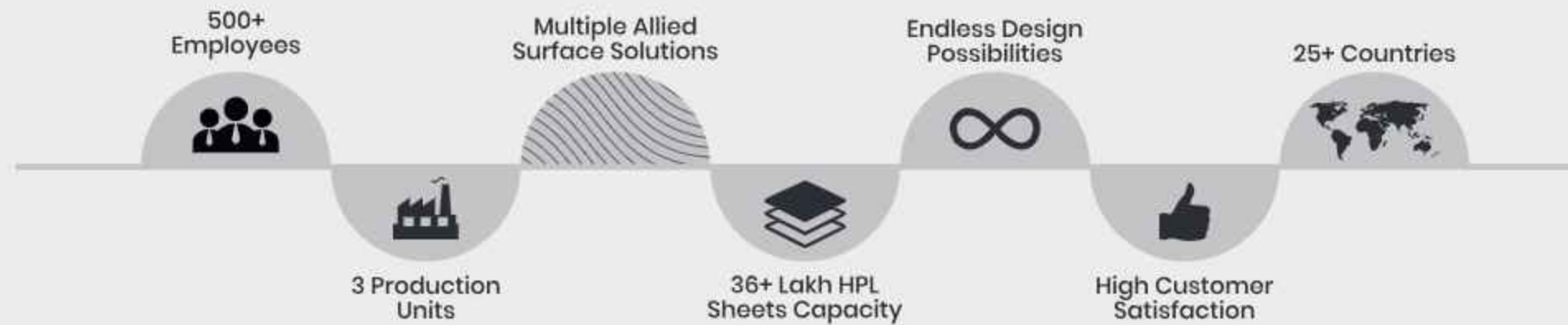
FIRE RETARDANT
EXTERIOR GRADE COMPACT LAMINATES





Amulya Mica Group

The Amulya Mica Group is one of the fastest-growing laminates brands in India. It holds a paramount position in the laminates and panel products industry. In the year 1998, they launched their first-ever product-plywood. After that, they expanded into high-pressure decorative laminates and then went ahead with launching WPC & PVC Boards in 2017. With over 500 employees, 3 production units and multiple allied surface solutions, today Amulya Mica is a government recognized Star Export House. With innovation and conviction, Amulya Mica ensures a consistent range of superior quality products and the Group's continuous growth in the challenging market scenario.



Vision

To create an extraordinary organization that manufactures world class products with unmatched quality, perfection and to establish Amulya Mica as an International Brand offering wide range of residential & commercial exteriors/interiors products. And to contribute it's share of efforts in Mr. Prime Minister's Make In India & Skilled India Mission.

Mission

To bring satisfaction to our customers and business associates by manufacturing world class products of outstanding quality by making use of latest technology, maintaining high business standard and nurturing a Zero Defect work culture enabling us to provide a huge range of finish, colours and design while using best of raw materials to achieve the same and to reach out to every town and city of India by 2025.

APPLICATIONS

- FACADE CLADDING
- BALCONY CLADDING
- SOFFITS
- CLADDING MEMBER FOR GATE & GARAGE
- DUCT COVERING
- SIGNAGES
- PEDESTRIAN SHELTERS
- PREFAB HUTS
- KIOSK
- PARTITIONS
- CANOPY
- FENCES, RAILS & SCREENS
- VENTILATED FACADES
- LOUVERS



LIMITED WARRANTY :

Cladmaestro's Warranty for 12 Years of Exterior Grade Laminate from the date of delivery of the product to the buyer within the frame work of the properties mentioned in Test Standard.

Warranty will be valid when installation will be done according to Amulya Installation Guideline Only. For proper Installation & Fabrication please refer to Amulya Guideline Book.

This will exclude if any damage been done by mishandling as a result of improper installation and maintenance of the product.



Standard Size : 2440 X 1220 MM

Standard Thickness : 6 MM



USED LAMINATE
EX3229-SF
TYROL PINE

REJOICE IN
SPLENDID DESIGNS



EX3151-SF

HASTINGS SANDAL

EX3161-SF

SAPELLI MAHOGANY



WOOD GRAIN



EX3229-SF

TYROL PINE



EXE130-SF

OAK TRUNK WOOD



EX3156-SF

CANYON MOUNTAIN WALNUT



WOOD GRAIN

Wooden finish to an interior gives a super class look under any circumstance.



EX3154-SF

CANYON MONUMENT-II



EX3150-SF

CANYON MONUMENT-I



EX3047-SF

ARGENTINE CAPISCO-III



EX3325-SF

JABLOKA



EXE139-SF

JACKPOT LIMBA DARK



EXE137-SF

VINTAGE OAK BROWN

THE RESPLENDENT FLAIR FASCINATES

USED LAMINATE
EX3380-SF
RISS EICHE



EXE142-SF

FORTRESS OAK-II



EX3380-SF

RISS EICHE



A surface texture that
has the look and feel of
exclusive wood.



EX3180-RE11

DYED ANEGRE LIGHT



EX3080-RE5

PINE WOOD SMOKED



EX3181-RE11

DYED ANEGRE DARK



EX3079-RE5

PINE WOOD FUMED



USED LAMINATE
EX3357-SF
GREY CASPIO-II

SPURGE IN
MODISIL DESIGNS



EX3155-SF

CYPRUS METAL



EX3366-SF

TRAVERTINE

MARBLE



EX3357-SF

GREY CASPIO-II



EX3356-SF

GREY CASPIO-I





EX3157-SF

VALONGO-I



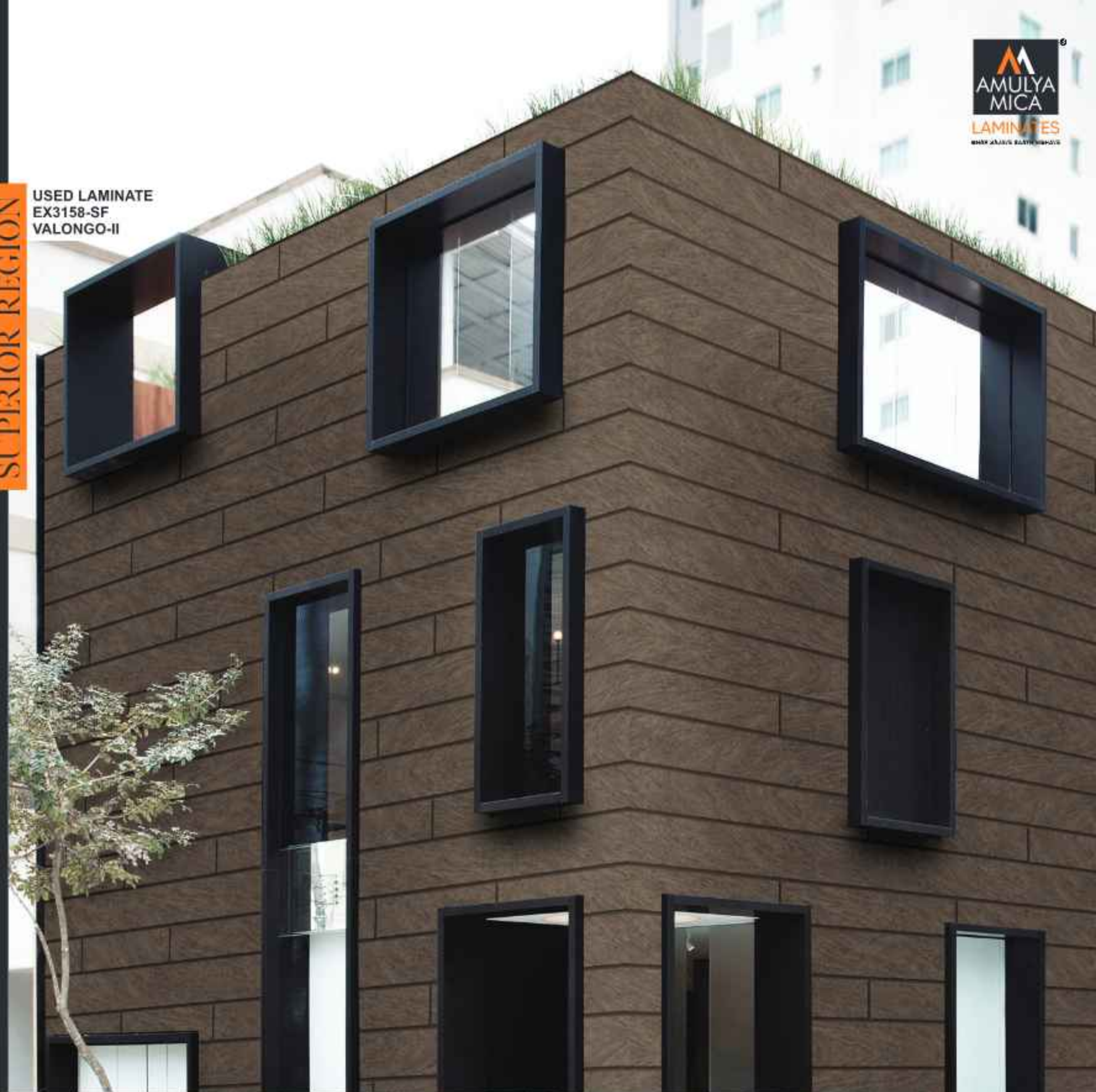
EX3158-SF

VALONGO-II



CHOOSE A SUPERIOR REGION

USED LAMINATE EX3158-SF VALONGO-II



EXE140-SF

LEISTONE





EXE127-SN

METRO GREY



EX3225-SN

ORIENTAL BLACK



EX3223-SN

METAL WORK



EXE132-SN

TOSCANA DARK



EX3263-SN

RUSTIC METAL WORK



EX3335-SN

KOMABA DARK

SOLID COLORS



EX1001-SF SNOW WHITE



EX1204-SF DOVE GREY



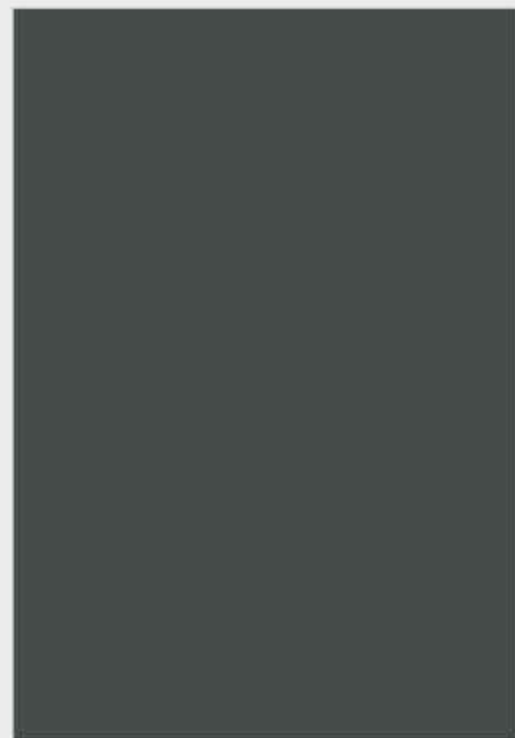
EX1414-SF NAVY BLUE



EX1425-SF EMERALD GREEN



EX1711-SF COFFEE



EX1813-SF DARK GREY

FABULOUS CRAFT
OF NATURE

FABULOUS CRAFT
OF NATURE



CUSTOMIZE YOUR EXTERIORS IN AN INNOVATIVE WAY

We give you the freedom to imagine, innovate and customize your exteriors with your creative instincts and give them a strikingly appealing look. With varying forms and outputs to customized shape, Cladmaestro's suits various design philosophies. Cladmaestro's External wall cladding panels can be made available in quad forms like tiles and planks but the possibilities to customize your exteriors using Cladmaestro's perforation technique are limitless.

Cladmaestro's perforation technique fulfills all your design needs and aspirations as it gives you the power to opt for any customized form. Choose any geometrical shape (involving straight cut) abstract patterns of preferable designs that inspires you to add revitalizing expression to the exterior.



THESE ARE THE EXCLUSIVE DESIGNS THAT WE ARE PROVIDING TO OUR EXCLUSIVE CUSTOMERS. THE MINIMUM ORDER QUANTITY IS 20 SHEETS AND THE ESTIMATED DELIVERY TIME IS 15 DAYS FROM THE DAY THE ORDER IS PLACED.



1102-SF MYSORE IVORY



1016-SF DOESKIN



1011-SF MUD ASH



1018-SF PEBBLE



1008-SF BERRY BUNCH



1999-SF MIDNIGHT BLACK



E129-SF OAK TRUNK WOOD NATURAL



3324-SF FAVO FLOOR



E131SF TOSCANO LIGHT



3354-SF TIMANFAYA BROWN



E128-SF METRO



3218-SF DYED ZEBRANO GOLD



E138-SF JACKPOT LIMBA LIGHT



E118-SF NAUVEOUS OAK LAVA



E117-SF SMOKED OAK QUARTER



3382-SF WHITBY ASIA DARK



6608-SF AMERICAN WALNUT







EX3180
Century Renata
Bangalore



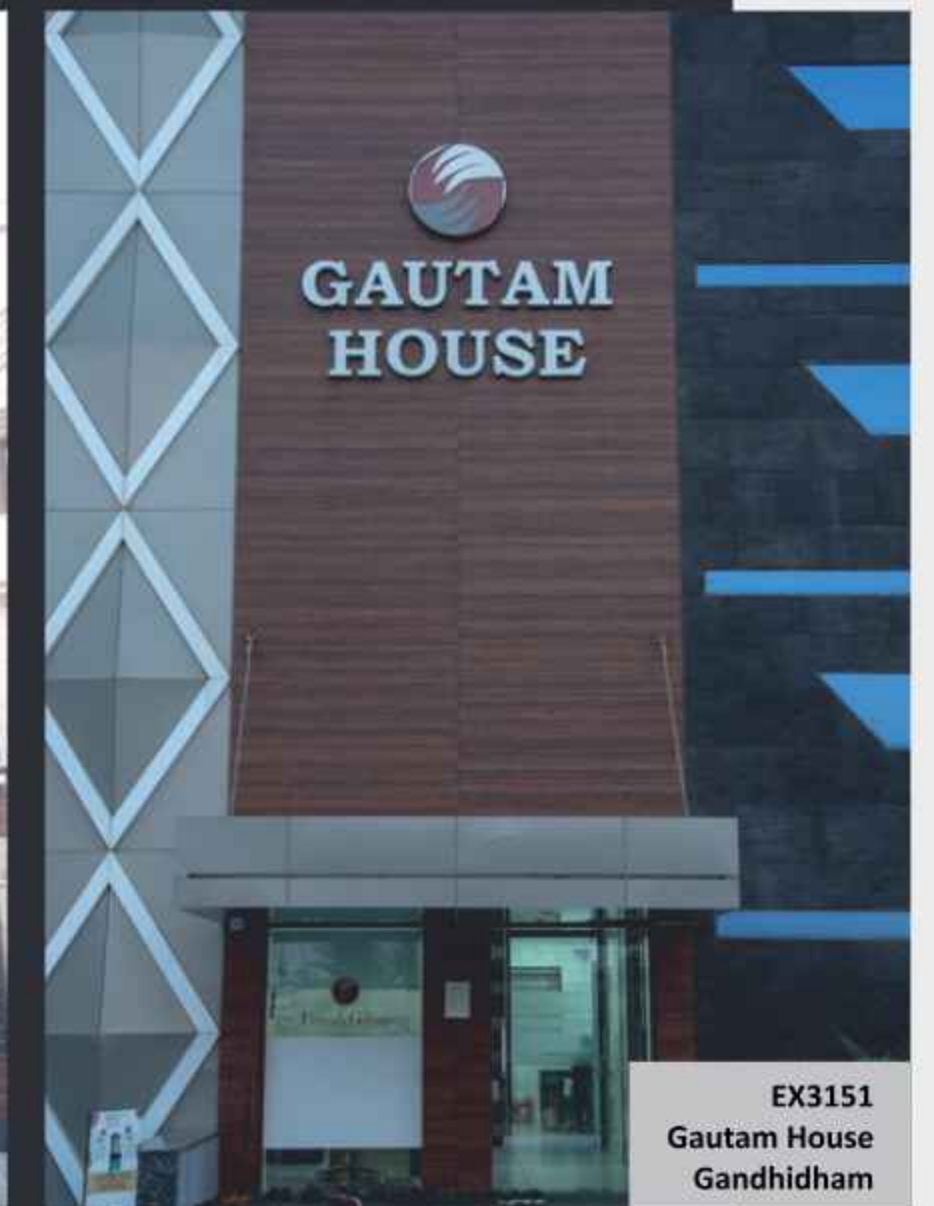
EX3229
Modet Town Rohtak
Haryana



EX3229
Rajasthan Hospital
Ahmedabad



EX3229
101, Priyadarshini Vihar
Delhi



EX3151
Gautam House
Gandhidham



EX3150
Shivam 4C
Delhi



EX3229
#46A Samundar Singh Rathore
Nosar-Rajasthan



EX3229
Saregama Export Guest House
Khurda



EX3047
Shree Maheshwari Seva Sadan
Surat



EX3229
Abhijot Green Satellite
Ahmedabad

 <p>RIVITED</p>	 <p>RIVITED FIXING</p>	 <p>FINISHED WALL</p>
 <p>ADHESIVE</p>	 <p>ADHESIVE FIXING</p>	 <p>FINISHED WALL</p>
 <p>Z-CLIP</p>	 <p>Z-CLIP FIXING</p>	 <p>FINISHED WALL</p>

PROPERTIES



AMULYA External Wall Cladding can be installed by using essential fasteners of non corrosive material like aluminium & stainless steel, head of the rivets are color with powder coated so as to compliment the Amulya External Wall Cladding range and are UV coated for better color fastening Properties.

Diameter of hole in Amulya External Wall Cladding panels:

- Sliding points: 8mm as required
- Fixed points: 5mm
- Diameter of hole in aluminium substructure: 5.1mm

Amulya External Wall Cladding Installation Methods: Riveting system

Amulya External Wall Cladding Panels of 6mm & 8mm are suitable for riveted system on an aluminium Substructure. This system is applied to high rise buildings or used as supporting gluing systems to provide extra solidity.

Aluminium Substructure:

The aluminium Substructure has to adhere to national standards and has to be installed in accordance with the manufacture Specification for the substructure. the aluminium substructure basically consists of vertical supports profiles which are mounted on the wall using brackets. Due to the material properties of Amulya External Wall Cladding panels, fixed points and sliding points need to be made in order to fix the panels.

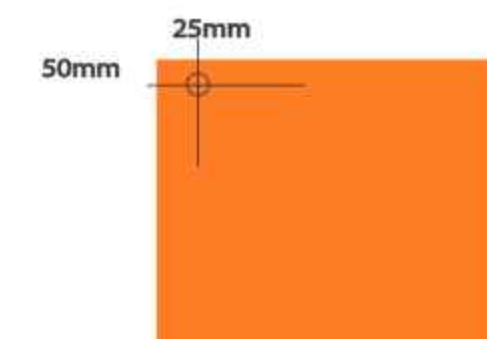
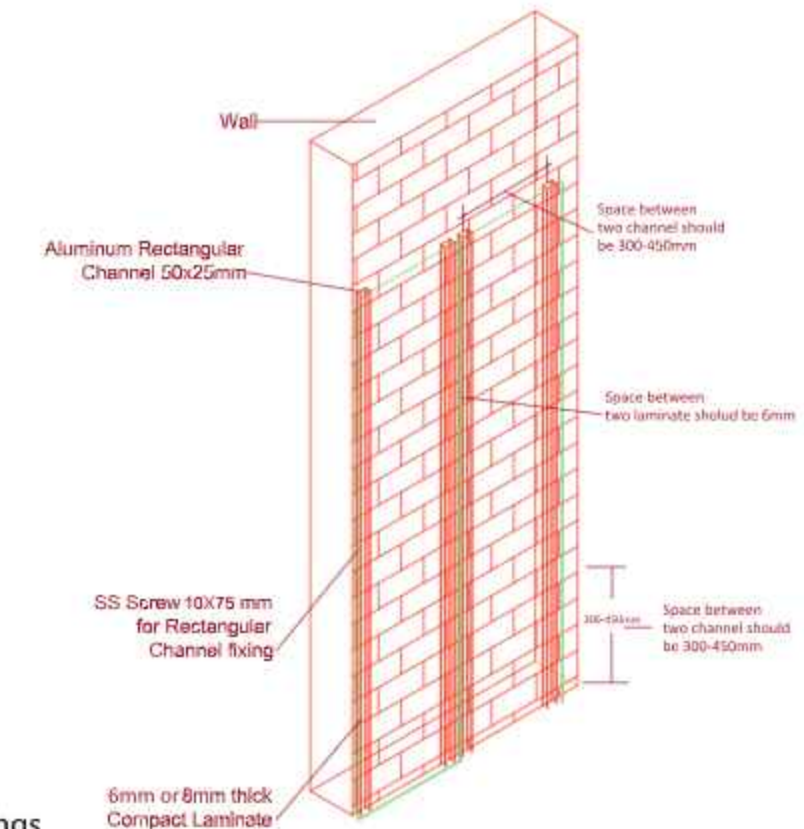
Edge Spacing:

The Edge spacing must be kept in consideration for the reasons of stability and flatness, without fail. At least 8 mm wide joints must be made so that changes in size can take place without any interruptions. With the change in temperature, the metal sub-constructions change their dimensions. However the dimensions of claddings alter by relative humidity fluctuations. These changes in the size of sub construction and cladding material can be opposite to each other. While installing keen attention must be paid to the expansion clearance. The thumb rule for calculating required expansion clearance is:

$X \text{ or } Y(\text{in mm})/500 = \text{Expansion Clearance.}$

Specifications

- Aluminium cube channel should be of 50*25*2mm thick or 40*40*2mm thick. Every junction of two panel's aluminium cube channel should be of 63*25*2mm thick or 75*40*2mm thick.(channel should be powder coated)
- Channel fixing will be fixed using 75mm*10mm screws on the wall in distance of 900mm c/c.
- Riveting hole on sheet should be 8mm.
- Riveting hole on channel should be 5mm.
- Riveting distance between each rivet in horizontal 450mm-600 mm c/c in elevation.
- Riveting distance between each rivet in vertical 300mm-450mm c/c in elevation.
- Riveting distance between each rivet in 300mm-450mm c/c in ceiling.
- For the edge plank. Or the start point from the edge of the wall, Riveting point marking will be 25mm in horizontal and 50 mm in vertical in order to match the centre of the aluminium section.
- Groove or Gap between each panel in horizontal & vertical should be 6mm-8mm.



Adhesive system

Aluminum Substructure: The Aluminum substructure has to adhere to National standards and must be installed according to the specifications of the manufacturer for the substructure. It basically consists of vertical support profiles which are mounted on the wall using angle brackets.

Edge Spacing:

The Edge spacing must be kept in consideration for the reasons of stability and flatness, without fail. At least 8 mm wide joints must be made so that changes in size can take place without any interruptions. With the change in temperature, the metal sub-constructions change their dimensions. However the dimensions of claddings alter by relative humidity fluctuations. These changes in the size of sub construction and cladding material can be opposite to each other. While installing keen attention must be paid to the expansion clearance. The thumb rule for calculating required expansion clearance is:

$$X \text{ or } Y(\text{In mm})/500 = \text{Expansion Clearance.}$$

Preparation of Surface & Priming:

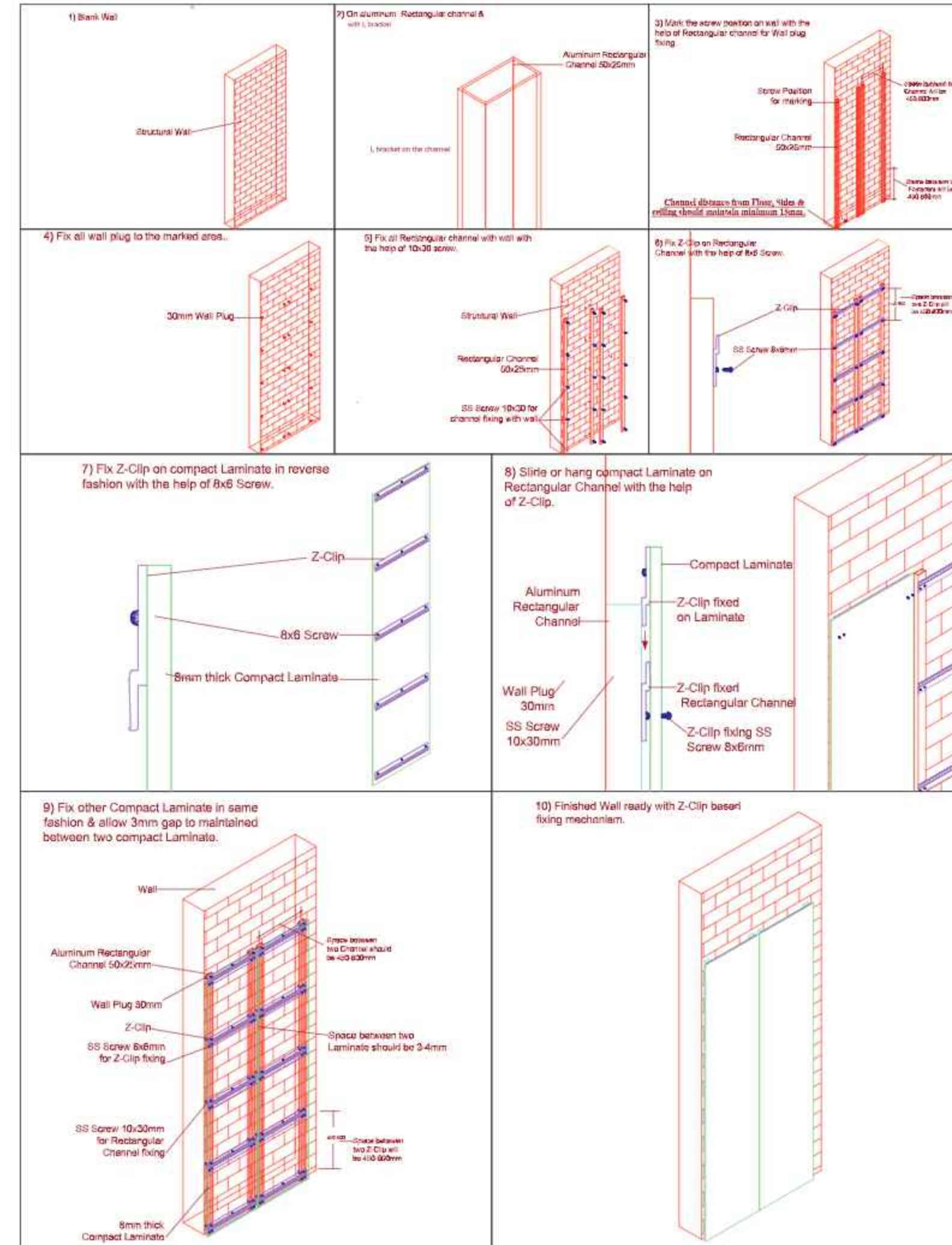
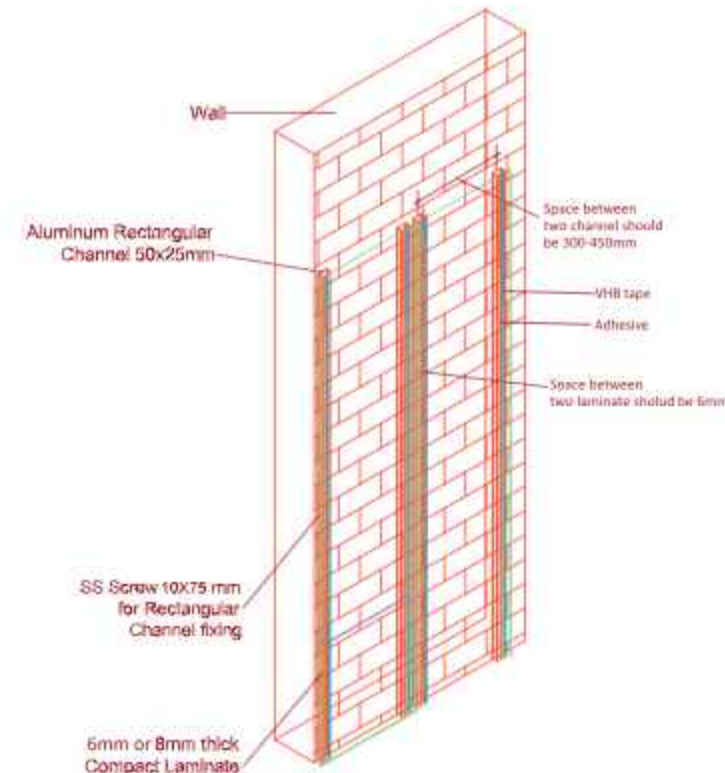
- **Abrasion:** Both the metal frame surface of the bonding area and the backside of HPL are abraded by using a cleaning pad / fine emery paper.
- **DO's:** Use Emery paper finer than 220 grit.
- **DON'TS:** Course abrasive product should not be used.
- **USES:** Abrasion improves adhesion by creating fine scratches and removes scales/other coatings.
- **Cleaning the Surface:** After the abrasion, surface is first cleaned with a dry cloth and then with 3M PU Cleaner. Wiping/cleaning has to be done in a single direction later allow the solvent to evaporate.
- **Priming:** Priming promotes adhesion. The surface of the bond need to be primed with 3M PU primer 595 black for durability.
- **Application:** For uniform coating on the surface primer can be applied either with brush or swab. The black film should be continuously wiped in a single direction. To achieve this in one stroke swab has to be soaked with enough primer. While applying the primer, reversing the direction of the swab/brush is not recommended. Application of the primer should be done only on the bonding areas and allowed to dry for leaving a tack free film. All these processes of surface cleaning has to be done just before the sealant application on the frame.
- To avoid dust accumulation on the surface, bonding should be completed at the earliest.

Very High Bond Tape and Sealant Application:

Application of Very High Bond Tape: As the extended exposure of Sealant bead will cause skin formation, VHB tape is advised to apply before opening the sealant pack. From the VHB Tape roll sufficient length has to be unwinded. Hold the edge of the tape, and the portion where it is touched by the fingers outside must left. Press the tape end to the frame, it should be aligned towards the outer edge of the frame. For bubble free application of the tape, 3M HTA is recommended. Wherever the tape needs to be joined an overlap should be given then cut the overlapping edges of the tape to get a cleat but-joint. With the help of squeegee or rubber roller, press the tape to ensure proper surface contact and to initiate the flow.

Application of Sealant: Application of sealant as triangular bead of 6-8 mm base with a gap of 10-12 mm from the tape is recommended. To get the triangular bead the nozzle of the sealant sausage / cartridge should be cut at a proper length with a 'V' notch. Apply sealant as a continuous bead with the uniform dimensions. The triangular shape of the bead helps to get maximum contact area in between the sealant and the panel, when squeezed, and a near rectangular bead. Cladding and the sealant application should be completed, within the skin formation time of the sealant.

Panel Cladding: After removing the liner from the tape, place the panel without pressing, to bond over the tape and sealant bead. To get a proper alignment the panel can be moved at this point, as it is not touched on the tape surface. There should not be much movement while aligning, to avoid any contamination of tape bonding surface with sealant. Once the alignment is done properly, push the panel to lock in that place and by using a rubber roller or by hand pressure press it down. Bond strength depends on the amount of adhesive to surface contact developed. Pressure should be applied in such a way so that both the surfaces contact the tape fully. As the adhesive flows onto the surface the bond will increase.



CLADMAESTRO Claddings are warranted for 12 years against any manufacturing defects like occurrence of bubbles on the surface, colour fading, delamination, impact of change in weather and etc. (as per EN 438-Part 6) from the date of purchase by the end consumer subject to following conditions.

1. This warranty will not be applicable in case of any accident, abuse or misuse.
2. It is recommended that the product must be inspected for any visual defect or any variation in Décor paper shade and colour before cutting, fabricating or installing.
3. Warranty shall be applicable only if proper fabrication and installation is done as per CLADMAESTRO's guidelines.
4. Warranty shall be applicable if the product is stored, handled and maintained with due diligence and under acceptable norms and practice.
5. Slight loss of brightness or homogeneous variation in colour may take place during the course of time of usage which is permitted as per EN 438-Part 6.
6. The company's liability shall be limited to replacement of sheet or refund of purchase value of the sheets only.
7. In case of any dispute arising out of this warranty, the jurisdiction of Court of Law shall be Gandhidham, Gujarat.
8. These terms of warranty shall be deemed to have been accepted by the end consumer upon purchase of the product.

CLADMAESTRO is meant to enhance beauty and durability of your wall cladding. These are made from superior quality of Décor papers having more than 6 value on Grey Scale and supported with UV Resistant film (both sides or one side, as per requirement of customer) which stands firmly against extreme weather conditions and resists colour fading. The layers of Kraft and décor paper are pressed under high temperature and pressure which makes it dense and tough enough to withstand any climatic impact.

TEST CERTIFICATE
ST-16-06-01-01

Product: Exterior-Grade Compact Laminates (Decorative High Stone)
Client: PURBANCHAL Laminates Pvt Ltd
Order: Testing of different properties according to EN 438-2 / Classification acc. to EN 438-4 (2005)
Test report: 215422_A1

Properties	Test results	Requirements according to EN 438-2:2005 for EN438-4
Thickness / Flatness	3.02 mm / 1.0 mm/m	Satisfied / Satisfied
Length / Width	3.0 mm / 3.0 mm	Satisfied / Satisfied
Irregularities of edges	0.05 mm/m	Satisfied
Flexural modulus / Flexural strength	12500 MPa / 132.5 MPa	Satisfied / Satisfied
Tensile strength (EN 1200)	180 MPa	Satisfied
Density (EN 1200)	1.45 g/cm ³	Satisfied
Resistance to impact by large diameter ball	1000 J/m ²	Satisfied
Resistance to self-cleaning	400000000	Satisfied
Dimensional stability at elevated temperature	0.05 mm/m	Satisfied / Satisfied
Resistance to climate (chick)	100000000	Satisfied
Resistance to UV-light	Colour strength index ΔE ₅₀₀ 0.025 Surface gloss index ΔG ₅₀₀ 0.05	Satisfied / Satisfied
Resistance to surface weathering	Surface gloss index ΔG ₅₀₀ 0.05 Surface colour rating 5	Satisfied

Deshkva, 3 June 2016

TEST REPORT
REACTION TO FIRE TEST

TEST SPONSOR:
Purbanchal Laminates Pvt. Ltd.
Goyal Avenue, Room No. 101-102,
Plot No. 318, Ward 12/6, Gandhidham - 370031
Ranch, Gujarat, India
T: +91 2886 231 466, F: +91 2836 231 466
Email: amulyamica@rediffmail.com / amulya2004@yahoo.co.in
Website: www.amulyamica.com

TESTED MATERIAL/ASSEMBLY:
6.5mm Thick Fire Retardant Exterior Grade High Pressure Compact Laminates

TEST STANDARD:
ASTM E84-08: Standard Test Method for Surface Burning Characteristics of Building Materials

TEST	STANDARD VALUE	AMULYA VALUE
FLAME SPREAD RATIO (FSR)	0-75	4
SMOKE DEVELOPED INDEX (SDI)	1-80	18

Test Date: 21-Dec-16
Issue Date: 13-Jan-17
Test Reference No.: Q0020 (Rev. 01)

राष्ट्रीय परीक्षण शाला (पूर्वी क्षेत्र)
National Test House (Eastern Region)
117 जजमेर कोर्ट रोड, जलेश्वर, कोलकाता - 700 027
117, Judges' Court Road, Jalpaiguri, Kolkata - 700 027

परीक्षण प्रमाण पत्र
TEST CERTIFICATE INTERIM/FINAL REPORT

परीक्षण प्रमाण पत्र नं. / Test Certificate No.: 146456790022
दिनांक / Date of Issue: 08/06/2016
पृष्ठ संख्या / Page No.: 2

परीक्षण प्रमाण पत्र जारी करने वाले / Issued To: PURBANCHAL LAMINATES PVT. LTD.
पता / Address: 101-102, 1st Floor, Goyal Avenue, Plot No. 318, Ward 12/6, Op. L.C. Block, Gandhidham, Ranch, Gujarat 370031

परीक्षण प्रमाण पत्र नं. / Customer Ref. No.: NIL
दिनांक / Date: 30/06/2016

परीक्षण प्रमाण पत्र नं. / Register No. & Date: 0016NTHDR/CH/HS/06/002016

परीक्षण प्रमाण पत्र का विवरण / Description of Test Item: Synthetic Resin Bonded High Pressure Decorative Laminates - 2 pcs

परीक्षण प्रमाण पत्र नं. / Design No. & Title: Design No. E-111, Finish-SF Colour-Brown

परीक्षण प्रमाण पत्र नं. / Product Specification (if any): BS-478 Part-7:1971

परीक्षण प्रमाण पत्र नं. / Date of Receipt of the Test Item: 03/06/2016

परीक्षण प्रमाण पत्र नं. / Delay of Performance of Tests: From: 06/06/2016 To: 07/06/2016
On the lines of BS-478 Part-7:1971

परीक्षण प्रमाण पत्र नं. / Remarks/Justification for Test: Not applicable

परीक्षण प्रमाण पत्र नं. / Sampling Procedure where relevant: Not applicable

परीक्षण प्रमाण पत्र जारी करने वाले / Tested By: Vinod Kumar A. Ram, SO Chemical
परीक्षण प्रमाण पत्र जांचने वाले / Checked By: Ramesh Kumar De, Scientist-SO (Chemical)
परीक्षण प्रमाण पत्र मंजूर करने वाले / Approved By: Ramesh Kumar De, Scientist-SO (Chemical)

SCAN THE QR CODE TO DOWNLOAD CERTIFICATE

EPH SUCCESS BY QUALITY

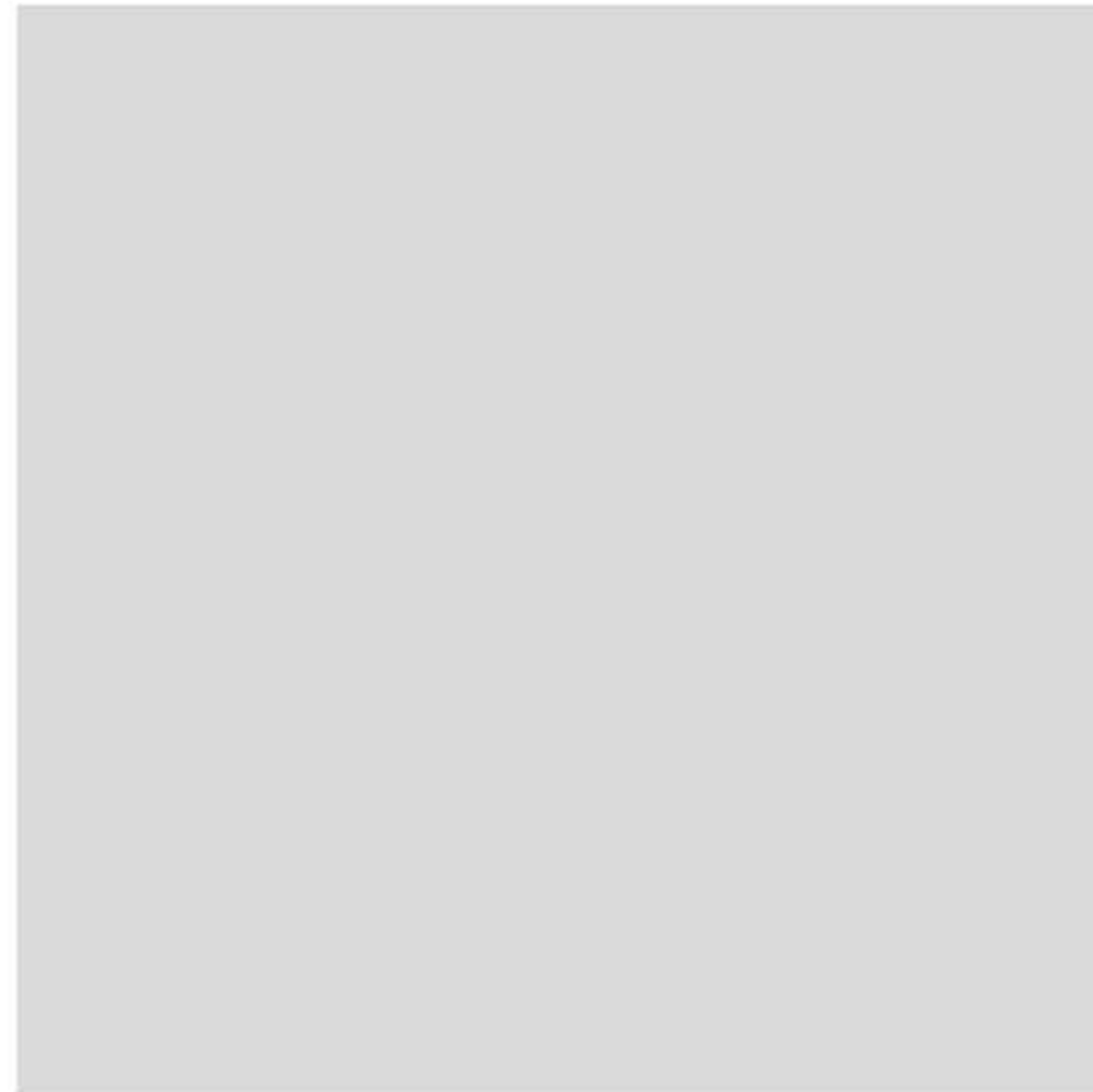
THOMAS BELL WRIGHT INTERNATIONAL CONSULTANTS

DUBAI ABU DHABI DOHA

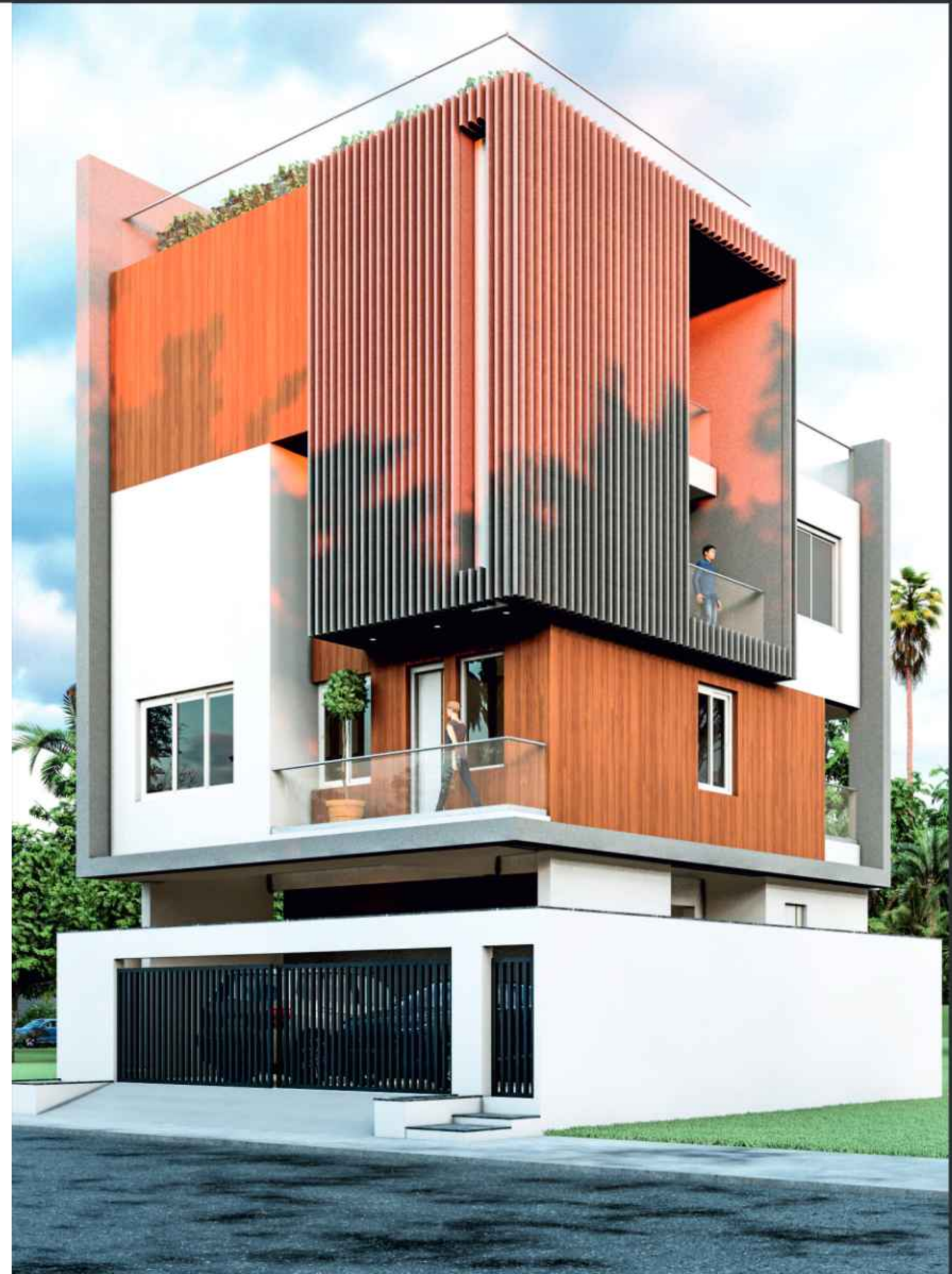
Size: 2440mm x 1220mm

Sr No.	Properties	Specification As per EN 438 - Part 6	Amulya Values
1	Thickness (mm.) (max.) 5.00 ≤ t < 8.00 (mm.)	6.00 ± 0.40 mm.	6.10 mm.
2	Length (mm.)	2440.00 + 10.00 / -0.00 mm.	2441.00 mm.
3	Width (mm.)	1220.00 + 10.00 / -0.00 mm.	1221.00 mm.
4	Edge straightness mm. (max.)	1.50 mm. / m	0.88 mm. / m
5	Edge squareness mm. (max.)	1.50 mm. / m.	0.80 mm. / m
6	Flatness (mm.) (max.) 2.00 ≤ t < 6.00 (mm.) 6.00 ≤ t < 10.00 (mm.) t ≥ 10.00 (mm.)	8.00 mm. / m 5.00 mm. / m 3.00 mm. / m	3.60 mm. / m 2.40 mm. / m 1.50 mm. / m
7	Tensile Strength (min.)	60 Mpa.	68 Mpa.
8	Density, gm. / cm ³ (min.)	1.35 gm. / cm ³	1.48 gm. / cm ³
9	Resistance to wet conditions a) Mass increase (%) max. 2.00 ≤ t < 5.00 (mm.) (t = normal thickness) t ≥ 5.00 mm.	10% 8%	3.20% 2.50%
	b) Appearance not worse than	Rating 4	Rating 5
10	Dimensional Stability at elevated temperature. 2.00 ≤ t < 5.00 (mm.) (t = normal thickness) a) Longitudinal, % max. b) Transverse, % max. t ≥ 5.00 mm. a) Longitudinal, % max. b) Transverse, % max.	0.40% 0.80% 0.30% 0.60%	0.20% 0.40% 0.20% 0.35%
11	Surface Burning Test. As Per ASTM E84-16, CLASS-A a) Flame Spread Index (FSI) b) Smoke Developed Index (SDI)	0 - 25 0 - 450	5 30

Note: Sample shown in this catalogue is just for color & pattern reference only, actual sheet sample pasted below.



Product Sample





PURBANCHAL LAMINATES PVT. LTD.

CORPORATE OFFICE :

Goyal Avenue, Office No. 101 & 102, 1st Floor,
Plot No. 318, Ward 12-B, Opp. Old LIC Block,
Gandhidham - Kutch, Gujarat - 370201

CRM No.: +91 2836 231468

Email: crm@amulyamica.com **Toll-free Number:** 1800-233-1468



FOR MORE DETAILS, VISIT :
www.amulyamica.com

12 YEARS WARRANTY