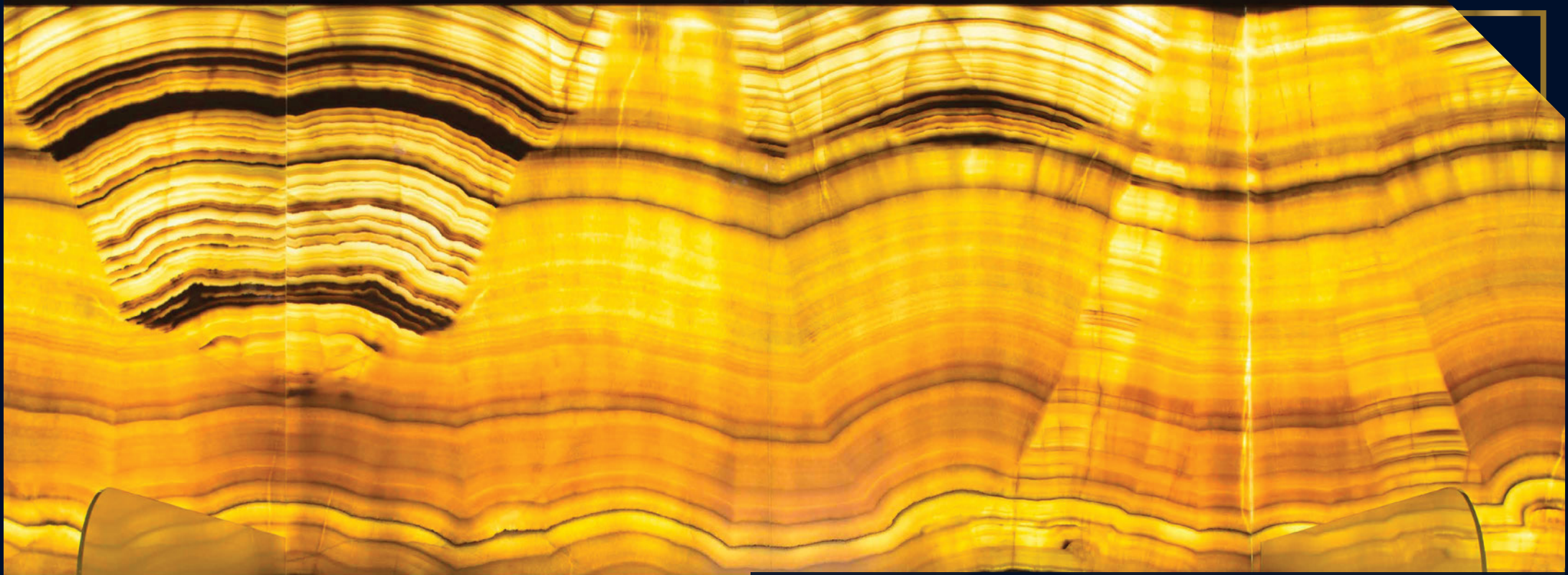




TRANSONYX

NOWHERE LIKE HORME



TRANSFORMING INTERIOR DESIGN

TransOnyx is engineered to bring the modern design to the next level of luxury. Made from special resins and finely-ground natural minerals, TransOnyx represents a great low cost alternative to real stone in color and texture. TransOnyx adds the magic of light to every application, ensuring an astonishing effect and a game changing in the interior design.





UNIQUE FEATURES

- Translucent
- 1/10 the price of real Onyx for similar beauty and class.
- Lighter than stone
- Water resistance
- Greater design flexibility
- Outstanding durability

A photograph of a modern bar interior. The bar counter is long and illuminated from below, creating a warm yellow glow. Behind the counter, there are various bottles and glasses. The wall behind the bar is decorated with a grid of glowing rectangular frames. The ceiling has recessed lights. In the foreground, there are patterned bar stools.

INDUSTRIES SERVED

- CORPORATE
- EDUCATION
- BAR/RESTAURANT
- GOVERNMENT

- HOSPITALITY
- RETAIL

ILLUMINATING IDEAS

- ARTWORK
- PARTITIONS/ PRIVACY PANELS

- BACK-LIT BAR TOPS
- WALL CLADDING



ILLUMINATING IDEAS

- FURNITURE
- RECEPTION DESKS

- LIGHTING FIXTURES
- SIGNAGE



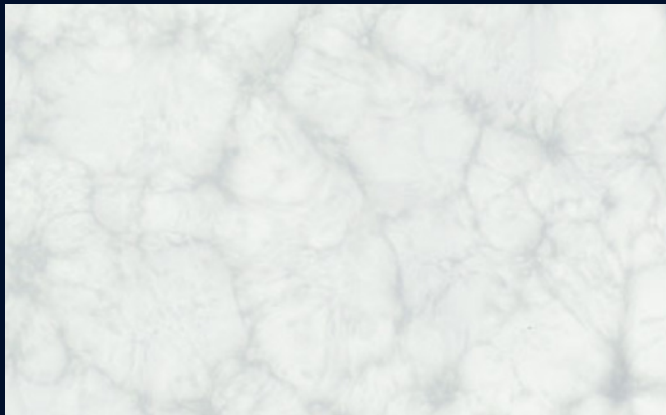
TRANSONYX SPECIFICATIONS

| | |
|----------------------------|---|
| STANDARD SIZES | 48" x 96" |
| THICKNESSES | 15/64" (6mm) ; 5/16" (8mm) ; 15/32" (12mm) |
| SURFACE FINISH | Matt or Gloss |
| FABRICATION | Standard wood-working tools |
| INSTALLATION | An expansion gap of 1/16" per 36 inches of product should be allowed for when setting out your sheets. Most glass fittings can be used. |
| INDOOR/OUTDOOR | Indoor use only |
| CARE INSTRUCTION | Easy maintenance. Using warm water, mild detergent, and a soft sponge, cloth or chamois will be enough to clean TransOnyx |
| ADDITIONAL COMMENTS | Being handmade, slight imperfections in TransOnyx are deemed acceptable. These slight imperfections may include small bubbles in the interlayer or slight surface texture imperfections. Any imperfection that is not visible 36 inches away from the panel is deemed within commercial tolerance TransOnyx can be used as a backflash but NOT behind a stove or cooktop. |



TRANSONYX COLLECTION

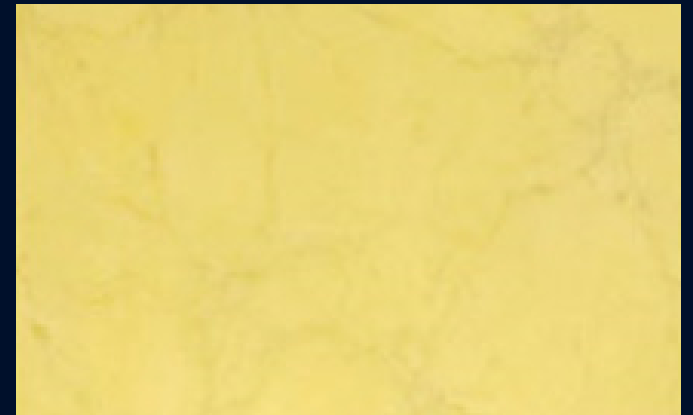
ALABASTER SERIES



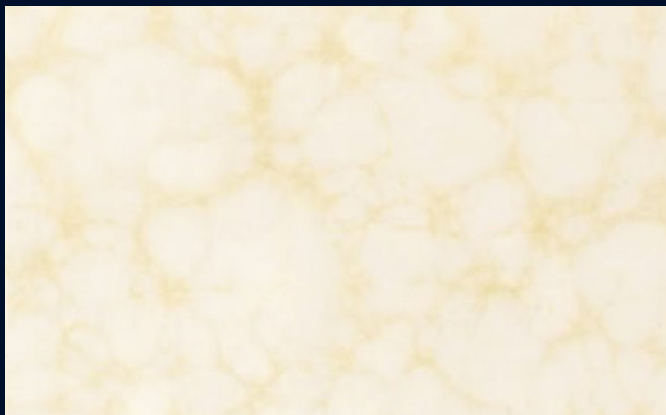
HO-6800 | BACH LUCE



HO-6801 | GOLDEN CARRARA



HO-6803 | CREMA CARRARA



HO-6806 | VERDE CARRARA



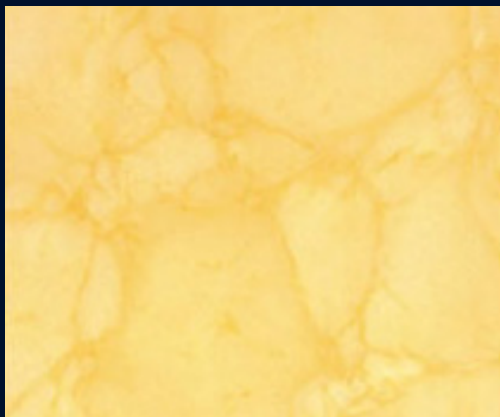
HO-6809 | BROWN CARRARA



HO-6810 | PHOENIX

TRANSONYX COLLECTION

ALABASTER SERIES



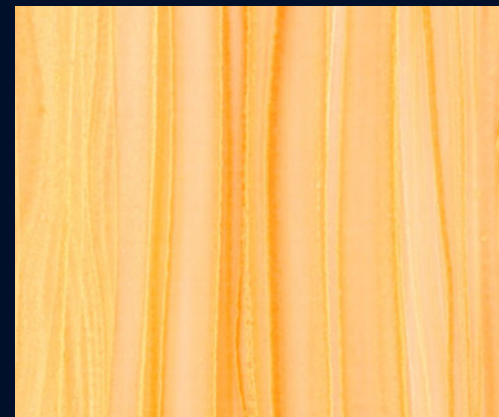
HO-6811 | ARANCIA



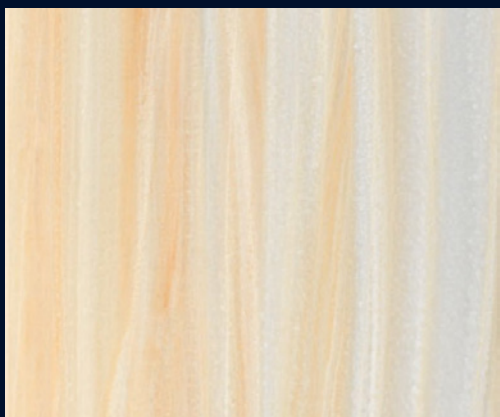
HO-6816 | BLACK CARRARA



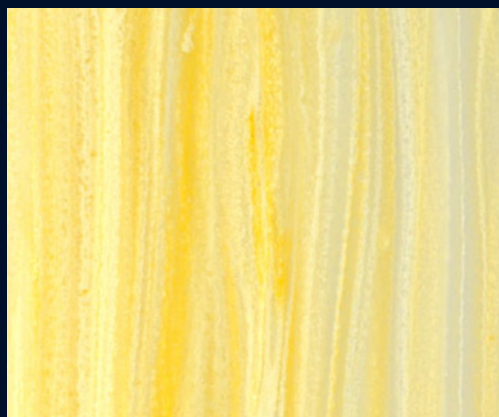
HO-6831 | CAPPUCCINO



HO-7602 | MUINE DUNE



HO-7608 | VEINCUT



HO-7614 | LIMONATA



HO-7616 | TUSCANY



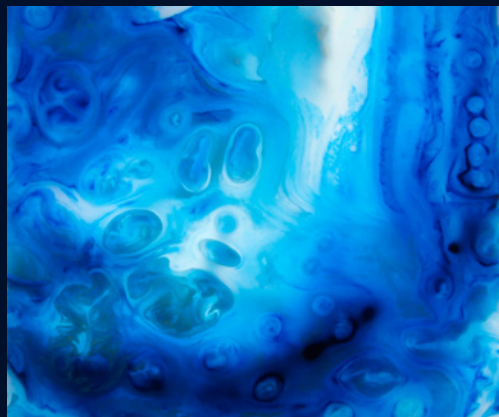
HO-7533 | GANDEN

TRANSONYX COLLECTION

BELLISSI SERIES



HO-O181203 | BAHAMAS



HO-O181204 | CARIBBEAN



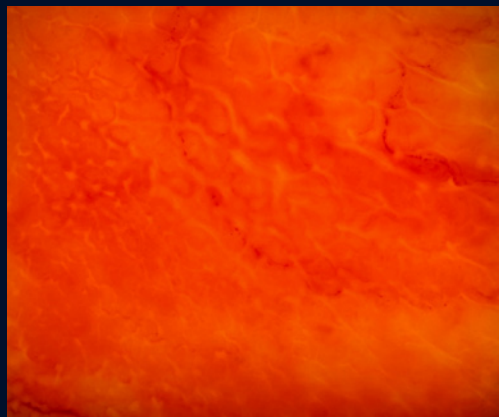
HO-W702 | GRIGIO RIVER



HO-W704 | MARRONE



HO-W705 | LAMDONG



HO-W706 | FERRARI



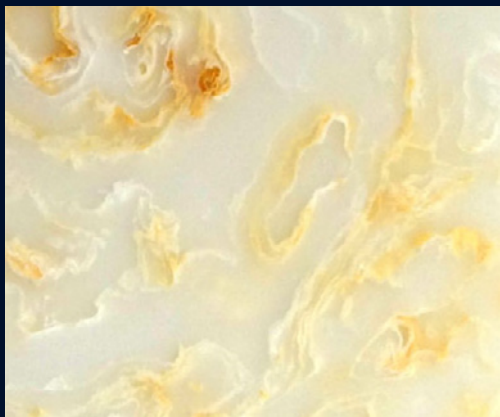
HO-Z072 | YANGOON



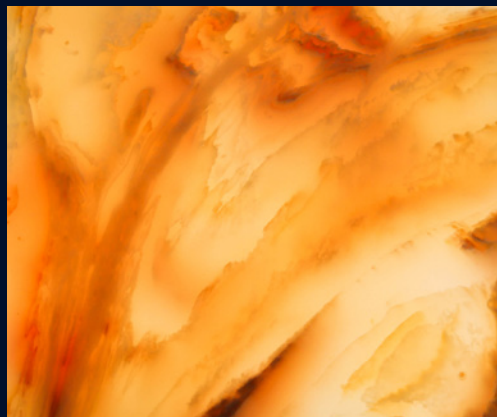
HO-Z050 | BIANCO ONYX

TRANSONYX COLLECTION

BELLISSI SERIES



HO-Z052 | GOLDEN GALAXY



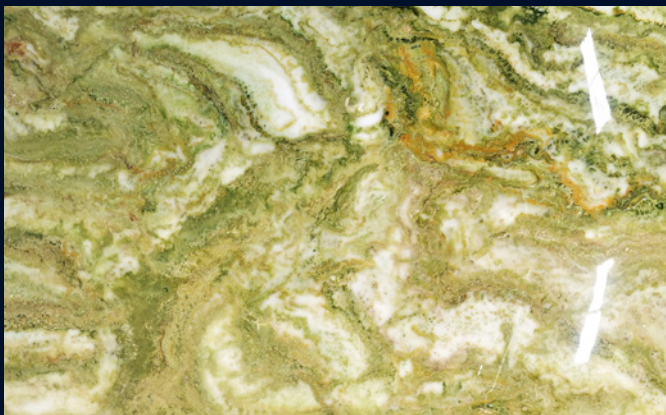
HO-Z057 | SAHARA SUNSET



HO-Z074 | GREEN JASPER



HO-Z051 | TEAK WOOD



HO-Z081 | PERIDOT



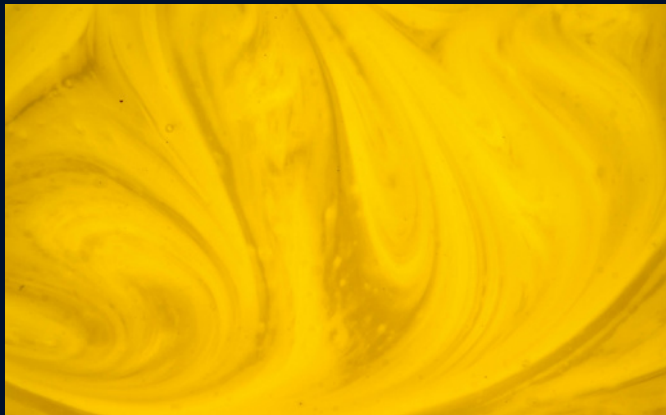
HO-Z0818 | CHALCANTHITE



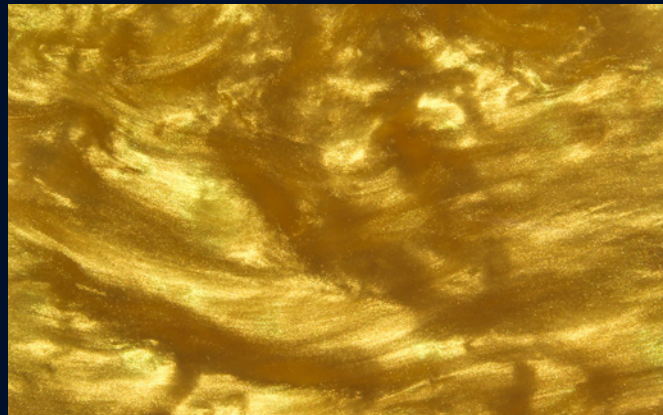
HO-Z0819 | IDOCRASE

TRANSONYX COLLECTION

PERLA SERIES



HO-P2006 | DUBAI



HO-P5002 | CLEOPATRA



HO-P5012 | NEFERTARI



HO-P5013 | PERLA ROSSA



HO-R04 | VIOLA



HO-TS42 | WHITE SHELL

PROJECT - VENUS NAIL SPA



PROJECT - VENUS NAIL SPA





9245 LAGUNA SPRINGS DR, STE 200
ELK GROVE. CA 95758

T. (916) 806-0215
E. INFO@HORMETRADING.COM

WWW.HORMETRADING.COM