

N2LOK

Hardware Trading Pty Ltd

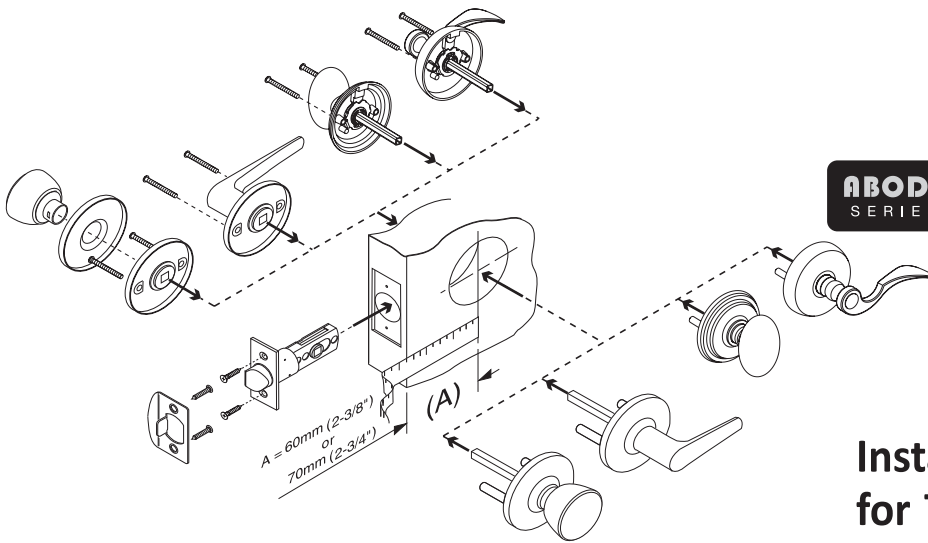
ABODE
SERIES

DOMAINE
SERIES

Maison
SERIES

LIMITED WARRANTY
7 YEAR
MECHANICAL

LIMITED WARRANTY
5 YEAR
FINISH



Installation Instructions for Tubular Locksets

1. Mark Door

1-1 Measure your door for a backset (A) of 60mm(2-3/8") or 70mm(2-3/4").

If backset (A) of door measured 70mm(2-3/4"), adjust latch as shown.

1-2 Place fold of template on door edge with centerline 965mm(38") above the floor.

1-3 Mark center of door face hole using desired backset location.

Mark for 51mm(2") or 54mm(2-1/8") hole on door face

1-4 Mark appropriate center of door edge.

Mark for 25mm(1") hole on door edge

2. Drill Hole

2-1 Drill a 51mm(2") or 54mm(2-1/8") diameter hole about halfway through door, then finish drilling from the other side to prevent splintering.

51mm(2") or 54mm(2-1/8") hole

2-2 Drill a 25mm(1") diameter hole in center of the door edge.

Check template for correct size for the latch application.

25mm(1") hole

3. Install Latch

3-1 Insert latch in the hole on the door edge, keeping it parallel to the face of door edge. Trace outline of plate.

3-2 Chisel 3mm(1/8") deep or until latch face is flush to the door edge.

3-3 Insert latch with the slant of bolt facing in the direction that the door closes. Secure with screws.

Note: If for Drive-in latch, Press the latch into the 25mm(1") hole until it is flush with the door edge.

4. Install Exterior Assembly

Insert stemmed assembly with spindle into the latch, making certain that stems are positioned correctly through the latch holes. Press flush against the door.

With door open, test function of the lock.

5. Install Interior Assembly

Install interior assembly by placing it onto the spindle, and aligning screw holes with stems, push the interior assembly flush against the door, then secure with screws.

Note: See below steps for concealing screw mechanism.

1. Remove knob or lever by pressing down the knob catch with the installation key.
2. Pry up and remove the rose cover from the liner.
3. Install the interior assembly (without knob/lever or the rose cover), secure with screw.
4. Snap on the Rose Cover onto the liner, then insert the knob/lever back on the stem.

6. Install Strike

6-1 To mark strike plate hole location, close door and press a 51mm(2") common nail from inside the 54mm(2-1/8") hole, through pilot hole until nail makes indentation in door jamb

Door Jamb

6-2 Drill 25mm(1") hole 13mm(1/2") deep in the door jamb on center line of screw.

6-3 Trace strike on door jamb and chisel out area 1.6mm(1/16") deep. Drill 2mm(3/32") diameter pilot holes same length of screws.

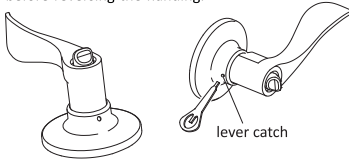
6-4 Install strike plate and secure with screws.

Note: A keyed lock will not lock properly if the smaller bolt of latch enters the strike hole. Reposition strike plate if required.

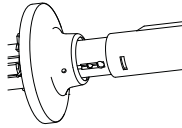
Smaller bolt

7. Domaine Series Reversible Lever

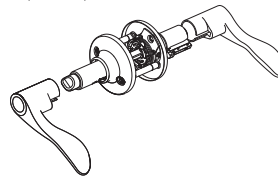
7-1 Make sure the levers are in unlocked position before reversing the handing.



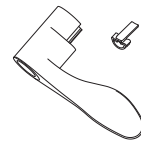
7-2 Remove the lever by pressing down the lever catch by the installation key.



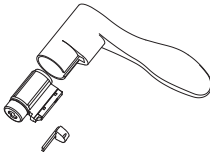
7-3 Repeat Step 7-2 on the other lever



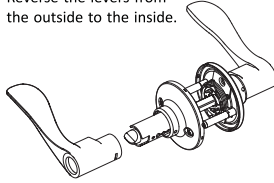
7-4 Remove the white plastic cylinder cap from each lever, set aside for later reinstallation.



7-5 Remove the Cylinder Assembly from the Exterior Lever.

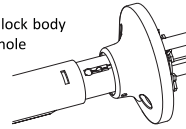


7-6 Reverse the levers from the outside to the inside.



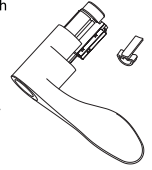
7-7 Push the lever onto the lock body until the lever catch clicks into place. Repeat the step for both Exterior & Interior Levers.

Note: The hole on the lock body must line up with the hole on the lever.



7-8 Insert the cylinder assembly into the Exterior lever, with the cylinder being pushed all the way through.

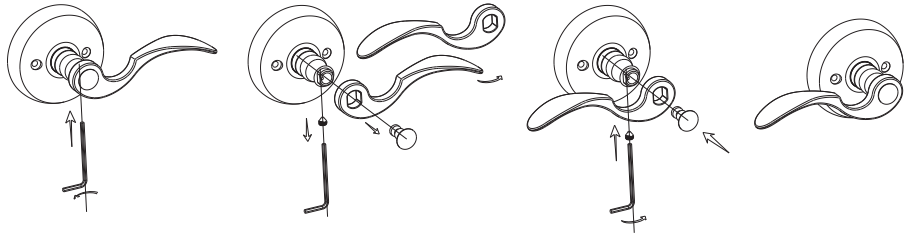
Re-install the white plastic cylinder cap on both lever.



8. Maison Series Reversible Privacy & Passage Lever

To re-hand the Lever (Privacy & Passage function only)

Use the Allen/Hex Key tool provided to release the Allen/Hex screw from underneath of the lever neck, remove cover pin and the lever, then reverse the Lever, put the lever and the cover pin back in place then retighten the Allen/Hex screw.



1 FOLD HERE ON DOOR EDGE

2 MARK FOR 45mm (1 7/8") DOOR MARK FOR 35mm (1 3/8") DOOR

3 THEN DRILL 25mm (1") HOLE IN CENTER DOOR OF EDGE

TEMPLATE

FOR INSTALLING ENTRY LOCK AND DEADBOLTS

60mm (2 3/8") BACKSET

70mm (2 3/4") BACKSET

IMPORTANT! PLACE TEMPLATE ON HIGH EDGE OF DOOR BEVEL

4 MARK CENTER OF HOLE ON DOOR FACE

5 DRILL 54mm (2-1/8") HOLE



This product is warranted to be free from mechanical & workmanship defects for 7 years and free from finish & surface defects for 5 years from the original date of purchase. Should a mechanical or finish defect occur within this warranty period just return the product along with proof of purchase to point of purchase for replacement. Premature finish deterioration due to the use of solvents, acid cleaners, paints, climatic conditions i.e. salt air or surface abrasion by keys or jewellery is not considered a defect & thus not covered by this warranty. The same applies for mechanical failure due to the incorrect installation, misuse or abuse will not be covered by this warranty. The removal & refitting of the product & any associated handling & transportation costs is not covered by this warranty. N2LOK reserves the right to modify product styles & finishes without notification. If the same product model is no longer available a similar product model will be supplied. Any accessories, spare parts & trim purchased separately to complete & compliment the lockset or hardware are not covered by this warranty.

