

# N2LOK

Hardware Trading Pty Ltd

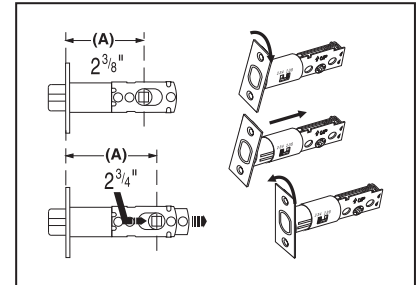
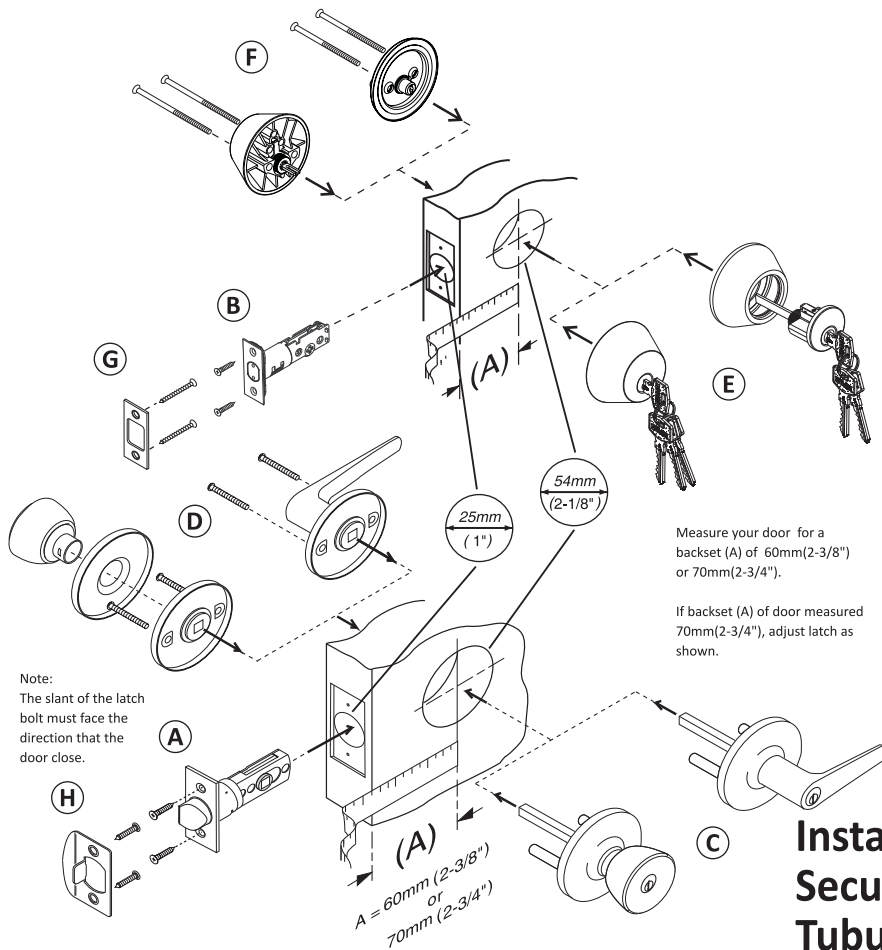
ABODE  
SERIES

DOMAINE  
SERIES

4  
KEYS

LIMITED WARRANTY  
7  
YEAR  
MECHANICAL

LIMITED WARRANTY  
5  
YEAR  
FINISH



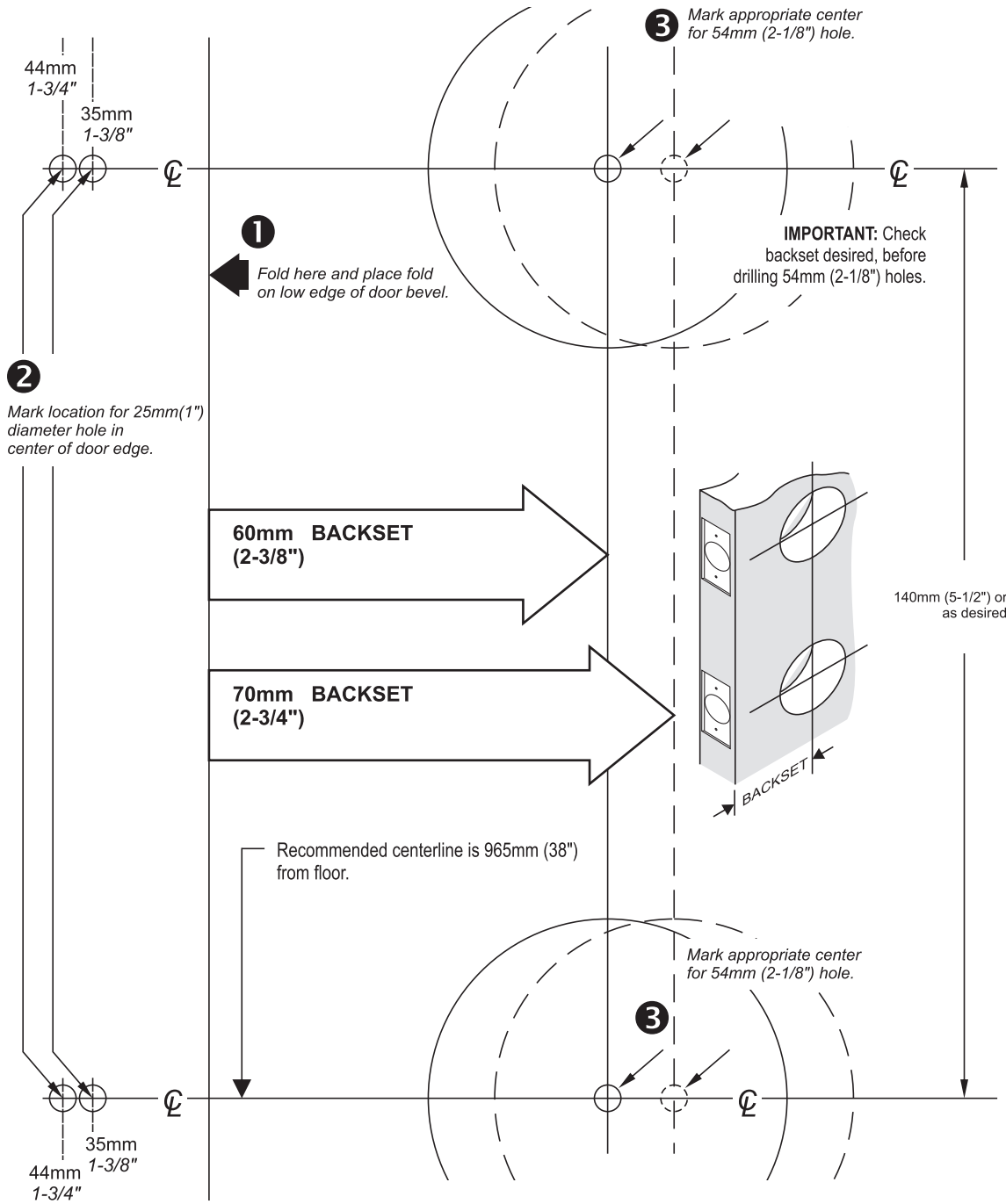
## Installation Instructions for Security Combo Suite with Tubular Locks and Deadbolts

### Door Preparation

<p>A. Follow steps 1 through 3 of template</p>	<p>B. Drill 3mm(1/8") diameter pilot holes where marked.</p> <p>Through hole</p> <p>C. Drill the 54mm(2-1/8") hole about halfway through door, then finish drilling from the other side to prevent Splintering.</p> <p>51mm(2") Deep</p>	<p>D. Mark location for strike plate hole in door jamb, by closing door and pressing a 51mm(2") common nail from inside the 54mm(2-1/8") hole through pilot hole until nail makes indentation in door jamb.</p> <p>Door Jamb</p>	<p>E. Drill 25mm(1") diameter holes in door edge and jamb. Drill the top hole in jamb a minimum of 25mm(1") deep and the bottom hole 16mm(5/8") deep.</p> <p>Door edge</p> <p>Door Jamb</p>
<p>F. Trace face of latches in door edge and chisel out area 5/32"(4mm) deep.</p> <p>Note: No chiseling is required for latch if you are using a drive in latch. (Latch without face plate)</p>	<p>G. Center appropriate strike over holes in door jamb and trace outlines. Chisel out area 1.6mm(1/16") deep for bottom strike and 2mm(5/64") deep for top strike. Place strikes on jamb and mark screw hole centers. For top strike, drill 3mm(1/8") diameter pilot screw holes a minimum of 38mm(1-1/2") deep. For bottom strike, drill 2mm(5/64") diameter pilot screw hole a minimum of 13mm(1/2") deep.</p> <p>Top Strike</p> <p>Bottom Strike</p>		

### Installation Instruction

<p>H. Install Latches Insert deadbolt latch in up position into hole as shown. With the "UP" at the top. Secure with screws.</p> <p>Insert latch with the slant of bolt facing in the direction that the door closes. Secure with screws.</p>	<p>I. Install Exterior Assembly</p> <p><b>Deadbolt</b> Retract the Deadbolt to the unlocked position by turning the Latch Bolt Crank with a screw driver. Install the external Cylinder &amp; Rose assembly with the Torque Blade vertically insert into the Latch Bolt Crank.</p> <p>The Key Way should be at the 6:00 o'clock position.</p> <p><b>Tubular Lockset</b> Insert stemmed assembly with spindle into the latch, making certain that stems are positioned correctly through the latch holes. Press flush against the door.</p> <p>Spindle</p> <p>Latch hole</p> <p>Stems</p>	<p>J. Install Interior Assembly</p> <p><b>Deadbolt (Single Cylinder Model)</b> Place turnpiece assembly on door. Rotate turnpiece to vertical position, insert screws, engaging exterior cylinder and tighten.</p> <p><b>Deadbolt (Double Cylinder Model)</b> Install the internal Cylinder &amp; Rose assembly with the Torque Blade horizontally insert into the Latch Bolt Crank. The Key Way should be at the 6:00 o'clock position.</p> <p>Insert the fixing screws, engaging the External Cylinder then tighten. Test the key to see if it binds or works in reverse by throwing the Deadbolt to the locked mode, each time the key is removed from the Cylinder. Then undo the fixing screws, remove the internal assembly &amp; twist the Torque Blade 180 degrees in the opposite direction, then reinstall the internal assembly &amp; tighten with fixing screws.</p> <p><b>Tubular Lockset</b> Install interior assembly by placing it onto the spindle, and aligning screw holes with stems, push the interior assembly flush against the door, then secure with screws.</p> <p>STEMS</p> <p>SCREW HOLES</p> <p>SPINDLE</p>
<p>K. Install strike plate and secure with screws.</p> <p>Note: The Tubular Entry lock will not lock properly if the smaller bolt of latch enters the strike hole. Reposition strike plate if required.</p> <p>Smaller bolt</p>	<p>For concealing screw mechanism</p> <ol style="list-style-type: none"> <li>1. Remove knob or lever by pressing down the catch.</li> <li>2. Prize up and remove the rose cover from the liner.</li> <li>3. Install the interior assembly, secure with screw.</li> <li>4. Cap on the rose cover onto the liner, then insert the knob/lever back on the stem.</li> </ol>	



This product is warranted to be free from mechanical & workmanship defects for 7 years and free from finish & surface defects for 5 years from the original date of purchase. Should a mechanical or finish defect occur within this warranty period just return the product along with proof of purchase to point of purchase for replacement. Premature finish deterioration due to the use of solvents, acid cleaners, paints, climatic conditions i.e. salt air or surface abrasion by keys or jewellery is not considered a defect & thus not covered by this warranty. The same applies for mechanical failure due to the incorrect installation, misuse or abuse will not be covered by this warranty. The removal & refitting of the product & any associated handling & transportation costs is not covered by this warranty. N2LOK reserves the right to modify product styles & finishes without notification. If the same product model is no longer available a similar product model will be supplied. Any accessories, spare parts & trim purchased separately to complete & compliment the lockset or hardware are not covered by this warranty.

