

N2LOK

Hardware Trading Pty Ltd

INOXUS
SERIES

LIMITED WARRANTY
7
YEAR
MECHANICAL

LIMITED WARRANTY
5
YEAR
FINISH

NOTE:

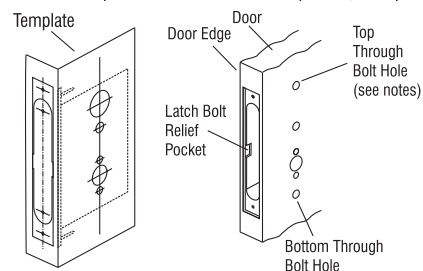
This luxury Handleset has been designed to specifically suit doors that are a minimum 41mm (1-5/8) thick to doors that are a maximum 54mm 2-1/8 thick.

Installation Instructions for Mortise Entry Handleset

Door Preparation

Mark Door

1. Select desired height for your trim to suit your door & mark with pencil.
2. Pre fold the Template to follow exactly the "Door Edge" line then position on door at the desired height, then tape into position.
3. Clearly mark the centres for all the fixing holes relevant to your selected Handle Suite trim.
4. Repeat steps 2 & 3 and mark on the other side of your door at exactly the same height.
5. On the measured centreline of your door edge, mark the centres for the series holes to create the mortise lock pocket/cavity, mark outline of the mortise lock face plate. Refer to template for all holes sizes & pocket/cavity depth.

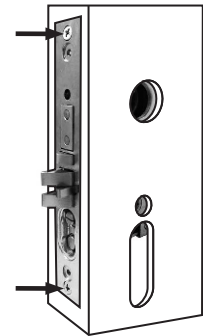


Drill Holes

6. On the door faces drill all required Fixing Holes in the different diameters at the marked centres from each side to minimize splintering, it is good practise to drill 3mm (1/8") pilot holes at the marked centres on each side of the door .
7. On the door edge on the centreline drill the 7 x 22mm (7/8") diameter holes on the previously marked series of 7 holes to a depth of 90mm (3-9/16"). Then carefully chisel out the excess timber to make a clean mortise lock pocket/cavity.
8. Chisel out the rebate for the mortise lock face plate following the outline made in step 5 to an even depth of 6.5 mm (1/4").

9. Now carefully chisel out the small Latch Bolt Relief Rebates each side of the Mortise Lock Pocket in line with the Spring Latch Assembly 10mm (3/8") below the rebate of the Face Plate completed in step 8.

10. Fit Mortise Lock into the pocket/cavity to ensure that it fits flush to door edge surface with no obstructions if okay then remove the Mortise Lock. The door is now prepared & ready for you to fit the Mortise Lock, Handle Suite Trim & Cylinder according to the Installation Instructions.



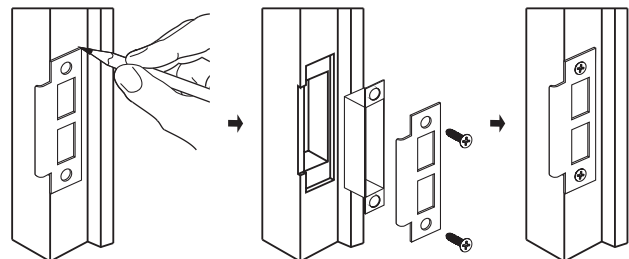
Strike Preparation

1. Almost close the door to the jamb then with pencil mark the top & bottom of the Deadbolt & low friction Latch to use to centre the Strike Plate.
2. Position & tape the Strike Template to the door frame to line up with the marks in step 1 to allow the Deadbolt & Latch to have equal clearance into the 2 cut outs in the striker.

3. Mark the series of 4 x 25mm (1") diameter holes for Strike & Dust Box along with the Strike Plate outline & the Strike attachment Fixing Screw Holes on the door jamb.

4. Note: If fitting the Strike with the Dust Box the 4 x 25mm (1") diameter holes need to be drilled to an even depth of 28mm (1-1/8") deep. If fitting the Strike without the Dust Box then the 4 x 25mm (1") diameter holes need to be drilled to an even depth of 22mm (7/8") deep.

5. Drill the 4 x 25mm (1") holes to the prescribed depth then carefully chisel out the excess timber to make a clean Strike cavity.



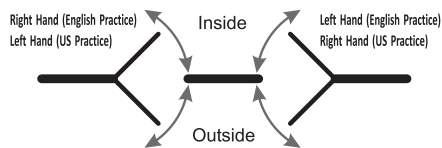
6. Place the Strike Plate in position then with a pencil mark the outline of the Strike Plate.

7. Chisel out the rebate for Strike Plate to an even depth of 3mm (1/8") if installing with the Dust Box or to an even depth of 2mm (5/64") if installing the Strike Plate without the Dust Box.

8. Now fit the Strike Plate to jamb using the 2 CSK 25mm (1") long wood screws into the 2 x 3mm (1/8") Fixing Screw Holes & tighten until firm & flush to the door jamb surface.

Mortise Lock Body Preparation

Before fitting the Mortise Lock check that the Mortise Lock Handing suits your installation to establish this note that the Spring Latch bevel must face the door jamb, refer to Handing Diagram below.



Note: The INOXUS Mortise Lock you have selected is pre Handed at the factory to suit a Left Hand Door installation as per English Handing Practise shown in the diagram above.

If you need to re- hand the Mortise Lock please follow the following instructions.

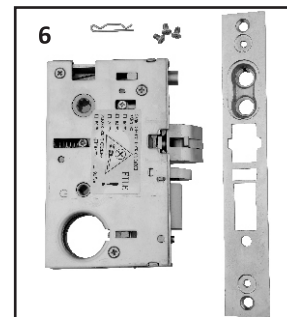
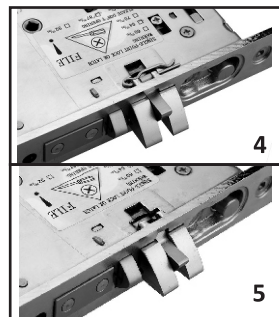
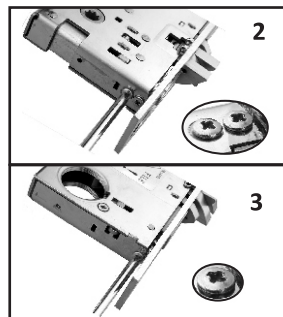
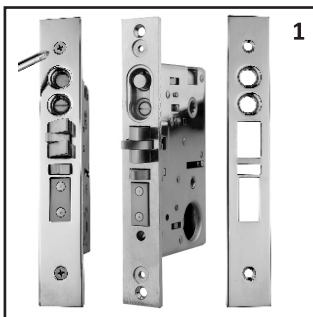
1. Remove the Face Plate by unscrewing the 2 CSK Phillips Fixing Screws at the top & bottom of the Face Plate then set aside.
2. Unscrew the 2 small Phillips Fixing Screws at the top of the Lock Case just behind the Face Plate Liner/ Sub assembly.
3. Then unscrew the single small screw at the bottom of the Lock Case just behind the Face Plate Liner/Sub assembly.
4. Remove the Split Pin which holds the Spring Latch assembly together located behind the Face Plate Liner/Sub assembly.
5. Gently remove the Face Plate Liner/Sub assembly.

6. Remove Stop Screw from the back of the Spring Latch assembly located towards the back of the Lock Case at about the half way mark.

7. Gently pull out the Spring Latch assembly just proud of the Lock Case & rotate 180 degrees then let it return to its normal position in the Lock Case.

8. Reinstall the Stop Screw into the back of the of the Spring Latch assembly.

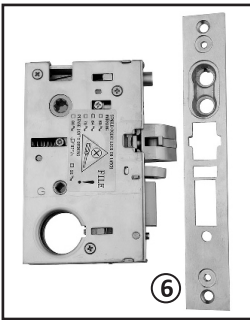
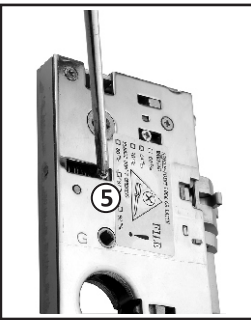
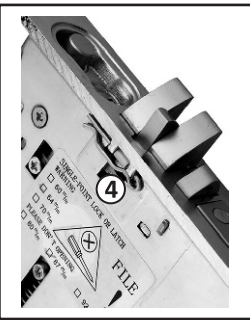
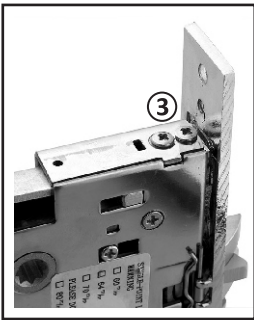
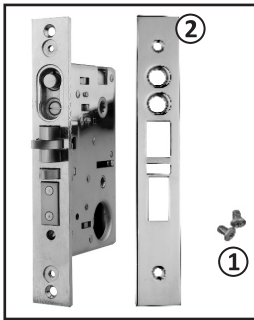
9. Place the Face Plate Liner/Sub assembly back into position over the Spring Latch & the 2 Stop Buttons ensuring that all is in line then secure with the 3 small Phillips Fixing Screws at the top & bottom of the lock case just behind the Face Plate Liner/Sub assembly, then refit the Split Pin to the Spring Latch, you have just re-handed your Mortise Lock to suit your doorway.



List of Mortise Lock Parts to relate to the Drawings

- 1: Face Plate CSK Small Fixing Screws x 2.
2: Face Plate Cover.
3: Small Dome Head Phillips Fixing Screws x 3.

- 4: Split Pin.
5: Stop Screw.
6: Face Plate Liner/Sub Assembly.



Step by Step Mortise Lock & Handle Trim Installation Procedure

Optional Cylinder Plug

Thread the Cylinder Plug into the interior side of the Mortise Lock case. Note must be located as shown with the "V" cut out facing the front of the Mortise Lock. Place a strip of tape over the cylinder plug to keep it from turning. The use of the Cylinder Plug is an option that helps maintain the working Cylinder in a more balanced manner.



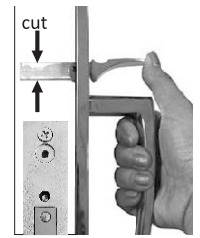
1. Slide Mortise Lock case with the Face Plate removed into the pocket/cavity in the door then fix with 2 x CSK wood screws into the Fixing Holes in top & bottom of the sub Face Plate.



2. Fit the Spindle through the main Crank from the interior side of the door until it stops then take the small Metal Thread Screw & Black Washer & tighten firmly from the exterior side of the door.

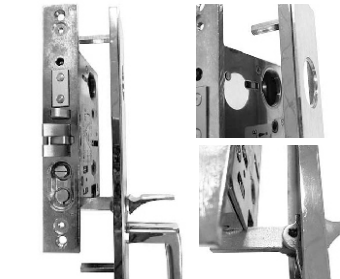
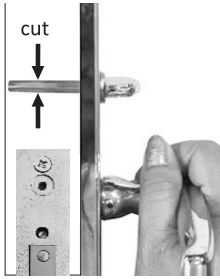


Before installing the External Handle, check the door thickness, measure the Thumb Piece then cut if necessary to the correct length so that it can fully engage & lift the spring loaded Retraction Mechanism located in the notch at the bottom of the Mortise Lock case.



Same step again for the Internal Turnsmb tailpiece, measure and cut to the proper length, so that it goes half way through the Mortise Lock Case.

Install the External Handle assembly with the cylinder hole on the External Escutcheon to align with the cylinder hole on the Mortise Lock Case, also with the Thumbpiece tailpiece fits under the notch of the Mortise Lock Case.



3. Fit the 3 through Bolts & Washers from inside of door & tighten into the 3 Receiving Posts of the external Handle Trim do not tighten yet.



4. From outside of the door insert the Cylinder through the external trim then align thread on the Cylinder with the thread on the Mortise Case then tighten the Cylinder down until flush with the external trim.

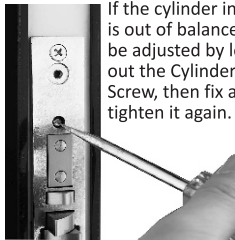
NOTE: you may need to move the external trim a little to help it seat into the external trim.



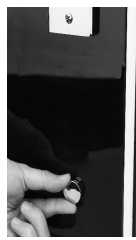
Tighten the Cylinder Set Screw by turning clockwise.

Note: Do not over tighten, do not use a power screw driver.

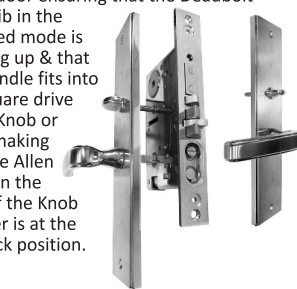
If the cylinder installed is out of balance, it can be adjusted by loosening the Cylinder Set Screw, then fix and tighten it again.



5. Now ensure that the margin between the External Trim & the door edge are consistently the same from top to bottom, then you can tighten firmly the 3 through Bolts & Washers from the inside of the door. In the case of the Patronus design Handle trim the internal side washer is slightly thicker & threaded to accept the Decoration Cover which screws onto this threaded washer.



6. Take internal Handle & fit to the inside of the door ensuring that the Deadbolt Turnsmb in the unlocked mode is pointing up & that the Spindle fits into the square drive of the Knob or Lever making sure the Allen Screw in the neck of the Knob or Lever is at the 9 o'clock position.



7. Ensure that the margin between the Internal Trim & the door edge are consistently the same from top to bottom of Trim then you can drill the 3mm (1/8") pilot holes for the 2 CSK Phillips Fixing Screws for the Patronus design Handle trim.



8. Fit & firmly tighten all 2 CSK Fixing Screws through the Internal Trim.

9. With the small Allen Key provided tighten firmly the Allen Screw in the neck until flush with neck of the Knob or Lever, your installation is now complete & ready for use.



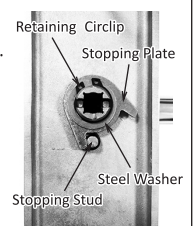
10. Install the Front Plate Cover with the 2 small CSK Fixing Screws provided.



Note: The Patronus Handleset with lever can be ordered for either Right Handed or Left Handed door. If in case you need to re-hand the lever for a different handing door installation, please follow the below steps to complete the re-handing.

- Use a pair of Circlip Pliers to remove the Retaining Circlip from the interior side of the Internal Lever Assembly.
- Then remove the Steel Washer and the Stop Plate, now the Lever can be removed from the Assembly. Remember which leg of the Stopping Plate is close to the Stopping Stud as you will need to install in the opposite direction after the Lever is reversed.
- Flip the Black Tension Spring to locate on the opposite side of the Stopping Stud.
- With the Lever in the 12 o'clock position slide into the escutcheon plate ensuring that the slot in the back of the Lever hooks onto the Black Tension Spring. To tension the Lever in the new handed direction push the Lever down to the horizontal position and hold there for the next step.
- On the back of the Lever Assembly place the Stop Plate with the other leg contacting to the Stopping Stud.
- Then put the Steel Washer over the back of the Lever Assembly and then using Circlip Pliers fit the Retaining Circlip into the Circlip groove on the back of the Lever Assembly to ensure it is firm and secure.

Now the Lever has been reversed. Please make sure that the new Lever handing matches the handing of the Mortise Lock Case if it does not match refer to "Mortise Lock Body Preparation" on the other side of this Instruction Sheet which explains how to reverse the Mortise Lock Handing step by step.



N2LOK

This product is warranted to be free from mechanical & workmanship defects for 7 years & free from finish & surface defects for 5 years from the original date of purchase. Should a mechanical or finish defect occur within this warranty period just return the product along with proof of purchase to point of purchase for replacement. Premature finish deterioration due to the use of solvents, acid cleaners, paints, climatic conditions i.e. salt air or surface abrasion by keys or jewellery is not considered a defect & thus not covered by this warranty. The same applies for mechanical failure due to the incorrect installation, misuse or abuse will not be covered by this warranty. The removal & refitting of the product & any associated handling & transportation costs is not covered by this warranty. N2LOK reserves the right to modify product styles & finishes without notification. If the same product model is no longer available a similar product model will be supplied. Any accessories, spare parts & trim purchased separately to complete & compliment the lockset or hardware are not covered by this warranty.

