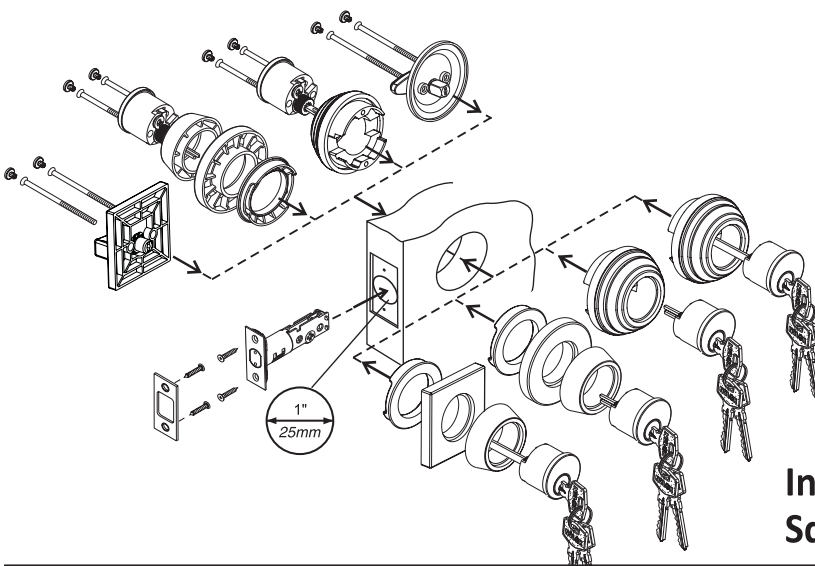


# N2LOK

Hardware Trading Pty Ltd

DOMAINE  
SERIES

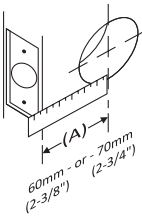
Maison  
SERIES



## Instructions for Installation of Square and Round Deadbolt

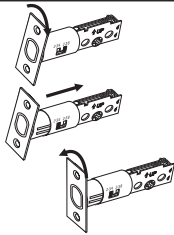
### 1. Determine Backset of Door

Measure your door for a backset (A) of 60mm(2-3/8") or 70mm(2-3/4").



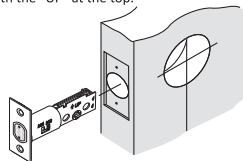
### 2. Adjust Bolt Backset

If backset (A) of door measured 70mm(2-3/4"), adjust latch as shown.



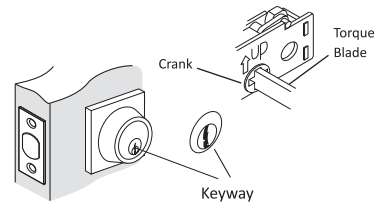
### 3. Install Bolt

Insert deadbolt latch in up position into hole as shown. Secure with screws. With the "UP" at the top.



### 4. Install Exterior Assembly

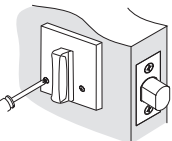
Retract the Deadbolt to the unlocked position by turning the Latch Bolt Crank with a screw driver. Place the "External Security Collar" into the 54mm cross bore hole. Slide the "External Cylinder Assembly" into the "Round Cylinder Collar", then slide these components into the "Square Rose Plate" or "Round Rose Plate", all as one assembly with the "Torque Blade" vertically insert into the Latch Bolt Crank.



### 5. Install Interior Assembly

#### For Single Cylinder Models

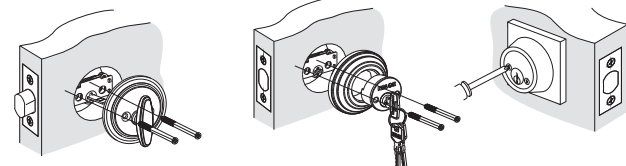
Place turnpiece assembly on door. Rotate turnpiece to vertical position, insert Phillips Head Fixing screws, engaging exterior cylinder and tighten.



#### For Double Cylinder Models

Place the "Internal Security Collar" into the 54mm(2-1/8") cross bore hole, now install the Internal Cylinder Assembly into the "Round Cylinder Collar", then slide these components onto the "Square Rose Plate" or "Round Rose Plate", all as one assembly with the Torque Blade horizontally insert into the Latch Bolt Crank.

Insert the fixing screws, engaging the External Cylinder then tighten. Test the key to see if it binds or works in reverse by throwing the Deadbolt to the locked mode, each time the key is removed from the Cylinder. Then undo the fixing screws, remove the internal assembly & twist the Torque Blade 180 degrees in the opposite direction, then reinstall the internal assembly & tighten with fixing screws.



Note: Before complete tightening the assemblies of either the single or double cylinder model, ensure that the Square Rose Plates are square to the door edge.

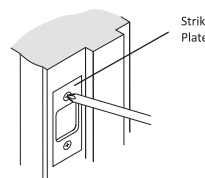
Note: There is no "Security Collar" for the Maison Series Single or Double deadbolts.

Keyway should be at the 6 o'clock position as shown during this procedure.

Note: There is no "Security Collar" for the Maison Series Single or Double deadbolts.

### 6. Install Strike

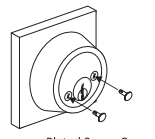
Install strike plate and secure with screws.



### 7. Install Screw Caps

For a cleaner finish, install the "Plated Screw Caps" to conceal the fixing screw on both single and double cylinder models, by pushing them into the 2 fixing screw holes until they are flush.

Note: The Plated Screw Caps are suitable with Phillip Head screw only. Not suitable with One Way Security screws.



1 FOLD HERE ON DOOR EDGE

2 MARK FOR 45mm(1 7/8") DOOR MARK FOR 35mm(1 3/8") DOOR

3 THEN DRILL 25mm(1") HOLE IN CENTER DOOR OF EDGE

## TEMPLATE

FOR INSTALLING ENTRY LOCK AND DEADBOLTS

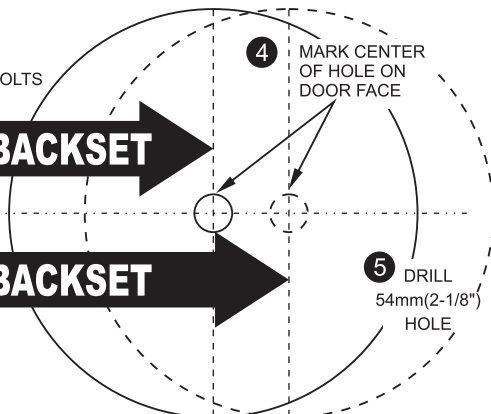
60mm(2 3/8") BACKSET

70mm(2 3/4") BACKSET

IMPORTANT! PLACE TEMPLATE ON HIGH EDGE OF DOOR BEVEL

4 MARK CENTER OF HOLE ON DOOR FACE

5 DRILL 54mm(2-1/8") HOLE

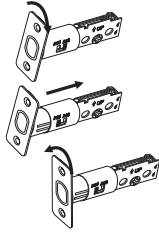


# New Door Drilling Instructions

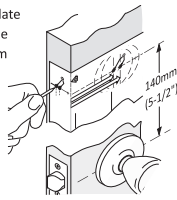
## 1. Mark Door

1-1 Measure your door for a backset (A) of 60mm(2-3/8") or 70mm(2-3/4").

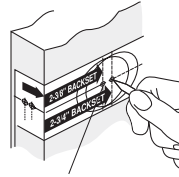
If backset (A) of door measured 70mm(2-3/4"), adjust latch as shown.



1-2 Place fold of template on door edge at the desired height from floor, recommend with centerline 140mm(5-1/2") above centerline of lockset.



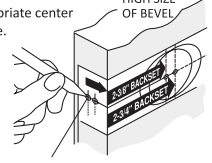
1-3 Mark center of door face hole using desired backset location.



Mark for 51mm(2") or 54mm(2-1/8") hole on door face

1-4 Mark appropriate center of door edge.

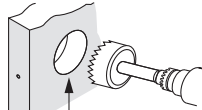
HIGH SIZE OF BEVEL



Mark for 25mm(1") hole on door edge

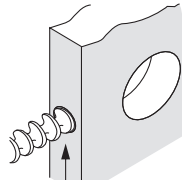
## 2. Drill Hole on Door

2-1 Drill a 51mm(2") or 54mm(2-1/8") diameter hole about halfway through door, then finish drilling from the other side to prevent splintering.



51mm(2") or 54mm(2-1/8") hole

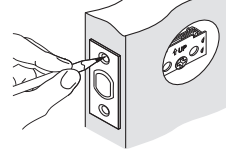
2-2 Drill a 25mm(1") diameter hole in center of the door edge.



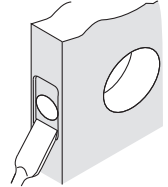
Check template for correct size for the latch application.

25mm(1") hole

2-3 Insert latch in the hole on the door edge, keeping it parallel to the face of door edge. Trace outline of plate.

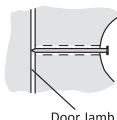


2-4 Chisel 3mm(1/8") deep or until latch face is flush to the door edge.



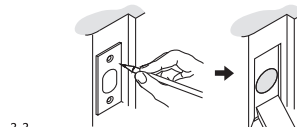
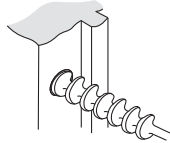
## 3. Drill Hole on Door Jamb

3-1 To mark strike plate hole location, close door and press a 51mm(2") common nail from inside the 54mm(2-1/8") hole, through pilot hole until nail makes indentation in door Jamb



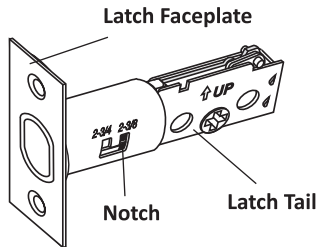
Door Jamb

3-2 Drill 25mm(1") hole minimum 25mm(1") deep in the door jamb for deadbolt.



3-3 Trace strike on door jamb and chisel out area 2mm(5/64") deep. Drill 3mm(1/8") diameter pilot holes same length of screws.

## Adjusting Bolt Backset

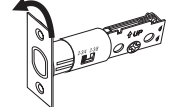
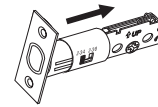
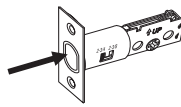


### Adjusting Backset from 60mm(2-3/8") to 70mm(2-3/4")

2. Rotate the latch tail in an upward direction until it stops.

3. When locking lug gets in the groove, pull the latch tail away from the face plate until it stops.

4. Rotate back of the latch tail in a downward direction until locking lug snaps into the 70mm (2-3/4") window.



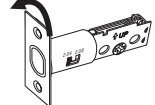
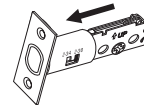
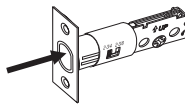
### Adjusting Backset from 70mm(2-3/4") to 60mm(2-3/8")

1. Retract the latch bolt, keep it even with the front plate. Do not allow it to extend.

2. Rotate the latch tail in an upward direction until it stops.

3. When locking lug gets in the groove, pull the latch tail towards the face plate until it stops.

4. Rotate back of the latch tail in a downward direction until locking lug snaps into the 60mm (2-3/8") window.



This product is warranted to be free from mechanical & workmanship defects for 7 years and free from finish & surface defects for 5 years from the original date of purchase. Should a mechanical or finish defect occur within this warranty period just return the product along with proof of purchase to point of purchase for replacement. Premature finish deterioration due to the use of solvents, acid cleaners, paints, climatic conditions i.e. salt air or surface abrasion by keys or jewellery is not considered a defect & thus not covered by this warranty. The same applies for mechanical failure due to the incorrect installation, misuse or abuse will not be covered by this warranty. The removal & refitting of the product & any associated handling & transportation costs is not covered by this warranty. N2LOK reserves the right to modify product styles & finishes without notification. If the same product model is no longer available a similar product model will be supplied. Any accessories, spare parts & trim purchased separately to complete & complement the lockset or hardware are not covered by this warranty.



**N2LOK**

