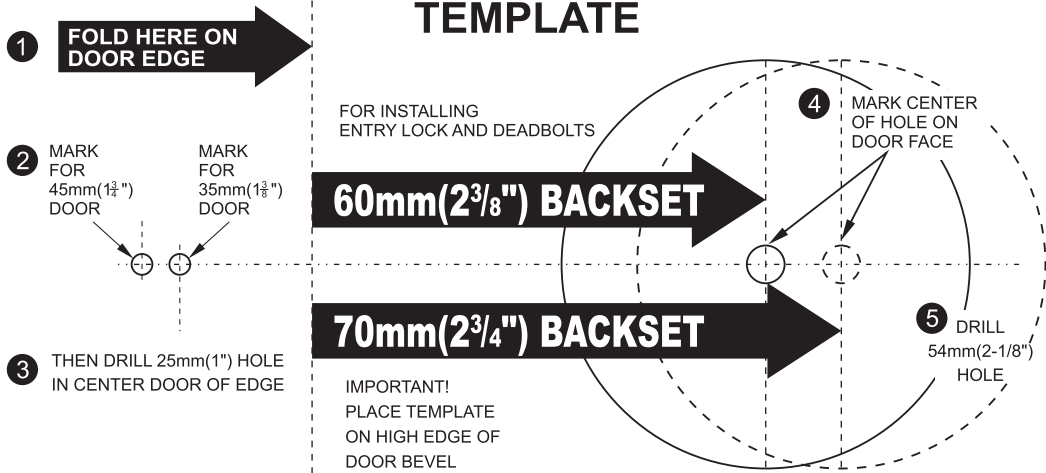
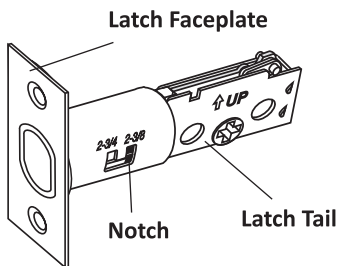


Instructions for Installation of Single and Double Cylinder Deadbolt

1. Mark Door		4. Install Exterior Assembly		5. Install Interior Assembly	
<p>1-1 Measure your door for a backset (A) of 60mm (2-3/8") or 70mm (2-3/4").</p> <p>If backset (A) of door measured 70mm (2-3/4"), adjust latch as shown.</p>	<p>1-2 Place fold of template on door edge at the desired height from floor, recommend with centerline 140mm (5-1/2") above centerline of lockset.</p>	<p>Retract the Deadbolt to the unlocked position by turning the Latch Bolt Crank with a screw driver. Install the external Cylinder & Rose assembly with the Torque Blade vertically insert into the Latch Bolt Crank.</p> <p>The Key Way should be at the 6:00 o'clock position.</p>	<p>For Single Cylinder Models</p> <p>Place turnpiece assembly on door. Rotate turnpiece to vertical position, insert screws, engaging exterior cylinder and tighten.</p> <p>Abode Series</p>		
<p>1-3 Mark center of door face hole using desired backset location.</p> <p>Mark for 51mm (2") or 54mm (2-1/8") hole on door face</p>	<p>1-4 Mark appropriate center of door edge.</p> <p>HIGH SIZE OF BEVEL</p> <p>Mark for 25mm (1") hole on door edge</p>	<p>For Double Cylinder Models</p> <p>Install the internal Cylinder & Rose assembly with the Torque Blade horizontally insert into the Latch Bolt Crank. The Key Way should be at the 6:00 o'clock position.</p> <p>Insert the fixing screws, engaging the External Cylinder then tighten. Test the key to see if it binds or works in reverse by throwing the Deadbolt to the locked mode, each time the key is removed from the Cylinder. Then undo the fixing screws, remove the internal assembly & twist the Torque Blade 180 degrees in the opposite direction, then reinstall the internal assembly & tighten with fixing screws.</p> <p>Exterior Torque Blade Interior Torque Blade</p>	<p>1. Place the interior rose liner on door, insert 2 longer fixing screws, engaging exterior cylinder and tighten.</p> <p>2. Then place turnpiece assembly, rotate turnpiece to horizontal position, secure with 2 short CSK metal thread screws to complete the installation</p> <p>Domaine Series</p>		
2. Drill Hole		6. Install Strike			
<p>2-1 Drill a 51mm (2") or 54mm (2-1/8") diameter hole about halfway through door, then finish drilling from the other side to prevent splintering.</p> <p>51mm (2") or 54mm (2-1/8") hole</p>	<p>2-2 Drill a 25mm (1") diameter hole in center of the door edge.</p> <p>Check template for correct size for the latch application.</p> <p>25mm (1") hole</p>	<p>3. Install Bolt</p> <p>3-1 Insert latch in the hole on the door edge, keeping it parallel to the face of door edge. Trace outline of plate.</p> <p>3-2 Chisel 3mm (1/8") deep or until latch face is flush to the door edge.</p> <p>3-3 Insert deadbolt latch in up position into hole as shown. Secure with screws. With the "UP" at the top.</p> <p>Note: If for Drive-in deadbolt latch, Press the latch into the 25mm (1") hole until it is flush with the door edge.</p> <p>6-1 To mark strike plate hole location, close door and press a 51mm (2") common nail from inside the 54mm (2-1/8") hole, through pilot hole until nail makes indentation in door Jamb</p> <p>Door Jamb</p> <p>6-2 Drill 25mm (1") hole minimum 25mm (1") deep in the door jamb for deadbolt.</p> <p>6-3 Trace strike on door jamb and chisel out area 2mm (5/64") deep. Drill 3mm (1/8") diameter pilot holes same length of screws.</p> <p>6-4 Install strike plate and secure with screws.</p>			



Adjusting Bolt Backset



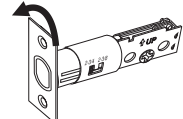
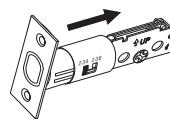
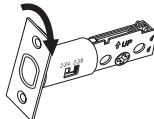
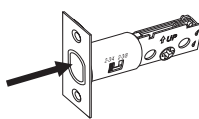
Adjusting Backset from 60mm (2-3/8") to 70mm (2-3/4")

1. Retract the latch bolt, keep it even with the front plate. Do not allow it to extend.

2. Rotate the latch tail in an upward direction until it stops.

3. When locking lug gets in the groove, pull the latch tail away from the face plate until it stops.

4. Rotate back of the latch tail in a downward direction until locking lug snaps into the 70mm (2-3/4") window.



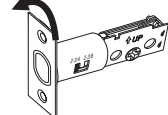
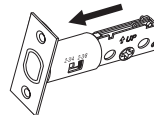
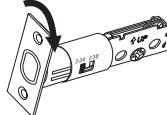
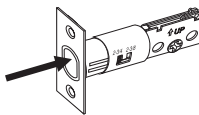
Adjusting Backset from 70mm (2-3/4") to 60mm (2-3/8")

1. Retract the latch bolt, keep it even with the front plate. Do not allow it to extend.

2. Rotate the latch tail in an upward direction until it stops.

3. When locking lug gets in the groove, pull the latch tail towards the face plate until it stops.

4. Rotate back of the latch tail in a downward direction until locking lug snaps into the 60mm (2-3/8") window.



N2LOK

This product is warranted to be free from mechanical & workmanship defects for 7 years and free from finish & surface defects for 5 years from the original date of purchase. Should a mechanical or finish defect occur within this warranty period just return the product along with proof of purchase to point of purchase for replacement. Premature finish deterioration due to the use of solvents, acid cleaners, paints, climatic conditions i.e. salt air or surface abrasion by keys or jewellery is not considered a defect & thus not covered by this warranty. The same applies for mechanical failure due to the incorrect installation, misuse or abuse will not be covered by this warranty. The removal & refitting of the product & any associated handling & transportation costs is not covered by this warranty. N2LOK reserves the right to modify product styles & finishes without notification. If the same product model is no longer available a similar product model will be supplied. Any accessories, spare parts & trim purchased separately to complete & complement the lockset or hardware are not covered by this warranty.

