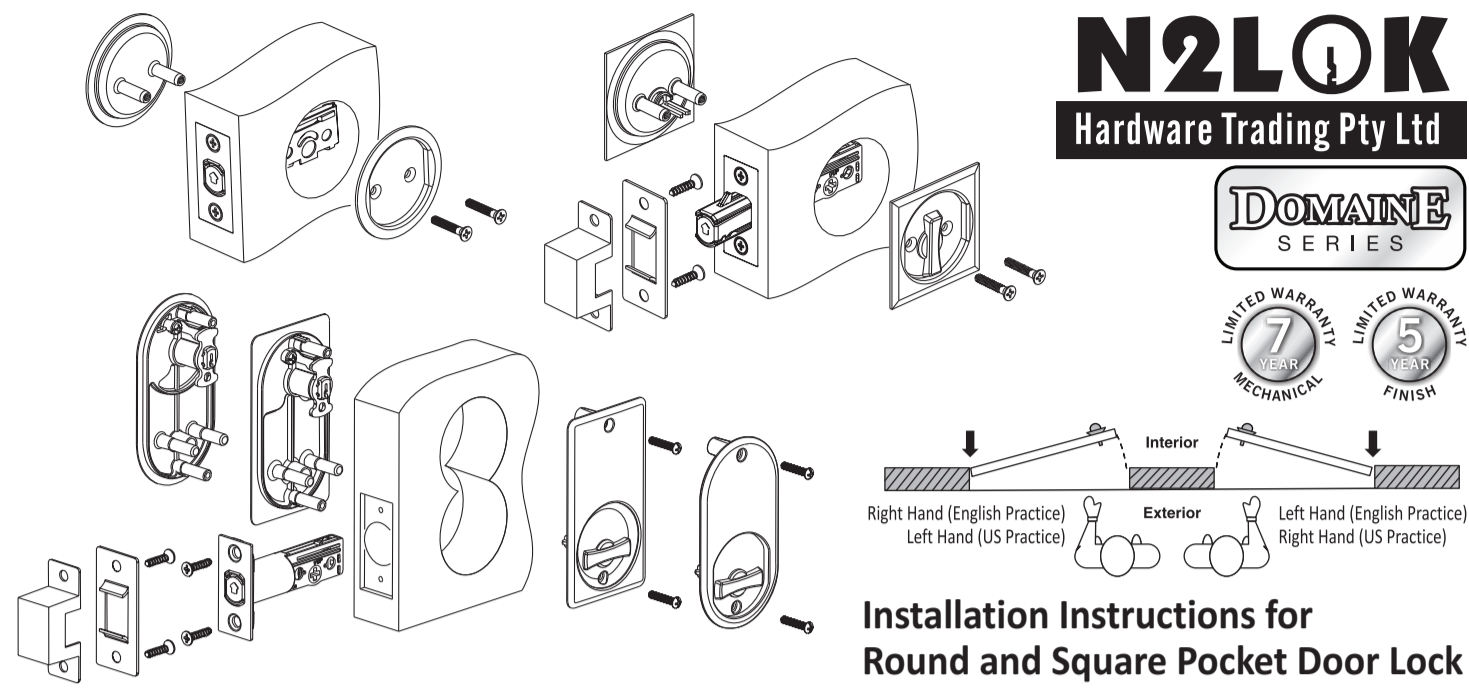


21X44CM



Installation Instructions for Round and Square Pocket Door Lock

Door Preparation

Follow Steps A, B, C, E & F for Passage Lock, A through I for Privacy & Keyed Entrance Lock

<p>A. Follow Steps 1 through 3 of template on the revert side.</p>	<p>B. Drill 3mm(1/8") diameter pilot holes where marked.</p>	<p>C. Drill the 54mm(2-1/8") hole about halfway through door, then finish drilling from the other side to prevent splintering.</p>	<p>E. Drill 25mm(1") diameter hole in door edge 51mm(2") deep for latch.</p>
<p>F. Trace face of latch in door edge and chisel out area 4mm(5/32") deep.</p>	<p>G. Place strike on jamb, aligning with the centerline drawn. Mark the four center points.</p>	<p>H. Drill a 13mm(1/2") diameter hole 32mm(1-1/4") deep at each center point marked. Chisel away any excess wood required to allow strike box to seat in jamb.</p>	<p>I. Place strike box in jamb, align strike over strike box and trace outline. Chisel out area traced, deep enough to allow strike and strike box to install flush with jamb. Place strike box and strike in jamb and mark screw hole centers. Where marked, drill 2mm(3/32") diameter pilot holes, 25mm(1") deep.</p>

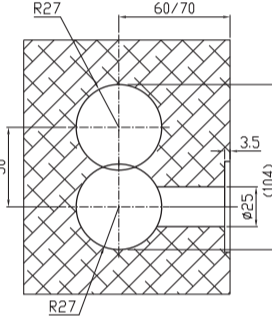
Special notes for Keyed Entrance Lock

J. Drill Holes on existing door

For replacement doors which already has the 54mm(2-1/8") bore hole and the 25mm(1") latch hole on the center line of the 54mm(2-1/8") bored hole, follow the below steps to complete the process of hole modification and additional hole drilling.

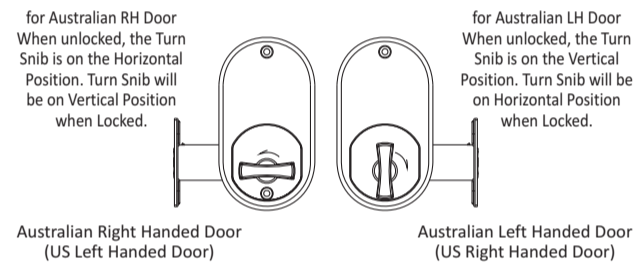
Carefully mark the center for another 54mm(2-1/8") hole on top at exactly 50mm away from the center of existing 54mm(2-1/8") bored hole, refer to the template.

Drill the additional 54mm(2-1/8") hole following the step B & C, align the outer tangent line of the two bored holes to be perfectly parallel on both sides of the door. Then chisel out or use a router on both sides of the door to remove this area from inside the line to make a complete oval-shaped hole with straight sides.



K. Determine Handing of Door

For the Lockable Keyed Entrance Lock, installation of the Latch and Interior Assembly is different for the RH and LH door.



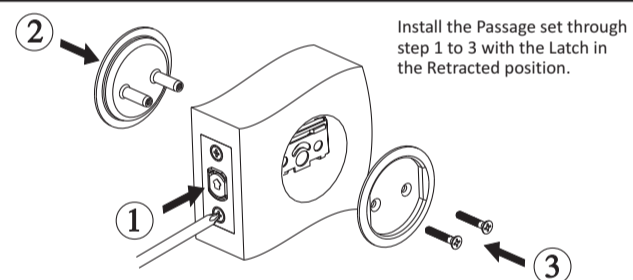
Latch Preparation

L. Determine Backset of Door

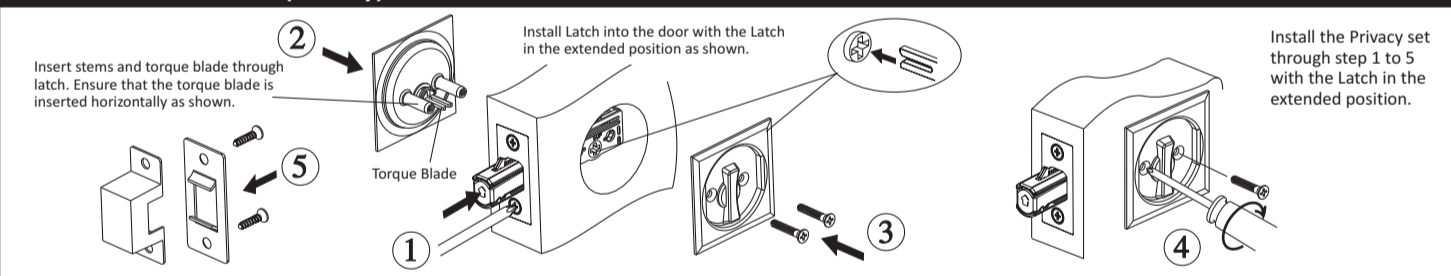
The RPDL & SPDL is supplied with one Latch at Standard 60mm backset. If an optional 70mm backset Latch is required, please order separately from the store or the distributor.



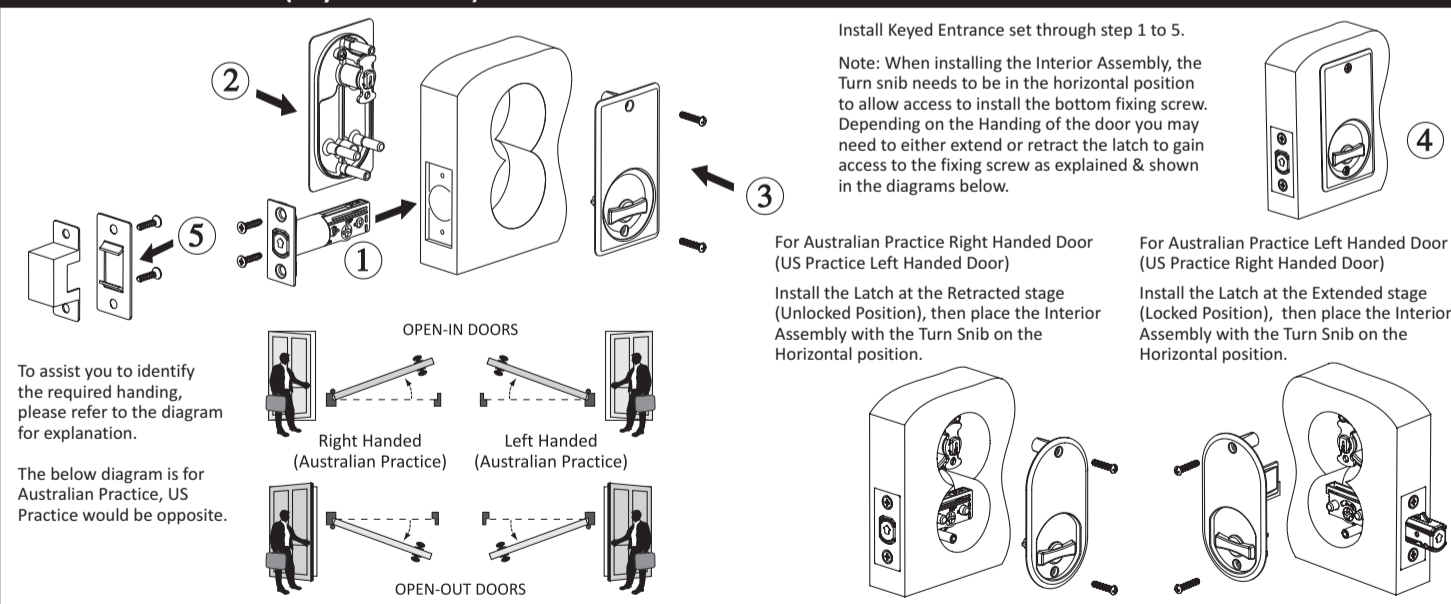
Installation Instruction (Passage)



Installation Instruction (Privacy)



Installation Instruction (Keyed Entrance)

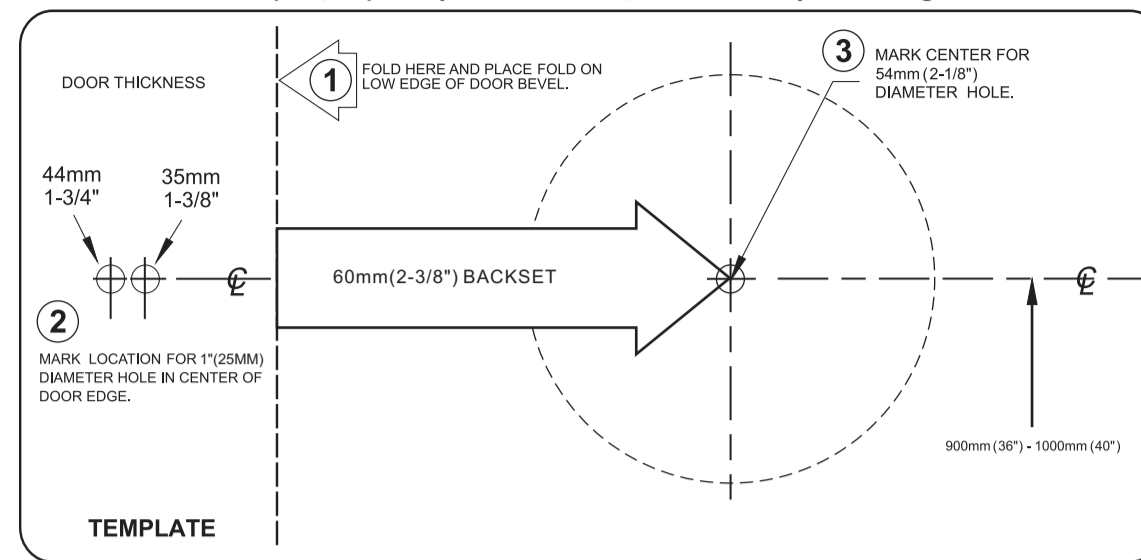


This product is warranted to be free from mechanical & workmanship defects for 7 years and free from finish & surface defects for 5 years from the original date of purchase. Should a mechanical or finish defect occur within this warranty period just return the product along with proof of purchase to point of purchase for replacement. Premature finish deterioration due to the use of solvents, acid cleaners, paints, climatic conditions i.e. salt air or surface abrasion by keys or jewellery is not considered a defect & thus not covered by this warranty. The same applies for mechanical failure due to the incorrect installation, misuse or abuse will not be covered by this warranty. The removal & refitting of the product & any associated handling & transportation costs is not covered by this warranty. N2LOK reserves the right to modify product styles & finishes without notification. If the same product model is no longer available a similar product model will be supplied. Any accessories, spare parts & trim purchased separately to complete & compliment the lockset or hardware are not covered by this warranty.

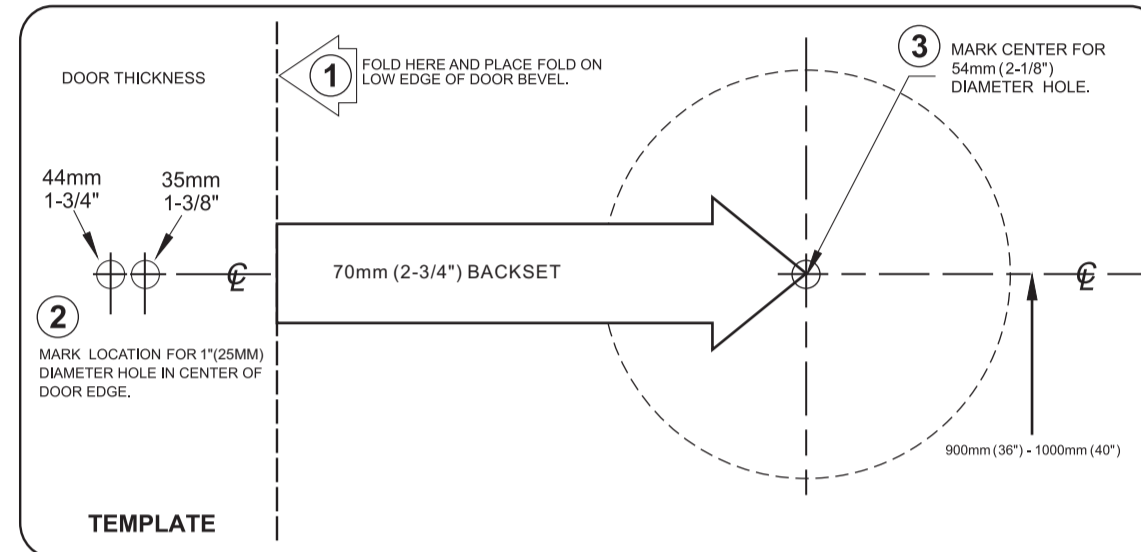
** Matte Black finish warranty is 12 months only



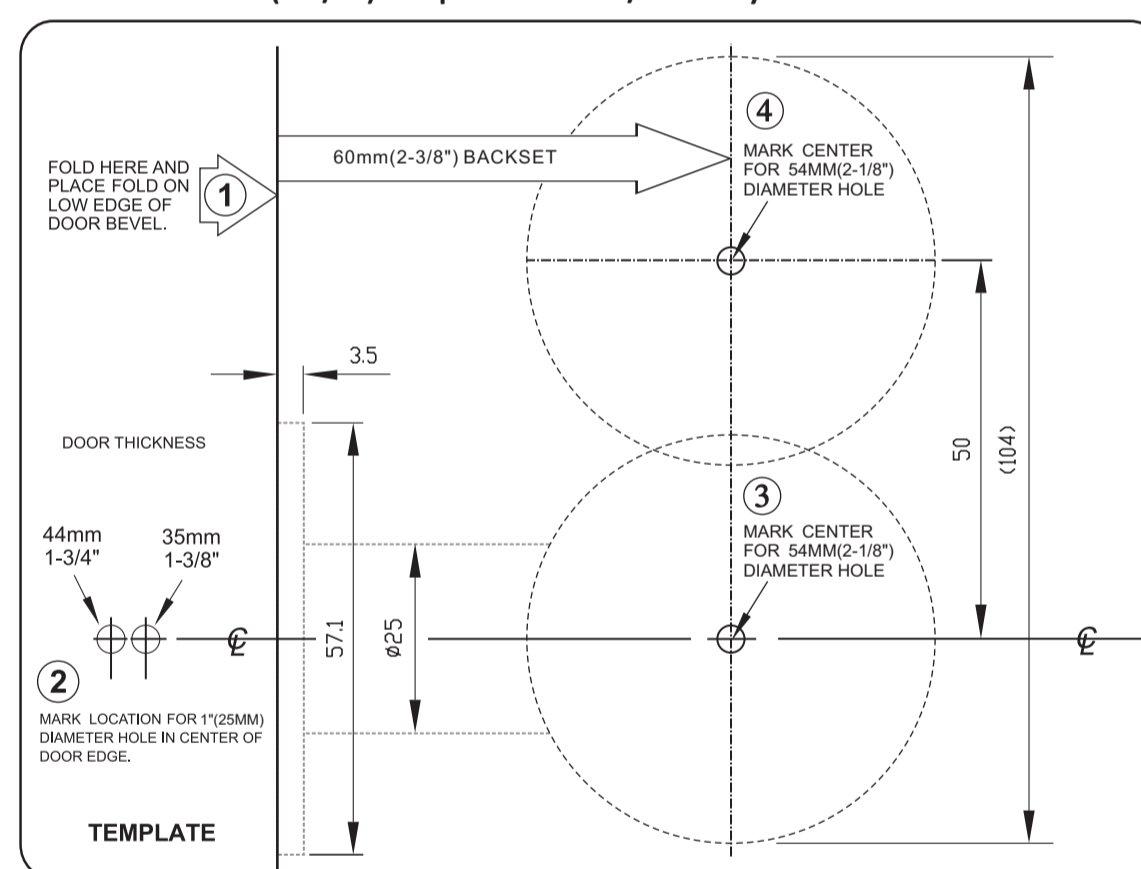
Standard 60mm(2-3/8") Template for RPDL/SPDL Privacy & Passage set



Non Standard Optional 70mm(2-3/4") Template for use when the 70mm(2-3/4") Backset Latch is ordered separately



Standard 60mm(2-3/8") Template for RPDL/SPDL Keyed Entrance set



Non Standard Optional 70mm(2-3/4") Template for use when the 70mm(2-3/4") Backset Latch is ordered separately

