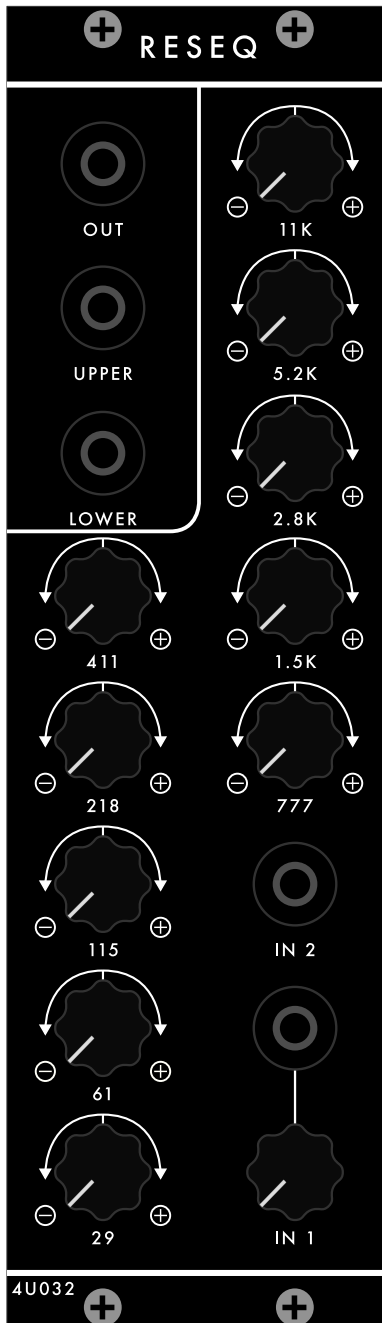
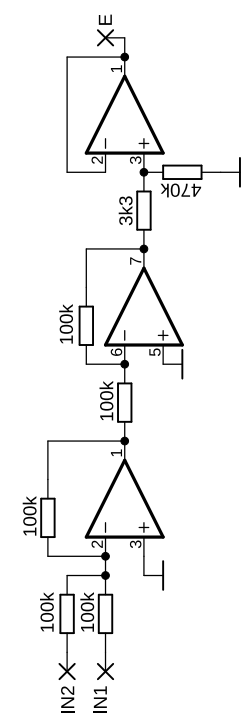
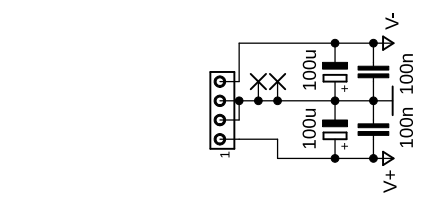
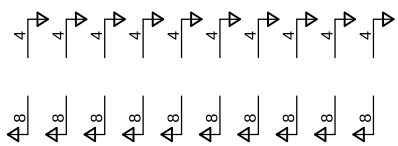
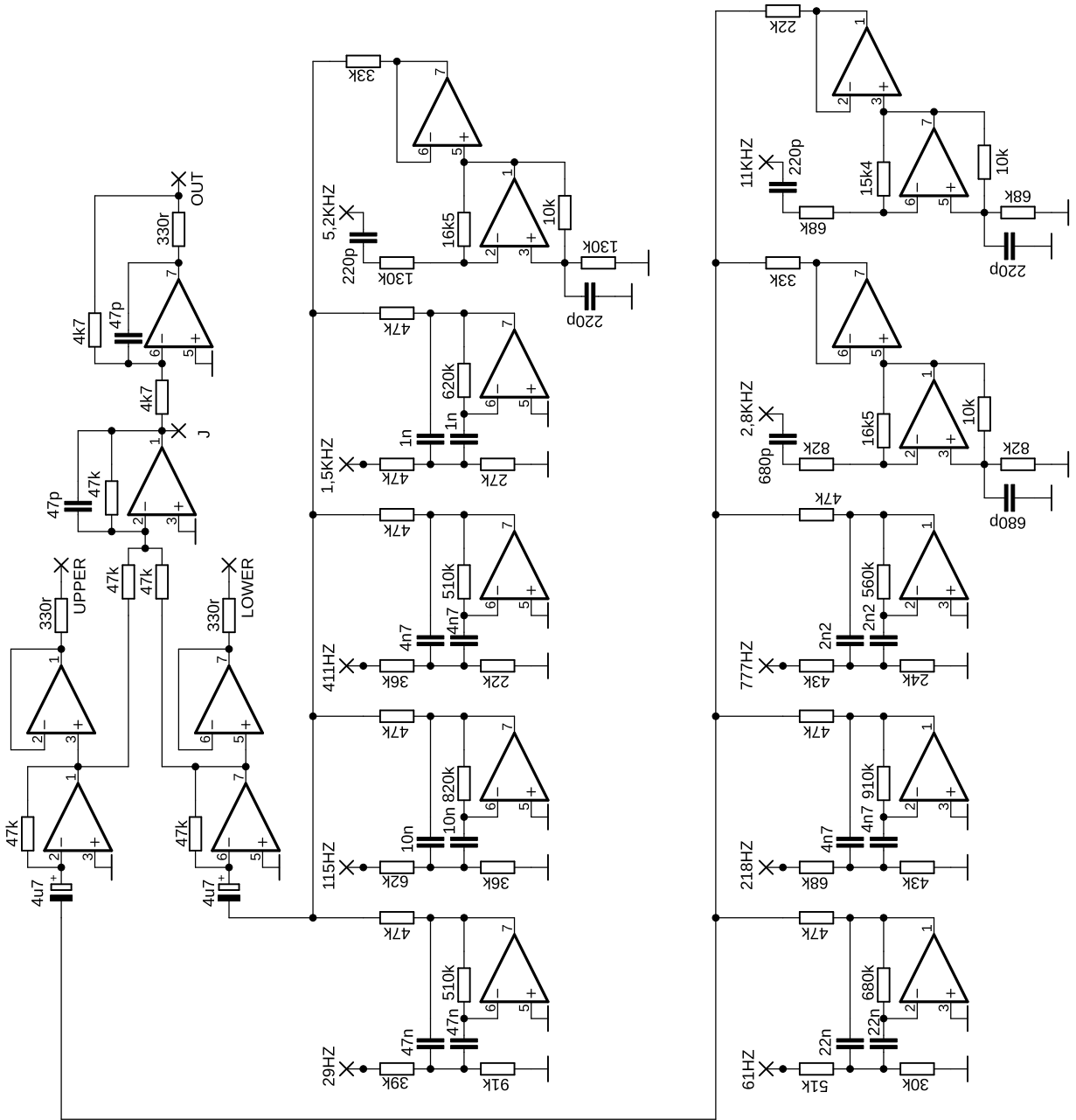


4U032 - ResEQ



Schematic



BOM

4U032 - ResEQ

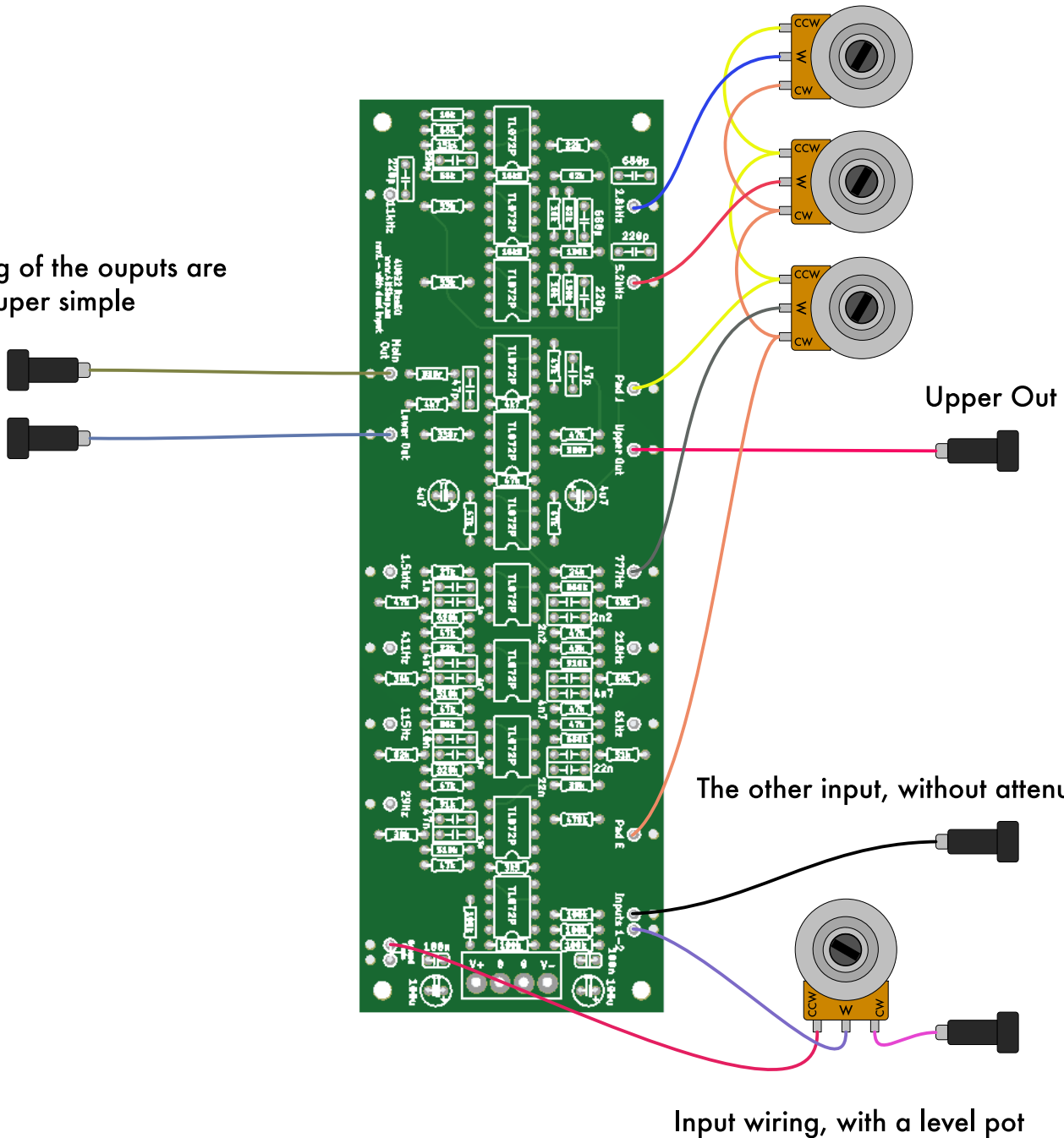
a one of a kind resonant equaliser design, with and additional extra input (for feedback madness)

Value, name	Quantity	Remark
Capacitors		
100uF	2	electrolytic, 35V
100nF	2	small footprint ceramic
47pF	2	
220pF	4	
680pF	2	
1nF	2	
2n2	2	
4n7	4	
10nF	2	
22nF	2	
47nF	2	
4u7	2	electrolytic, 35V
Resistors		
330R	3	
3k3	1	
4k7	2	
10k	3	
15k4	1	
16k5	2	
22k	2	
24k	1	
27k	1	
30k	1	
33k	2	
36k	2	
39k	1	
43k	2	
47k	13	
51k	1	
62k	1	
68k	3	
82k	2	
91k	1	
100k	5	
130k	2	
470k	1	
510k	2	
560k	1	
620k	1	
680k	1	
820k	1	
910k	1	
100k pots	11	linear, but feel free to experiment with log. for the 2nd input
Semiconductors		
TL072	11	
Misc		
banana jack - BLACK	5	

Wiring

Wiring example for a few pots.
Note, middle pin of the band goes to the correct pad;
CCWs go to pad J, CWs go to pad E

The wiring of the outputs are super simple



All pots, except the second input pot is wired in the same way.
Second input with the above passive attenuator pot is "extra", compared to the original design - it could be used instantly for feedback patches.