

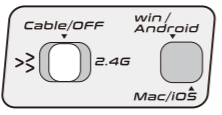


KEYSME

LUNAR 01

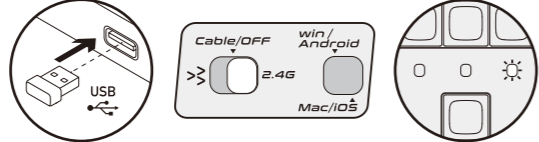
Connect Wired

Connect wired device with the cable, then turn the switch to the **Cable/OFF** mode.



Connect 2.4G Wireless

Connect the dongle to the device. Turn the switch to the **2.4G** mode. The indicator light will start flashing once a second when pairing. The indicator light will start flashing quickly and the light will stay on when pairing is successful. If the pairing cannot be performed or the pairing times out, please repeat the above steps. Press **FN +** (for 3 seconds) until pairing is successful.



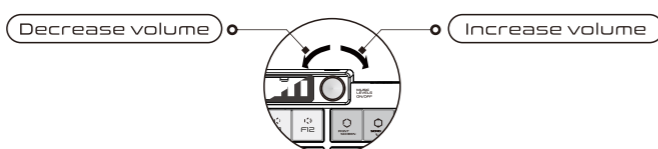
Connect Bluetooth

Turn the switch to the **BT** mode. Bluetooth mode can connect up to three devices. Press **FN1**, **FN2** and **FN3** to switch devices. Press **FN1**, **FN2** or **FN3** for 3 seconds and pair with device named **KEYSME Lunar 01**. The indicator light will light up red, green, and blue to correspond to the three channels. The indicator light flashing once a second when pairing. The indicator light flashing quickly and the light will stay on when pairing is successful.



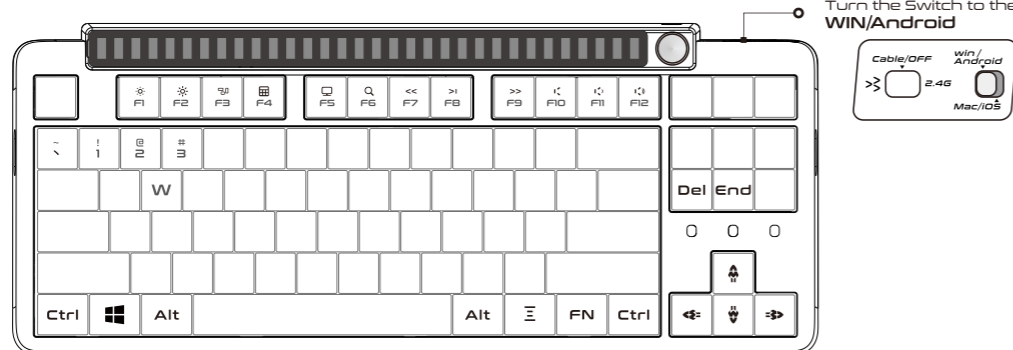
Knob Set

Press the knob once to switch the pickup lamp mode. Turn the pickup lamp on or off when press for 1 second.



Compatibility Windows/Android

Note: some shortcuts may require system support



Win/Android mode shortcuts

- FN+F1** Decrease screen brightness
- FN+F2** Increase screen brightness
- FN+F3** Open the mission control
- FN+F4** Open the explorer
- FN+F5** Open the calculator
- FN+F6** Open the computer window
- FN+F7** Previous track
- FN+F8** Play/Pause
- FN+F9** Next track
- FN+F10** Mute
- FN+F11** Decrease volume
- FN+F12** Increase volume
- FN+↑** Increase backlight brightness
- FN+↓** Decrease backlight brightness
- FN+←** Increase backlight speed
- FN+→** Decrease backlight speed
- FN+DEL** Switch backlight mode
- FN+END** Switch backlight color
- FN+W** Interchange positions of WASD and ↑↓←→
- FN+WIN** The WIN key is disabled. The WIN key's light will turn off.
- FN+~** 2.4G Model Press for 3 seconds and pair with 2.4G
- FN1** BT Channel 1 Press for 3 seconds and pair with BT Channel 1
- FN2** BT Channel 2 Press for 3 seconds and pair with BT Channel 2
- FN3** BT Channel 3 Press for 3 seconds and pair with BT Channel 3

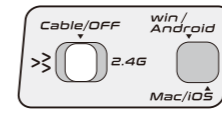


KEYSME

LUNAR 01

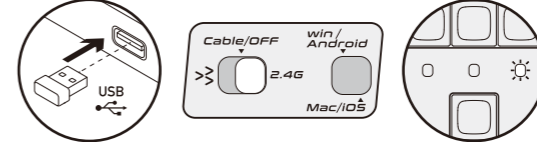
有线连接

用数据线将键盘与设备连接好, 将开关拨到Cable/OFF档位。



2.4G无线连接

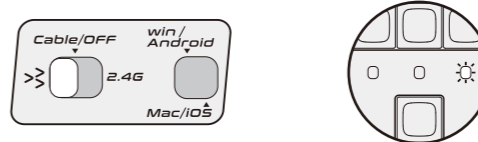
将无线接收器与设备连接好, 将开关拨到2.4G档位, 指示灯1秒闪烁一次表示正在配对中, 当指示灯快速闪烁后常亮表示配对成功。若无法自动配对或配对超时, 请重复上述步骤, 并按住FN+ 3秒进入配对模式。



蓝牙连接

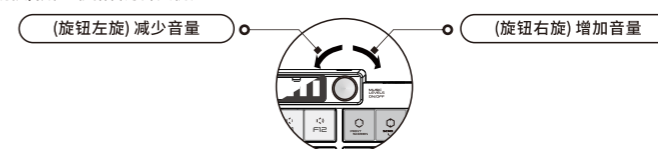
将开关拨到蓝牙 BT 档位。

蓝牙模式可连接三个设备, 按FN+1、FN+2、FN+3切换设备。按住FN+1、FN+2、FN+3 3秒进入配对模式, 键盘配名为: KEYSME Lunar 01, 指示灯红色、绿色、蓝色对应三个通道, 1秒闪烁一次表示正在配对中, 当指示灯快速闪烁后常亮表示配对成功。



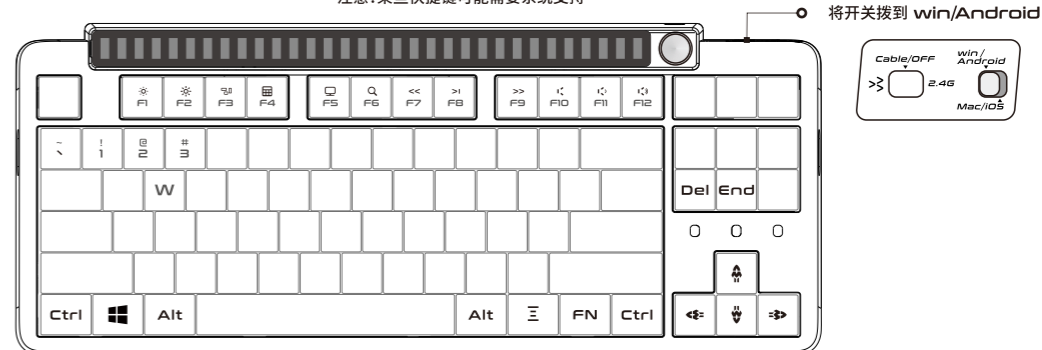
旋钮设置

旋钮按一下拾音灯模式切换, 按住1秒拾音灯开关机。



键盘快捷键 Windows/Android

注意: 某些快捷键可能需要系统支持

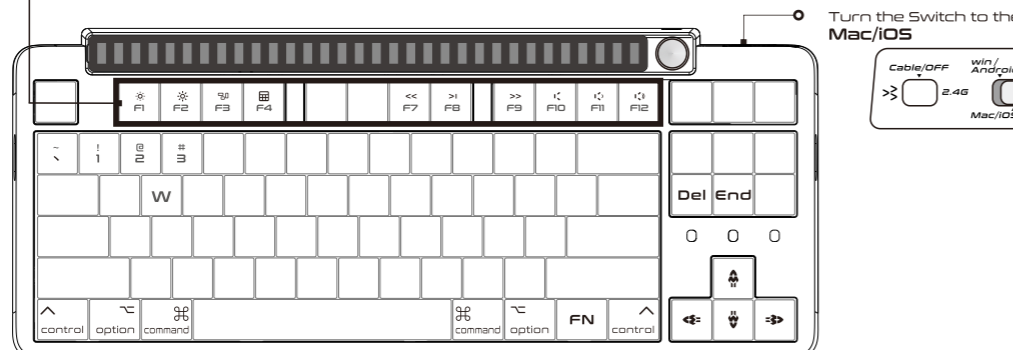


Win/Android 快捷键

- FN+F1** 屏幕亮度降低
- FN+F2** 屏幕亮度升高
- FN+F3** 打开任务中心
- FN+F4** 打开桌面管理器
- FN+F5** 打开计算器
- FN+F6** 上一曲
- FN+F7** 播放/暂停
- FN+F8** 下一曲
- FN+F9** 静音
- FN+F10** 减小音量
- FN+F11** 增大音量
- FN+↑** 键盘灯光亮度增加
- FN+↓** 键盘灯光亮度降低
- FN+←** 键盘灯光速度降低
- FN+→** 键盘灯光速度增加
- FN+DEL** 切换键盘灯光模式
- FN+END** 切换键盘灯光颜色
- FN+W** 将WASD与↑↓←→对调
- FN+WIN** 锁WIN, 锁定后WIN键的灯熄灭
- FN+~** 2.4G模式时, 长按3秒进入2.4G配对模式
- FN1** 蓝牙通道1, 长按3秒进入蓝牙通道1配对模式
- FN2** 蓝牙通道2, 长按3秒进入蓝牙通道2配对模式
- FN3** 蓝牙通道3, 长按3秒进入蓝牙通道3配对模式

Compatibility Mac/iOS

Note: some shortcuts may require system support

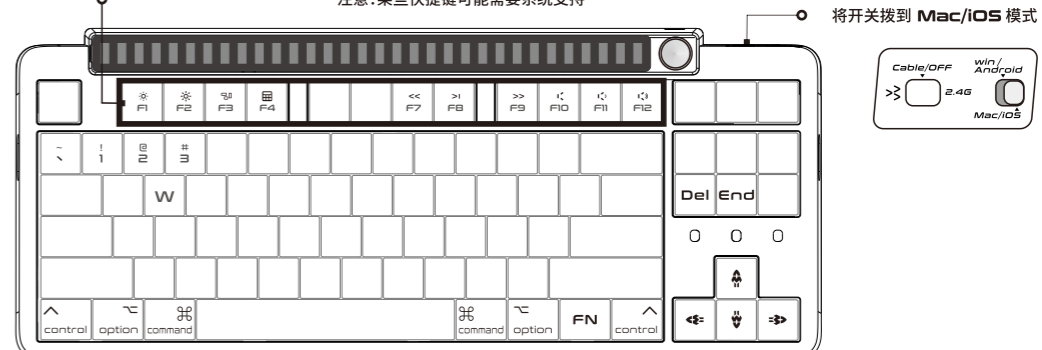


Mac/iOS mode shortcuts

- FN+F1** Decrease screen brightness
- FN+F2** Increase screen brightness
- FN+F3** Open the mission control
- FN+F4** Open the Launchpad
- FN+F7** Previous track
- FN+F8** Play/Pause
- FN+F9** Next track
- FN+F10** Mute
- FN+F11** Decrease volume
- FN+F12** Increase volume
- FN+↑** Increase backlight brightness
- FN+↓** Decrease backlight brightness
- FN+←** Increase backlight speed
- FN+→** Decrease backlight speed
- FN+DEL** Switch backlight mode
- FN+END** Switch backlight color
- FN+W** Interchange positions of WASD and ↑↓←→
- FN+WIN** The WIN key is disabled. The WIN key's light will turn off.
- FN+~** 2.4G Model Press for 3 seconds and pair with 2.4G
- FN1** BT Channel 1 Press for 3 seconds and pair with BT Channel 1
- FN2** BT Channel 2 Press for 3 seconds and pair with BT Channel 2
- FN3** BT Channel 3 Press for 3 seconds and pair with BT Channel 3

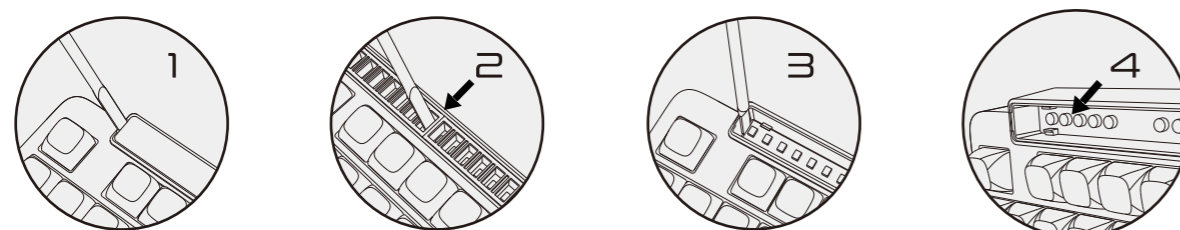
键盘快捷键 Mac/iOS

注意: 某些快捷键可能需要系统支持



Mac/iOS 快捷键

- FN+F1** 屏幕亮度降低
- FN+F2** 屏幕亮度升高
- FN+F3** MAC 任务中心
- FN+F4** MAC 启动台
- FN+F7** 上一曲
- FN+F8** 播放/暂停
- FN+F9** 下一曲
- FN+F10** 静音
- FN+F11** 减小音量
- FN+F12** 增大音量
- FN+↑** 键盘灯光亮度增加
- FN+↓** 键盘灯光亮度降低
- FN+←** 键盘灯光速度降低
- FN+→** 键盘灯光速度增加
- FN+DEL** 切换键盘灯光模式
- FN+END** 切换键盘灯光颜色
- FN+W** 将WASD与↑↓←→对调
- FN+WIN** 锁WIN, 锁定后WIN键的灯熄灭
- FN+~** 2.4G模式时, 长按3秒进入2.4G配对模式
- FN1** 蓝牙通道1, 长按3秒进入蓝牙通道1配对模式
- FN2** 蓝牙通道2, 长按3秒进入蓝牙通道2配对模式
- FN3** 蓝牙通道3, 长按3秒进入蓝牙通道3配对模式

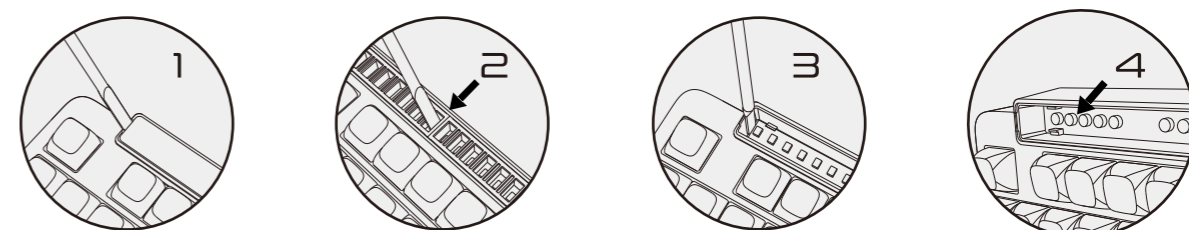
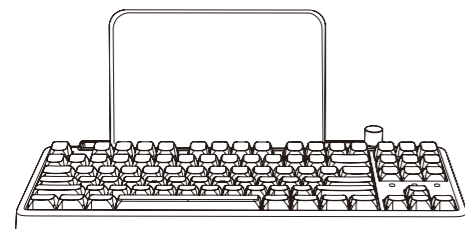


PHONE / PAD STAND MODE

Use the attached crowbar to tilt up the cover plate, body and PCBA on the pickup lamp to remove it.

Once the pickup lamp has been removed you will then be able to use a tablet or phone instead. You can also match your favorite building block toys to make your keyboard unique.

Warning: Please store the removed parts carefully, keep parts out of reach of children to prevent any accidents and choking hazards.

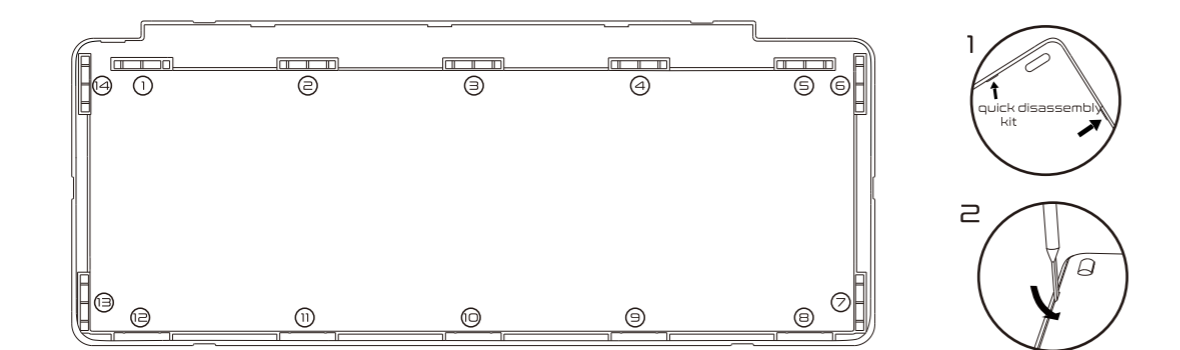
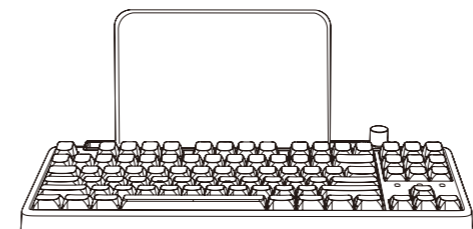


手机/平板支架模式

借用附送的撬棒依次将拾音灯盖板、支架、电路板翘起, 您就可以将手机/平板直接置于键盘上使用。

拾音灯电路板下方的脚柱可以适配积木, 您可以搭配喜爱的积木使您的键盘独一无二。

警告: 请小心的收纳好拆下的零件, 将其放在儿童接触不到的地方, 以防发生意外引发窒息。

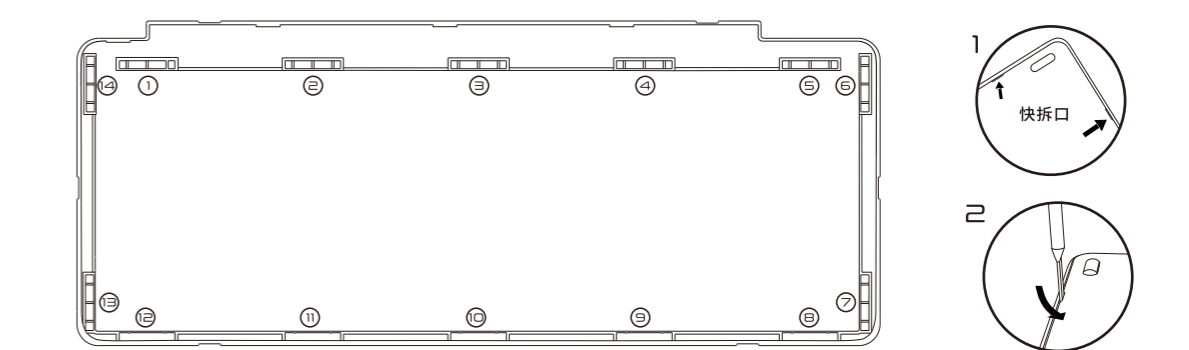
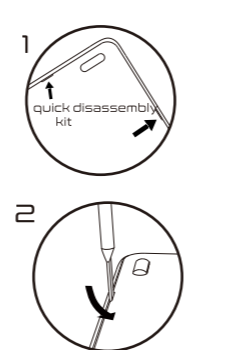


Adjust Typing feel

Place a towel on the table, place the keyboard back up on the towel, and insert the attached crowbar into the reserved quick disassembly kit, pry the shell in the direction as shown in the figure and remove the bottom case.

As shown in the figure, the bottom case of the keyboard has 14 gasket slots, you can use the silicone gasket supplied in the package for replacement, or adjust the quantity and position of the gasket to obtain the desired elastic feel.

Warning: Please store the removed parts carefully, keep parts out of reach of children to prevent any accidents and choking hazards.



调整打字手感/打字音

在桌面上铺一张毛巾, 将键盘背面朝上放置在毛巾上, 使用附送的撬棒插入预留的快拆口, 按如图的方向撬开外壳, 将下盖取下。

如图, 键盘下盖有14个垫片槽, 您可以使用包装内附送的硅胶垫片进行替换, 或调整垫片数量及位置, 获得想要的弹性手感。

警告: 请小心的收纳好拆下的零件, 将其放在儿童接触不到的地方, 以防发生意外引发窒息。

Battery & Charging

This keyboard contains two lithium batteries, total capacity 4000mAh/3.7V/14.8Wh.

It can be charged when the keyboard is connected to the powered on device with a cable. Use USB3.0 or 5V/2A DC adapter for charging speed up.

When using 5V/2A DC adapter, the keyboard is expected to take 7 hours to be fully charged.

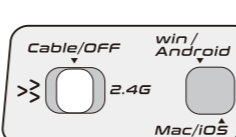
Note: this product supports up to 5V charging voltage and 2A charging current, and it must be charged with a DC power. We are not responsible for any problems caused by improper charging.

Indicator light is breathing during charging, the indicator light lights on when the battery is not charged.

The indicator light lights **Green** when high battery. The indicator light lights **Orange** when middle battery. The indicator light lights **Red** when low battery. The indicator light lights on **Blue** after being fully charged.



Travel NOTE: In some special security inspection occasions (such as airports), please turn the keyboard to the **Cable/OFF** mode and do not connect the cable. It is recommended to carry this manual together to inform relevant security personnel. Please ask the local staff if you can check in or take the keyboard with you when you fly.



电池与充电

本键盘内含有两块锂电池, 总容量4000mAh/3.7V/14.8Wh。

用数据线将键盘与开机的设备连接时即可充电, 若要加快充电时间, 建议使用USB3.0接口或使用5V/2A直流电源适配器进行充电。以5V/2A直流电源适配器为例, 键盘没电自动关机情况下充满预计7小时。

注意: 本产品需使用直流电源进行充电, 充电电压不得高于5V, 充电电流不得高于2A, 因使用超过限制的电源适配器进行充电而产生的问题, 将不属于产品质量问题。

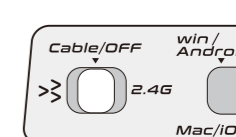
指示灯状态: 充电时呼吸, 未充电时常亮

高电量状态时, 指示灯将显示 绿色
中电量状态时, 指示灯将显示 橙色
低电量状态时, 指示灯将显示 红色
充满电状态时, 指示灯将显示 蓝色 常亮



旅行建议:

在一些特殊安检场合 (如机场) 请将开关拨到Cable/OFF档位, 并不要插入数据线, 建议将本说明书共同携带以告知相关安保人员。乘坐飞机等情况可托运或随身携带并询问当地工作人员。



Battery saver

When keyboard connects device with the cable, it won't enter into battery saver mode. When keyboard connects device with 2.4G wireless or bluetooth, it will enter into battery saver mode:

1. When keyboard is inactive for 10 minutes.
2. After sleep / shutdown of the device connected to the keyboard.
3. Keyboard disconnected from device.

You can tap any button to wake the keyboard.

Remap keys and macro

Please download software running on windows from www.keysme.com.

Factory reset

Press and hold **FN + M + K** for 3 seconds.

Wireless transmission

It is not recommended that use the keyboard more than 10 meters from the device. There are metal frame objects between the keyboard and the device, blocked by walls, or the keyboard is resting on the metal surface, which may affect the signal effect.

It is recommended to use **Cable/OFF** mode or **2.4G** mode for games. The polling rate of Cable and 2.4G wireless mode connection is 1000Hz, this may add your gaming experience.



休眠功能

当键盘使用有线连接时, 不会休眠。

当键盘使用2.4G无线/蓝牙连接时, 以下情况键盘将进入休眠状态:

1. 键盘连续10分钟无任何操作。
2. 与键盘连接的设备休眠/关机后。
3. 键盘与设备断开连接。

按下任何按键将唤醒键盘。

按键自定义与宏功能

请前往 www.keysme.com 下载驱动。

恢复出厂设置

按住 **FN + K + M** 三秒。

无线传输

建议键盘与设备之间不超过10米进行使用。键盘与设备之间有金属框架物品、墙壁遮挡或键盘置于金属表面上可能影响信号效果。建议使用有线或2.4G模式进行游戏, 有线或2.4G模式回报率为1000Hz, 您的游戏体验将会更好。

