

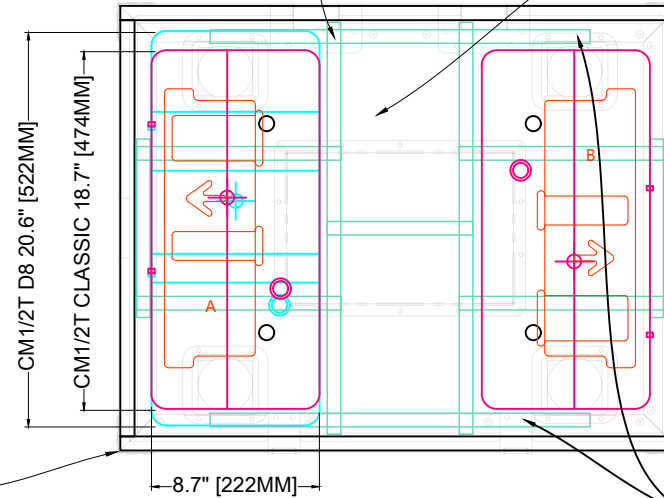
THIS INSERT IS COMPATIBLE IN FOOTPRINTS:
24 X 30



THIS INSERT IS DESIGNED FOR CM1/2T MOTORS:
CLASSIC - WITH ADAPTORS INSTALLED
D8 - WITHOUT ADAPTORS

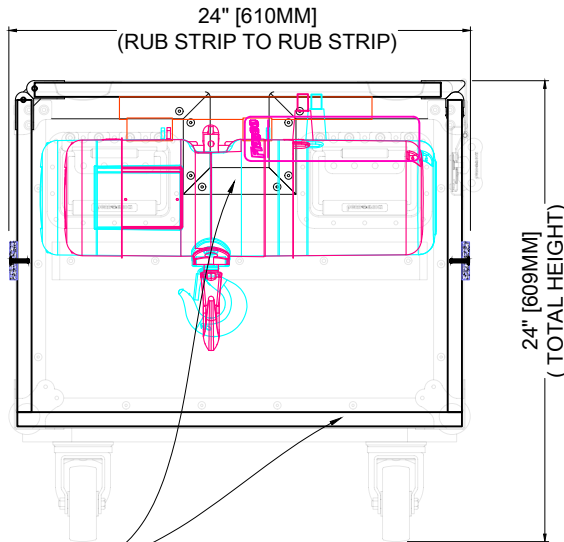
CHEMICAL RESISTANT RESIN
IMPREGNATED 3/4" BIRCH PLY
WITH BLACK HEX PATTERN

CHAIN TRAVELS IN MIDDLE
POCKETS

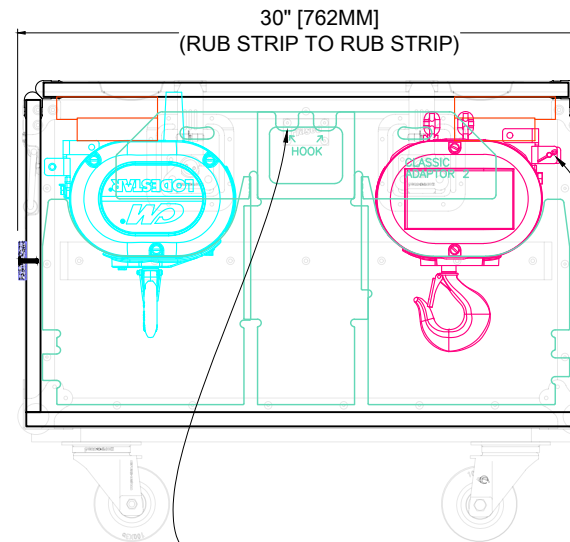


VIEW LOOKING INTO CLOSED LID
EVA FOAM HOLD DOWN PINS MOTOR
INTO INSERT ALLOWING THIS CASE
TO BE TIPPED

CM1T CLASSIC ADAPTORS:
REMOVE FOR CM1T D8



A COMBINATION OF CABLE CUTOUTS
AND DRAINAGE HOLES PROVIDE
VENTILATION, REDUCING CORROSION
OF MOTORS

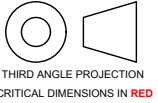


CHAIN HOOK STORES
ON CHAIN POCKET
DIVIDER

CHAIN BAG MUST BE
REMOVED FROM HOIST IN
ORDER TO FIT MOTORS IN

PHONE: (323) 528-2430
EMAIL: SALES@FIASCOCASES.COM

| VERSION HISTORY | NOTES |
|------------------------|----------|
| # | DATE |
| 5.01 | 12-12-23 |
| DESIGNED AND VALIDATED | |



**24 X 30 LOW CADILLAC MOTOR
INSERT CM1_2T 2UP V5.01**

PRODUCT SPEC SHEET

| | |
|--------------------------|----------------------------|
| DATE | |
| 12-12-23 | |
| DESIGNED | |
| RYAN HORRELL | |
| CUSTOMER PROJECT MANAGER | |
| MATT WATERHOUSE | |
| SCALE | 1:10 |
| PAPER | A4 |
| FILE | 24 X 30 LOW CADILLAC MOTOR |
| PLOT | 24/01/2024 01:49 PM |
| SHEET | 1 OF 1 |

