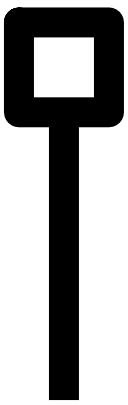


TEXT2 FEATURES



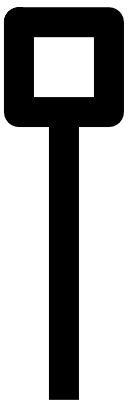
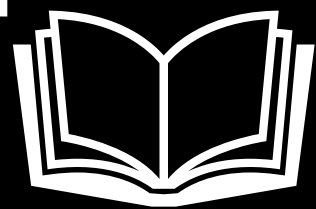
TEXT TO SPEECH

OCR recognition, scan words or lines in a second. Real-time text-to-speech aids reading difficulties with up to 98% accuracy on paper, digital screens, and more.



IN-BUILT DICTIONARY

Delve into texts, unravel complex concepts, and truly understand every word. You can swiftly access the Collins English Dictionary.



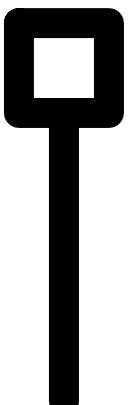
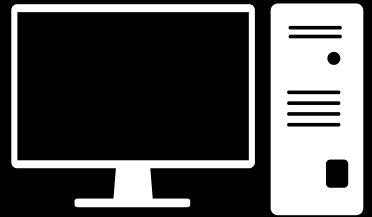
SCAN & TRANSFER

Effortlessly transfer printed text to your computer or mobile device for convenient reading, anytime, anywhere!



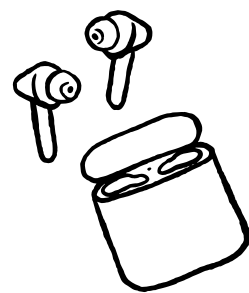
PRINT OR DIGITAL

Have the ability to scan both printed and digital text. The Text 2 will be able to convert both in to audio and read it out aloud.



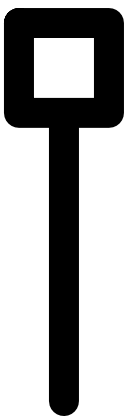
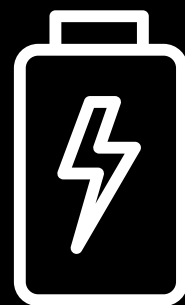
BLUETOOTH

You have three options to listen to the text reader: through Bluetooth earbuds, the built-in speaker, or by connecting an external speaker.



BATTERY

After being fully charged, the battery is expected to provide 8 hours of continuous usage.



WIFI

while connect to WIFI, access 112 languages to convert text to speech OR speech to text.

