

MY
ITENA
CHOICE
#temporary
cementation

PROVITEMP

TEMPORARY CEMENT

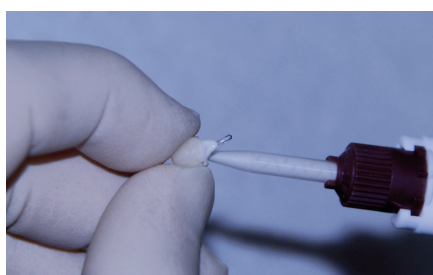
Short term temporary cement



Temporary cement for crowns and bridges, inlays and onlays and temporary trials of permanent restorations

- **Easy to use**
- **Eugenol free**, which does not interfere with the permanent cements and adhesives
- **Resistant to deformation** caused by chewing
- **Perfectly watertight** cementation
- **Dentine shade** for a perfect aesthetic result
- **Contains fluorides**
- Radiopaque
- Easy excess removal, no residues
- **Easy clean-up** of the temporary prosthesis after removal

PROTOCOL



1 Inject PROVITEMP into the temporary restoration, the working time is between 1min30 and 3min30



2 Set the restoration and hold firmly in place. Initial gel setting occurs between 1min30 to 2min



3 Remove the excess.
Final setting: 3min to 4min

References

PROVITEMP Automix syringe	PTEMP1-10
5ml syringe + 10 mixing tips	
PROVITEMP mixing tips	DTEM-20
20 mixing tips for Automix syringe	

Find us on www.itena-clinical.com

ITENA[®]
CLINICAL PRODUCTS

Class IIa medical device marked CE 0425. For use by dental professionals only. Read carefully the instructions in the leaflet before use.
ITENA CLINICAL, Central Parc, Bat B, 97 Allée de la Louve, 93420 Villepinte - FRANCE - Tel: + 33 1 45 91 61 40 - IND OR - 05/2022