



MTA BIOREP

**ENSURE YOUR
ENDODONTIC
REPAIRS**

ITENA[®]
CLINICAL PRODUCTS

MTA BIOREP

Two mixing methods, **same exceptional quality**

Automatic Mixing



THE CORRECT DOSE
IN EACH CAPSULE



HOMOGENEOUS MIXTURE,
EASY TO USE:

ONLY 4 DROPS REQUIRED

Hand mixing



Perfect lesion repair to guarantee successful fillings

Mission accomplished by the ITENA laboratories with MTA BIOREP: optimize MTA's intrinsic qualities to revolutionize its performance, creating **an exclusive bioceramic cement mixture with excellent results in root canal repair.**

With MTA BIOREP, we guarantee **perfect tissue restoration, an essential part of ensuring quality fillings.**



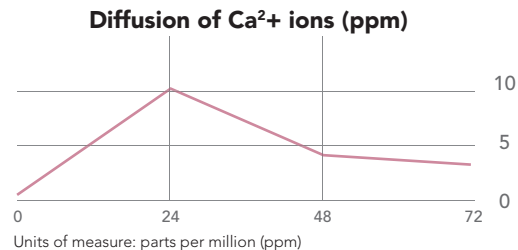
Repair objective

MTA BIOREP **has the highest calcium ion release rate on the market** which ensures optimal remineralization, as well as excellent cementum and bone tissue restoration.

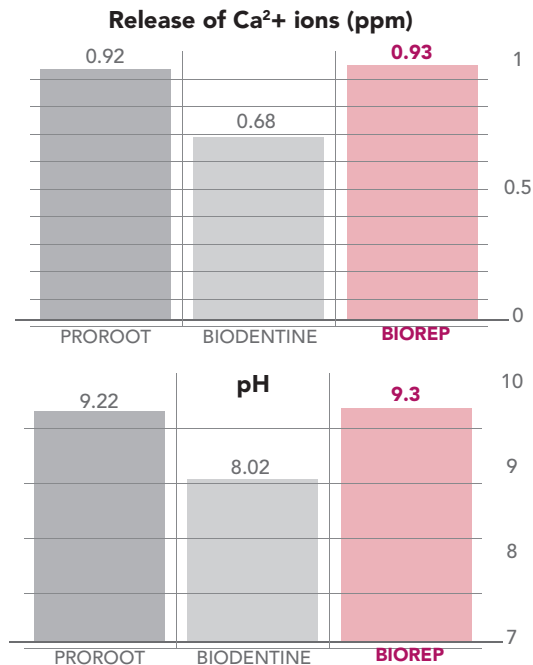
The diffusion of calcium ions reaches its peak in the first 24 hours, for immediate and prolonged action.

Protection objective

Following the hydration, the release of hydroxide ions leads to an increase in the pH of MTA BIOREP, which has one of the most alkaline pH values. The bacteriostatic effect thus created causes a **decrease in the proliferation of bacteria** responsible for the failure of most endodontic treatments.



The diffusion of calcium ions reaches its peak in the first 24 hours, for immediate and prolonged action.

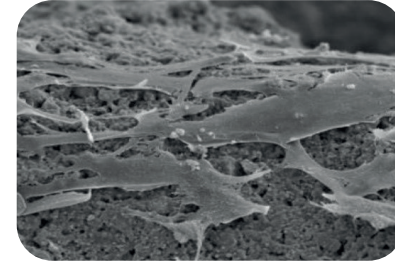
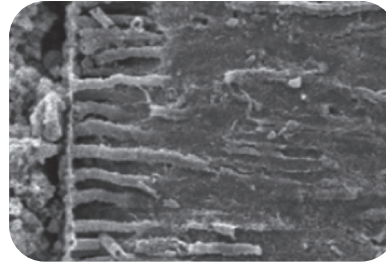


BIOCOMPATIBLE

**MADE WITH
CALCIUM TUNGSTATE**

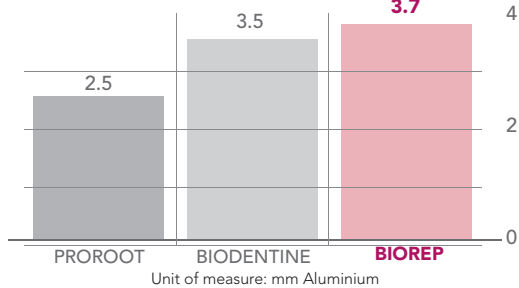
DOES NOT DISCOLOUR TEETH

HIGH RADIO-OPACITY



After the ions react with the tissues, the formation of a precipitate comparable to hydroxyapatite creates an **hermetic barrier with dentine** that favours **tissue regeneration and remineralization**.

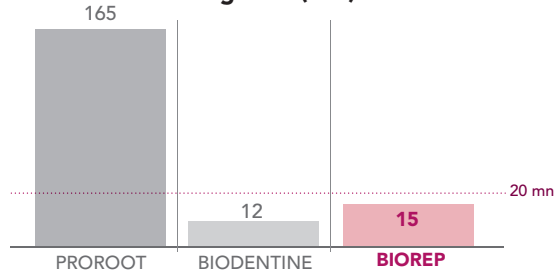
Radio-opacity (mm Al)



ADVANTAGES FOR YOUR DAILY PRACTICE...

- Easy to manipulate and insert in the root canals
- Excellent adhesion to dentine
- Optimizes the bone regeneration process in cases of root perforation.

Setting time (min)



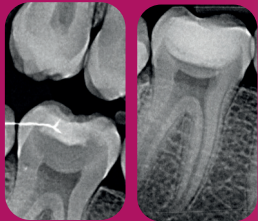
... AND FOR YOUR FILLINGS

- Rapid tissue repair
- Prolonged action
- Resistant to infiltrations
- Bacteriostatic action

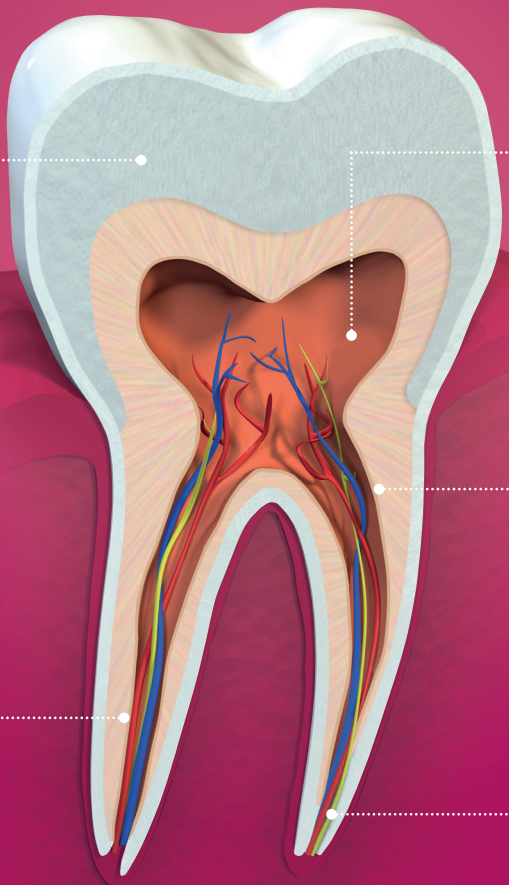
 **SAVES TIME:
SETS IN
15 MINUTES**

Proven efficacy over the long term

Pulp capping on permanent teeth



Initial case Post-op



Pulpotomy



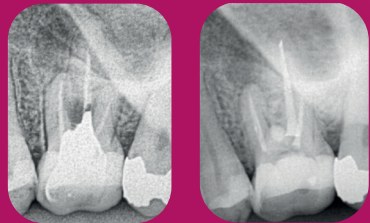
Initial case After 12 months

Internal resorption



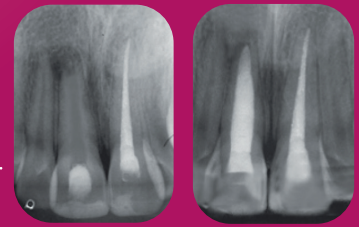
Initial case After 3 years

Root canal perforation



Initial case After 4 months

Apexification



Initial case After 18 months



MTA BIOREP



ITENA[®]
CLINICAL PRODUCTS

Available in boxes of 2 or 5 capsules.

www.itena-clinical.com

Class IIb medical device marked CE 0425. Reserved for dental professionals. Read instructions for use carefully before use.
ITENA Clinical 31 avenue Georges Clemenceau, 93420 Villepinte - FRANCE - Tel: + 33 1 45 91 61 40 - IND 1 - 04/2021