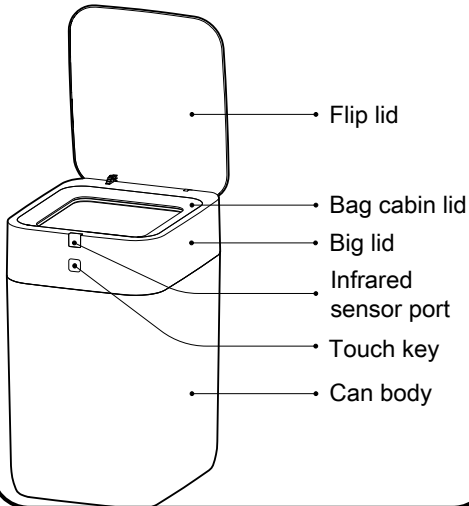


Airdeer Automatic Trash Can

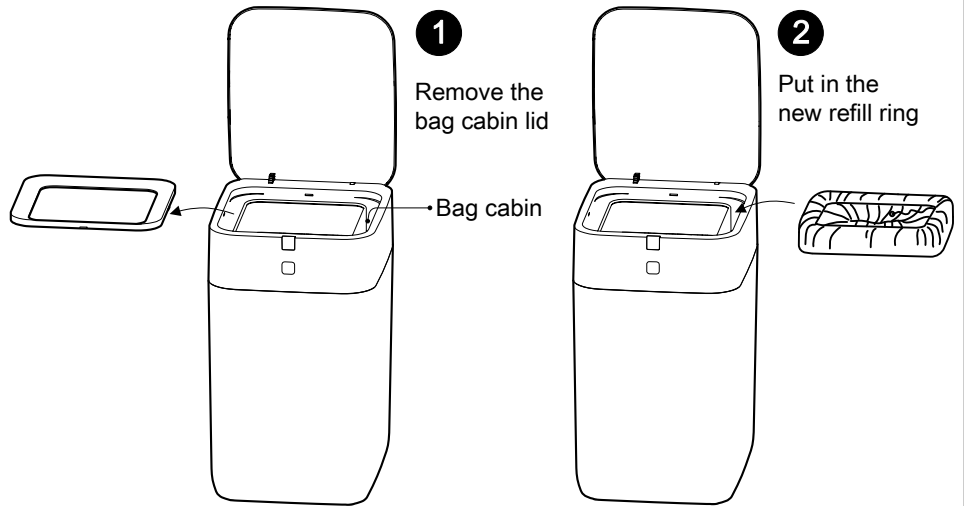
Quick Start Guide

Parts names and locations



Install the refill ring

Method A. Leave the power on, or Method B. Turn off the power



3 Compress the Refill ring all around

4 Put on the bag cabin lid

5 Pull the stitching thread all out

A. Long press the touch key or B. Turn on the power, to complete auto bag loading

6

A

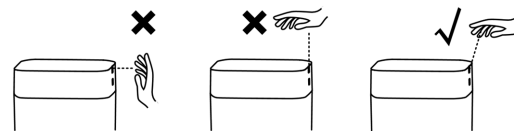
B

Touch key

Self-sealing and bag-changing

Touch key

Long press the touch key, the trash can will make a "di-di-di-" sound, until you hear the voice prompt "Start packing", then follow the voice prompt.



Open the flip lid

Methods to open the flip lid: One is to take the garbage into the sensing area, the other is to bend the knee slightly and enter the sensing area

