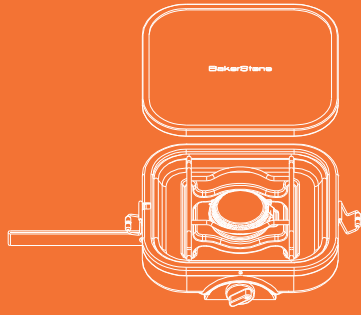


# Cooking Stove Product Guide

Model # BCB-1B-AH



CAMP BUDDY

\* This product guide covers multiple variations of this product. Please see page 4 for what is included in your purchase.

Failure to follow these instructions could result in fire or explosion, which could cause property damage, personal injury, or death.

## SAFETY PRECAUTIONS – READ BEFORE USING THE APPLIANCE

Do not store or use gasoline or other flammable vapors and liquids in the vicinity of this or any other appliance.

This appliance can produce carbon monoxide which has no odor.

Using it in an enclosed space can kill you.

Never use this appliance in an enclosed space such as a camper, caravan, tent, car, mobile home, marine craft, or home.

### ⚠️ WARNING

Do not modify this appliance. This may be hazardous and will void the warranty.

Burn Hazard - Stove Parts may become very hot.

Burn Hazard - Keep away from children.

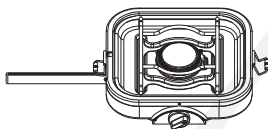
Do not leave stove unattended while in use. Hazardous conditions may occur.

#### FOR YOUR SAFETY

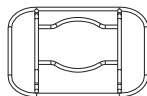
Do not store or use gasoline or other flammable vapors and liquids in the vicinity of this or any other appliance.

## WHAT'S IN THE PACKAGE

Before assembly, ensure that all parts below are included. Please note part numbers are not listed in numerical order.



A – Cooking stove



B – Cooking grate



C - Inlet gas regulator and pipe



D – Wood tray

Have a question? Please Do Not Return This Product To The Store. Contact us first! 1-855-657-6836 or email [support@bakerstonebox.com](mailto:support@bakerstonebox.com)

5. Do not use this product in strong or hot winds, as strong winds can extinguish flames and hot winds can increase the gas pressure in the gas tank, causing an explosion.

6. It is prohibited to use large cooking utensils that can cover the entire size of the stove. Use a pot with a bottom diameter of less than 20 centimeters and a weight not exceeding 8kg (including the weight of food and liquid to be heated).

7. This product is not intended for commercial purposes.

8. Do not use for purposes other than cooking.

9. Gas cylinders and gas types that must be linked together must be used. It is strictly prohibited to modify the gas pipe connector without authorization. Unreliable connections may cause accidents such as gas leakage or fire.

10. Do not use of containers containing stones, sand, ceramic materials, and other highly radioactive materials.

11. After use, the gas tank should be removed and stored separately from the stove.

12. It is prohibited to dismantle or modify the picnic stove without permission, as it may damage the product or cause a fire.

## ASSEMBLY OF THE COOKING STOVE

1. Remove packed contents from bag

2. Place latched stove on a flat, level surface, at least 1m/3.3ft away from any combustible materials or ignition sources.

## Important, Retain for Future Reference: Read Carefully

### WARNING

This product guide contains important information necessary for the proper assembly and safe use of the appliance.

Read and follow all warnings and instructions before assembling and using the appliance.

Read and follow all warnings and instructions when using the appliance.

Follow all leak-check procedures in the Product Guide before using the appliance.

This appliance is for outdoor use only.

### FIRE OR EXPLOSION HAZARD

#### If you smell gas:

1. Do not attempt to light appliance.
2. Make sure appliance is in the off position.
3. Extinguish any nearby flame(s).
4. Shut off cylinder fuel supply valve if so equipped, or if equipped with a disposable fuel cylinder, disconnect cylinder.
5. Leave the area immediately.
6. Allow gas to dissipate 5 minutes.
7. If gas smell has dissipated from the area, of the appliance, and fuel supply, follow gas connection procedures.
8. If you smell gas again, follow steps 1–6 and have appliance serviced.

### ⚠️ DANGER



### CARBON MONOXIDE HAZARD

This appliance can produce carbon monoxide which is poisonous and has no odor.

Using it in an enclosed space can kill you.

Never use this appliance in an enclosed space such as a camper, tent, car or home.

At least a warning to the following effect shall also appear on the cover or first page of the owner's manual.

### ⚠️ WARNING

Improper installation, use, adjustment, alteration, service, or maintenance can cause injury or property damage. Refer to this manual. For assistance or additional information consult a qualified installer, service agency or gas supplier.

## TABLE OF CONTENTS

## PAGE

What's in the package .....	4
Assembly of the Cooking Stove .....	6-10
OPERATING INSTRUCTIONS .....	10-11
STORAGE AND MAINTENANCE .....	11-12
TROUBLESHOOTING .....	12-15
Customer Service & Warranty .....	15

## SPECIFICATIONS

### Gas Category:

Propane under vapor pressure. This appliance should only be used with 16.4 oz disposable propane cylinders (sold separately). It may be hazardous to attempt to fit other types of gas canisters.

The LP-gas cylinder(s) used with this stove must be constructed and marked in accordance with the specifications for LP-gas cylinders of the U.S. Department of Transportation or Transport Canada, CAN/GSA B339.

### Input Rating:

8,000 BTU/hr

### ⚠️ WARNING

1. This product is only suitable for outdoor use and is strictly prohibited from being used in narrow spaces such as tents or cars. During the combustion process, a large amount of oxygen is consumed, which may lead to accidents such as suffocation or carbon monoxide poisoning due to lack of oxygen.

2. This product is suitable for use in ambient temperatures ranging from 32°F-104°F (0 C-40 C).

3. Do not use this product in flammable and explosive environments.

4. Do not use this product near other heat sources (such as induction cookers).

3. Unlock the latches, take away the wood tray, put the cooking grate on the stove, make sure the cooking utensils must face upwards as Fig. 2.

4. Ensure the control valve (2.2) are closed firmly (rotate clockwise).

5. Check that Gasket (3.1) at Fuel Input connection (3.2) is in place and in good condition before connecting to the Regulator.

### ⚠️ WARNING

Do not use the appliance if it has damaged or worn seals; this may result in gas leakage.

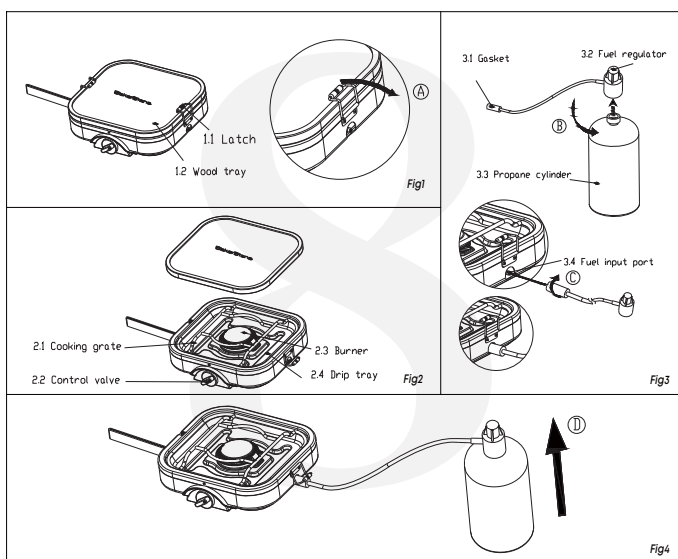
6. To check that the gas canister is not empty, liquid fuel may be heard and/or felt inside when the canister is shaken.

7. Connect gasket (3.1) to the fuel Input port (3.4) located in the right side of the stove by threading Coupling clockwise.

8. Connect Propane Cylinder (3.3) (sold separately) into gas regulator (3.2) by threading clockwise in the orientation shown in Fig. 3.

### ⚠️ WARNING

Do not install or use Fuel Cylinder in an inverted position.



### Leak check procedure

1. Perform Leak Checks outside, in a well-ventilated area.
2. Connect gasket (3.1) to the fuel input port (3.4) located in the right side of the stove by threading Coupling clockwise.
3. Connect Propane Cylinder (3.3) (sold separately) into Fuel regulator (3.2) by threading clockwise in the orientation shown in Fig. 3.
4. Put soapy water on the gas connections between Propane Cylinder and the Regulator as well as the Regulator and the Fuel Input Port. Formation of bubbles indicate a gas leakage.

### ⚠ WARNING

Do not check for leaks using a flame.

If a leak is detected, do not attempt ignition. Vapors can ignite and cause serious injury. Remove fuel source immediately and contact Customer Service.

5. If no leak is found, detach gas source. Leak check is complete.

### ⚠ WARNING

Perform leak checks outside, in a well-ventilated area.

Operate at least 1m/3.3ft away from combustible materials and ignition sources.

Before each use: Keep stove area clear and free from combustible materials, gasoline, and other flammable vapors and liquids.

Do not obstruct the flow of combustion and ventilation air to the stove.

Do not use windscreen other than the one provided with this product; use of another windscreen or outback oven can overheat the fuel canister, resulting in explosion.

Do not use an appliance which is leaking, damaged or which does not operate properly.

Always change gas canisters in a well ventilated location away from any sources of ignition, such as naked flames, pilot, electric heaters/equipment and away from other people.

Do not install or use Fuel Cylinder in an inverted position (Reference Fig. 4).

### OPERATING INSTRUCTIONS

#### ⚠ WARNING

Keep burner at arm's length, away from face, during ignition. Flame can erupt and flare during ignition.

Do not attempt to light with included pot or any other cookware on the burner. Gas build-up can occur, resulting in increased flame eruption.

Never expose stove to flammable vapors or liquids while lighting the burner. It can cause an explosion or fire.

Do not move, lift, or tilt stove with lit burner(s). Product damage or injury can occur due to flaring.

Always check that the burners are extinguished before disconnecting the fuel source. Vapors can ignite and cause serious injury.

#### LIGHTING THE BURNERS:

#### ⚠ CAUTIONS

Ensure Cooking Grate are free of any cookware prior to lighting. Gas build-up can occur, resulting in increased flame eruption.

1. Turn either control valve (2.2) counterclockwise. Repeat as necessary.

2. If ignition does not occur within 5 seconds, close control valves (2.2) and wait 5 minutes before repeating the procedure.

#### Cookings:

1. Rotate control valve (2.2) of the lit burner clockwise to decrease flame setting.
2. Ensure cookware is centered on the cooking grate.

#### After use:

Turn off open control valves (2.2) (tighten clockwise) to extinguish flame to each burner.

#### ⚠ WARNING

Always check that the burners are extinguished before disconnecting the fuel source. Vapors can ignite and cause serious injury.

Disconnect Gas Cylinder after EVERY use.

#### Packing:

1. Allow stove to fully cool before packing.
2. Overturn the cooking grate, put the wood tray on the stove, lock the Latches (1.1) to secure.

### STORAGE AND MAINTENANCE

#### Storing after use:

Allow stove to cool before storing.

Always disconnect fuel cylinders before storing the stove.

Ensure stove is clean and dry before storing.

Store the stove in a cool, dry location, indoors.

To avoid dust and cobweb buildup, which can effect stove performance, store the stove in a sealed bag or container.

#### ⚠ NOTICE

#### Maintenance:

##### 1. Flame Check (Every use):

The height of the flame should increase from low to high with counter-clockwise rotation of the control knobs. Flame should be blue with minimal yellow tipping. If flame abnormalities are found, refer to Troubleshooting Section.

#### Maintenance:

##### 2. Cleaning Grate (Before storage, or as needed):

Do not use a dishwasher or abrasive compounds to clean.

Only wash by hand with soapy water.

##### 3. Wood tray (Every use):

Wash and dry the wood tray immediately after each use.

To season, put about ½ cup of food-grade mineral oil in a saucepan, and warm it on the stove.

Use lemon juice or baking soda if your board develops any weird stains or smells.

### TROUBLESHOOTING

#### 1. Flame does not extinguish:

#### When you open the package:

Consult the Product Guide to ensure that there are no missing or damaged parts. Within 14 calendar days from the date of purchase, any missing parts or damages must be reported to BakerStone. NOTE: Slight chips or scratches in the stones are not considered damages and do not affect the performance of the appliance.

Claims for defects or missing items must be accompanied by the original or an acceptable copy of the sales receipt and photographs must be taken to support any and all claims submitted.

#### Here is what the warranty does not include:

Merchandise that has sustained weather damage.

Any damage to the appliance resulting from being used in a manner other than its intended purpose. acceptable copy of the sales receipt and photographs must be taken to support any and all claims submitted.

Damages resulting from use in a commercial or institutional organization.

Failures, defects, damages caused by, failure to follow the instructions, abuse, neglect, inclement weather and/or acts of nature.

Reasonable wear and tear of enameled finishes.

Discoloration or yellowing of any stainless steel components.

Damage caused by bleach, ammonia, and/or other abrasive cleaners.

Rusting as a result of scratches or broken enameled surfaces.

Failure, discoloration or any and all damages that result from the appliance being used with disregard to any and all warnings listed in the Product Guide

Tighten control valve as much as possible. Manually blow out flame. Once flame is extinguished, immediately detach fuel source. See your dealer or contact Bakerstone for service.

#### 2. Igniter fails to spark:

If stove is wet, igniter may fail to spark. If igniter still fails to spark, use matches or a lighter, following instructions detailed in OPERATING INSTRUCTIONS – Lighting the Burners. See your dealer or contact Bakerstone for service if igniter fails to spark for any other reason.

#### 3. Continued Issues:

If an issue cannot be corrected using these instructions, see Limited Warranty on back cover. Contact your local dealer, distributor, or Bakerstone for parts and/or service.

### CUSTOMER SERVICE

For general inquiries, please email us at support@bakerstonebox.com or call (855) 657-6836.

For North American customer service needs, such as obtaining replacement parts and warranty claims, please email us at support@bakerstonebox.com or call (855) 657-6836.

For North American customer service needs, such as obtaining replacement parts and warranty claims, please email us at support@bakerstonebox.com or call (855) 657-6836.

### WARRANTY

#### Please read carefully:

This appliance is covered by/under a limited warranty for manufacturing defects for a period of 12 months from the date of purchase. This warranty applies only to the original purchaser using this product in a residential and non-commercial setting. This warranty applies only to items sold in original packaging, at the authorized retail location, and does not relate to items sold that have been opened, used as floor samples or demonstration, or models sold "as is".

Damages caused to the appliance by dirty, grease laden firebox or burners that are clogged, corroded or otherwise damaged and therefore are likely to misfire or otherwise malfunction.

Damages caused by neglect or lack of reasonable care and maintenance.

Damages resulting from the use of the appliance when it has not been properly maintained. A properly maintained appliance includes, but is not limited to, clean grease trap and firebox, and properly functioning burners, valves and regulator.

Consequential damages.

Any damages to an item resulting from placing it on a hot appliance.

Damage to any item resulting from attempting to use the appliance indoors.

#### DISCLAIMER

USE OF THIS APPLIANCE IS AT THE DISCRETION OF THE USER. BAKERSTONE IS NOT RESPONSIBLE FOR PERSONAL INJURY OR PROPERTY DAMAGE RESULTING FROM THE MISUSE OF THIS APPLIANCE.

FAILURE TO NOT FOLLOW THE PRECAUTIONS AND INSTRUCTIONS IN THE PRODUCT GUIDE MAY RESULT IN THE VOIDING OF THE WARRANTY OF THIS APPLIANCE.

THE COOKING STOVE IS FOR OUTDOOR USE ONLY.

Customer service claims

Please call: 1-855-657-6836

Email: support@bakerstonebox.com

Visit: www.bakerstonebox.com