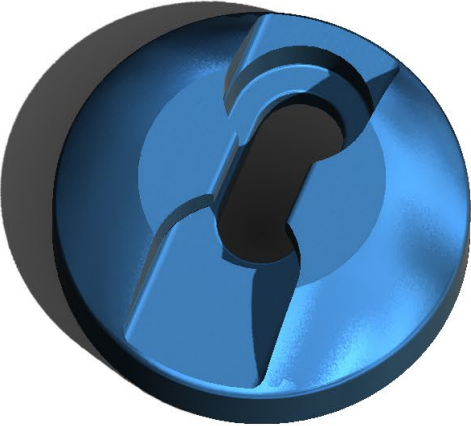


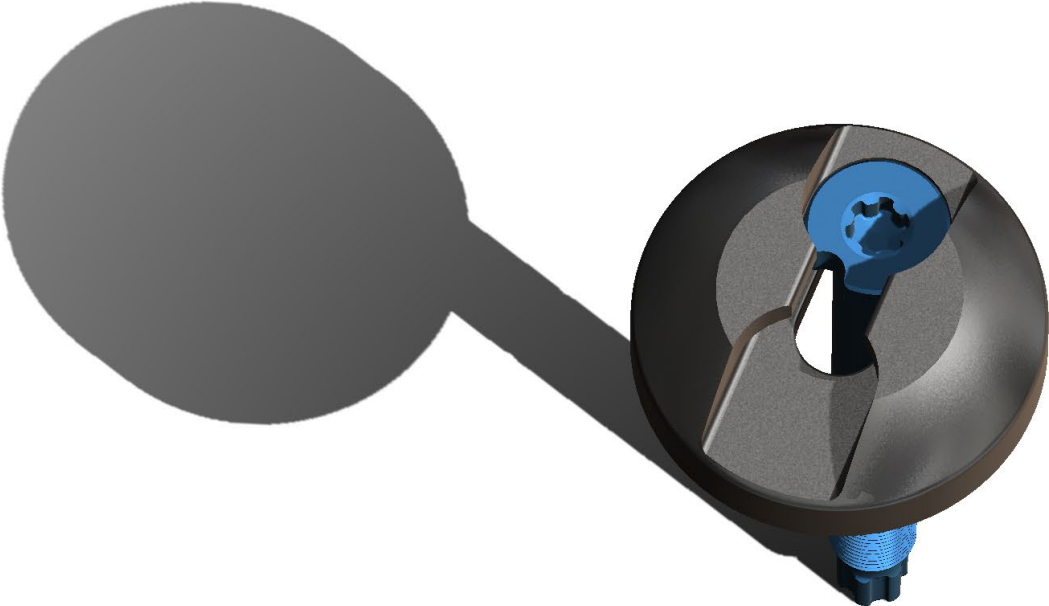
# VersaTrax – OneTrax Bed Anchor Install Instructions



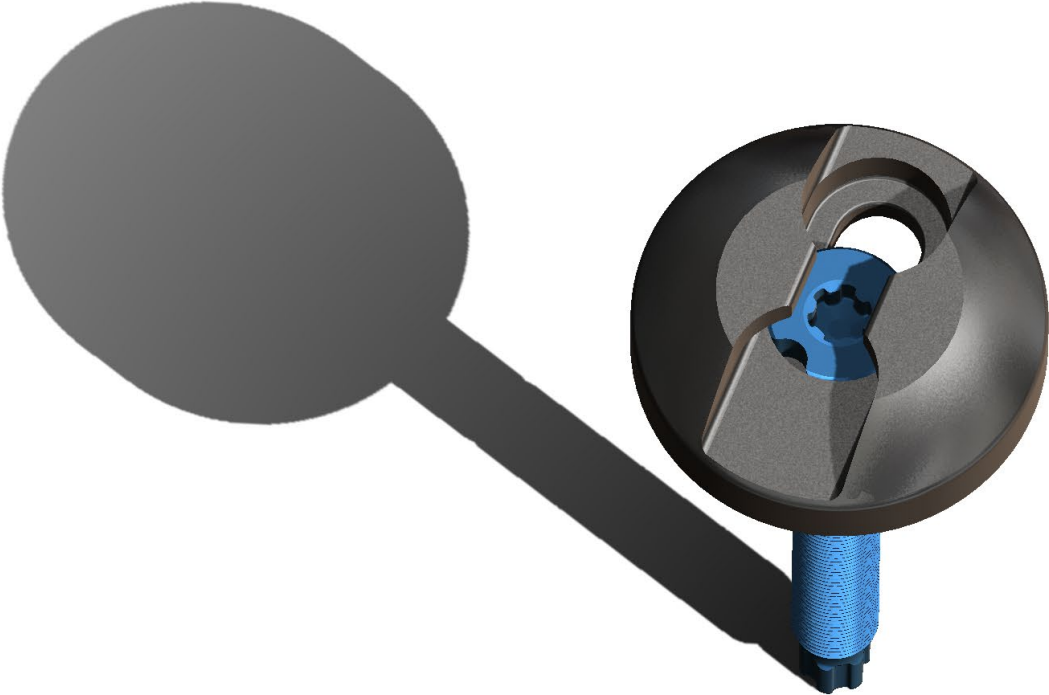
**Step 1:** Remove factory bed bolt from vehicle and prepare OneTrax base to be installed.



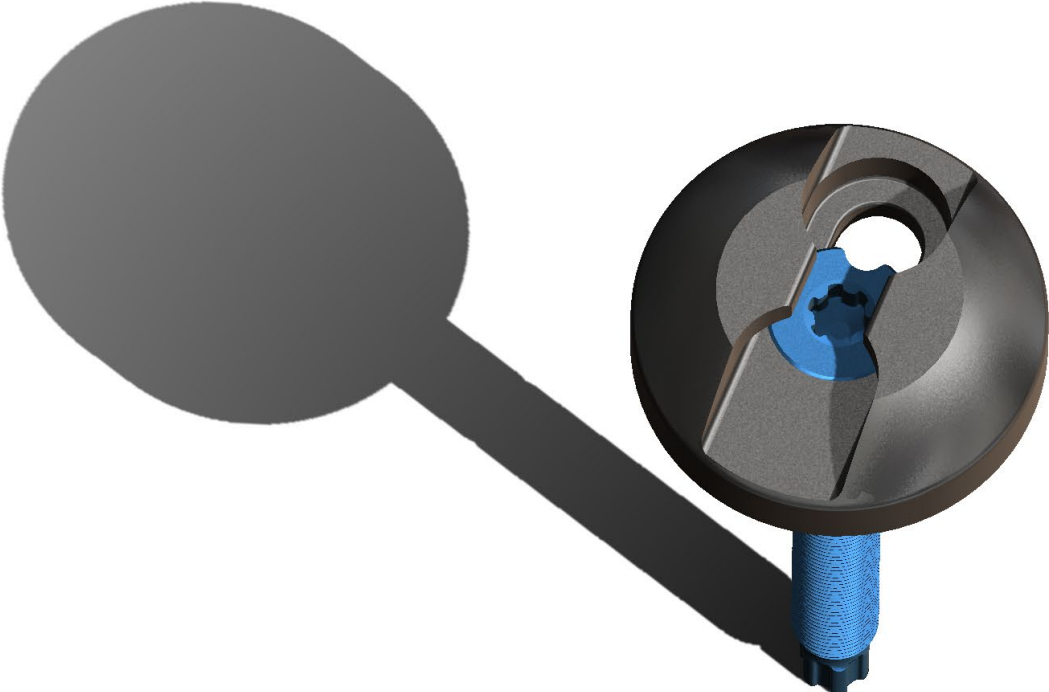
Step 2: Position the bolt in the slot.



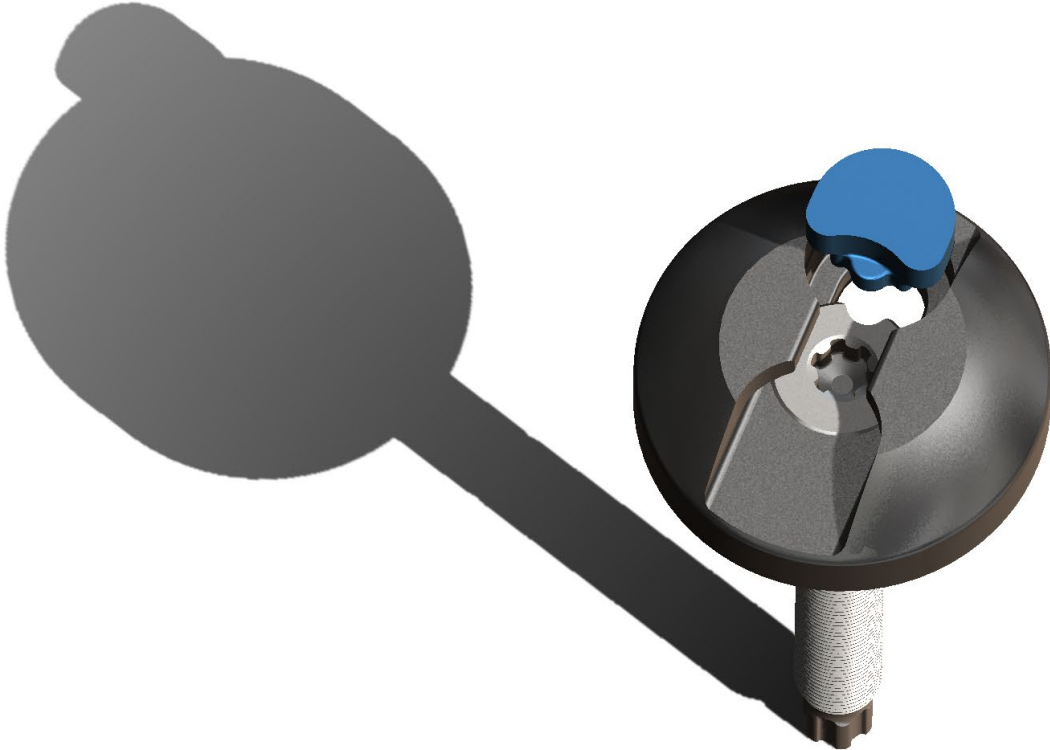
**Step 3:** Slide Bolt to the center of the OneTrax base.



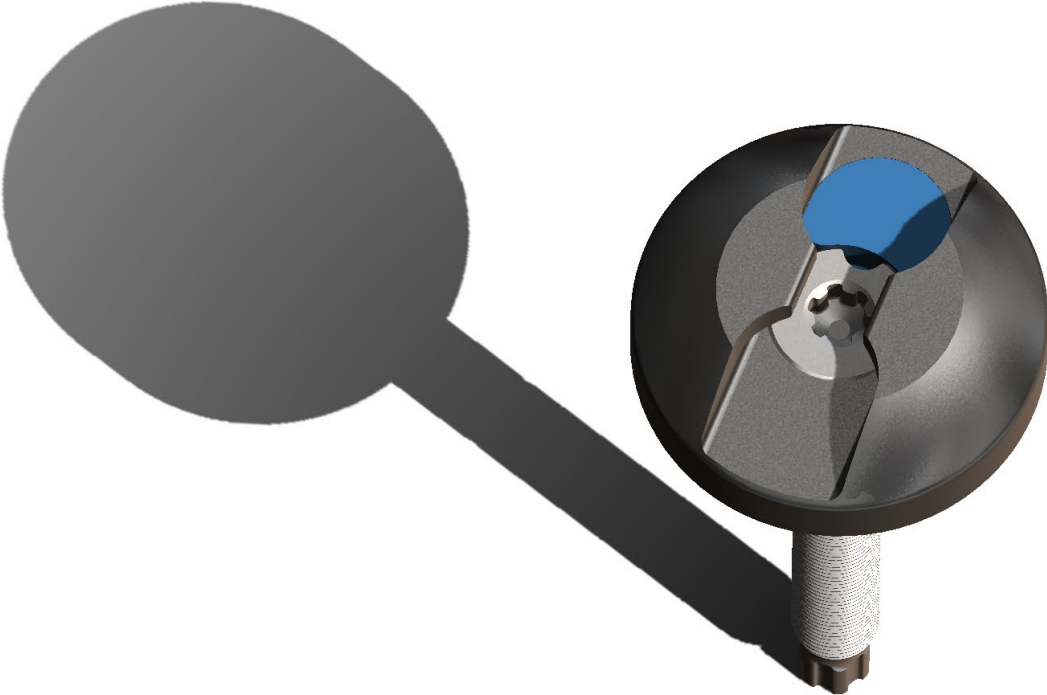
**Step 4:** Rotate the bolt to allow the flange cutout to be faced towards the opening of the slot.



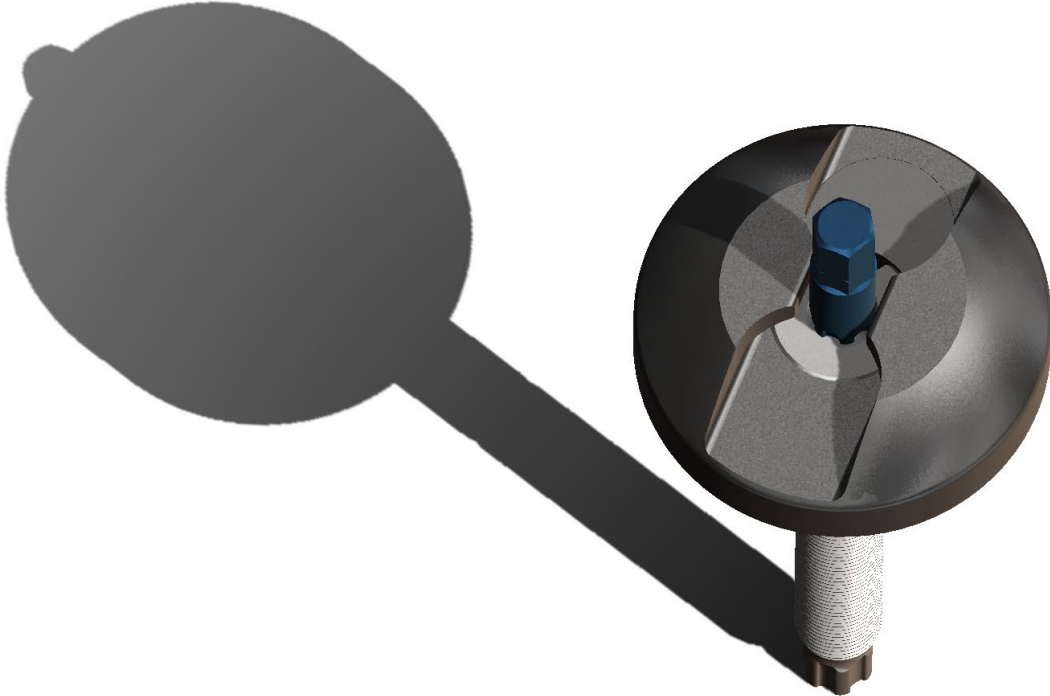
Step 5a: Insert the filler piece as shown.



Step 5b: Insert the filler piece as shown.

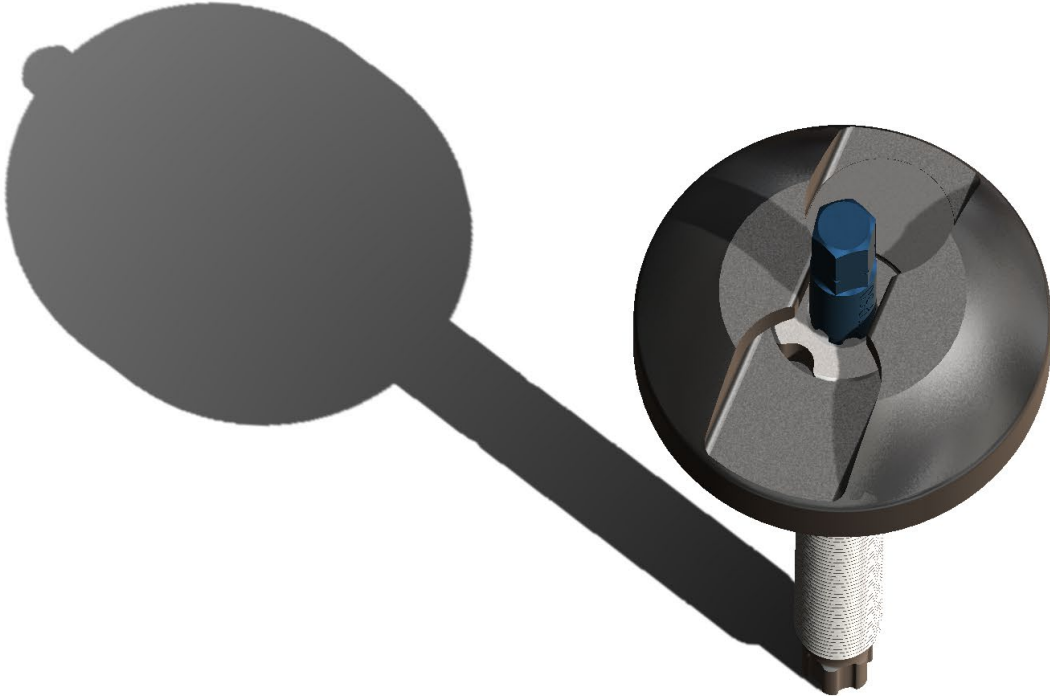


Step 6: Insert TP-50 (Torx Plus 50) drive.





**Step 7:** Torque OneTrax assembly to 55 ft/lb.  
Filler piece will lock into place.



**Step 8:** Connect/disconnect single stud L-series fitting as needed.

