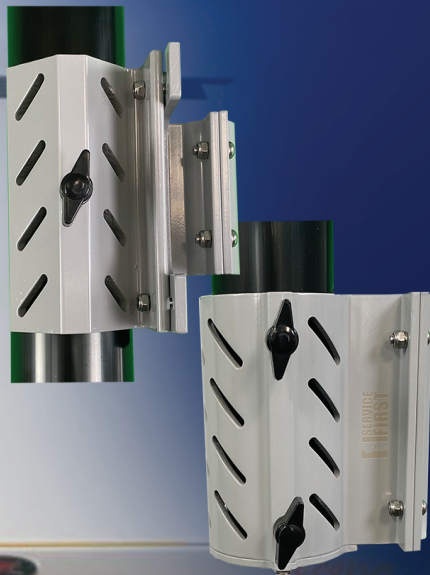


RV LADDER MOUNT

**SERVICE
FIRST**

- ★ **UNIVERSAL ALUMINUM FLAGPOLE LADDER MOUNT**
- ★ **FITS FLAGPOLES UP TO 3" IN DIAMETER**
- ★ **HEAVY DUTY ADJUSTABLE CONSTRUCTION**
- ★ **ALLOWS EASY ON THE GO USE**



Installation of your Service First Flagpole RV Ladder Mount

1. Install 3M coated tape on (Part B) Top bracket. Cut to length and place on both sides of the Top bracket that will be in contact with the flagpole.



3M coated tape



Part B Top bracket



Part A Bottom bracket

2. Installed Part A, Bottom Bracket to your RV ladder. Make sure all screws are tightened properly and securely.
3. Installed Part B, Top Bracket to your RV ladder. Make sure all screws are tightened properly and securely.
4. Place your flagpole into the Ladder Mounts by first inserting the flagpole into the Bottom bracket (Part A) and then position the top of the pole into the Top bracket (part B). Use hand screws to secure the flagpole in the mounts. Verify all mount screws and hand screws are securely tight.

