



**LeonLite** | LITE<sup>edge</sup>

## **100W Smart Super Bright Area Light**

Quick Start Guide  
Guide de démarrage rapide  
Guía de inicio rápido

**\*HUB REQUIRED**

## DOWNLOAD LITEEDGE APP



### NOTE // Allow Access to Bluetooth



#### BLUETOOTH CONNECTIVITY IS REQUIRED

Please **ALLOW** LITEEdge app to use the Bluetooth. This will allow LITEEdge app to find and connect to certain smart light.

## PRODUCT FEATURES



BLUETOOTH



COLOR  
CHANGING



ADJUSTABLE  
COLOR TEMP



HUB REQUIRED  
FOR CONTROL VIA INTERNET



100-277V  
ONLY



IP65  
WATERPROOF



0-12 CHILDREN  
WARNING



ELECTRICIAN  
REQUIRED

### WARNING & DISCLAIMER

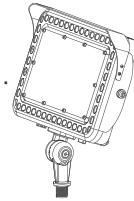
Proper setup of this device requires blinking lights. Please take precautions during the activation process, and avoid direct eye contact with or placing a cover over the light until successful pairing is complete to prevent potential discomfort or photosensitive seizure.

## SINGLE LIGHT PAIRING AND CONNECTION

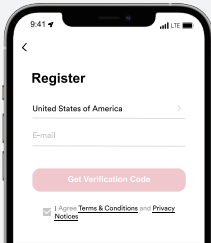


Connection distance:  
Max. 50 ft (without block)

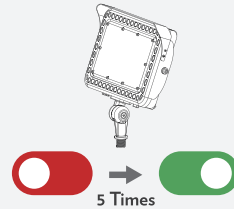
Pairing distance:  
as close as possible



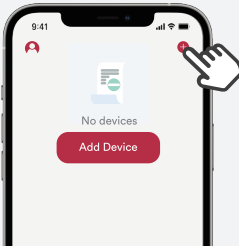
1 Register and login.



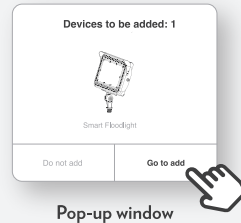
2 To set the light to pairing mode, simply turn it OFF-ON five times and watch as it begins blinking.



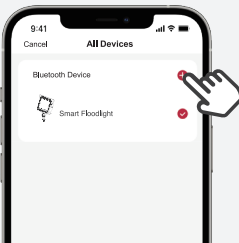
3 Press "+" while the light is still in pairing mode (blinking).



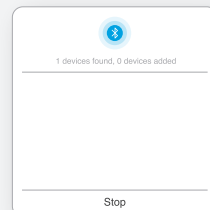
4 Press "Go to add" button.



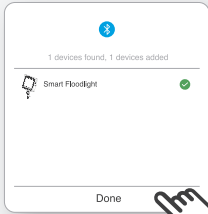
5 Select the light and press "+".



6 Connecting...

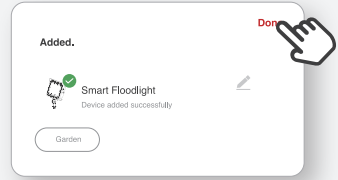


7 Press "Done" button.

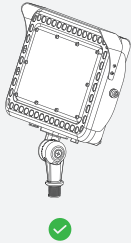


Pop-up window

8 Successfully added.



✓ Success.



## MULTIPLE LIGHTS PAIRING AND CONNECTION

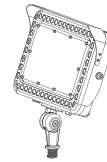


Connection distance:  
Max. 50 ft (without block)

Pairing distance:  
as close as possible

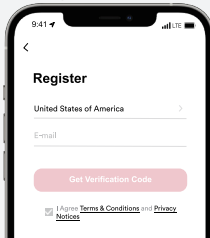


Max. 26 ft  
(without block)

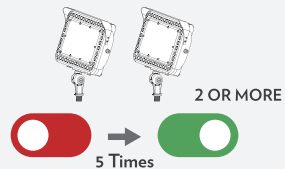


2 OR MORE

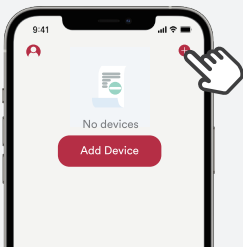
1 Register and login.



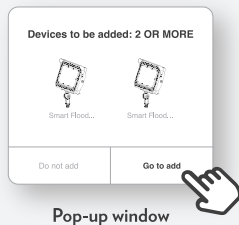
2 To set the lights to pairing mode, simply turn them OFF-ON five times and watch as they begin blinking.



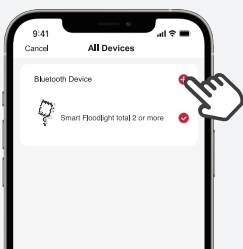
- 3 Press “+” while the lights are still in pairing mode (blinking).



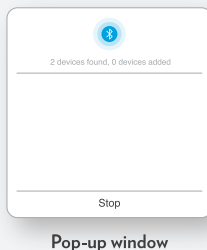
- 4 Press “Go to add” button.



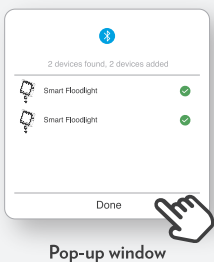
- 5 Select the lights and press “+”.



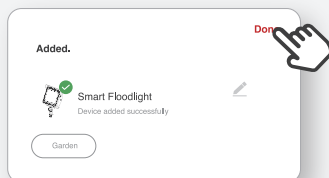
- 6 Connecting...



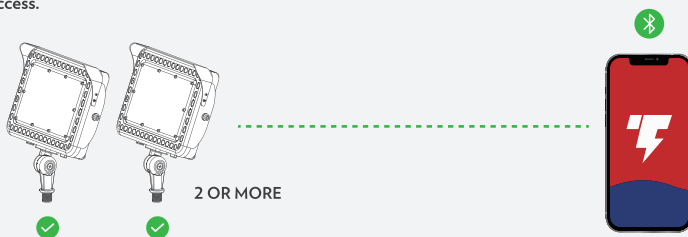
- 7 Press “Done” button.



- 8 Successfully added.



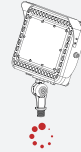
- ✓ Success.



- ✘ Some lights fail to connect due to time-out when connecting multiple lights.

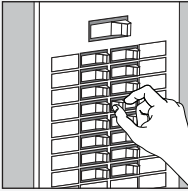


CONNECTED

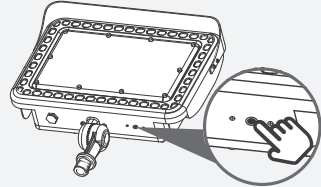


TIME-OUT  
STEADY ON WHITE

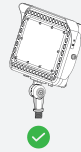
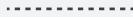
- 1 To reset the time-out light(s), toggle the light(s) OFF and then ON again or long press the button on the light once.



OR



- ✔ Now pair the remaining lights with LITEdge App and further illuminate your space!



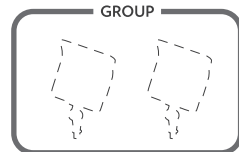
CONNECTED



TIME-OUT  
STEADY ON WHITE



INDIVIDUALS

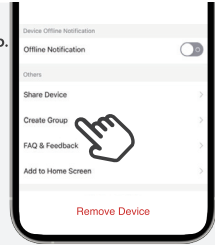


GROUP

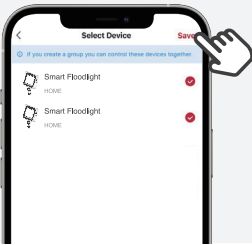
1 Tap "∟".



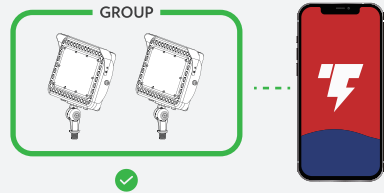
2 Create a group.



3 Select the lights that you'd like to add to the group.



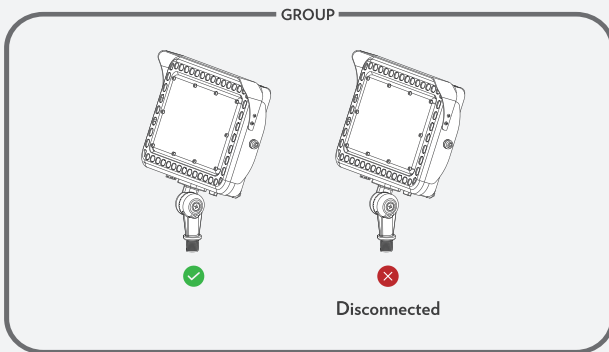
4 Success.



## TROUBLESHOOTING

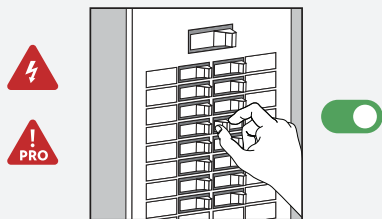
### One of All Lights Lost the Connection

- ✘ If one of the lights in your group is disconnected, there are steps you can take to easily re-establish connection.

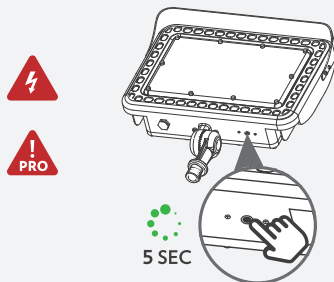


**Method 1:** Reset and pair the disconnected light individually.

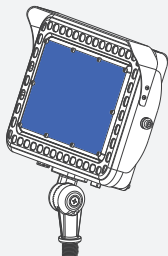
1 Turn on the light system.



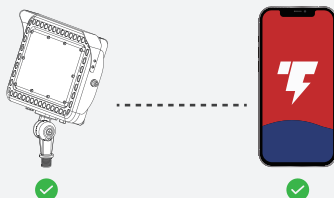
2 Press and hold the button for 5 seconds until the light begins to blink.



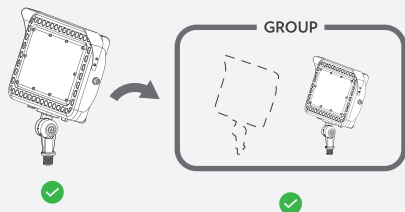
3 Once the light is blinking blue, proceed to the next step.



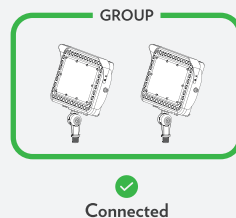
4 Start the pairing process when the light begins to blink.



5 Add the light back to the existing group.



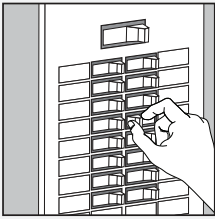
✓ Success.



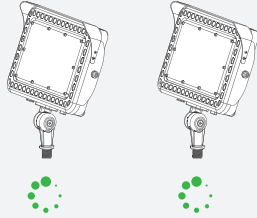


**Method 2:** Reset and pair the whole system.

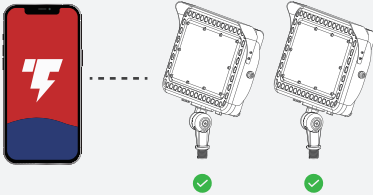
1 Reset by main switch.



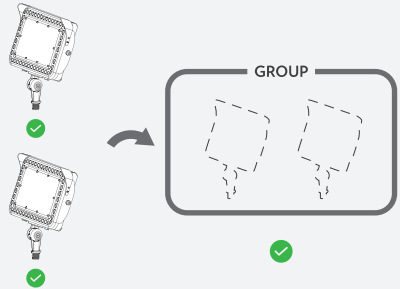
2 Reset all lights (ON-OFF x 5, then ON)



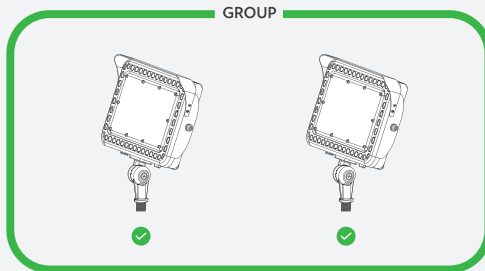
3 Pair all lights.



4 Create a group/Add to a group (If necessary).



✓ Success.



## 01 / FREQUENTLY ASKED QUESTIONS

### 1. How can I share my devices with other users?

To share your LITEdge smart devices, follow these steps:

- (1) Open the LITEdge App and tap the "Me" icon at the bottom right corner.
- (2) Select "Home Setting" and choose the home you want to share.
- (3) Select "Add Member" and add other users by entering their LITEdge account details or sending an invitation by text message or email.

NOTE: The maximum range of the Bluetooth connection is 50ft.

### 2. How can I group multiple devices together?

- (1) If you are using the Alexa or Google Home App, follow their "Add to home" process to link your LITEdge smart devices to your smart speaker and create a room to group them. NOTE: This light requires a smart hub to work with a smart speaker.
- (2) If you are using the LITEdge App, tap the device icon, select "Create Group," and add your preferred devices to a group to control them all together.

### 3. How many devices can I control?

Our App can control an unlimited number of devices, but make sure at least one of these lights is within Bluetooth connection range, which has a maximum range of 50ft, and the maximum distance between two lights is 26ft.

### 4. How can I rename my device?

To rename your device, tap the device from your main device list, select the "pencil" icon beside the default device name, and enter a new name.

### 5. What should I do if the device is offline or disconnected?

If a device is offline or disconnected, try unpairing and pairing the device again first, making sure that Bluetooth access is allowed and at least one of these devices is within Bluetooth connection range. If that doesn't work, feel free to call us at +1 800-990-7688, and we will provide you with help.

### 6. How can I remove a device?

To remove a device, select the device from your main device list. Tap the "pencil" icon and choose "Remove Device" and wait for the LED indicator to blink. NOTE: REMOVING THE DEVICE WILL ERASE THE CONNECTION SETTINGS, AND YOU MAY NEED TO PAIR IT AGAIN TO RECONNECT.

## 02 / TROUBLESHOOTING

### 1. Having trouble connecting to Bluetooth?

Make sure you've allowed access to Bluetooth and that at least one of these lights is within Bluetooth connection range.

### 2. Do I need a hub?

A smart hub is required if you want to use the light with a smart speaker.

Need further assistance? We're here to help! Please visit <https://www.leonlite.com/contact> or call +1 (800) 990-7688.

**LeonLite** Product innovation has always been a critical driver of LEONLITE's business. In a highly competitive industry, we constantly strive to develop new products that offer homeowners unique advantages in terms of style, installation, and energy efficiency. In addition, our products meet the industry's strictest safety and performance standards to ensure product quality.



TORCHSTAR CORP

LeonLite

LITEdge

3768 Milliken Ave, Suit A  
Eastvale, CA 91752

Questions or Comments

1-800-990-7688

[info@leonlite.com](mailto:info@leonlite.com)

[www.leonlite.com](http://www.leonlite.com)

© 2022 TORCHSTAR CORP

All rights reserved