



**LeonLite** | LITE<sup>edge</sup>

## Smart Pendant Light

Quick Start Guide  
Guide de démarrage rapide  
Guía de inicio rápido

## DOWNLOAD LITEEDGE APP



## NOTE // Allow Access to Bluetooth



### BLUETOOTH CONNECTIVITY IS REQUIRED

Please **ALLOW** LITEEdge app to use the Bluetooth. This will allow LITEEdge app to find and connect to certain smart light.

## PRODUCT FEATURES



2.4GHZ



BLUETOOTH



CONTROLLER



COLOR  
CHANGING



ADJUSTABLE  
COLOR TEMP



AC120-240V  
ONLY



NOT  
WATERPROOF



INDOOR USE  
ONLY



0-12 CHILDREN  
WARNING

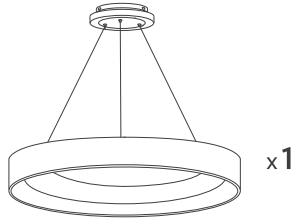


ELECTRICIAN  
REQUIRED

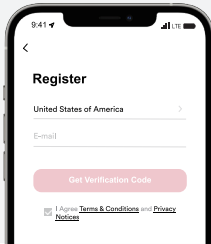
## WARNING & DISCLAIMER

Proper setup of this device requires blinking lights. Please take precautions during the activation process, and avoid direct eye contact with or placing a cover over the light until successful pairing is complete to prevent potential discomfort or photosensitive seizure.

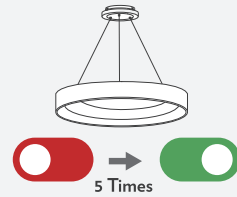
## SINGLE LIGHT PAIRING AND CONNECTION



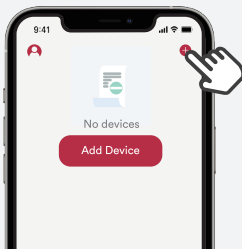
- 1 Register and login.



- 2 To set the light to pairing mode, simply turn it OFF-ON five times and watch as it begins blinking.



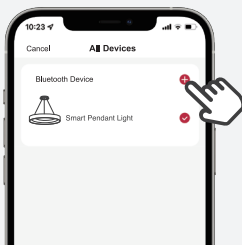
- 3 Press "+" while the light is still in pairing mode (blinking).



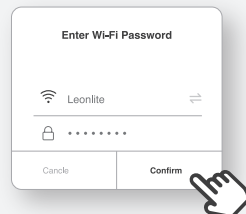
- 4 Press "Go to add" button.



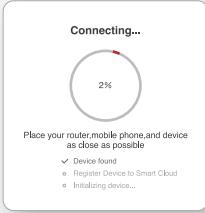
- 5 Select the light and press "+".



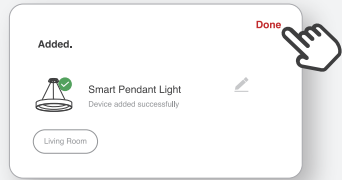
- 6 Input WIFI name & password.



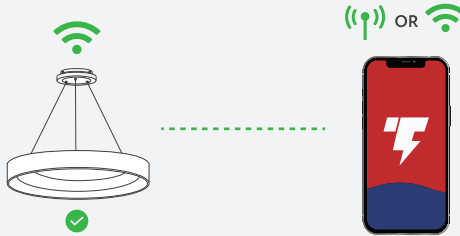
## 7 Connecting...



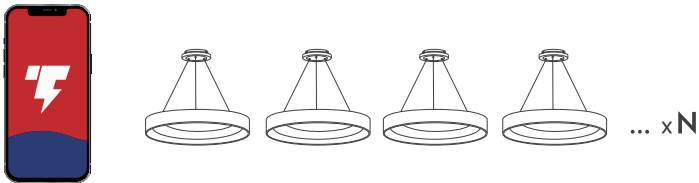
## 8 Successfully added.



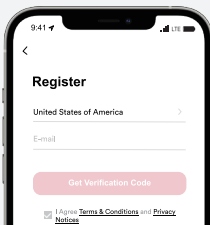
## ✓ Success.



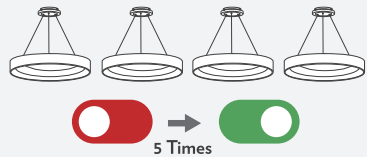
## MULTIPLE LIGHTS PAIRING AND CONNECTION



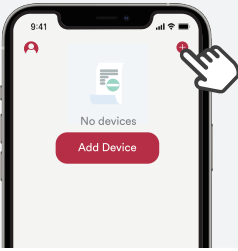
## 1 Register and login.



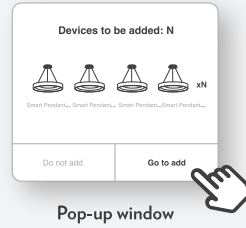
## 2 To set the lights to pairing mode, simply turn them OFF-ON five times and watch as they begin blinking.



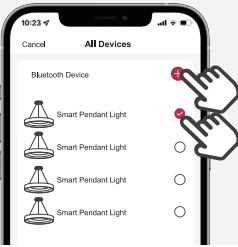
- 3 Press “+” while the lights are still in pairing mode (blinking).



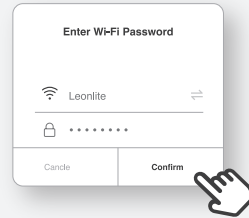
- 4 Press “Go to add” button.



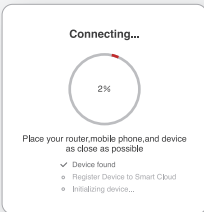
- 5 Select a light and press “+” to add it to App.



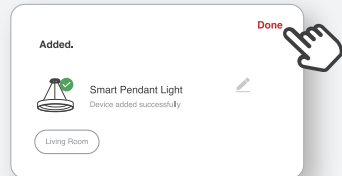
- 6 Input WIFI name & password.



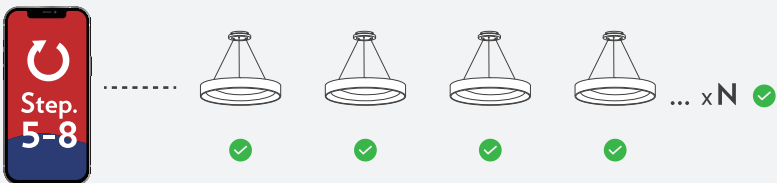
- 7 Connecting...



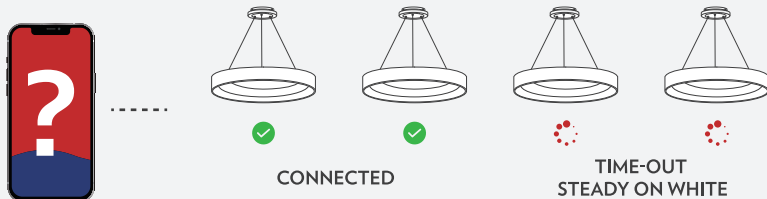
- 8 Successfully added.



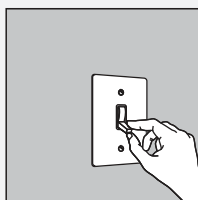
- 9 Complete each light connection one at a time, proceeding in order from Step 5 to 8 until all connections are established.



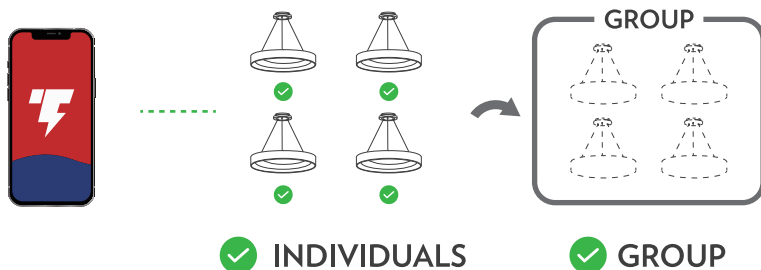
- ✘ Some lights fail to connect due to time-out when connecting multiple lights.



- 1 Toggle the light(s) OFF and then ON again to reset the time-out light(s).



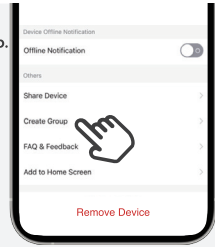
- ✔ Now pair the remaining lights with LITEdge App and further illuminate your space!



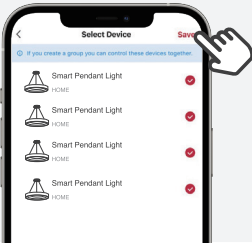
1 Tap "⌵".



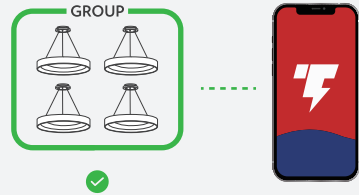
2 Create a group.



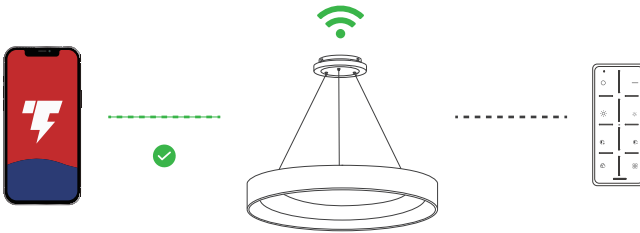
3 Select the lights that you'd like to add to the group.



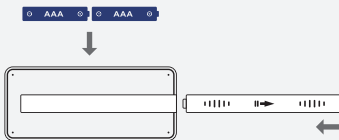
✓ Success.



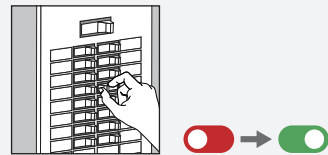
## FEATURE // Pairing with Remote



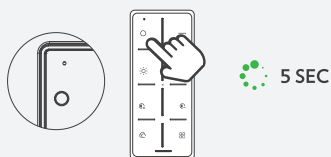
1 Install 2 x AAA Battery.



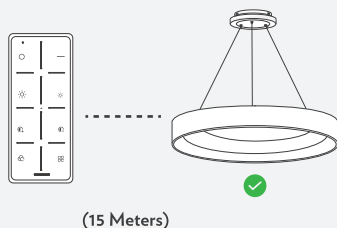
2 Power on the light.



- 3 To pair the remote with your light, press and hold the top-left button for five seconds. If there is difficulty in establishing connectivity between them, switch off then reactivate the light before trying again.



✓ Success.



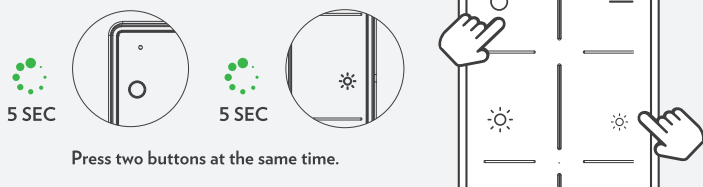
## TROUBLESHOOTING

### Light Lost Connection with Remote/ Reset Remote

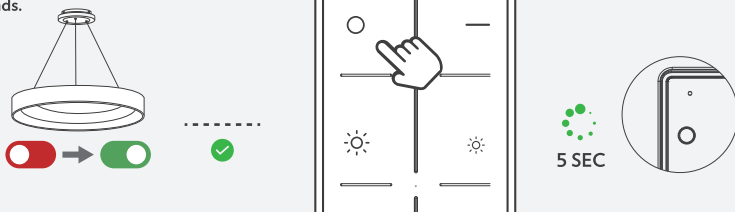
- ✗ The light connects to the App successfully but fails to connect to the remote.



- 1 To initiate a remote reset, power on the light and simultaneously press down "ON" and "Brightness -" buttons for five seconds.



- ✓ Ensure a successful pairing of your remote, powering down and back on the light, then pressing and holding the ON button for five seconds.

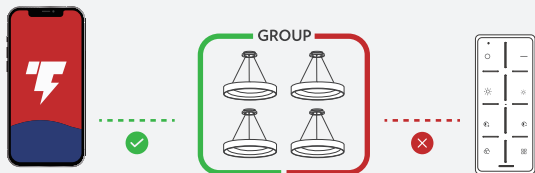




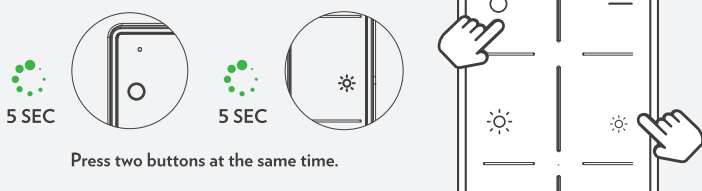
## TROUBLESHOOTING

### Control Multiple Lights with a Remote

- ✗ Need to command multiple lights at once? With a few simple steps, you could easily create an efficient remote setup. Let's get started!

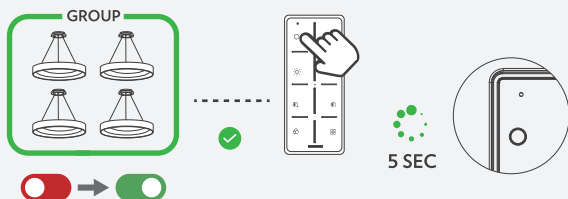


- 1 To initiate a remote reset, power on the lights and simultaneously press down "ON" and "Brightness -" buttons for five seconds.



Press two buttons at the same time.

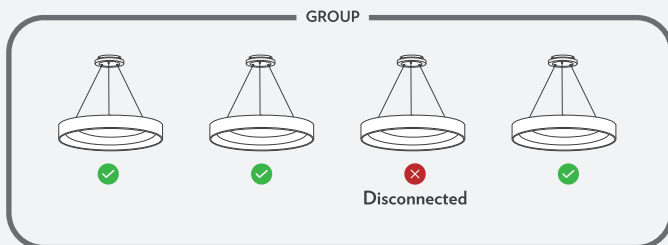
- ✓ Ensure a successful pairing of your remote, powering down and back on the light, then pressing and holding the ON button for five seconds.



## TROUBLESHOOTING

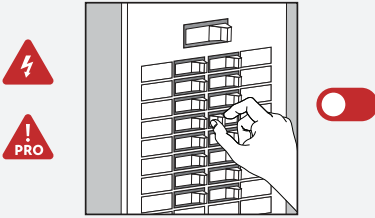
### One of All Lights Lost the Connection

- ✗ If one of the lights in your group is disconnected, there are steps you can take to easily re-establish connection.

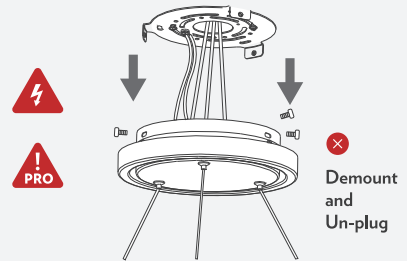


**Method 1:** Reset and pair the disconnected light individually (efficient but may require professional knowledge).

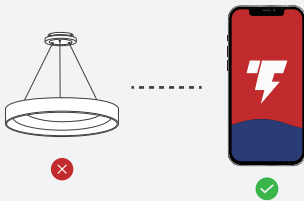
1 Turn off the main power/switch.



2 Remove the disconnected light from the system.

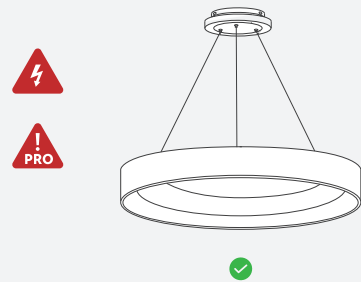


3 Power on the light individually, reset, and connect.

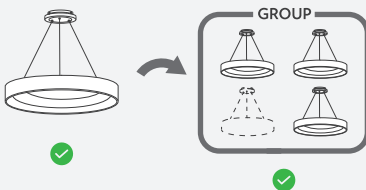


Blinking (Reset: ON-OFF 5 times, then ON)

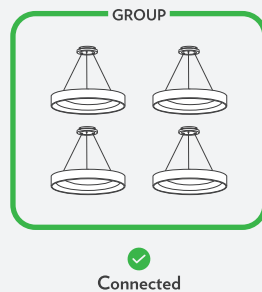
4 Mount it back.



5 Add the light back to the existing group.

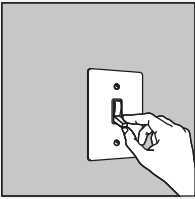


Success.

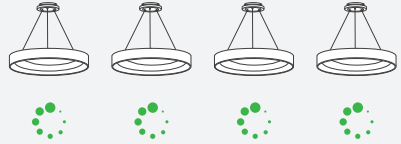


**Method 2:** Reset and pair the whole system (easy but maybe time-consuming).

1 Reset by wall switch.



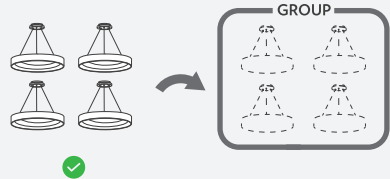
2 Reset all lights (ON-OFF x 5, then ON)



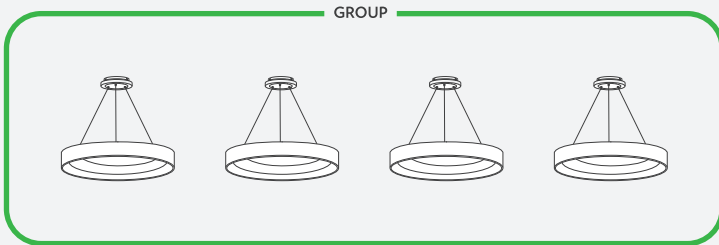
3 Pair all lights.



4 Create a group/Add to a group (If necessary).



✓ Success.



## 01 / FREQUENTLY ASKED QUESTIONS

### 1. How do I share devices with other users?

(1) You can share your LITEdge smart devices via the LITEdge App. Tap the "Me" icon on the bottom right corner and select "Home Setting", then tap the home you want to share (e.g., John's home) to enter the Home Settings page.

(2) In the home setting page, select "Add Member", then you can share your devices by adding other's LITEdge account or inviting them by text message or email.

### 2. How do I group multiple devices together?

(1) If you are using the Alexa or Google Home App to control your smart devices, you can follow their "Add to home" process. They will guide you to link your LITEdge smart devices to your Alexa or Google Home App, and help you to create a room to group them.

(2) If you are using the LITEdge App (recommended, for accessing more features and advanced settings) to control your smart devices, simply tap the device icon from your main device list, tap the "pencil" icon and select "Create Group". Then, you can easily add your preferred devices to a group and control them all together.

### 3. How many devices can I control?

Our App can control an unlimited number of devices. Maybe there is a limit on the number of devices that can be connected to your router.

### 4. My device has a funny name, how do I rename it?

From your main device list, tap the device whose name you want to change. Then tap the "pencil" icon beside the default device name. You'll then be able to rename the device.

### 5. What should I do if the device is offline or disconnected?

Typically, when this happened, just unpair and pair the device again and it will work. But before doing that, please make sure your Wi-Fi router is online and in range (i.e., you have the internet). If it doesn't fix, feel free to call us at +1 800-990-7688 and we will provide you with help.

### 6. How far will my Wi-Fi signal reach?

The range of your home Wi-Fi is mostly dependent on your home router and the conditions of the room. Check specifications of your router for exact data.

### 7. If my Wi-Fi/Internet goes down, will my app still work?

Our products/App need to be connected to Wi-Fi and the internet to be used remotely.

### 8. How do I remove devices?

(1) Open the LITEdge App. Tap on the device icon from your main device list, tap the "pencil" icon and select "Remove Device".

(2) When the device is removed successfully, the LED indicator will start to blink.

**NOTE:** REMOVING THE DEVICE WILL ERASE THE CONNECTION SETTING OF THE SMART LIGHT. YOU MAY NEED TO PAIR IT AGAIN TO RECONNECT.

## 02 / TROUBLESHOOTING

### 1. Can not connect to Wi-Fi?

Make sure you entered the correct Wi-Fi password. Check if there is an internet connection problem. Check if the Wi-Fi signal is too weak to set up.

### 2. Do I need Hub or Zigbee?

No hub required. You can connect the product directly to your Wi-Fi network.

Need more help? We are always here to help! Contact us by visiting <https://www.leontile.com/contact> or calling +1 (800) 990-7688

**LeonLite** Product innovation has always been a critical driver of LEONLITE's business. In a highly competitive industry, we constantly strive to develop new products that offer homeowners unique advantages in terms of style, installation, and energy efficiency. In addition, our products meet the industry's strictest safety and performance standards to ensure product quality.



TORCHSTAR CORP

LeonLite

LITEdge

3768 Milliken Ave, Suit A  
Eastvale, CA 91752

Questions or Comments

1-800-990-7688

[info@leonlite.com](mailto:info@leonlite.com)

[www.leonlite.com](http://www.leonlite.com)

© 2022 TORCHSTAR CORP

All rights reserved