

SPARTAN II, Cargo Pants, 100% Cotton Canvas, 240gsm.

Article # E10678



CAT I

FEATURES:

- 100% Cotton Canvas Fabric.
- Weight: 240gsm.
- Side pocket on the left leg with Velcro and flap+ pen & mobile pocket.
- Double reinforced side pocket on the right leg with Velcro and flap+ ruler, hammer and tools loop.
- Large belt loop with waist band.
- Dual contrast bartacks.
- Abrasion resistant antiwear inserts.
- Abrasion resistant antiwear with keep pad insert.

ERP CODE: E1067828

Colour: Grey/ Black.

SIZE: S – 4XL.

ERP CODE: E1067829

Colour: Khaki/ Grey.

SIZE: S – 4XL.

ERP CODE: E1067831

Colour: N.Blue/ R.Blue.

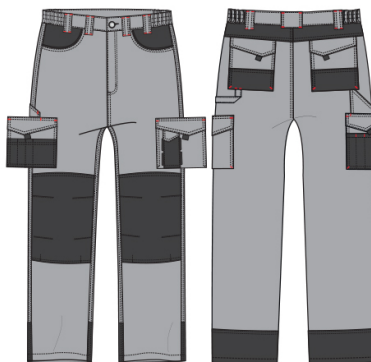
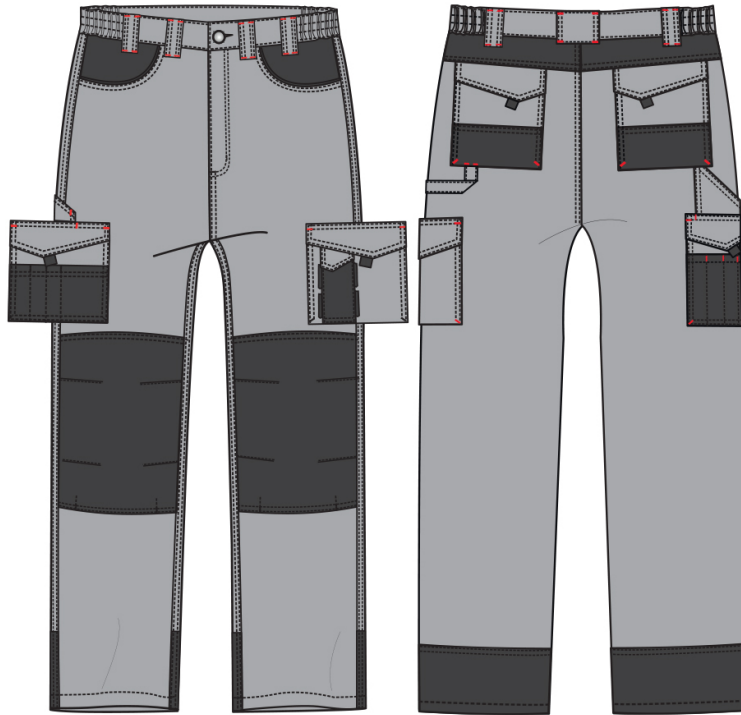
SIZE: S – 4XL.

G.Weight/N.Weight:22.00kgs/crtn/21.00kgs/crtn

Carton dimension: 51.00x39.00x35.00cm

Cubic meter/Carton: 0.070

Packing: 1pc/polybag, 30pcs/carton



SPARTAN II - Grey/ Black
E1067828



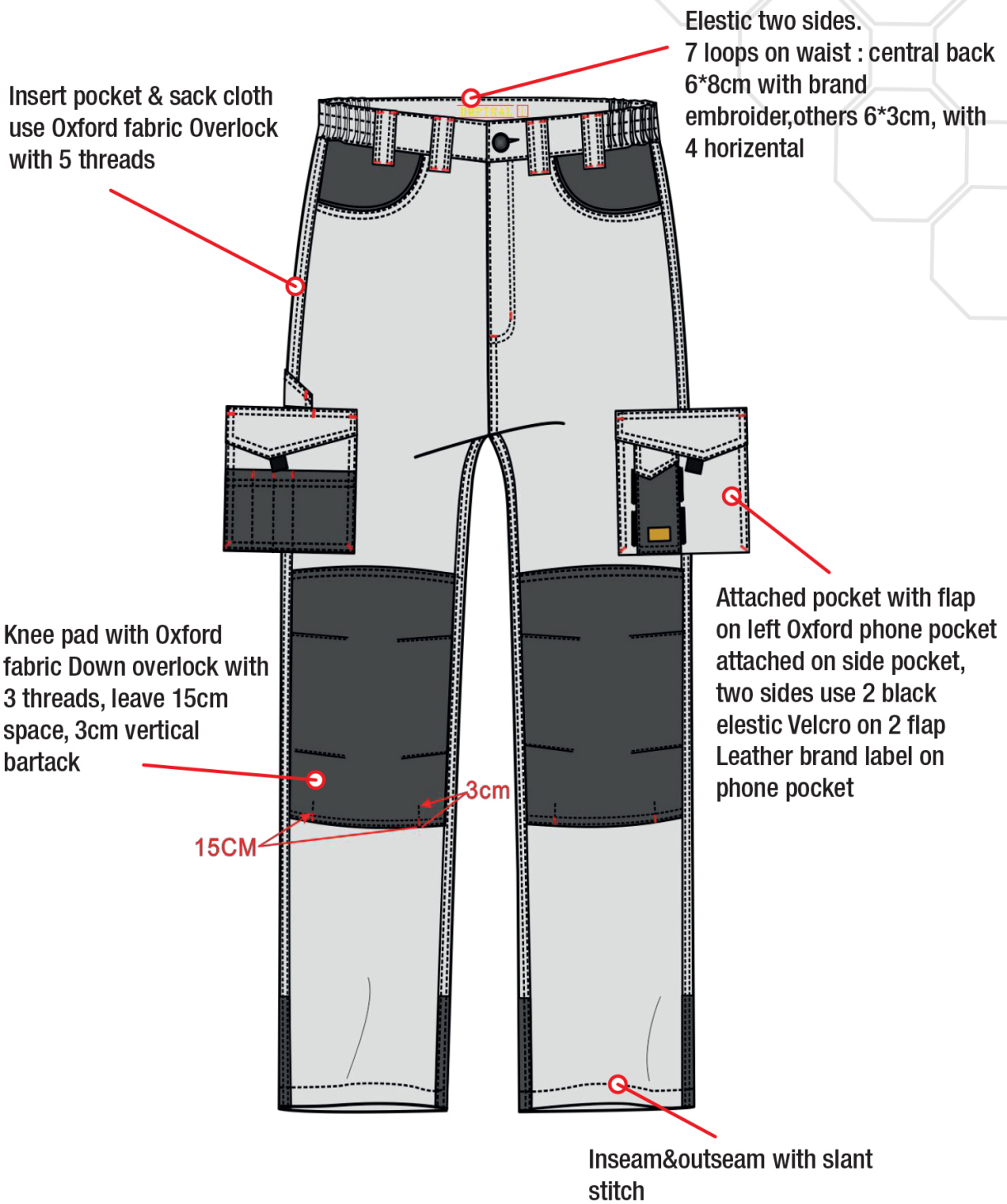
SPARTAN II - Khaki/ Grey
E1067829



SPARTAN II - N.Blue/ R.Blue
E1067831

SPARTAN II, Cargo Pants, 100% Cotton Canvas, 240gsm.

Article # E10678



SPARTAN II, Cargo Pants, 100% Cotton Canvas, 240gsm.

Article # E10678

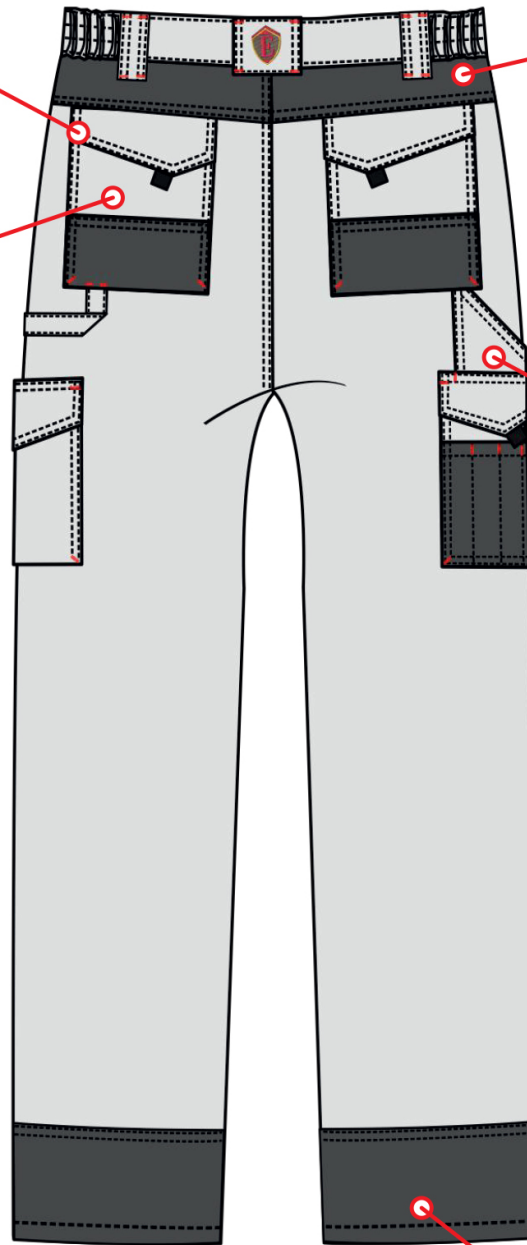


All bartacks thread same as combination

Oxford fabric under

Back pocket with oxford fabric on downside
Velcro under flap Pocket two sides with vertical bartack, corner with inclined bartack Tool loop one left, one side under the

Ruller pocket on right
Attached pocket with flap, velcro with blind stitch under falp Oxford attached pocket on under pocket, slant stitch divided into 1 big



Back cuff with oxford combination fabric

SPARTAN II, Cargo Pants, 100% Cotton Canvas, 240gsm.

Article # E10678



Part size	S	M	L	XL	2XL	3XL	4XL	5XL
LENGTH	101	103	105.5	107	109	111.3	111.3	115.3
HIP	102	106	110	114	118	122	126	130
WAIST	88	92	96	100	104	108	112	116
INSEAM	74	75.5	77	78.5	79.5	81.5	53	84.5
1/2 THIGH	32.5	33.5	34.5	35.5	36.5	37.5	38.5	39.5
1/2 CUFF	23.5	23.5	24	24	24	24.5	24.5	24.5