

Chief Tapes

195gsm Twill Cotton Pant & Shirt with Tapes



EN CATI

Features:

100% Twill Cotton.

Sanforized, Mercerized & Pre-Shrunk.

Fabric Weight:

195 GSM.

Shirt:

5 cm tape cross shoulder & sleeves with slant stitches.

Two chest pocket, left pocket with flap, snap button.

Two big insert pocket on the bottom, pocket opening with vertical bartacks.

Pant:

6 loops on waist, elastic band in back waist.

1 button in front, zipper closure for pants.

Insert pocket on both sides.

Back pocket on right with four eyelet button closure, ruler pocket on right back.

5cm tape around

1cm roll up cuff.

Gross Weight/Carton: 19 kgs.

Carton Dimension: 51 x 39 x 28 cms.

Cubic Meter/Carton: 0.0557.

Packing/Carton: 25 pcs.

Sizes: S - 4XL



CHIEF Tapes - Navy Blue
A50506040



CHIEF Tapes - Patrol Blue
A50506280



CHIEF Tapes - Grey
A50506070



CHIEF Tapes - Khaki
A50506050

Chief Tapes

195gsm Twill Cotton Pant & Shirt with Tapes



NEW AMERIZA PANTS&SHIRT WITH TAPE

5cm tape cross shoulder & sleeves with slant stitches

Loop&size label under middle collar, heat transfer neck label 2cm under collar

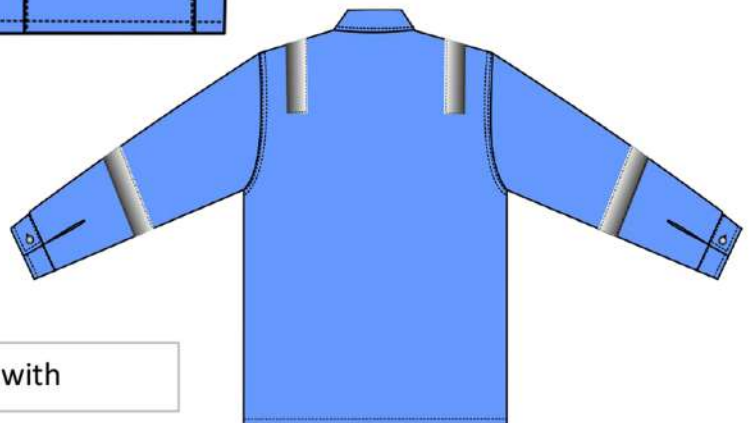


front fly with button closure

two chest pocket, left pocket with flap, snap button and

two big insert pocket on the bottom, pocket opening with vertical bartacks

sleeve opening with

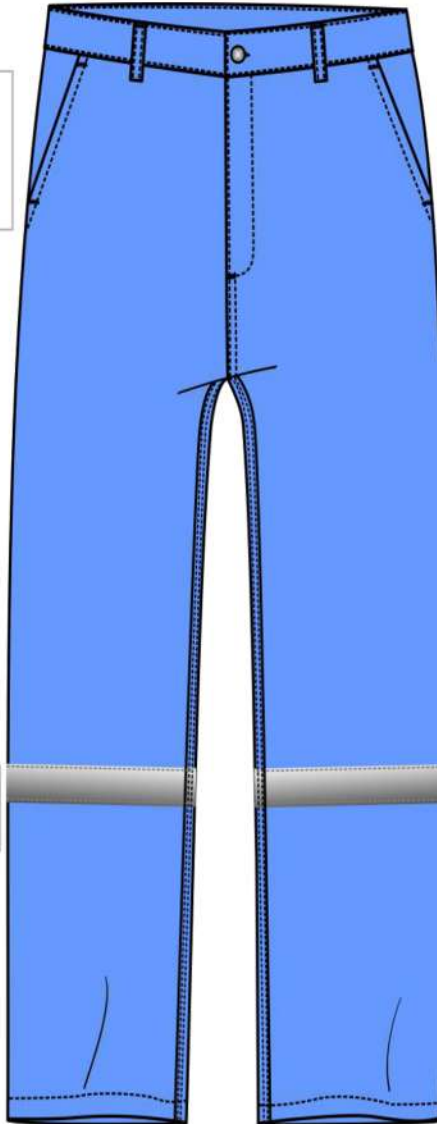


Chief Tapes

195gsm Twill Cotton Pant & Shirt with Tapes



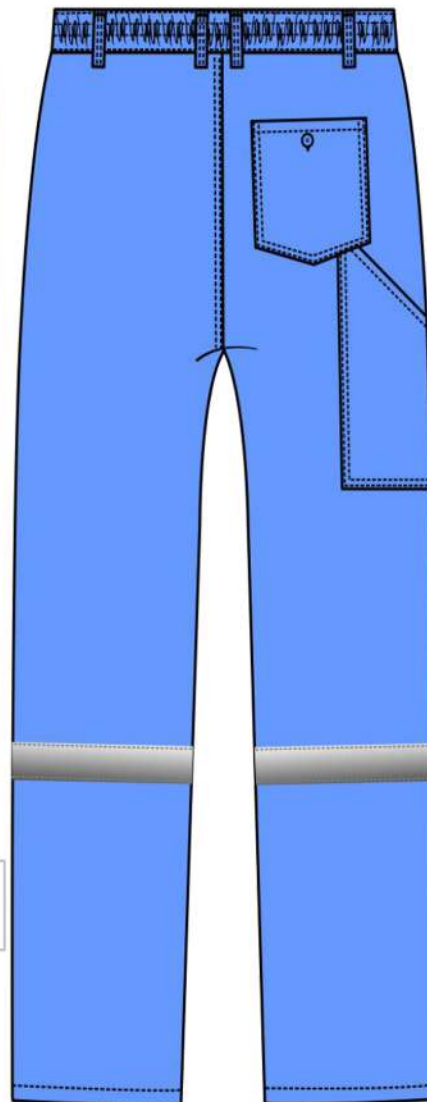
insert pocket on both sides



5cm tape around

1cm roll up cuff

6 loops on waist, elastic band in back waist. 1 button in front, zipper closure for pants



back pocket on right with four eyelet button closure, ruler pocket on right back

Chief Tapes

195gsm Twill Cotton Pant & Shirt with Tapes



| PART SIZE | S | M | L | XL | 2XL | 3XL | 4XL | 5XL |
|-----------------|--------|------|-------|------|--------|-------|-------|-------|
| SHIRT LENGTH | 72 | 74 | 75.5 | 77 | 78.5 | 81 | 82.5 | 84.5 |
| CHEST | 106 | 111 | 116 | 121 | 126 | 131 | 136 | 141 |
| SHOULDER | 39 | 41.5 | 43.5 | 45.5 | 48 | 51.5 | 54.5 | 56.5 |
| SLEEVE LENGTH | 56 | 58 | 60 | 62 | 64 | 66 | 68 | 70 |
| SLEEVE OPENNING | 27*5.5 | | | | 28*5.5 | | | |
| COLLAR | 43.5 | | | | | | | |
| PANTS LENGTH | 101 | 103 | 105.5 | 107 | 109 | 111.3 | 113.3 | 115.3 |
| HIP | 102 | 106 | 110 | 114 | 118 | 122 | 126 | 130 |
| THIGH | 88 | 92 | 96 | 100 | 104 | 108 | 112 | 116 |