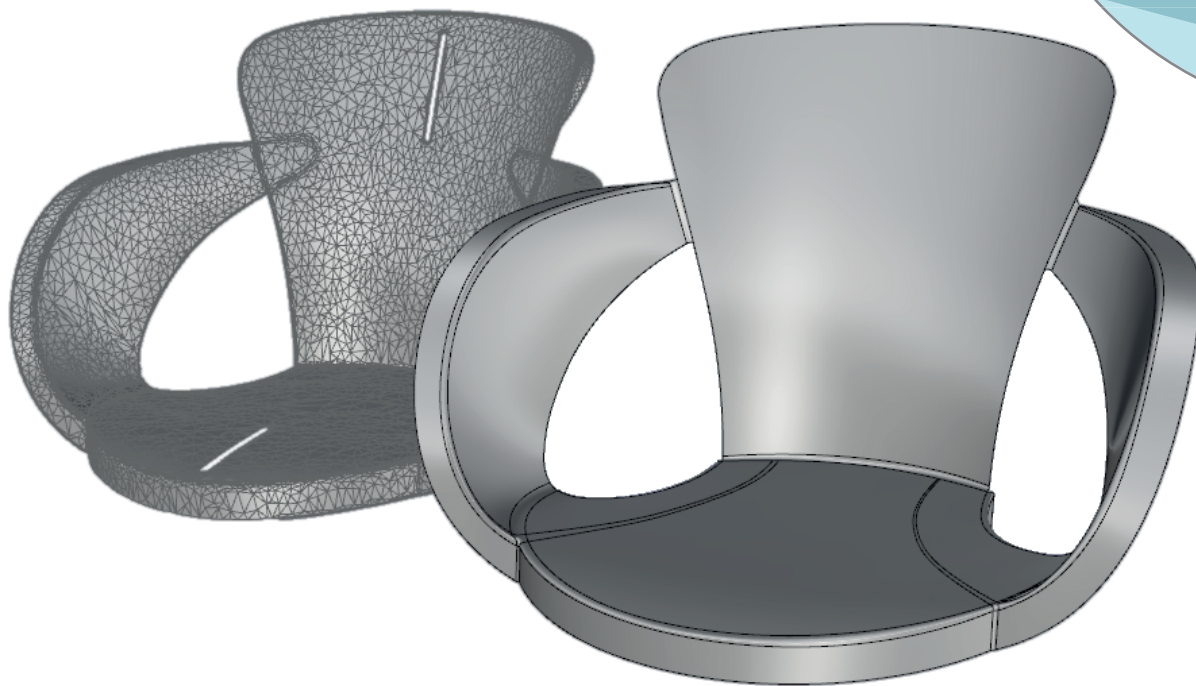


Mesh2Surface is a plug-in for SolidWorks

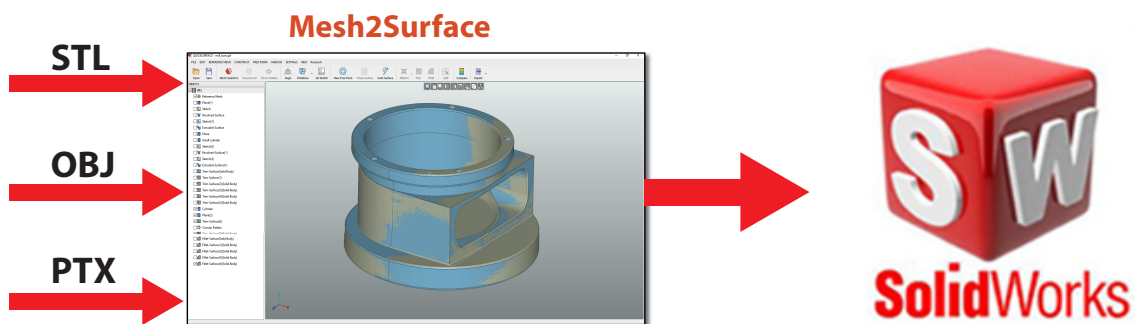
mesh2surface



The modern 3D reverse engineering software for converting 3D scan meshes into CAD models



Convert scan data into professional CAD models in simple steps. Mesh2Surface provide you with affordable tools to reverse engineer your parts into surface and solid data. Fast, accurate and easy.



www.mesh2surface.com

RapidScan3D

Why **Mesh2Surface** ?

Mesh2Surface is a plug-in for SolidWorks

It is modern 3D reverse engineering software for converting 3D scan meshes into CAD models

Mesh2Surface Mechanical

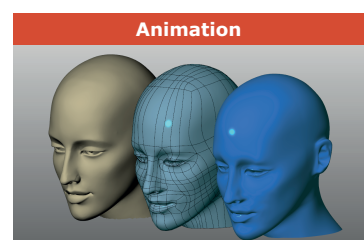
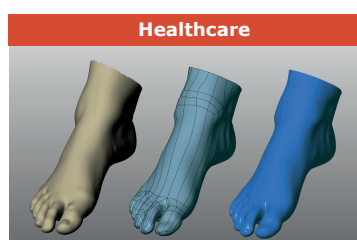
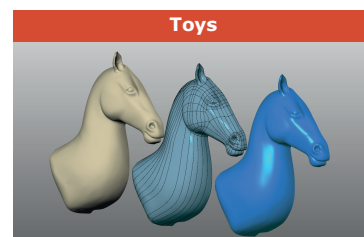
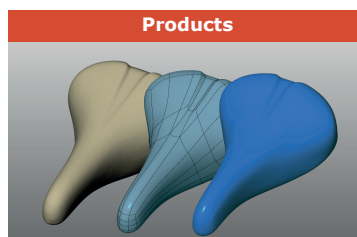
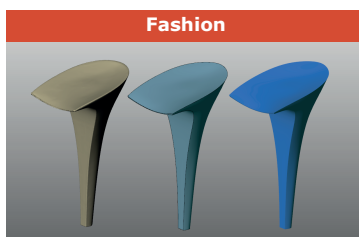
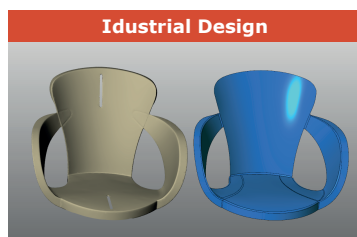
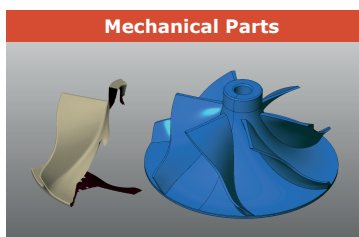
- Curvature based mesh segmentation
- Extract primitives, patch, extrusion and revolved surfaces
- Symmetry Plane definition
- Align to world coordinate system
- Interactive 2D and 3D sketching
- CurveNetwork, Sweep, Loft and Blend surfaces
- Real-time tolerancing control
- Toleranced patch fit
- Fillet measurement
- Deviation Analyzer

Mesh2Surface Premium

All Mechanical features plus:

- Free form organic modelling
- Snap-to-Mesh Technology
- Real-time tolerancing for free form modelling
- Manipulator (gumball) based modelling
- Symmetry based modelling
- Crease edges
- Surface quality analysis
- Automatic Surfacing
- PTX Points Import

Mesh2Surface is designed for anyone who uses 3D scanning regardless of the size of their business – from individual entrepreneurs, hobbyist, to small and large manufacturing companies, who need to make reverse engineering of their scanned meshes.



Rapid Scan 3D

(562) 912-3544

info@rapidscan3d.com

www.rapidscan3d.com

www.mesh2surface.com

RapidScan3D