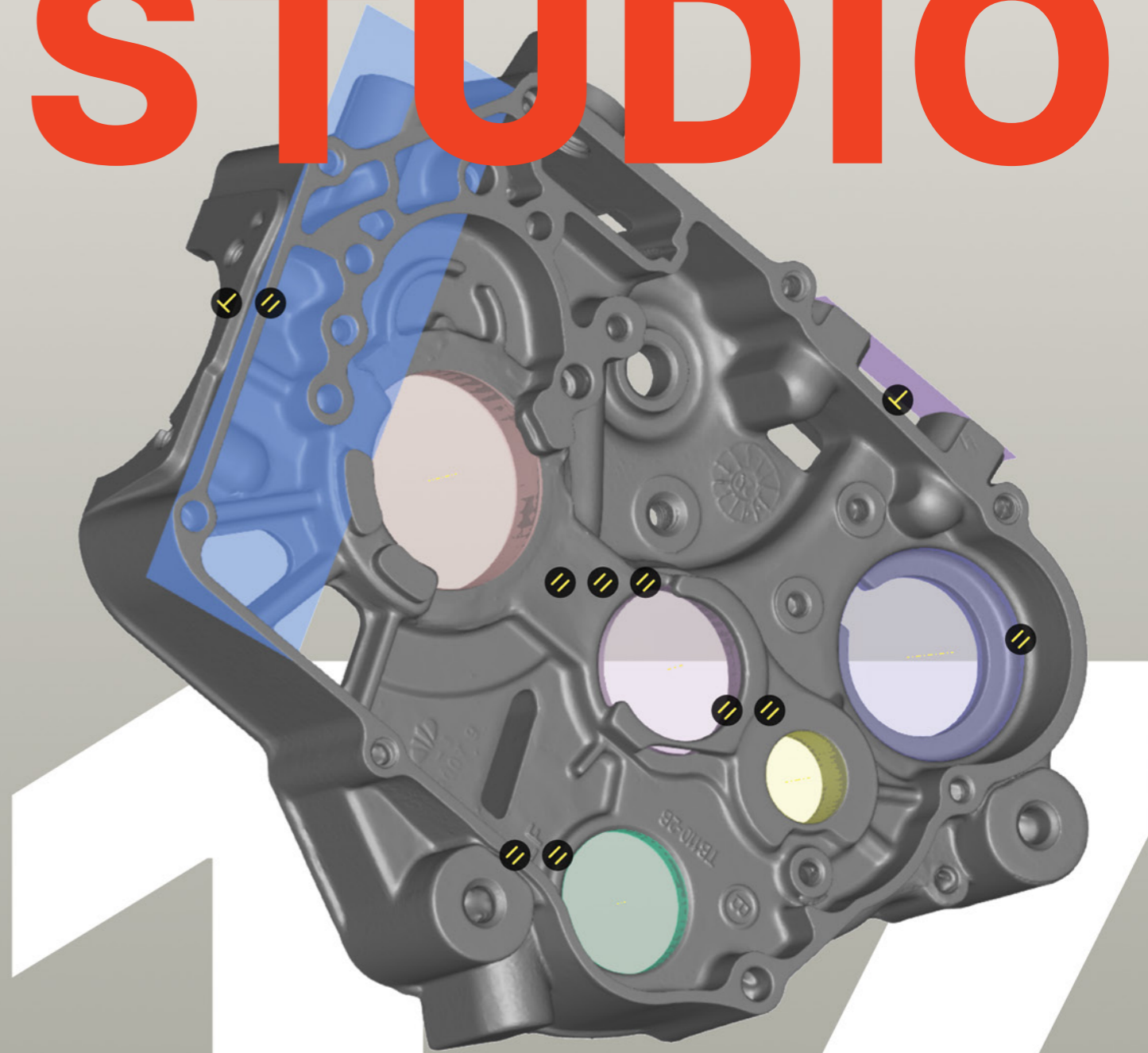


ARTEC STUDIO



OFFICES

20 rue des Peupliers
L-2328, Luxembourg

info@artec3d.com
www.artec3d.com

2880 Lakeside Dr. #135
Santa Clara, CA 95054, USA

14/F, China Merchants Plaza
(South), 333 Chengdu Bei Lu,
Jing'an District, Shanghai,
China

Artec Studio 17.

The power is in the software

Transform your 3D scanner with industry-acclaimed software for professional 3D scanning and data processing.

Easy 3D scanning. High-precision results.



High precision

Whether you choose Autopilot for ease of use, or manual mode for full control and flexibility, Artec Studio never compromises on precision.



Time-saving quality inspection

Fast measurements and mesh-to-CAD analysis right in Artec Studio. Fully integrated with Geomagic Control X for advanced inspection within the Artec Studio interface.



HD Mode

Artec Studio's AI neural network delivers astonishing, high-resolution scans via HD Mode for users scanning with Eva or Leo.



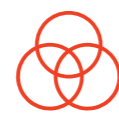
Easy to learn

Artec Studio is designed to be intuitive and easy to use and learn, so all your attention can be focused on your work.



Scan-to-CAD

Accelerate your engineering by fitting primitives to your 3D model and precisely positioning it. Export STEP files directly to SOLIDWORKS, or complex meshes to Design X or Geomagic for SOLIDWORKS.



The colors you seek

Use Artec Studio's host of CGI tools, including full-color 3D scan data, texturizing via photogrammetry, and auto glare removal to create replica 3D models with perfect geometry and color representation.



Create and process huge datasets

Imagine a software so powerful you can work with datasets of up to 500 million polygons. Artec Studio is perfect for scanning large objects and for making 3D models in maximum resolution.



SOLIDWORKS integration

An officially recognized partner product of this leading CAD software, Artec Studio requires just one click for your meshes and CAD objects to be exported into SOLIDWORKS.

Updated yearly

The possibilities of what you can do with your scanner are constantly growing with annual updates to Artec Studio. You're essentially upgrading to a new scanner every year, with game-changers such as slashing processing time, or doubling the resolution of your Eva or Leo scanner with HD Mode.

With each Artec Studio update, 3D scanning gets easier and better – you feel like you're working with a whole new scanner! That's why we choose Artec scanners and software for the Royal Netherlands Navy.

BEN JANSEN

CNC Coordinator, Royal Netherlands Navy

Artec 3D continues generating significant innovations in an already matured 3D scanning market. Artec Studio improves with age, and every year feels like you're working with a brand new 3D scanner.

KEVIN SHAIN

Laser Design

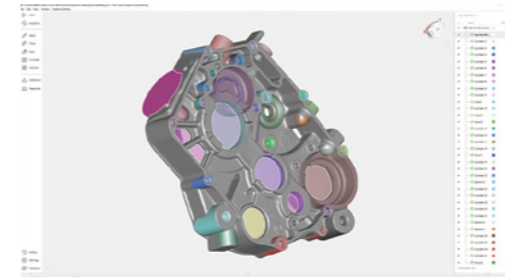
Scan-to-CAD for reverse engineering

The right features can make scan-to-CAD for reverse engineering a breeze, and that's exactly what you'll get with Artec Studio. From boolean operations to complete automatic scan-to-CAD conversions, then export to SOLIDWORKS in just one click.



Scan-to-CAD for quality inspection

When it comes to quality inspection, Artec Studio offers the tools you need for streamlining your pre-production, inline, and final inspection workflows: precise measurements, fast, accurate mesh-to-CAD alignment, and mesh-to-mesh or mesh-to-CAD deviation maps.



Control X integration

Create customized reports with Artec Studio by selecting the object or objects you need to inspect while Control X runs in the background. The reports most essential to your work will be generated for you.



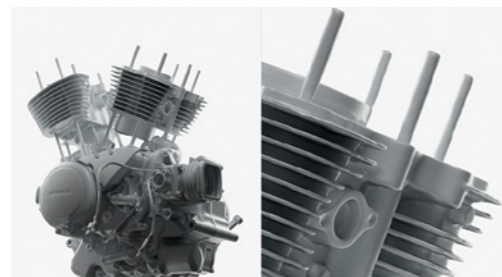
Picture-perfect CGI with photogrammetry + scan data

Create accurate, high-res and picture-perfect 3D models ready for use in CGI, VR/AR, and animation. In Artec Studio, you can now combine your scan data and photogrammetry all in one place for both highest-quality texture and best-quality geometry.



3D scan black, shiny, or fine areas

Artec Studio analyzes the surface of your object and automatically adjusts the sensitivity of your scanner to pick up areas that are tricky for 3D scanning. As a result, even new users can digitize black, shiny objects, or hair with ease.

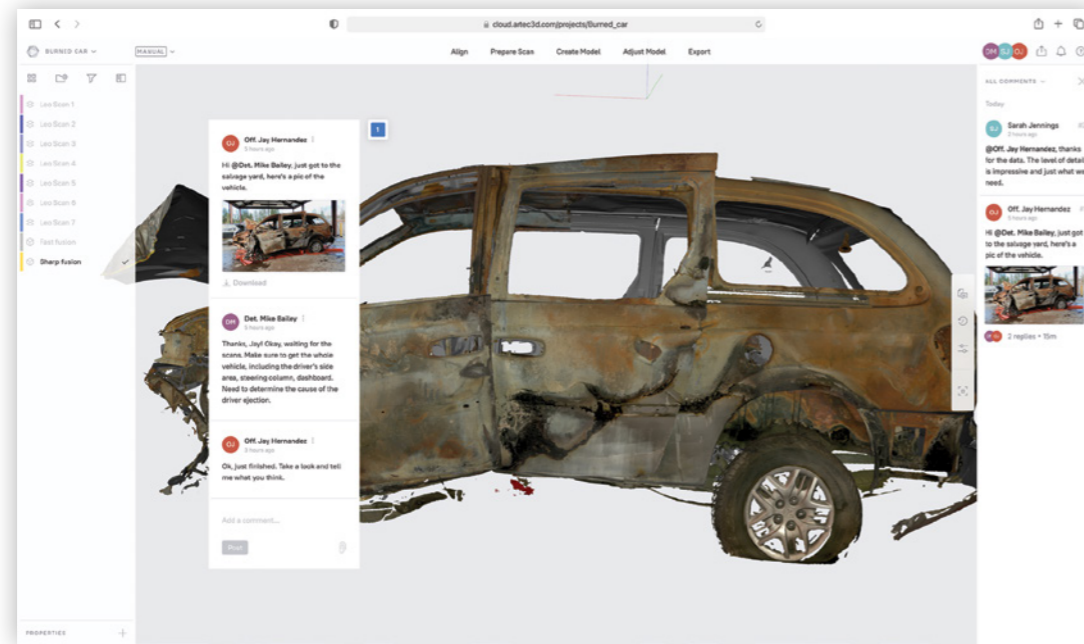


HD Mode

If you're after the highest quality, we've got good news: Artec Studio operates in High-Definition Mode. Step up your scanning with Artec Leo and Eva to capture high-resolution HD data for ultra-sharp, clean, and detail-rich scans.

Collaborate with Artec Cloud

Upload your 3D data from Artec Studio to Artec Cloud for working remotely, collaborating with a team, or training new users. All from your browser.



Scan on a Mac

Install Artec Studio via Boot Camp to make high-quality scans, or process 3D data in your browser using the new Artec Cloud.

Easy export

Export your model to any industry-leading reverse engineering or 3D modeling software. Hassle-free export into a wide range of formats:

STEP, IGES, X_T, CSV, DXF, XML, OBJ, PLY, WRL, STL, AOP, ASC, Disney PTEX, E57, XYZRGB, BTX, PTX



Available in 15 languages

To ensure accessibility to individuals and teams all over the world, Artec Studio is available and fully functional in 15 different languages.

Chinese Simplified	Japanese
Chinese Traditional	Korean
Croatian	Polish
Czech	Portuguese
English	Russian
French	Spanish
German	Turkish
Italian	

Artec Studio 17 Specifications

QUALITY INSPECTION	AS17	AS16	AS15
Mesh-to-CAD comparison: import STEP, IGES, or X_T files	•	•	•
Mesh-to-CAD align	8x faster than AS15	8x faster than AS15	•
Datum align	•		
Enhanced target support	•		
Run Control X Inspection from Artec Studio	•	•	
Run Control X Batch Inspection from Artec Studio	•	•	
Surface distance maps: speed	70% faster than AS15	70% faster than AS15	Fast
Surface distance maps: deviation from CAD models or primitives	Full range of CAD primitives	Full range of CAD primitives	Basic range of CAD primitives
Surface distance maps: one-click annotations	•	•	•
Surface distance maps: point-by-point deviation	•	•	•
Measurements: perpendicular point to plane distance	•	•	
Measurements: distance between key points of primitives	•	•	•
Measurements: linear, geodesic, sections, distance maps, volume, annotations. Export to CSV, DXF, XML	•	•	•
Measurements: Export cross-section area, perimeter length, and mesh volume	•	•	•
Direct export to Control X	•	•	

SCAN-TO-CAD FOR REVERSE ENGINEERING

	Cylinder, sphere, cone, plane, torus, box	Cylinder, sphere, cone, plane, torus	Cylinder, sphere, cone, plane
Fit CAD primitives to 3D model			
Autosurfacing	•		
Boolean operations	•		
Split mesh by plane	•		
Freeform fitting	•	•	
Primitive constraints	Improved	•	
Precise positioning	•	•	•
Segment Brush: selection tool	Improved	•	
Sections: from fitted planes	•	•	
Sections: scale to bounding box	•	•	
Export fitted primitives in STEP, IGES, or X_T CAD formats	•	•	•
Export multiple open and closed contours directly to CAD	•	•	•
Direct export of fitted primitives to SOLIDWORKS	•	•	
Direct export of meshes to SOLIDWORKS via Geomagic plugin	SOLIDWORKS 2014-2022	SOLIDWORKS 2014-2021	SOLIDWORKS 2014-2020
Direct export to Design X	•	•	•

Artec Studio 17 Specifications

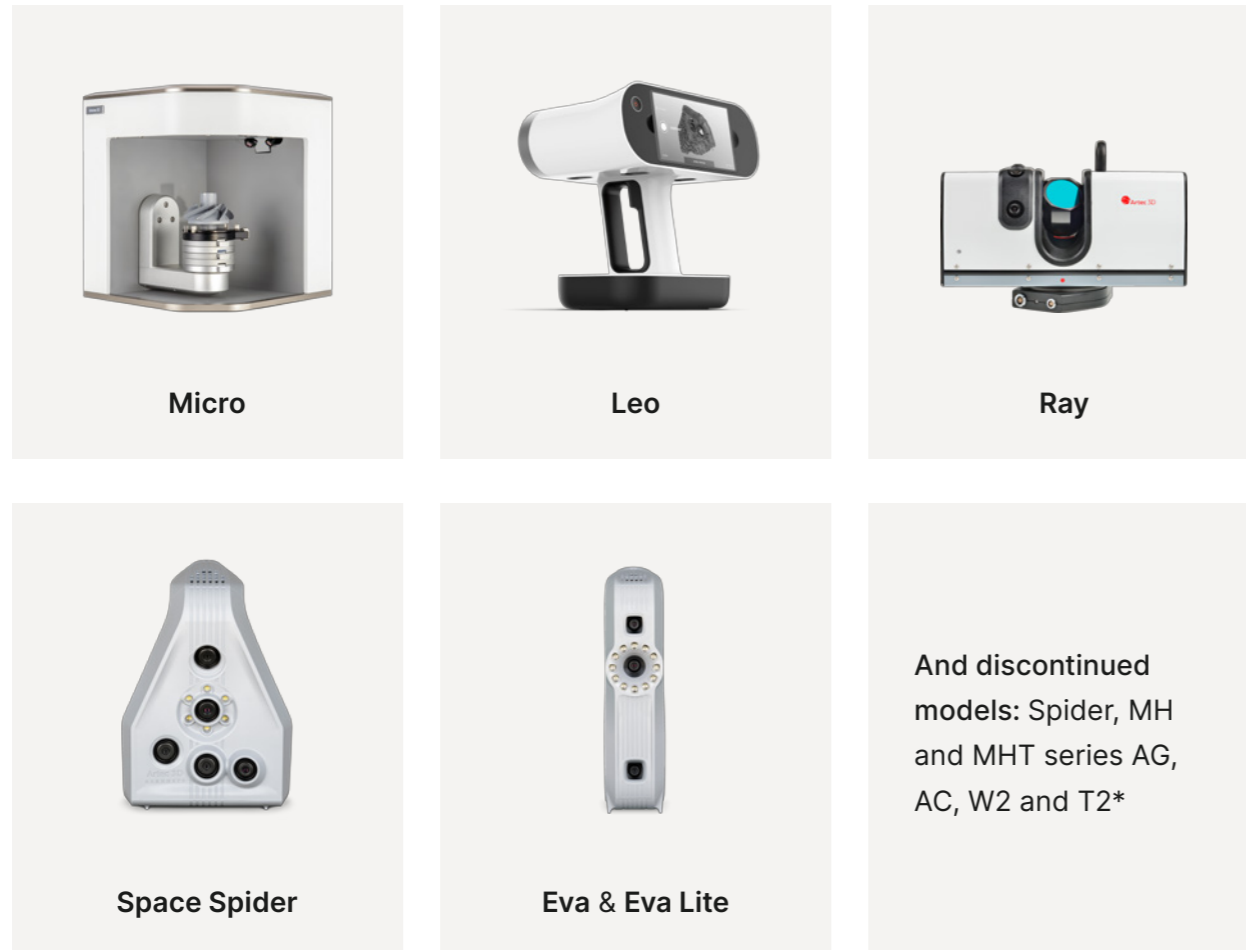
ADVANCED CGI TOOLS FOR THE PERFECT COLOR 3D MODEL	AS17	AS16	AS15
Photo-texture	•	•	
Photo-texture: photo viewing mode	•		
Rescaling by mesh alignment	•	•	
Auto glare removal	•	•	•
Model-to-model texture transfer	•	•	•
AI-POWERED HD MODE			
HD Mode for Leo and Eva	Extra sharp	Extra sharp	•
Improved HD reconstruction speed: Leo	1.5x faster than AS16	2x faster than AS15	
Improved HD reconstruction speed: Eva	2x faster than AS15	2x faster than AS15	
On-demand HD reconstruction for Eva	•	•	
Settings optimizer based on your GPU	•		
Multiple HD reconstructions with different settings	•	•	
Store Leo HD data on SD cards	•	•	
USER EXPERIENCE. FROM RAW DATA TO FINISHED 3D MODEL IN MINIMUM STEPS			
Project loading	10x faster than AS15	10x faster than AS15	Streamlined for speed
Background Auto-save	•	•	
Restore unsaved projects	•		
Smart RAM Optimizer	•	•	
Advanced grouping functionality: create, align, position	•	•	•
Auto-group for Eva, Space Spider, and Leo data capture	•	•	•
ADVANCED EDITING & 3D MODELING TOOLS			
Eraser: object selection	•		
Texture healing brush	•	•	•
Defeature and smoothing brush	•	•	•
Hole filling	New options: flat and smooth	•	•
Hole filling: bridges	•	•	•
HONED ACCURACY			
Auto temperature stabilizer for Eva	•	•	•
Next-generation registration for Eva and Space Spider	•	•	•
Improved tracking algorithms for scanning over distance & for scanning in loops	•	•	
Integration with ScanReference photogrammetry kit	•	•	•

SMART AUTOMATION	AS17	AS16	AS15
Fully automatic smart scanning for Micro	•	•	•
Auto-align	•	•	•
Autopilot: automatic data processing pipeline	•	•	•
Scan size optimizer	•	•	•
Smart base removal	•	•	•
EASY 3D SCANNING			
Auto-brightness: dynamic	•	•	•
Automated sensitivity for scanning black, shiny, and fine objects	•	•	•
3D Radar mode	•	•	•
Create 3D model from a combination of Artec 3D scanners	•	•	•
Texture and geometry tracking	•	•	•
FAST, POWERFUL 3D PROCESSING			
Fusion: speed	10% faster and with 30% less RAM		
Fusion: exclude faulty frames	•		
Support of large datasets	Up to 500 million polygons	Up to 500 million polygons	Up to 500 million polygons
Fast mesh simplification: refined	•	•	Standard
X-Ray mode	•	•	•
ERGONOMICS			
Customizable workspace	Now including panel layout	•	•
Swipe selection	•	•	•
Easy mass rename	•	•	•
3Dconnexion 3D mouse compatibility	•	•	•
Upload multiple Leo projects in one click	•		
Multiple object export	•	•	
CLOUD COLLABORATION			
Artec Cloud integration	•	•	
One-click 3D model share	•		

Artec Studio 17 Specifications

EXPORT FORMATS	AS17	AS16	AS15
Mesh	OBJ, PLY, WRL, STL, AOP, ASC, Disney PTEX, E57, XYZRGB		
Point cloud (Artec Ray only)	PTX, BTX, XYZ		
Reference targets	OBC	N/A	
Measurements	CSV, DXF, XML		
CAD	STEP, IGES, X_T		
HARDWARE SUPPORT			
3rd party sensor support	N/A		
Scanning on MacOS	Boot Camp		
Processing on MacOS	Artec Cloud or Boot Camp	Boot Camp	

Artec 3D scanners compatible with AS17:



*For full information on compatibility with discontinued scanners, please contact support@artec3d.com

Artec Studio price plans



AS17 Lifetime
US \$2,900

One-time payment for lifetime Artec Studio 17 only access.

Includes any updates to Artec Studio 17.

Excludes updates to subsequent versions.



Artec Studio subscription
US \$1,200 per year

Always have the latest version of Artec 3D's advanced scanning, processing, and editing software.

Major software updates released yearly, including new features and improved algorithms.

Keep your Artec 3D scanner ahead of the game.

Rapid Scan 3D
(562) 912-3544
info@rapidscan3d.com

→
Visit the [Artec Support Center](#) to view hardware requirements for Artec Studio.