



Information: 816 697 3411

**Web:** [WWW.HarperMotoGuzzi.com](http://WWW.HarperMotoGuzzi.com) **E Mail:** [Info@harpermoto.com](mailto:Info@harpermoto.com)

## ***PLEASE READ COMPLETELY BEFORE BEGINNING INSTALLATION***

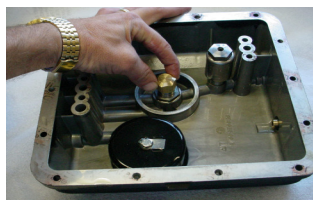
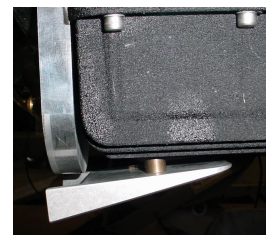
**Your Kit Contains:** 1 Aluminum wedge piece. 2 spacers. 1 stock oil filter. 2 pan gaskets. 1 brass cap. 4 long bolts. 14 short bolts. This page of instructions.

### **INSTALLATION INSTRUCTIONS FOR HARPER'S OUTSIDER**

**PT # 06 2065 1998 & NEWER & QUOTA**

1. Drain engine oil and remove all 18 oil pan polts.
2. Clean all gasket surfaces.
3. Remove oil filter and clean the oil pan.

Wedge installation



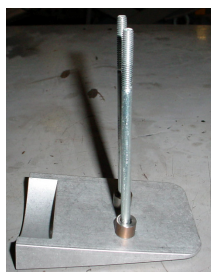
4. Install brass cap over oil filter fitting inside. Tighten securely. Locktite may be used, if preferred.

5. Install the Outsider and the oil pan to the engine with gaskets between the engine and the Outsider and between the Outsider and the oil pan.

6. Install all screws without tightening any of them.
- 6a. Install 2 front 6X100 bolts (not shown)
- 6b. Install wedge with 6X110 bolts with spacer on top of wedge, as shown, below. Start all screws in respective holes. Do not tighten, yet.



Perimeter bolt installation



7. Torque bolts to 7 lbs., pulling them evenly, using a cross pattern-pulling bolts evenly.
- NOTE:** Do **not** tighten one side & then the other.

10. Install the oil filter. **Note:** Use only Moto Guzzi factory oil filters. Do not use aftermarket filters. An improper fit may cause engine damage that can far outweigh the savings of a few dollars.

11. Refill engine with your favorite oil.

12. Start your engine and check the oil pressure. Watch your oil pressure light.

13. Check for leaks. If a leak is found, recheck for proper installation.

**We recommend: Engine Oil:** Mobil 1 synthetic or Valvoline petroleum base multi-viscosity 20/50 engine oil for the summer and 10/40 for winter use.

For **transmission and rear end** use Hypoid 90. You should consider adding Moly to the rear drive. If you prefer a synthetic transmission oil, go to our web site and click on "Oil". You'll find detailed information on Redline synthetic and Moly.

**HARPER ACCESSORIES** warranties the Harper's OUTSIDER against defects in materials and workmanship for a period of 90 days from date of purchase (must have invoice for return). Improper installation or any alteration of the product renders all warranties null and void. Warranty is limited to the replacement or repair of the product only, which is at the discretion of Harper Accessories.

Thank you for purchasing another quality Harper Accessory product!

# Outsider Instructions for the Tonti Frame Machines 1976-97

**Outsider Pt # 062066**

**PLEASE READ COMPLETELY BEFORE BEGINNING INSTALLATION.**

**Kit Contains:** 1 *Outsider*, 1 stock Oil Filter, 2 Pan Gaskets, 1 Brass Cap (**located on external oil filter fitting-for shipping purposes only**). 4 long bolts, 13 short bolts, this page of instructions. **Note:** Bolts not included, if the application is for square head engines.

## INSTALLATION INSTRUCTIONS

### Oil Filter Conversion Kit

1. Drain engine oil and remove sump.

Note: A. On models equipped with a factory sump spacer, the *Outsider* replaces the stock spacer.

B. On models not equipped with a factory spacer, the enclosed bolt kit must be used.

2. Clean all gasket surfaces.
3. Remove oil filter and clean the oil pan.
4. Install brass cap on oil filter fitting inside pan. Tighten securely. Locktite may be used, if preferred.
5. Install the *Outsider* and the oil pan to the engine with gaskets between the engine and the *Outsider* and between the *Outsider* and the oil pan.
6. Install the oil filter. **Note:** Use only Moto Guzzi factory oil filters. **Do not use aftermarket filters.**  
An improper fit may cause damage to your engine that can far outweigh the savings of a few dollars.
7. Refill engine with your favorite oil to proper level.
8. Start your engine and check the oil pressure. Watch your oil pressure light.
9. Check for leaks. If a leak is found, recheck for proper installation.

HARPER ACCESSORIES warrants the *Outsider* against defects in materials and workmanship for a period of 90 days from date of purchase. (Must have invoice for return.) Improper installation or any alteration of the product renders all warranties null and void. Warranty is limited to the replacement or repair of the *Outsider* unit only, which is at the discretion of Harper Accessories.

Thank you for purchasing another great HARPER ACCESSORY product.

## Harper's Moto Guzzi

**Information:** 816-697-3411 **FAX:** 816-566-3413

32401 E. Stringtown Rd. Greenwood, MO 64034

**Web:** [www.harpermotoguzzi.com](http://www.harpermotoguzzi.com) **E Mail:** [info@harpermoto.com](mailto:info@harpermoto.com)

**Hours-Central Time**

**Summer** April 1-Sept 30: M-F 9-5:30 Closed Sundays and all holidays

**Winter** Oct 1-March 31: M-F 9: 5:30 Closed Saturday, Sunday and all holidays