

Padding Upgrade Options

WPUP3U

Upgrade any 2" polyurethane foam wall padding to 3" polyurethane foam for added player protection or to meet local codes or project specifications.

WPUP2HD

Upgrade any 2" polyurethane foam wall padding to 2" high density foam for added player protection or to meet local codes or project specifications.

WPUPFRC

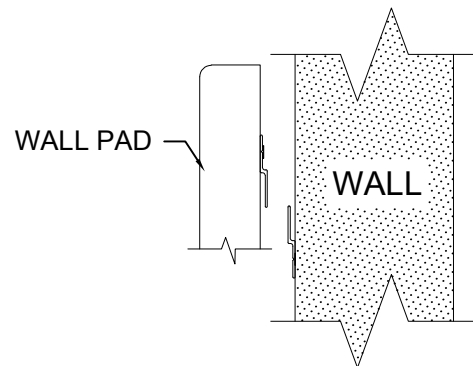
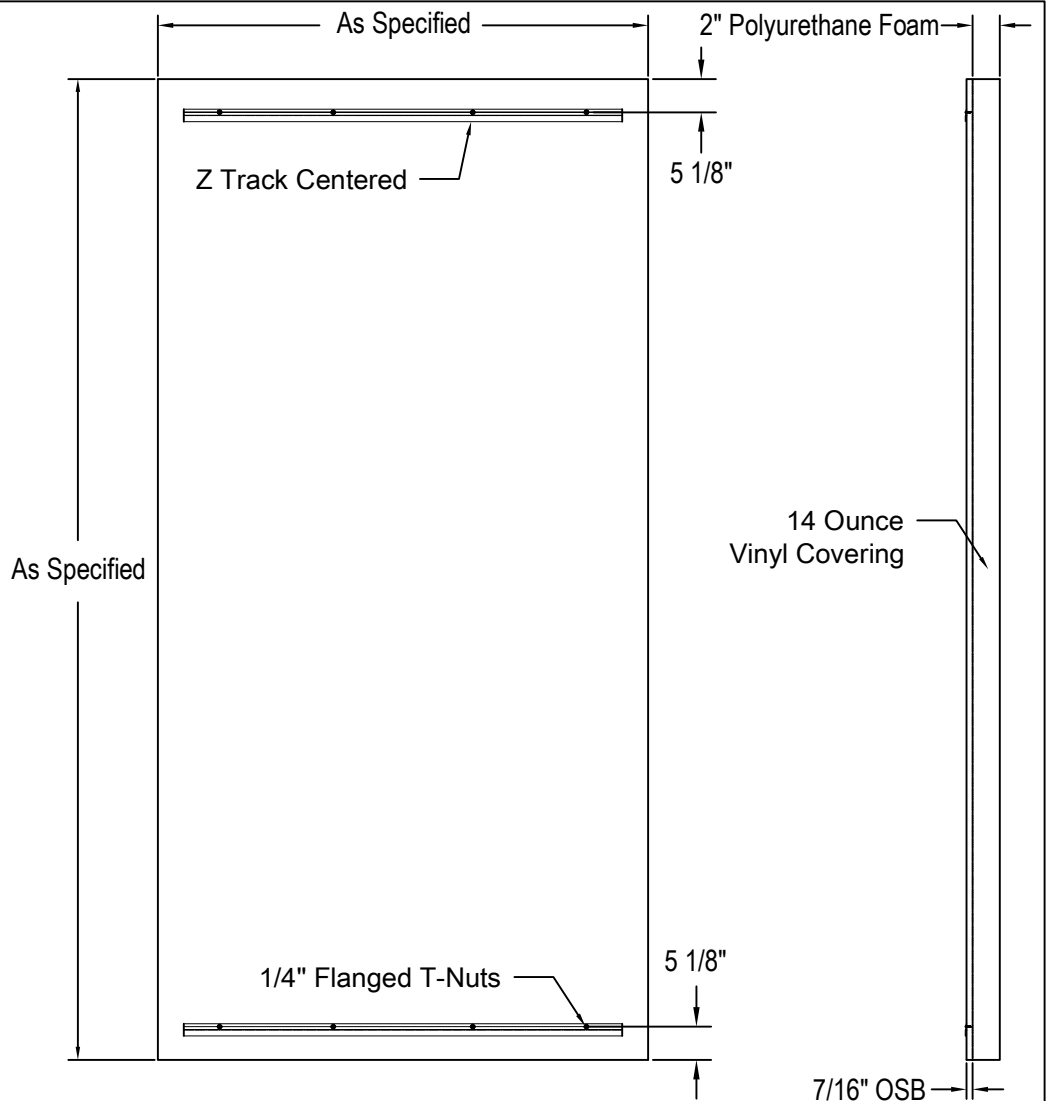
Upgrade any wood backed wall padding to add a fire retardant coating to the 7/16" OSB backing to meet local codes or project specifications.

COLOR SELECTION

Select desired pad color from:

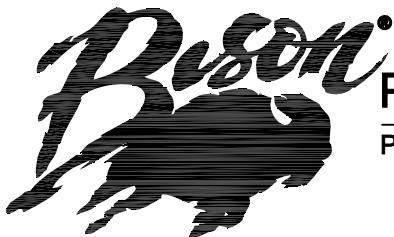
(www.ipibybison.com/pdfs/vinyl_padding_colors_ipi.pdf)

Specify Color: _____



Protector™ Wall Padding Specifications

Solid color Protector wall padding including custom corner, column, door and stage padding is constructed of polyurethane foam with an Indentation Load Deflection (ILD) of 43-53 lbs. per 50 cubic inches and 1.50 pounds per cubic foot density per ASTM Tests B1 and A. Foam conforms to California Fire Code TIB 117:2013 Section 3 and FMVSS 302. Foam also conforms to ISO 20743:2007 Antibacterial and AATCC 30 Antifungal Standards. 14 ounce vinyl covering has a ASTM D2261 tear strength of 92 x 83 pounds per inch and has been treated for mildew and UV protection. Vinyl conforms to NFPA-701 CSFM and Class A ASTM E-84. Wood backed padding is mounted on 7/16" OSB composite board with the foam attached to the OSB with water based adhesive.



PRODUCT SPECIFICATION: WP2USZW

PROTECTOR SOLID COLOR HIDDEN Z TRACK WALL PADDING

REVISED 08/18/2021