

## Padding Upgrade Options

### WPUP3U

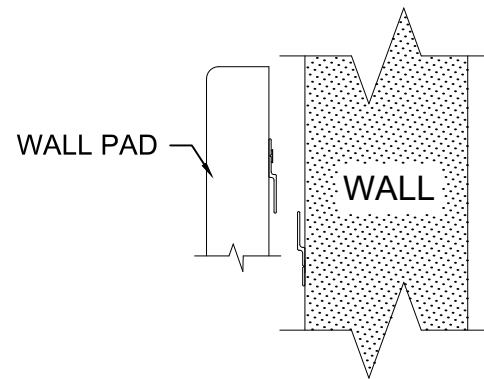
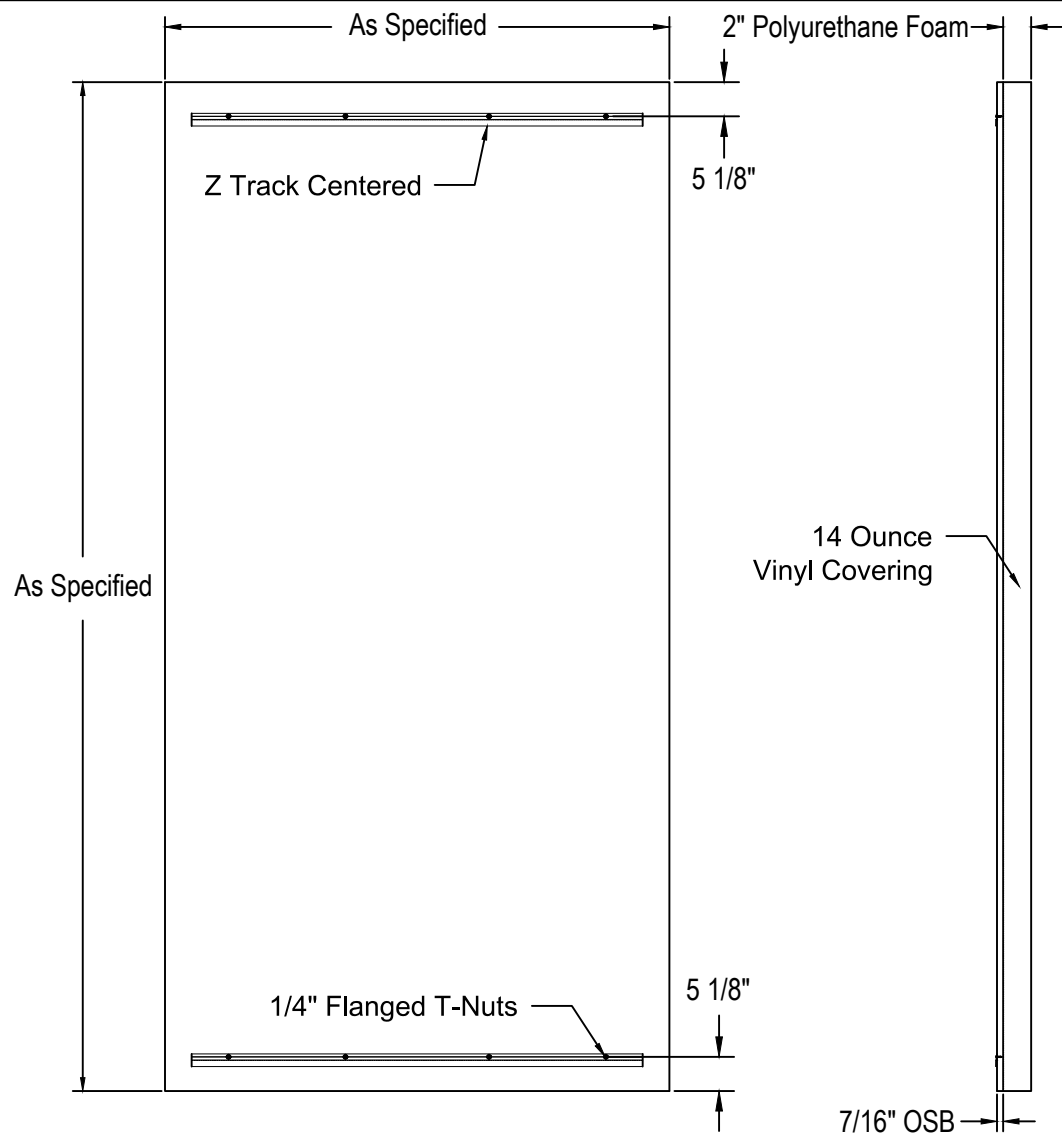
Upgrade any 2" polyurethane foam wall padding to 3" polyurethane foam for added player protection or to meet local codes or project specifications.

### WPUP2HD

Upgrade any 2" polyurethane foam wall padding to 2" high density foam for added player protection or to meet local codes or project specifications.

### WPUPFRC

Upgrade any wood backed wall padding to add a fire retardant coating to the 7/16" OSB backing to meet local codes or project specifications.



## Protector™ Wall Padding Specifications

Full color graphic Protector wall padding including custom corner, column, door and stage padding is constructed of polyurethane foam with an Indentation Load Deflection (ILD) of 43-53 lbs. per 50 cubic inches and 1.50 pounds per cubic foot density per ASTM Tests B1 and A. Foam conforms to California Fire Code TIB 117:2013 Section 3 and FMVSS 302. Foam also conforms to ISO 20743:2007 Antibacterial and AATCC 30 Antifungal Standards. 14 ounce vinyl covering has a ASTM D2261 tear strength of 92 x 83 pounds per inch and has been treated for mildew and UV protection. Vinyl conforms to NFPA-701 CSFM and Class A ASTM E-84. Wood backed padding is mounted on 7/16" OSB composite board with the foam attached to the OSB with water based adhesive.



**PRODUCT SPECIFICATION: WP2UGZW**

PROTECTOR GRAPHIC HIDDEN Z TRACK WALL PADDING

REVISED 07/02/19