

## Padding Upgrade Options

### WPUP3N

Upgrade any 2" neoprene foam wall padding to 3" neoprene foam for added player protection or to meet local codes or project specifications.

### WPUPFRC

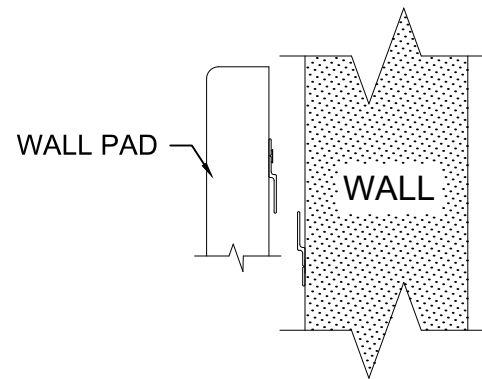
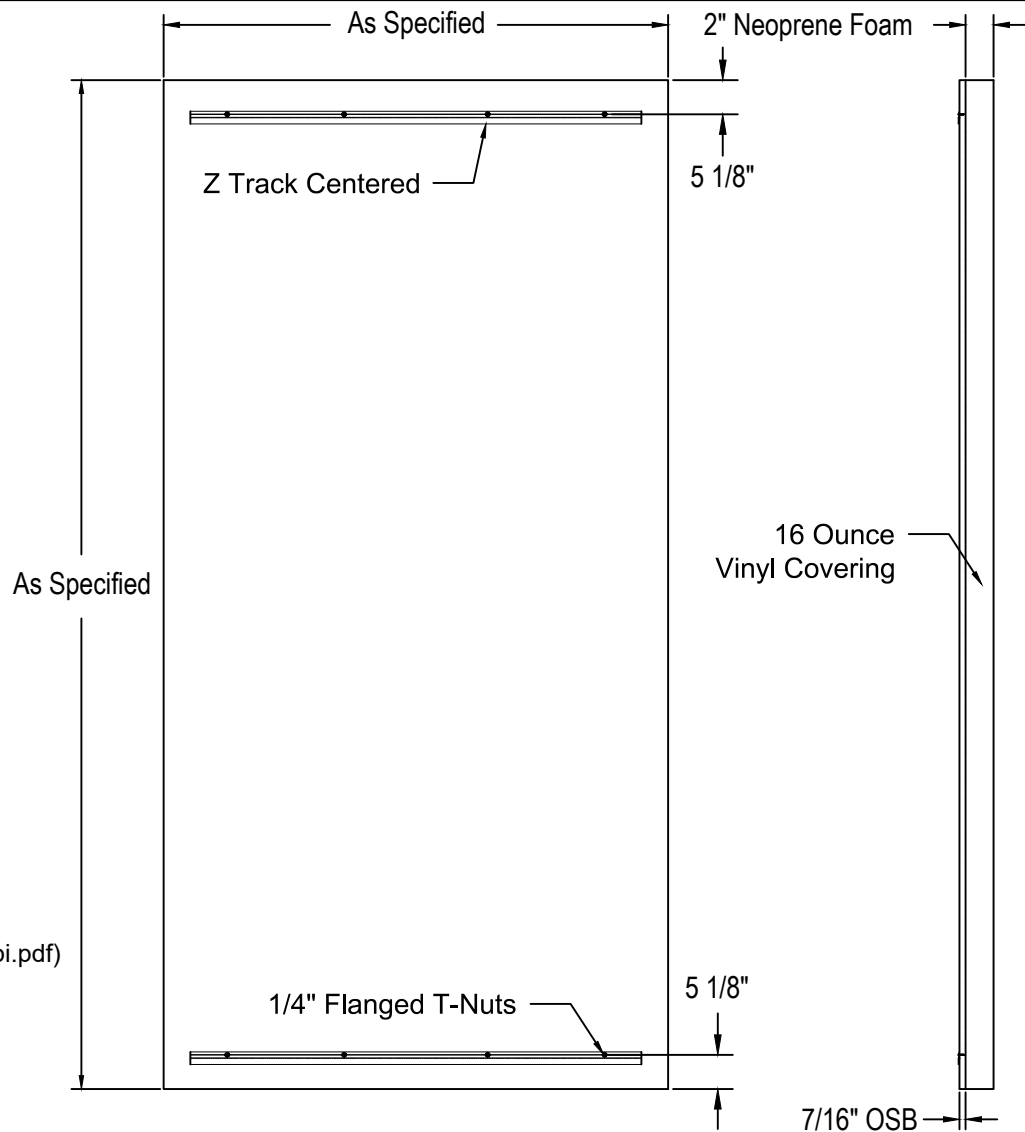
Upgrade any wood backed wall padding to add a fire retardant coating to the 7/16" OSB backing to meet local codes or project specifications.

### COLOR SELECTION

Select desired pad color from:

([www.ipibybison.com/pdfs/vinyl\\_padding\\_colors\\_ipi.pdf](http://www.ipibybison.com/pdfs/vinyl_padding_colors_ipi.pdf))

Specify Color: \_\_\_\_\_



## Firewall™ Wall Padding Specifications

Solid color Firewall padding including custom corner, column, door and stage padding is constructed of neoprene foam with Indentation Load Deflection (ILD) of 25-45 pounds, 2" thickness at 25% deflection per ASTM D3574 Test B1 and a density of 6.2 pounds per cubic foot per ASTM D3574 Test A. Firewall neoprene foam passes California Fire Code TIB 117:2013. 16 ounce vinyl covering has a ASTM D2261 tear strength of 92 x 83 pounds per inch and has been treated for mildew and UV protection. Vinyl conforms to NFPA-701 CSFM and Class A ASTM E-84. Wood backed padding is mounted on 7/16" OSB composite board with the foam attached to the OSB with water based adhesive. Assembled padding has been tested and meets NFPA 286.



**PRODUCT SPECIFICATION: WP2NSZW**

**FIREWALL SOLID COLOR HIDDEN Z TRACK WALL PADDING**

REVISED 07/02/19