

— Instruction Manual —
BISON FOOTBALL UPRIGHT EXTENSION
1 PAIR OF UPRIGHT EXTENSIONS



Customer Service
 (800) 247-7668

FB10EXT-SY, FB10EXT-WT

PARTS LIST					
Item	Qty	Description	Item	Qty	Description
B	4	Extension Adaptor	C	32	Spring Pins
D	4	10' Uprights Extensions			

- ◆ Inspect all contents prior to installation. Report any missing parts to dealer immediately.
- ◆ Read all instructions before proceeding.

Caution!

Before drilling the uprights, clamp a straight edge along the upright assembly to ensure the assembly remains straight. Any variance and/or out of alignment, will be magnified once rotated to their upright position.

1. Place the *10' Upright Extensions* (D) on a flat surface, insert *Extension Adaptor* (B) into one end making sure the flange is flush with the *10' upright extensions* (D). Position the other upright onto the exposed end of *Extension Adapter* (B). Clamp a straight edge along the uprights and the adapter, to insure straightness during the drilling process. See Figure 1

2. Drill through entire assembly with 1/4" drill bit approximately 1" down from the bottom of the flange. Drive one of the *Spring Pins* (C) into the hole flush with the outside of the upright. Rotate the assembly 180 degrees and drive another *Spring Pin* (C) into the exit hole flush with the outside of the upright. Rotate the assembly 90 degrees and drill through the entire assembly once again approximately 3" from the bottom of the flange. Drive a *Spring Pin* (C) into the hole flush with the outside of the upright. Rotate the assembly 180 degrees and drive another *Spring Pin* (C) into the exit hole flush with the outside of the upright. Measuring from the top of the flange, repeat drilling process from above, and install *Spring Pins* (C). See Figure 1.

3. Continue with instruction #8 in your Goal Post instruction to complete goal assembly.

Notice!

Make sure 10' extension is at the top of the upright when installing into crossbar.

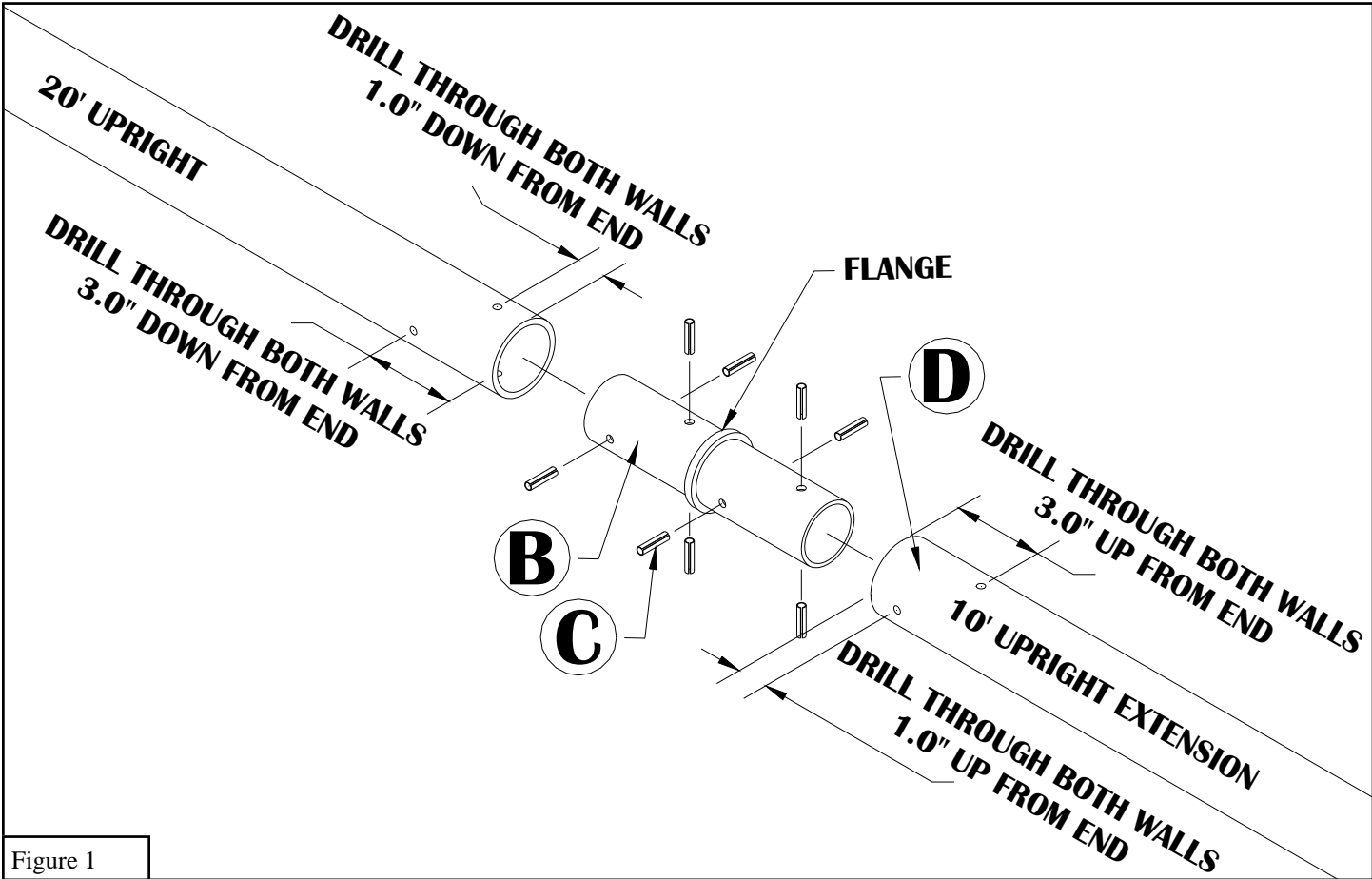


Figure 1