



SPECIAL LEADLESS COLOURED GLAZES READY TO USE AND IN POWDER FORM "EESP" SERIES

The Series consists of 30 Special glazes of different types: Series Reactive, Jasper, Sand and Stone effect, totally free of lead. These glazes are prepared in aqueous suspension and ready for use or in powder form. The result will vary depending on the red or white clay used due to its reactive basis.

The firing recommended temperature is 980°-1080°C nevertheless the maximum temperatures that they support are in the following table:

REFERENCE	1150°C	1260°C	REFERENCE	1150°C	1260°C
EESP-01 JASPER BLACK	YES	YES	EESP-13 BROWN REAC	CHANGES	CHANGES
EESP-02 JASPER MUSTARD	YES	YES	EESP-14 BLACK REAC	CHANGES	CHANGES
EESP-03 JASPER BLUE	YES	YES	EESP-16 GREEN REAC	CHANGES	CHANGES
EESP-04 JASPER RED	YES	YES	EESP-17 WHITE REAC	YES	YES
EESP-05 JASPER ANTHRACITE	YES	YES	EESP-20 ANTHRACITE STONE	NO	YES
EESP-18 NEUTRAL JASPER	YES	YES	EESP-21 SAND STONE	CHANGES	CHANGES
EESP-06 YELLOW SAND	YES	YES	EESP-22 BROWN STONE	CHANGES	CHANGES
EESP-07 LEATHER SAND	YES	YES	EESP-23 BEIGE STONE	NO	NO
EESP-08 ORANGE SAND	YES	YES	EESP-24 GREEN STONE	CHANGES	CHANGES
EESP-09 GREEN SAND	YES	YES	EESP-25 GREEN SPECK	YES	YES
EESP-12 RED REAC	NO	NO	EESP-26 BLUE SPECK	YES	YES
EESP-15 SALMON REAC	CHANGES	CHANGES	EESP-27 BROWN SPECK	YES	YES
EESP-19 STONE GREY	YES	NO	EESP-28 WHITE SPECK	YES	YES
EESP-10 BLUE REAC	YES	YES	EESP-29 BEIGE SPECK	YES	YES
EESP-11 LILAC REAC	NO	NO	EESP-00 CRACKLED WHITE	NO	YES

APLICACION:

Ready to use form:

The process of production and the different materials that compose these glazes make that they have the due consistency to be applied by brush on



PRODESCO, S.L.
Aviación, 44
46940-MANISES
VALENCIA
ESPAÑA

E-mail admon@prodesco.es

www.prodesco.es

Teléfono +34 961545588

Fax +34 961533025

biscuit ceramic. The biscuit surfaces will be clean of powder and without grease, because this would create defects during firing which would spoil the glaze. For a correct glazed we will use a flat or round brush, of soft hair. Taking a quantity of glaze, we will apply it on the piece, covering the maximum surface, giving the necessary coat before it dries off. When the first coat is dry, the second is applied in the same way that the first. It will be enough one coat of 1 mm. depending on the porosity of the biscuit. If it was necessary, a third layer would be applied.

Once dry the glaze, the pieces can be managed without the glaze jumps.

Keep the pots closed to maintain the quality of the glazes, if the glazes dry off it is necessary to add water to be able to continue using them.

Powder form:

It is advisable to adjust the density and viscosity attending to application system (dipping, spraying, and brush) and porosity of the piece. It is recommended that a first test with water / powder ratio of 1: 1 and if necessary to add additives to adjust.



PRODESCO, S.L

PRODUCTORA DE ESMALTES Y COLORANTES CERÁMICOS

Aviación, 44. Manises (Valencia) ESPAÑA

www.prodesco.es

EESP

ESMALTES ESPECIALES
EMAUX SPÉCIAUX
SPECIAL GLAZES

Tª 980°C - 1080°C



EESP-17



EESP-15



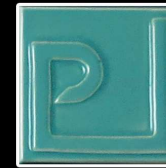
EESP-12



EESP-11



EESP-10



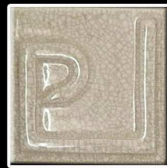
EESP-16



EESP-13



EESP-14



EESP-00



EESP-23



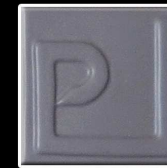
EESP-21



EESP-24



EESP-22



EESP-19



EESP-20



EESP-28



EESP-29



EESP-27



EESP-25



EESP-26



EESP-18



EESP-02



EESP-04



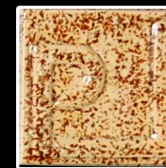
EESP-05



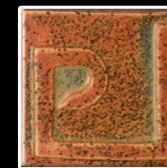
EESP-03



EESP-01



EESP-06



EESP-08



EESP-07



EESP-09



PRODESCO, S.L

PRODUCTORA DE ESMALTES Y COLORANTES CERAMICOS

Aviación, 44. Manises (Valencia) ESPAÑA

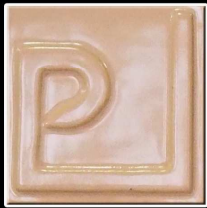
www.prodesco.es

EESP ESMALTES ESPECIALES
ÉMAUX SPÉCIAUX
SPECIAL GLAZES

Tª 1150 °C



EESP-17



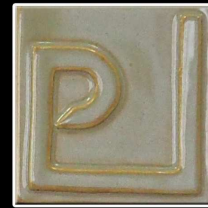
EESP-15



EESP-12



EESP-10



EESP-16



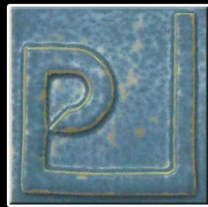
EESP-13



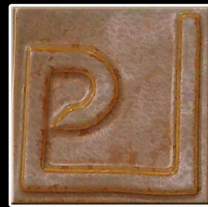
EESP-14



EESP-21



EESP-24



EESP-22



EESP-19



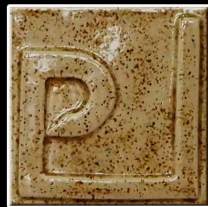
EESP-20



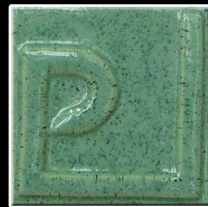
EESP-28



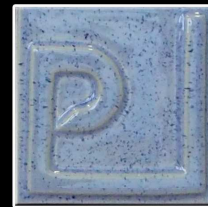
EESP-29



EESP-27



EESP-25



EESP-26



EESP-18



EESP-02



EESP-04



EESP-05



EESP-03



EESP-01



EESP-06



EESP-08



EESP-07



EESP-09



PRODESCO, S.L

PRODUCTORA DE ESMALTES Y COLORANTES CERAMICOS

Aviación, 44. Manises (Valencia) ESPAÑA

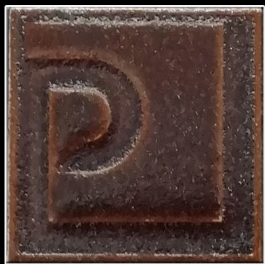
www.prodesco.es

COLECCIÓN EESP Esmaltes efecto
Emaux efect
Effect glaze

T a 1260 °C



EESP-01



EESP-02



EESP-03



EESP-04



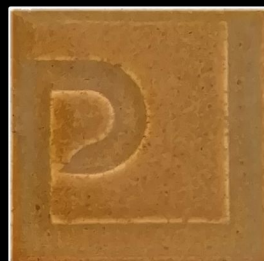
EESP-05



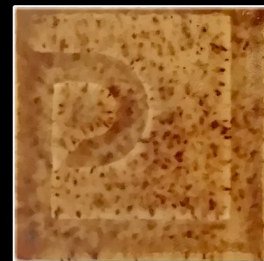
EESP-06



EESP-07



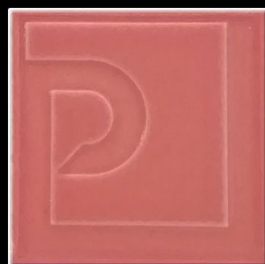
EESP-08



EESP-09



EESP-10



EESP-12



EESP-13



EESP-14



EESP-15



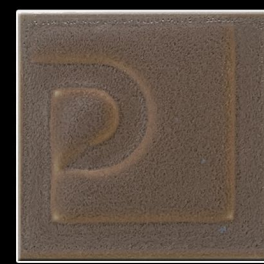
EESP-16



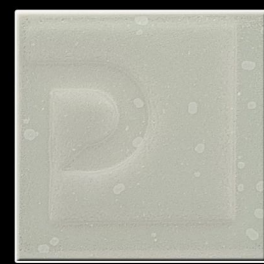
EESP-17



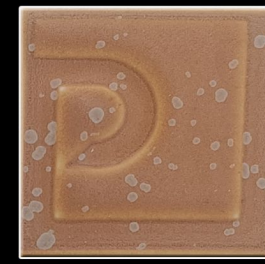
EESP-18



EESP-20



EESP-21



EESP-22



PRODESCO, S.L

PRODUCTORA DE ESMALTES Y COLORANTES CERAMICOS

Aviación, 44. Manises (Valencia) ESPAÑA

www.prodesco.es

COLECCIÓN EESP Esmaltes efecto
Emaux efect
Effect glaze

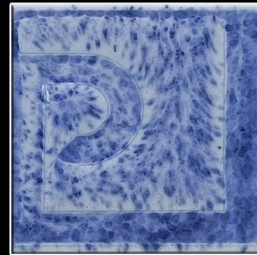
T^a 1260 °C



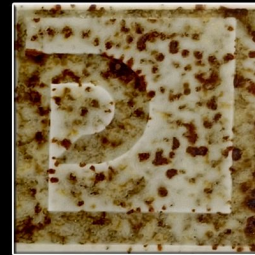
EESP-24



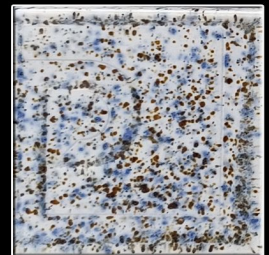
EESP-25



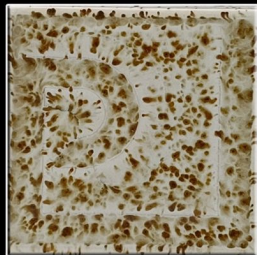
EESP-26



EESP-27



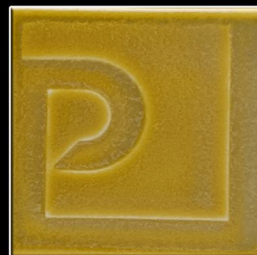
EESP-28



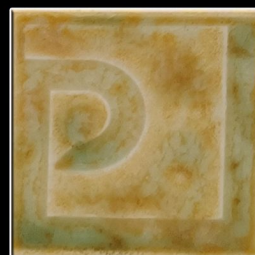
EESP-29



EESP-31



EESP-32



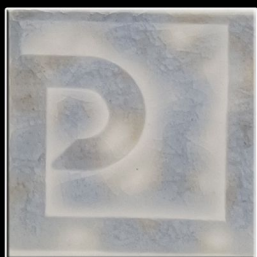
EESP-39



EESP-40



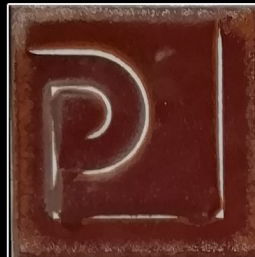
EESP-42



EESP-43



EESP-44



EESP-45



EESP-46



EESP-47



EESP-48



EESP-49