



GROOMING ARM INSTALLATION INSTRUCTION

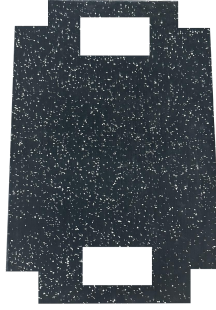
Included in Kit:



Grooming Box



Grooming Arm



Grooming Pad

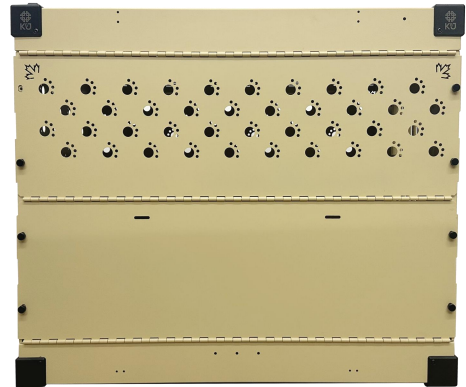


Screw Set

Step 1: Open the grooming box to take out everything



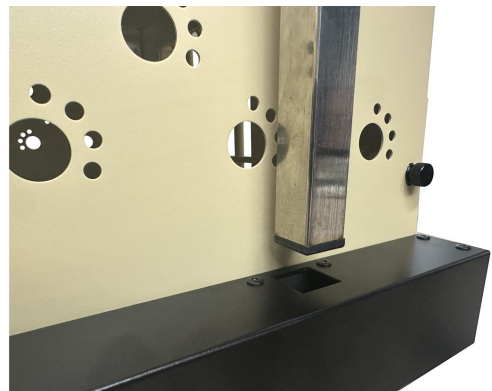
Step 2: Remove one rail from dog crate



Step 3: Install the grooming box on the crate



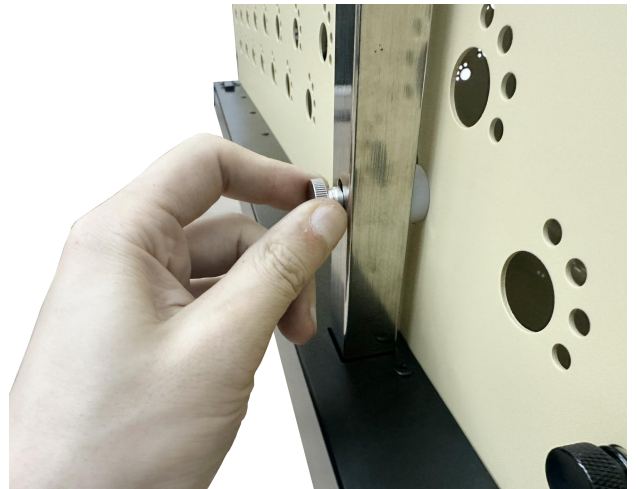
Step 4: Insert the grooming arm into the square hole on the grooming box



Step 5: Use the screw set to connect the grooming arm with crate. hold the white plastic washer with the fingers and insert the screw through the holes on the crate, washer and grooming arm.



Step 6: Screw the second position in the same way



Step 7: Put the grooming pad on the top of the dog crate

