

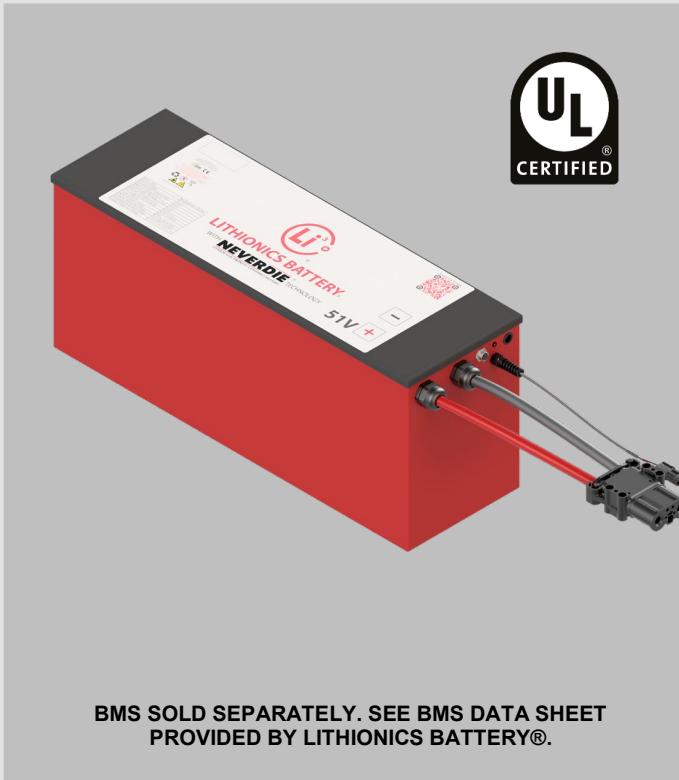
LITHIONICS BATTERY®

LITHIUM-ION IRON PHOSPHATE BATTERY SYSTEMS



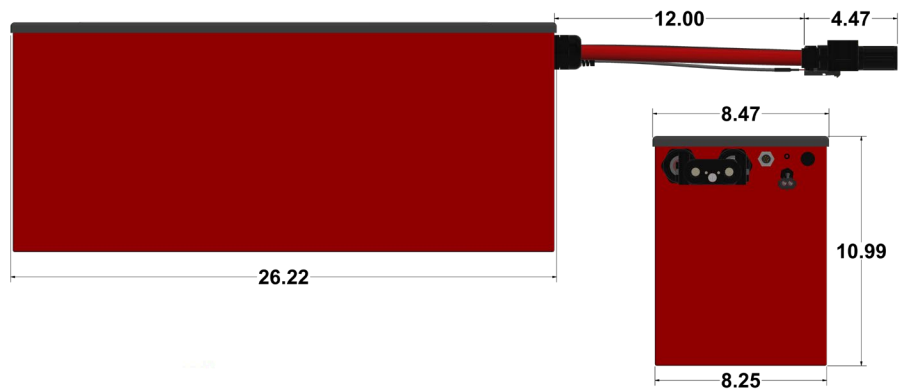
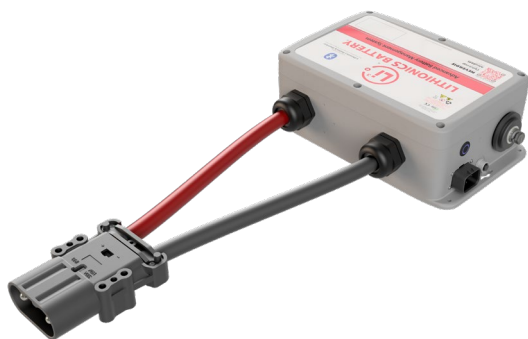
MODEL NUMBER:
GTO51V165A-E2609-DIN-HK

High Energy Density Safe LFP, iONbus® Data Network,
UL Listed Internal Heating System, Fireproof Enclosure,
UL1973: 2022 Listed



Item	Description	
Model	GTO51V165A-E2609-DIN-HK	
Nominal Voltage	51.2V	
Nominal Capacity (Ah)	165Ah	
Nominal Watt Hours	8,448Wh	
Internal Resistance	<7mΩ	
Charge		
Charging temperature range	32F to 140°F (0 to 60°C) OR -4F (-20C) with Heater Kit	
Charge voltage	57.6V	
Recommended float charge voltage(for standby use)	54.4V	
Recommended max charge current*	165A	
Allowed max charge current*	200A	
Discharge		
Discharging temperature range	-22 to 140°F (-30 to 60°C)	
Operating Voltage Range	46.4-57.6V	
Recommended max discharge current*	150A	
Max discharge current*	150A	
Pulse discharge current (1 second)	1500A	
Discharge cut-off voltage	NeverDie® Power Reserve @ 48.0V Low-Voltage Cut-Off @46.4V	
Mechanical Characteristics		
Dimensions		
	Length 26"	
	Width 8.25"	
	Height 10.5"	
Weight	<132lbs	
Mounting Orientation	Upright position only (black lid faces up)	
Ingress Protection	IP66	
Storage		
Storage	< 1 Month -4~95°F (-20~35°C), 45~75%RH	
Temperature &	< 3 Months 14~86°F (-10~30°C), 45~75%RH	
Humidity Range	Recommended storage 59~95°F (15~35°C), 45%RH~75%RH	
Long Term Storage	If the battery needs to be stored for > 3 months the voltage should be 52.8V (50%SOC), and stored at the recommended storage specifications shown above. Additionally, the battery needs at least one charge & discharge cycle every six months.	
Self-discharge rate	Residual capacity	≤3% per month; ≤15% per year
	Reversible capacity	≤1.5%per month; ≤8% per year

* Maximum charging and discharging rates apply depending upon the ambient temperature and duty cycle of the system.



NEVERDIE®

ENERGY

165 AMP HOURS
8448 WATT-HOURS

WARNING

NOTE: CONTACT LITHIONICS BATTERY® FOR A USER INSTALLATION GUIDE & STORAGE PROCEDURES. FOLLOW THE GUIDE TO ENSURE FITNESS OF USE & WARRANTY.

CAUTION! READ ALL INSTRUCTIONS BEFORE INSTALLATION, OPERATION, AND MAINTENANCE OF THIS BATTERY SYSTEM.



51V
GTO
SERIES