

EPSON[®]
EXCEED YOUR VISION

**LABELWORKS PX
LW-PX700**

Faster / Smarter / Easier / Better



**LIFETIME
WARRANTY**



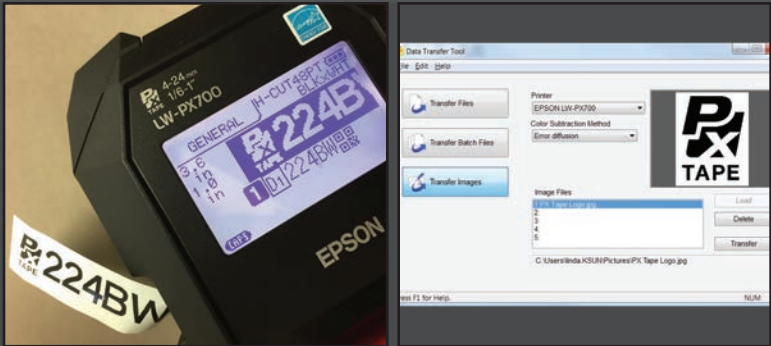
370 SMC Drive, Somerset, WI 54025 • ksun.com • info@ksun.com • 1-800-622-6312



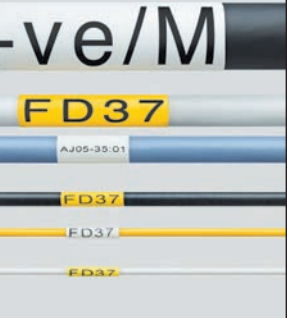
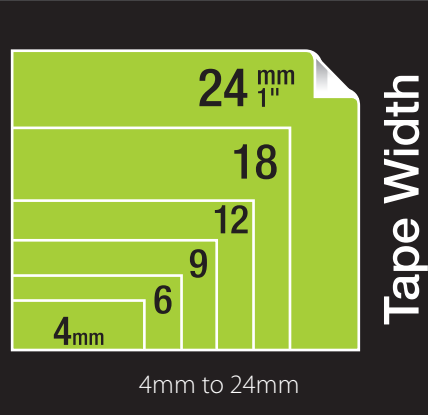


PATCH PANEL

Smarter: Import & Store Images to Printer



Wider Supply Selection



HEAT SHRINK TUBE

Better: Drop-Stop+Pick & Print Function



Prints: Half-cut and full-cut



SELF-LAMINATION

Faster: Hot Keys Cut Data Entry Time



MAGNET TAPE

General ID Labeling

Mixed-Length Label Strip

Self-Lamination Overwrap

Cable Flag

Patch Panel / Block-66 Labels

Punch Block Labels

The central image shows the Epson LW-PX700 printer with a screen displaying 'GENERAL JH-CUTS IPT BLK&WHT' and 'AB01-1:01'. Below the screen are buttons for 'General', 'PBlock', 'PPanel', 'Flag Wrap', 'Mix Len', and 'FacePlate'. The printer is labeled 'EPSON' and 'LW-PX700'.



Better: Label Editor Professional Software



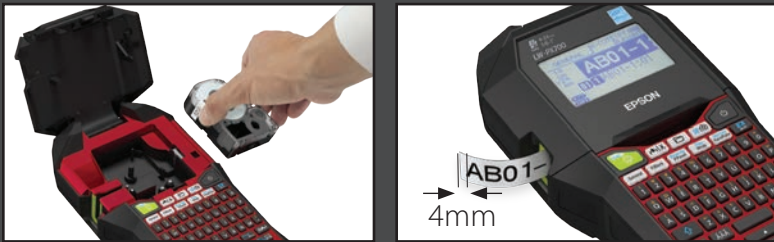
Label Catalog

Import Data (.csv, .txt, .xls, .xlsx, .xlsm)



Cable Labeling

Better: Front-Loading Cartridges & Less Margin Waste



(for standard industrial tapes)

Easier: QWERTY Text Entry



Backlit

Large LCD Screen

Print Preview

LW-PX700 SPECIFICATIONS

| PRINTER | |
|---------------------------------|--|
| Certifications | Energy Star RoHS Compliant |
| Weight | 2.4 lbs w/o battery |
| Size | 136mm x 298mm x 90mm |
| Print-head width | 18.1 mm |
| Printing resolution (dpi) | 180 |
| Max Print Speed | 30mm/sec(AC/ Li-ion battery) |
| Cutter | AUTO/HALF |
| LCD | Monochrome 16 character x 4 line 140 x 80 dot |
| Backlight | Yes |
| Preview | Yes |
| Keyboard Type | QWERTY |
| Tape End Detection | Yes |
| Rechargeable Li-ion Battery | Yes |
| Power Supply | 6AA/ Rechargeable Battery/ AC adaptor |
| Interface | USB |
| Software | Label Editor Professional |
| Support OS | Win |
| Menu Prompt Languages | English, French, Spanish, German, Italian, Dutch, PortugueseX2, Swedish, Finnish, Norwegian, Danish, Turkish |
| External memory | No |
| Wi-Fi / Bluetooth | No |
| File Download | Yes |
| .BMP, .JPG, .PNG Download | Yes |
| ACCESSORIES | |
| Magnet attachment | Yes |
| Rechargeable Li-ion Battery | Yes |
| Hard carrying case | Yes |
| AC adaptor | Yes |
| USB Cable | Yes |
| Tape | Yes(4m)(TBD) |
| SUPPLIES | |
| Tape Width | 4-24mm (1/6" - 1") |
| Die-cut | No |
| HST width | 1/8" (203ST_PX) - 9/16" (214ST_PX) |
| Single-print Lead Margin Length | 4mm (on all standard industrial tapes, and select specialty supplies) |



