

 *brio*
AXIS TRIMMER



Contents

Safety Information	2
Components of your Axis Trimmer	6
Getting Started	8
Charging	8
Best Practices for Optimal Battery Life	9
Using the Axis	10
Trimming Tips	10
Axis Functions	11
Caring for your Axis	12
Recycling your Axis	14
Warranty / Support	15
Troubleshooting	16

Safety Information

IMPORTANT SAFEGUARDS: READ ALL INSTRUCTIONS BEFORE USING

The Axis has been carefully designed to provide the best possible trimming experience. When using electrical products – especially those with blades – basic safety precautions should always be followed.

Reduce the Risk of Electric Shock and Injuries

- Always unplug this product after charging is complete.
- Do not use while bathing / showering.
- Do not place the product where it can fall into water.
- Do not place, drop, or otherwise submerge product in water or other liquid.
- If charger falls into water, unplug immediately and discontinue use.
- Never use charger if the cord or plug are damaged.
- Use this product only for its intended use as described in the manual.
- Do not use accessories, chargers, or attachments that are made by other manufacturers.
- Discontinue use if product is damaged in any way.
- Do not allow any portion of this product to be used as a toy.

- Do not pull or carry by cord, use cord as a handle, or pull cord around sharp edges or corners.
- Keep cord away from heated surfaces.
- Do not unplug by pulling on the cord. To unplug, grasp the plug, not the cord.
- Only connect this product to a properly grounded outlet that is GFCI protected.
- Do not plug into an outlet with a voltage other than 120V.
- Never force the plug into the outlet; Do not attempt to use if it does not easily fit into the outlet.

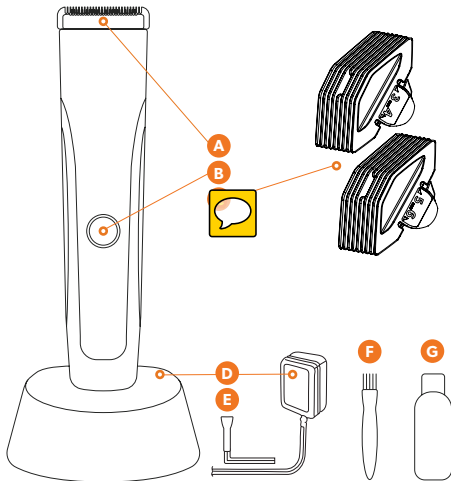


Other Considerations

- This product has the ability to rapidly cut hair and is capable of producing very bad haircuts. Please make sure it is used with care.
- This product is not intended for use by persons with reduced physical, sensory, or mental capabilities or lack of experience or knowledge of this product.
- Children should not be allowed to use the Axis
- Do not use attachments other than those sold by the manufacturer.
- Never place any portion of this product in the dishwasher.
- If the product is dropped, inspect and test for proper operation before use.
- Do not use if blade appears to be cracked or damaged in any way.



Components of your Brilbeardscape



- A Blade Assembly
- B On/Off Button
- C Reversible Clipper Heads
- D Charging Base and Cord
- E USB Plug
- F Cleaning Brush
- G Blade Oil

Getting Started

Charging your Axis

- Plug the charging cord into the base unit and plug the entire unit in to the wall.
- The charging plug can either be plugged into the base unit or directly into the Axis.
- If you are using the cradle base unit set the Axis into the cradle to charge.
- The halo light around the power button will illuminate solid green to indicate the unit is charging. Upon full charge the light will turn off.
- Charge the unit for at least 90 minutes.
- It is normal for the unit to heat slightly during its charge and during use.
- If the battery is low, the Axis can still be used while plugged directly into the wall.
- When battery life is low the halo light around the power button will illuminate orange indicating there is less than 20% battery life left.



Best Practice for Optimal Battery Life

- Don't let your Axis get too hot or too cold.
- Make sure you fully charge the Axis before use.
- It is best to cycle the battery – let the battery run down a little before re-charging. It is not necessary to re-charge after every use.

Using the Brio Axis

Trimming Tips

- Before starting, make sure you have selected the proper guard or, if you are not sure, start with a longer cut height and move to shorter heights as desired.
- To clip the guards on clip the top of the guard over the blade and snap the bottom in to place to secure the guard. The guard should make a snap sound when it is attached properly. Test the connection before use.
- A precise cut may take multiple passes so move the trimmer slowly and take your time.
- In certain areas (like your neck) it may help to use your free hand to pull your skin tight to get the best trim.

Axis Functions

Speed Settings

There is only one speed setting on the Axis trimmer.

Charging Prompts

When the battery is at 20% the halo light around the power button will turn orange – this is the first indication that a charge is needed. When the battery level drops below 10% the light will turn red. While the Axis is actively charging the light will illuminate solid green. At full charge the light will turn off.

Caring for your Brio Axis

Do not rinse your Axis! If you were paying attention in 6th grade science you will remember that oil and water don't mix. Your blade likes oil, not water. If you feel there is too much hair or debris on the trimmer, use the included brush to clean it off. NEVER run the blade under the water.

There is no need to remove the blade for cleaning or oiling. To clean, simply sweep away any hairs with the included maintenance brush. To oil, place one or two small drops of oil on the tips of the cutting surface, run the trimmer for a minute to work in the oil and wipe away any excess with a dry cloth.

If you find you need to remove the blade, use two thumbs on the front of the blade and gently press the blade back – it should pop off easily. To put the blade back on, put the bottom part in first. While pressing down firmly rock the blade assembly toward the top of the clipper. It should click into place. Check the alignment to make sure it is in properly. This takes a little practice but don't worry, it gets easier. If you need a new blade contact Brio at service@brio4life.com to find out how to get one.

Recycling your Brio Axis

If your Axis is no longer working, contact Brio at service@brio4life.com to get a replacement if it is still under warranty. If you need to dispose of the device, please recycle properly as it does contain a battery. The device can be recycled as you would other batteries. For a drop-off location near you check out www.e-stewards.org for a nearby battery recycling location.



Warranty & Support

The Brio Axis is guaranteed to function properly from two years from the date of purchase. Defects due to faulty materials and workmanship will be repaired or replaced at Brio's expense with a qualified receipt. To contact Brio customer service please call 248-268-6530 or email service@brio4life.com For more information on the warranty service process please visit www.brio4life.com/service .

Limitation of Remedies

In no event shall Brio or any of its affiliated companies be liable for any special, incidental or consequential damages based upon breach of warranty, breach of contract, negligence, tort or any other legal theory. Such damages include, without limitation, loss of savings or revenue, loss of profit, loss of use; the claims of third parties including, without limitation, dentists and dental hygienists, and cost of any substitute equipment or services. Some states do not allow the exclusion or limitation of incidental or consequential damages.

Troubleshooting

If you are unable to resolve a problem of any kind based on the information within these instructions please contact Brio customer service at [248-268-6530](tel:248-268-6530) to speak to a representative.



Be a **well** being.