

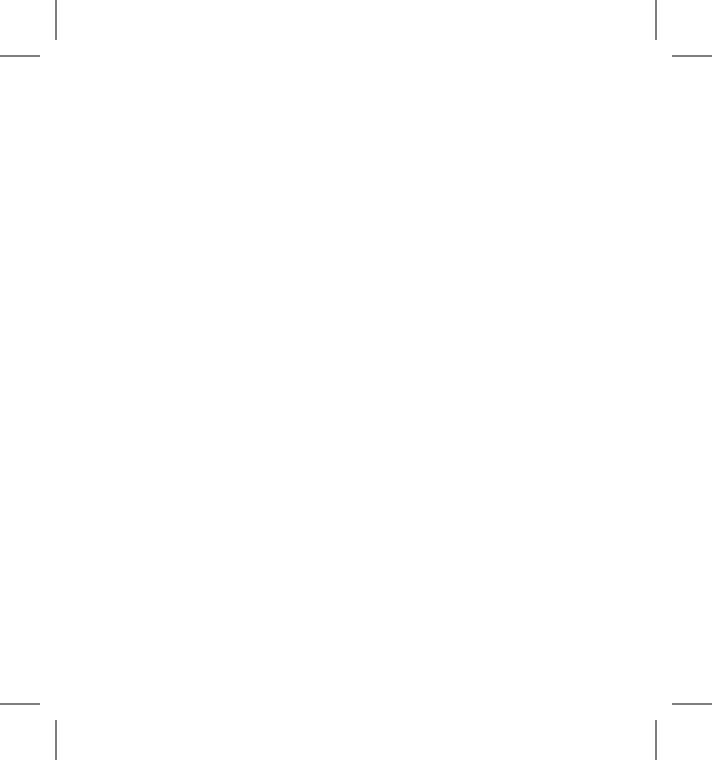


BEARDSCAPE

v2

For the Beard and Beyond





## Contents

---

Safety Information	2
Components of your Beardscape	6
Getting Started	8
Charging	8
Best Practices for Li-ion Batteries	9
Using the Beardscape	10
Trimming Tips	10
LCD Screen Function	12
Caring for your Brio Beardscape	14
Warranty / Support	16
Troubleshooting	17

## **Safety Information**

---

### **IMPORTANT SAFEGUARDS: READ ALL INSTRUCTIONS BEFORE USING**

The Brio Beardscape has been carefully designed to provide the best possible trimming experience. When using electrical products – especially those with blades – basic safety precautions should always be followed.

## **Reduce the Risk of Electric Shock and Injuries**

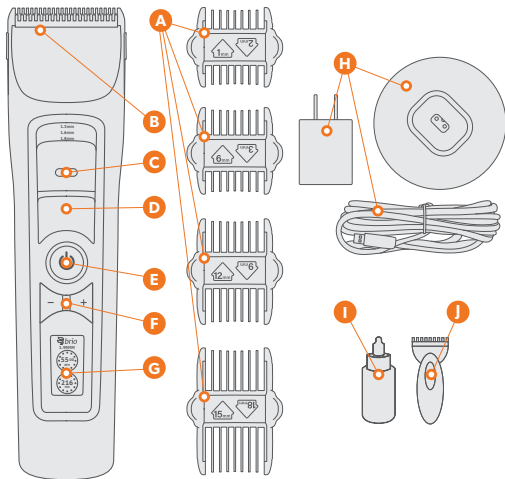
- Always unplug this product after charging is complete.
- Do not use while bathing / showering.
- Do not place the product where it can fall into water.
- Do not place, drop, or otherwise submerge product in water or other liquid.
- If charger falls into water, unplug immediately and discontinue use.
- Never use charger if the cord or plug are damaged.
- Use this product only for its intended use as described in the manual.
- Do not use accessories, chargers, or attachments that are made by other manufacturers.
- Discontinue use if product is damaged in any way.
- Do not allow any portion of this product to be used as a toy.

- Do not pull or carry by cord, use cord as a handle, or pull cord around sharp edges or corners.
- Keep cord away from heated surfaces.
- Do not unplug by pulling on the cord. To unplug, grasp the plug, not the cord.
- Only connect this product to a properly grounded outlet that is GFCI protected.
- Do not plug into an outlet with a voltage other than 120-220V.
- Never force the plug into the outlet; do not attempt use if it does not easily fit into the outlet.

## **Other Considerations**

- This product has the ability to rapidly cut hair and is capable of producing very bad haircuts. Please make sure it is used with care.
- This product is not intended for use by persons with reduced physical, sensory, or mental capabilities or lack of experience or knowledge of this product.
- Children should not be allowed to use the Beardscape.
- Do not use attachments other than those sold by the manufacturer.
- Never place any portion of this product in the dishwasher.
- Never use the charger if the cord or plug are damaged.
- If the product is dropped, inspect and test for proper operation before use.
- Do not use if blade appears to be cracked or damaged in any way.

## Components of your Brio Beardscape





- A** Reversible Trimming Guards
- B** Blade Assembly
- C** Lever Lock Button
- D** Micro Adjust Lever
- E** On/Off Button/Travel Lock
- F** Speed Control
- G** Display
- H** USB Plug/ Charging Base and Cord
- I** Cleaning Brush
- J** Blade Oil

# Getting Started

---

## Charging your Beardscape

- Plug the USB style charger into the transformer and plug into the wall.
- The charging plug can either be connected directly to the bottom of the Beardscape or plugged into the charging cradle.
- If you are using the charging cradle, plug it in and set the Beardscape in, bottom first.
- Make sure the charging bubble icons appear.
- Most Beardscape trimmers come partially to fully charged.
- A complete charge may take up to 3 hours.
- The Beardscape will beep and automatically stop charging when the battery is full.
- If the battery is low, the Beardscape can still be used while plugged directly into the wall.

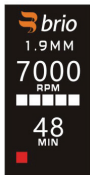
The display will show differing amounts of battery time remaining based on the speed setting of the trimmer. The table below shows how long a fully charged battery will last based on the speed settings.

### **RPM Compared to Expected Life**

5000 RPM – 240 min • 5500 RPM – 225 min • 6000 RPM – 210 min  
6500 RPM – 195 min • 7000 RPM – 180 min

### **Best Practice for Optimal Battery Life**

- Don't let your Beardscape get too hot or too cold.
- Make sure you fully charge the Beardscape before using.
- It is best to cycle the battery - let the battery run down before re-charging - it is not necessary to re-charge after each use.
- It is best to charge the battery when the capacity is less than 20% or when the battery meter has only one red square illuminated, as shown.



# Using the Brio Beardscope

---

## Trimming Tips

- Before starting, make sure you have selected the proper guard or blade height. If you are not sure, start with a longer cut height and move to shorter heights as desired.
- To use the micro-adjust lever, make sure to press down the center lock button before sliding the lever up or down. The lever controls the cutting height from 1.0, 1.3, 1.6 and 1.9mm. The lengths are displayed on the screen just below the Brio logo.
- To clip the guards on, grab the guard in one hand and slide the blade of the trimmer into the top of the guard where the teeth wrap over. Push the blade until it can't go any farther and then snap the trimmer down into the guard. The length guard should lock on to the trimmer and be secure. Test the connection before use.
- For more details on how to attach the guards and remove / replace the blade, view our videos at [www.brio4life.com](http://www.brio4life.com).

- A precise cut may take multiple passes, so move the clipper slowly and take your time.
- In certain areas (like your neck) it may help to use your free hand to pull your skin tight to get the best trim.
- The Beardscape cuts best when the gold part of the rake is pressed flat against your skin.

## Screen Functions

---

To function properly, your Beardscape requires oil.

To oil the trimmer, sweep away any hairs with your included brush, put one or two drops of oil on the tips of the cutting surface (where the white blade meets the gold rake) and run the trimmer for a minute to work in the oil. Wipe away any excess oil with a dry cloth.

Every 60 minutes of operating time the Beardscape will signal that it is time to oil the blade by flashing the oil screen. When you see the oil prompt, please clean and oil your trimmer.

### Travel Lock

Press and hold the power button for 5 seconds to turn on the travel lock.

Press and hold for another 5 seconds to turn off the lock.



## RPM - Speed Control

The Beardscape operates at an RPM range of 5,000-7,000 revolutions per minute. Use the (- +) button to change the speed settings. The high torque motor is designed to maintain the speed setting even when cutting thick or course hair.

## Available Time

The time display shows the amount of cutting time remaining in the charge. As the speed (RPM) is lowered, cutting time increases.



## Charging Prompts

When only 20 minutes of time remain on the trimmer, the charging icon will flash and the Beardscape will make a beep tone, alerting you to **fully** charge the Beardscape after your use.

## Caring for your Brio Beardscape

Do not rinse your Beardscape! If you were paying attention in 6th grade science, you will remember that oil and water don't mix. Your blade likes oil, not water and the body of the trimmer needs to be kept dry at all times. If you feel there is too much hair or debris on the trimmer, use the included brush to clean it off. NEVER run the blade under the water.

To remove your Beardscape blade assembly, make sure the micro-adjust lever is all the way down to the 1.9mm setting. Use two thumbs on the front of the blade and gently press the blade back. It should pop off easily. To put the blade back on, make sure the micro adjust lever is in the lowest position (1.9mm), find the small



black tab on the blade assembly and tuck that into the mouth of the trimmer. Snap the blade into place. Do not line up the black plastic feet with the metal prongs on the inside of the trimmer – this will cause it to jam. Simply tuck the blade assembly into the mouth of the trimmer and snap the blade into place.

Use the micro-adjust lever to check the alignment and make sure the blade is properly in place. This takes a little practice, but don't worry, it gets easier.

If you need a new blade or assistance with removing your blade contact Brio at [support@briopg.com](mailto:support@briopg.com).

## **Recycling your Beardscape**

If your Beardscape is no longer working, contact Brio at [support@briopg.com](mailto:support@briopg.com) to get a replacement if it is still under warranty. If you need to dispose of the device, please recycle properly as it does contain a battery. The device can be recycled as you would other batteries. For a drop-off location near you check out [www.e-stewards.org](http://www.e-stewards.org) for a nearby battery recycling location.

## **Warranty & Support**

The Brio Beardscape is guaranteed to function properly from two years from the date of purchase. Defects due to faulty materials and workmanship will be repaired or replaced at Brio's expense with a qualified receipt.

To contact Brio customer service please call [248-268-6530](tel:248-268-6530) or email [support@briopg.com](mailto:support@briopg.com).

For more information on the warranty service process please visit [www.brio4life.com/pages/warranty-support](http://www.brio4life.com/pages/warranty-support).

## **Limitation of Remedies**

In no event shall Brio or any of its affiliated companies be liable for any special, incidental, or consequential damages based upon breach of warranty, breach of contract, negligence, tort, or any other legal theory. Such damages include, without limitation, loss of savings or revenue, loss of profit, loss of use; the claims of third parties including, without limitation, and cost of any substitute equipment or services. Some states do not allow the exclusion or limitation of incidental or consequential damages.

## **Troubleshooting**

If you are unable to resolve a problem of any kind based on the information within these instructions. Please contact Brio Customer Service at [248-268-6530](tel:248-268-6530) to speak to a representative.



Be a **well** being.