

CE

ACROS 80S/150S

CNC CUTTING TABLE

 **PRITEC**



MANUAL



Table of contents

1. General information	2
1.1 Introduction	2
1.2 How does the process work?	2
1.3 What is G code?	2
1.4 How do I create G-code?	3
2. Safety instructions	3
2.1 Basic principle of safety in the workplace	3
2.2 Basic safety regulations for working with machines	3
2.3 Specific safety regulations for CNC cutting tables	5
2.4 Description of warning stickers	6
3. Accessory checklist	7
4. Technical specifications	8
4.1 Machine specifications	8
4.2 Minimum laptop specifications	8
4.3 Plasma cutter air supply	8
5. Machine assembly	9
5.1 Transport and storage	10
6. Software installation	11
6.1 Installation software for PRITEC ACROS	11
6.2 Installing software to write G-code	17
7. Start-up	17
7.1 Setting the workpiece zero point	18
7.2 Tests	19
9. Torch Height Control (THC)	19
9.1 Settings	19
9.2 Determining THC voltage	21
9.3 THC connection	21
10. Control panel (basic elements)	23
11. Maintenance overview	24
12. Problem detection	24
12.1 The machine does not switch on	24
12.2 Controls not working	24
12.3 Plasma cutter does not cut through the material	24
13. Warranty	24
EC - Declaration of Conformity	26



1. General information

Before using this machine, you must first read and understand the operating instructions completely.

This manual contains important information regarding the proper installation, operation and maintenance of the equipment described herein. There are several risks of injury or property damage associated with the use of any CNC cutting table. Anyone who comes into contact with the installation, maintenance or operation of the CNC cutting table must be fully familiar with the contents of this manual. To protect yourself from personal injury or property damage, follow the following directions and instructions in this manual.

Every PRITEC CNC cutting table is produced in accordance with the Machinery Directive 2006/42/EC. A manual including maintenance overview is supplied with every CNC cutting table. These must be kept and maintained properly.

Because continuous improvements are made to the equipment with a view to quality, PRITEC reserves the right to change specifications of the equipment described in the manual.

1.1 Introduction

This manual will help you get started with using your PRITEC ACROS. Read the manual carefully so that you can make full use of your cutting table and cut the most fantastic products.

1.2 How does the process work?

The table has a control program called Mach3 CNC controller. You can install this program on your laptop by following the steps in this guide. With this program you can 'manually' control the machine with your laptop.

If you want to automatically cut out a workpiece, you can load a G-code into the control program and then let it play back.

1.3 What is G code?

G-code is a command used when programming a CNC program .

This G code is an instruction for the machine. The code has a structure with the letter G, followed by a number, for example G26. The number after the G has a meaning. The numbers 0 to 99 have a fixed meaning that is laid down in an ISO standard. A G-code tells the machine what to do, in what order, with which tools, in which location and at what speed and feed.

Not only G codes are important in a CNC program. M codes are also used. These machine auxiliary codes are as important as the G codes themselves. A G code is used when machining a workpiece, while M codes are used more as a supplement to give the machine additional instructions, for example M03 or M05. These codes are used, among other things, to switch the plasma cutter head on or off. The use of these codes is not the only important thing about a CNC program. The program is largely dependent on coordinates and values that determine the accuracy and correctness of a workpiece.



1. 4 How do I create G-code?

To create G-code you need a program that allows you to create a 2D or 3D file. This file contains the geometry of the workpiece to be cut. In general you can create this with 2D or 3D drawing software. You then need a program to convert the geometry into a G-code that the machine can read. Sometimes both processes can be performed with the same program. Check out our site for the possibilities <https://www.pritec-automation.com>

2. Safety regulations

2.1 Basic principle of safety in the workplace

Most accidents occur because safety regulations are not taken into account or are ignored. Safety equipment such as shields, safety glasses, dust masks, hearing protection, etc. reduce the risk of accidents. But even the best safety measures provide no protection in the event of poor judgment, inattention or carelessness. Pay attention at all times in the workshop and use common sense. If something seems too dangerous, don't try it, but find a safer solution, even if it may take more time. Remember: your personal safety is your own responsibility.

The user of the machine must be sure of the following:

Persons operating the machine have received instructions/training and have been made aware of the dangers and safety regulations.

The safety regulations are complied with and can preferably be read at the workplace. For this reason, the manual is part of the machine and must be kept within easy reach of the machine at all times. When the machine is resold, the manual must be handed over!

2.2 Basic safety regulations for working with machines

1. Make sure you understand this manual before using the machine. Failure to follow this instruction may result in serious personal injury, property damage and/or damage to the machine.
2. Make sure you have read and understood all warnings in this manual and those marked on the machine. Failure to follow these warnings could result in serious personal injury.
3. Replace warning labels when they are no longer readable or have been removed.
4. This machine is designed and intended for use by professionals and experienced staff. If you are not familiar with how to use the machine, do not use it until you have gained sufficient experience and knowledge.
5. Do not use this machine for purposes other than those for which it is intended. If this does happen or if the machine is modified, the warranty will be void and the manufacturer will not be liable for any damage or injury caused as a result.
6. Always use ANSI approved safety glasses or face mask when operating this machine.
7. Do not wear jewelry, loose clothing and/or watches while using the machine, as these can get caught in loose parts. Long hair should be tied back or put in a hairnet. Wearing non-slip footwear or applying anti-slip strips to the floor is recommended.
8. Do not use this machine when you are tired or under the influence of alcohol/medicines/drugs.
9. Check that the main switch is in the 0 position (OFF) before connecting the machine to the power supply.



10. Never use this machine outdoors and never expose it to rain and/or moisture.
11. Never use the machine in a hazardous working environment. Using power tools in damp environments or in the rain can cause electrocution.
12. Make sure the machine is properly grounded.
13. If an extension cord is used, be sure it is in good condition and can handle the power of the machine. An extension cord that is too light can cause power loss and overheating. Refer to the EN 60204-1:2006 standard for the correct size. This depends on the length of the cord and the specifications of the machine.
14. When carrying out repairs or maintenance on the machine, the plug must be disconnected from the power supply.
15. Only use accessories and mountings specified by the manufacturer, the use of other accessories/mountings may cause damage to the machine and/or personal injury.
17. Remove materials, tools, keys, etc. from the machine before putting it into use.
18. Keep safety panels in place at all times when the machine is in use. If these are removed for maintenance work, transport, etc., they must be replaced before the machine is put into use again. Before use, check that all safety panels and/or guards are in place.
19. Do not force the workpiece and/or the machine. This may result in damage to the machine and/or personal injury.
20. If a defect occurs during start-up or use of the machine, the operator must stop the machine and report the defect to the workshop manager or technical service.
21. When the machine is not in use, it must be switched off.
22. Always adhere to the prescribed maintenance and inspection instructions that can be found in the user manual.
23. Make sure the machine is securely secured to a solid, stable surface.
24. Check the machine for defective parts before each use. Before using the machine, check that any damaged part still functions properly and can perform its intended function. Check the alignment of moving parts, connection of moving parts, broken parts, assembly and other phenomena that may affect the operation of the machine. In the event of a defective part or protection panel, the machine must be taken out of use until the relevant part has been repaired or replaced. This may only be done by a recognized company/technician and defective parts may only be replaced with original PRITEC parts, which are available at your PRITEC sales point.
25. Ensure there is sufficient obligation and space around the workplace.
26. Keep the floor around the machine free of sharp materials, oil and grease.
27. Keep visitors at a safe distance from the workplace and keep children away.
28. Make your workshop "child-proof" by using padlocks on the main switches and by removing keys when the machine is not in use.
29. Concentrate your attention completely on your work. Looking around, having conversations, etc. distracts your attention, which can result in serious injuries.
30. Always maintain a steady footing and never overreach to avoid hitting the machine or other moving parts.
31. Never overload the machine. Operate the machine at the correct speed and feed rate. Do not force the machine to perform a task for which it is not intended.
32. Maintain your machine carefully. Keep it clean and replace worn parts for the best and safest performance. Follow the instructions for cleaning, lubricating and replacing parts.
35. Switch off the machine before cleaning it or when carrying out maintenance on the machine. Use a brush or compressed air to remove dust, chips, chips and dirt, not your hands.
36. Do not stand on the machine. If it falls over, serious injury may occur.
37. Never let the machine run unattended. Turn off the power and do not leave the machine until it has come to a complete stop, as this could cause injury to unauthorized persons.
38. Remove loose objects and unnecessary workpieces from the workplace before starting the machine.















2.3 Specific safety regulations for CNC cutting tables

1. Do not use the machine until it has been assembled and installed according to the instructions in this user manual.
2. If you are not familiar with/have never worked with a CNC cutting table before, please first be instructed and/or guided by an experienced/specialized person.
3. Follow all technical requirements and prescribed electrical connections.
4. Use guards and protection at all times and check in advance that they are in place and functioning properly.
5. Keep fingers, hands and arms away from gears and other rotating parts.
6. Avoid unusual controls and hand positions where unexpected slippage could result in contact with the plasma head.
7. Never start the machine with the plasma head against the workpiece.
8. Use an extraction system.
9. Support long or wide workpieces with material supports/roll stands.
10. Disconnect the machine from the power supply before adjusting settings, installing or removing accessories or when maintenance or repairs are carried out on the machine.
11. Disconnect the machine from the power supply and clean the machine and working environment before leaving.
12. We recommend using the following Personal Protective Equipment (PPE): safety shoes, gloves and safety glasses.











2.4 Description of warning stickers


	<p>NOTE: Place the CNC cutting table in a well-ventilated area and on a stable surface. Melting metals can cause unpleasant odors and smoke during cutting.</p>		<p>CAUTION: Disconnect the plug from the socket in case of emergency or short circuit.</p>
	<p>WARNING: HOT, DO NOT TOUCH The plasma cutter head and cut workpieces reach high temperatures during cutting. Make sure everything has cooled down before touching these parts again. Or use the correct gloves and PPE for this.</p>		<p>Safety glasses required</p>
	<p>WARNING: MOVING PARTS Be careful of your fingers and other body parts when the cutting table is in operation. The moving parts of your PRITEC ACROS can potentially cause damage. Do not touch the rotating parts of the cutting table when it is in use.</p>		<p>Safety shoes required</p>
	<p>WARNING: Do not place the cutting table near flammable materials.</p>		<p>Gloves required</p>
	<p>NOTE: Be careful with electrical voltage. The control box is powered with 220 volts AC and the output voltage is 24 volts DC.</p>		<p>Use instructions for use</p>
	<p>WARNING: STAY NEAR THE CNC CUTTING TABLE WHEN IT IS IN USE.</p>		<p>PLEASE NOTE: The emergency stop is mounted on the control box and must be within reach at all times during operation.</p>



3. Accessory checklist

Description	Number	
Power cable	1	
USB cable	1	
Cable guide with S-hook	1	
Cable retention straps	3	
Laptop support 3-piece + 4x M5x16 incl. nut and washer	1	
Cutting strips	22	
Machine leveling feet	4	
Control cable THC controller	1	



Control cable switching plasma cutter on/off	1	
--	---	--

4. Technical specifications

4.1 Machine specifications

	Acros 150S	Acros 80S
Table dimensions (LxWxH)	1880 x 1260 x 1150mm	1200 x 1100 x 1100mm
Total weight	109kg	80kg
Cutting surface	1500 x 1000mm	800 x 1000mm
Cutting range	X-axis: 850mm Y axis: 1415mm Z axis: 65mm	X-axis: 635mm Y axis: 850mm Z axis: 65mm
Power supply	220V ~50hz 360W	220V ~50hz 360W
Work stress	24V DC	24V DC

4.2 Minimum laptop specifications

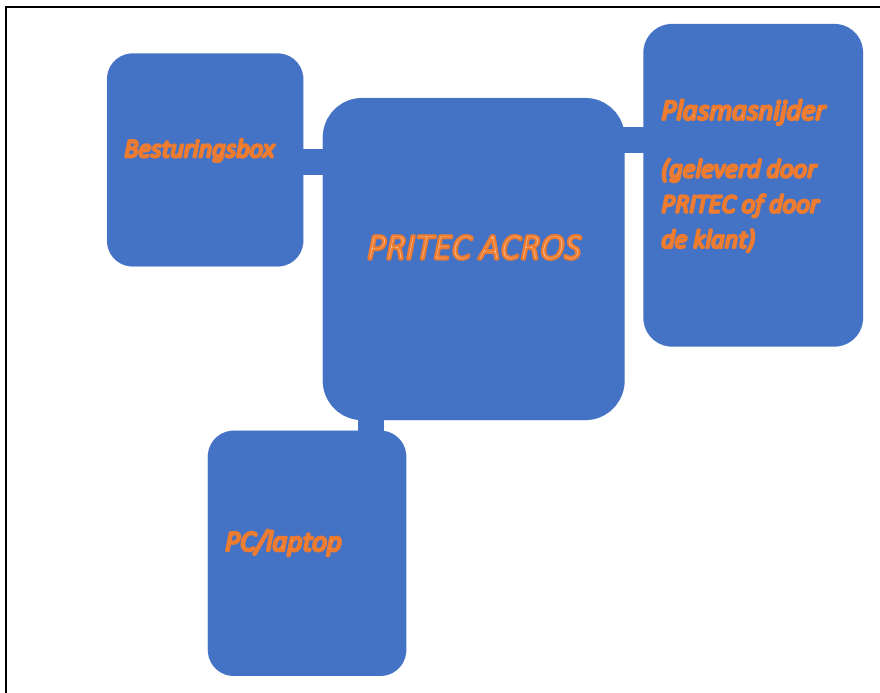
32-bit Version of Windows 2000, Windows XP, Windows Vista, or Windows 7 Operating System
1Ghz CPU .
512MB RAM.
Non-integrated video card with 32MB RAM
1x USB

4.3 Plasma cutter air supply

Consult the plasma cutter manual for air supply requirements. We recommend installing a water separator in the air supply for a better cutting result.



4.4 Machine layout



5. Machine assembly

Tools required for assembly:

- Allen key 3 and 5 mm
- Open-end wrench 13 mm 2x

Follow the instructions of the assembly drawing on the manuals page on our website.

Figuur 1



5.1 Transport and storage

Transporting material

When loading/unloading or transporting the equipment at the workplace, you must use suitable transport and lifting equipment (e.g. crane/forklift, truck). Ensure that components are lifted and transported carefully so that they cannot fall, taking into account package size, weight, center of gravity and fragile parts. Use a forklift or pallet truck to transport the package (figure 1).

When the machine is out of the packaging, use a lifting strap or round sling to transport the machine (figure 2).

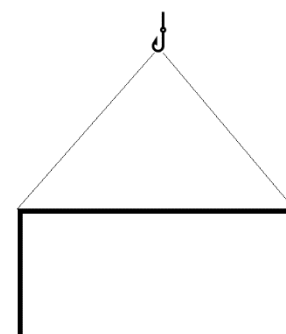
Storage and stacking of packages

Packages containing the machine should be stored in a covered area, out of direct sunlight and low humidity, at a temperature between -10°C and 40°C . Stack a maximum of 3 packages on top of each other.

Unpack

When the machine is delivered, immediately check the package for possible damage due to transport and storage. Check that the contents of the package are complete using the parts list and drawing. In case of damage during transport, the customer must immediately inform the transport company. Packages should be opened with attention to safety, keep a safe distance when opening tires and be careful not to let any parts fall out of the package during opening.

Figuur 2





6. Software installation

For this installation you will need a laptop that has the correct specifications to run the software. (see 4.2 minimum laptop specifications)

After installation, we recommend that you use the laptop's power cable as a power source instead of the laptop battery when operating the ACROS.

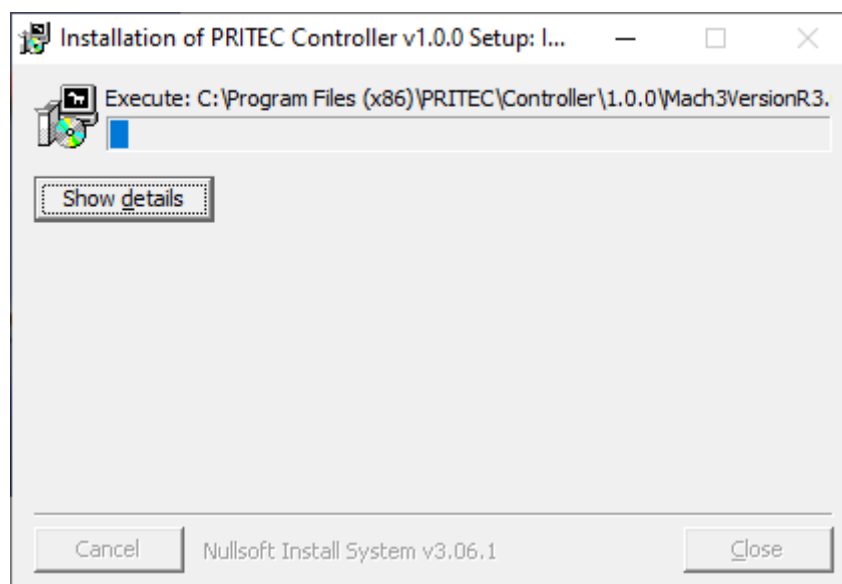
6.1 Installation software for PRITEC ACROS control

Download operating software

The plasma table is controlled by so-called “control software”. The software is freely accessible and easy to download via the website. The latest version of the operating software can be found at <https://pritec-automation.com/pages/downloads>. This page explains where and how you can download the software.

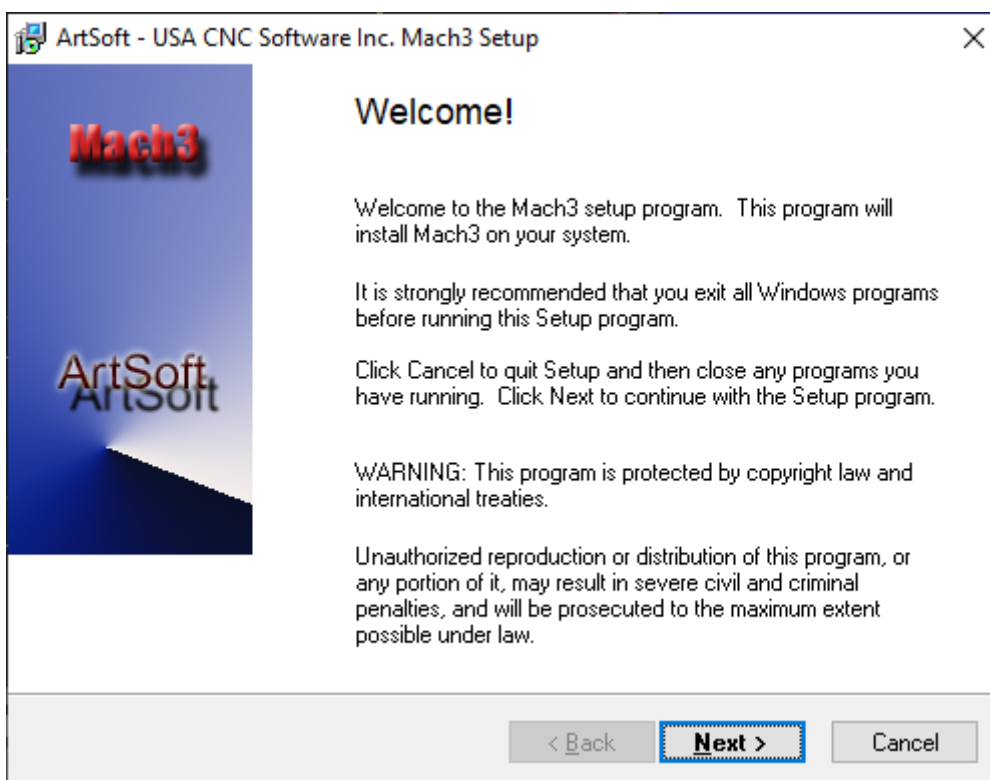
Perform the installation

NB! Windows may ask you to enter an administrator password. This is caused by the installation program that installs a *driver* to establish the connection with the plasma cutting table. This *driver* is important for the functioning of the plasma cutting table and it will not be able to communicate with the computer if it is not installed.



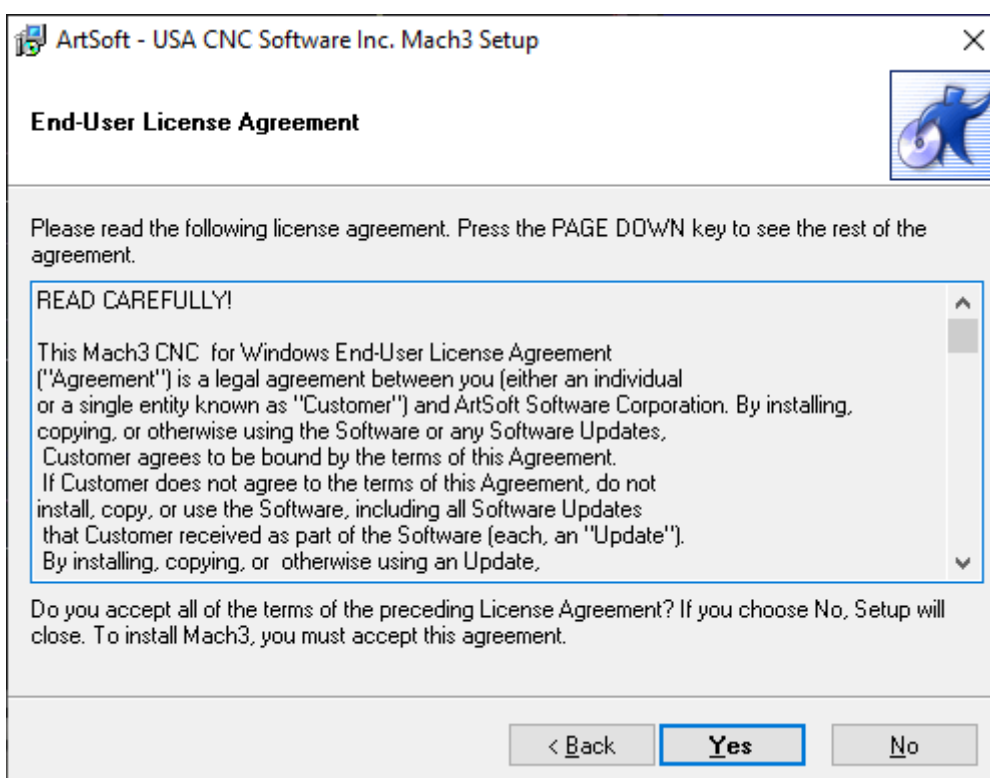
A screenshot of the installer starting up.

After this screen, the installation of the *Mach3* software starts. The installation of *Mach3* must be completed step by step to ensure that the product functions properly.

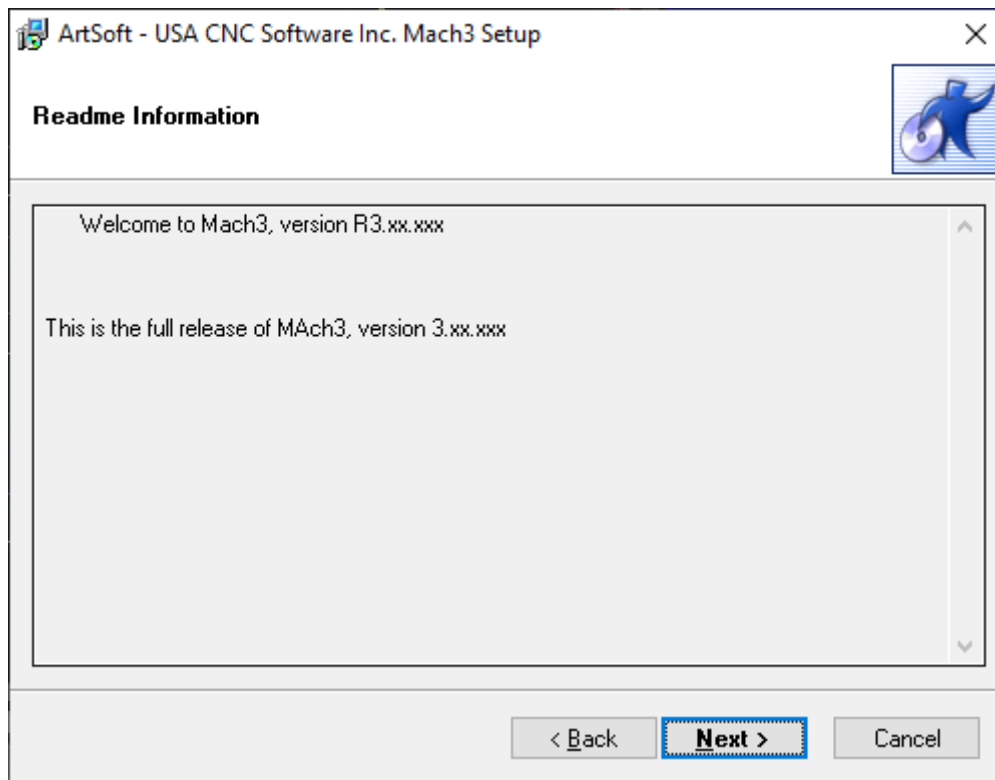


A screenshot of the Mach3 software installation welcome screen.

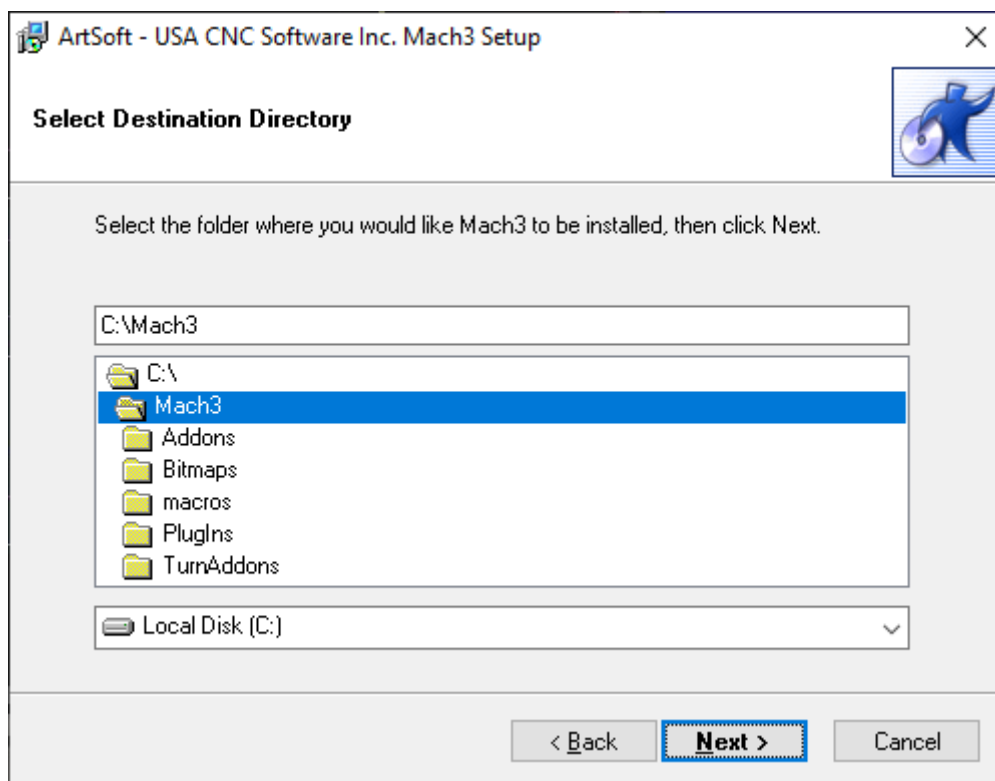
The installer recommends closing all Windows applications before the installation begins. Once this has been done, click **Next** .



Read the following text carefully . Make sure the text is understood and then click **Yes** . If it is not agreed, click **No** .



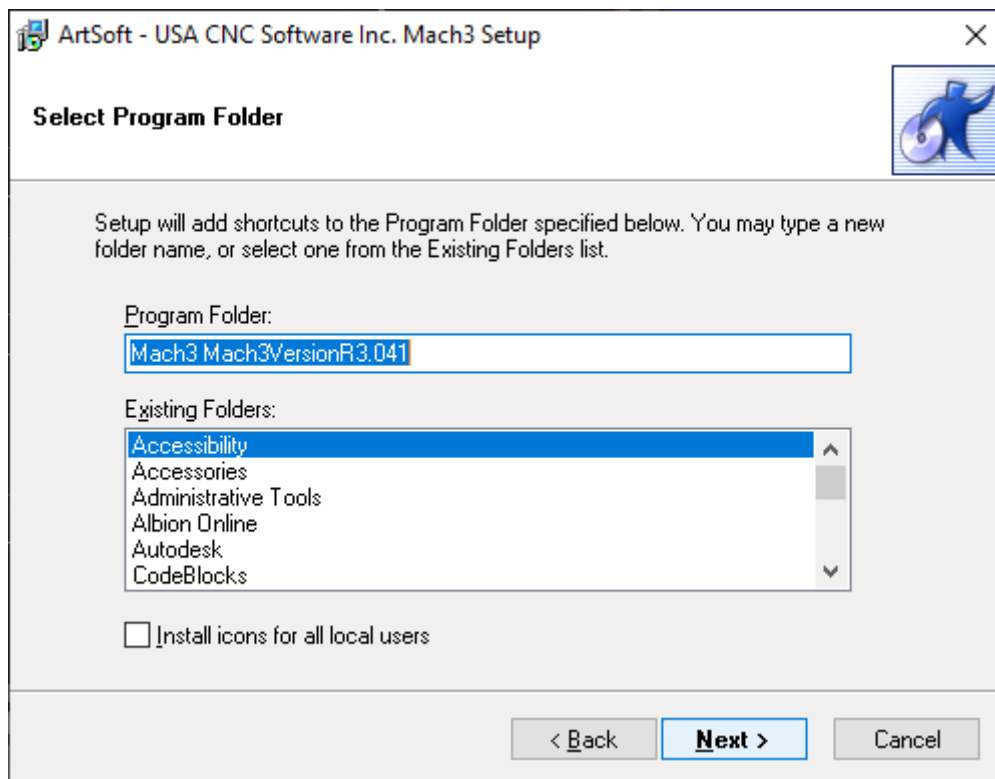
Click **Next** .



Attention ! Make sure that Mach3 is always installed in C:\Mach3 . This is important for the correct installation of the program. This is because the installer assumes that Mach3 is installed in C:\Mach3 to copy the profiles of the machines.

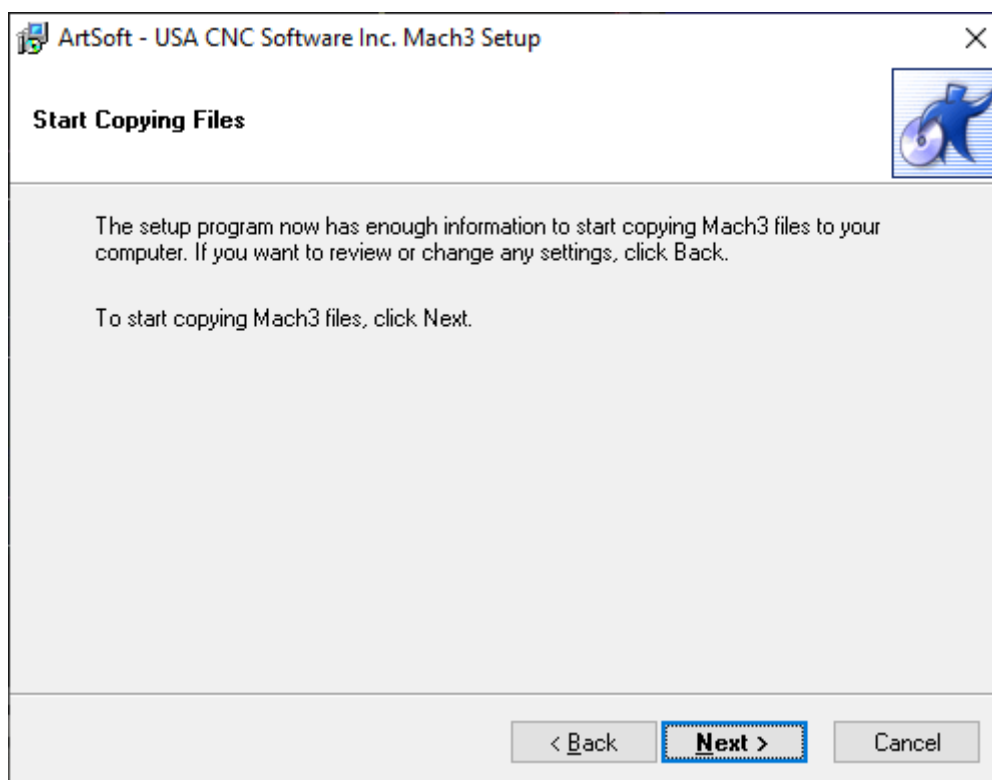


Click **Next** .

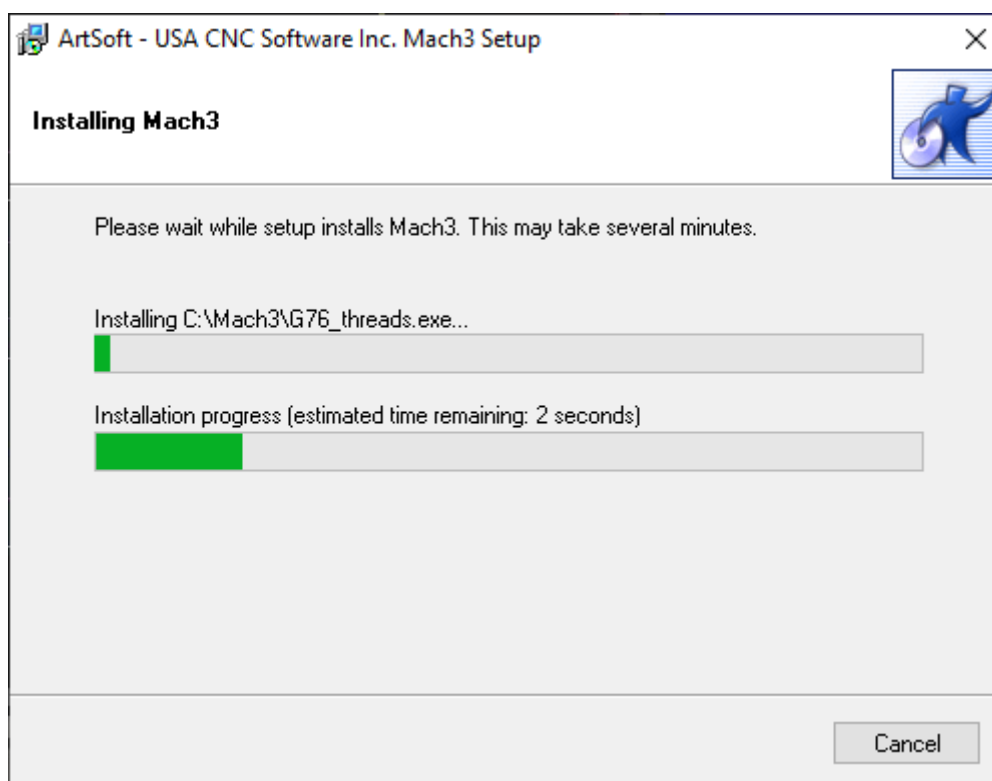


This screen is not important for the installation itself, but can help keep your computer organized. You can enter whatever you want here.

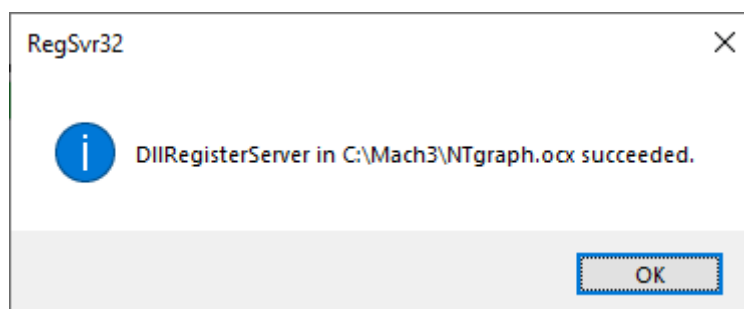
Click **Next** .



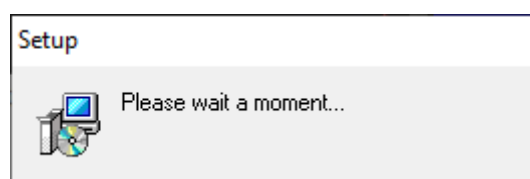
This is the final step before installing the software. Click **Next**.



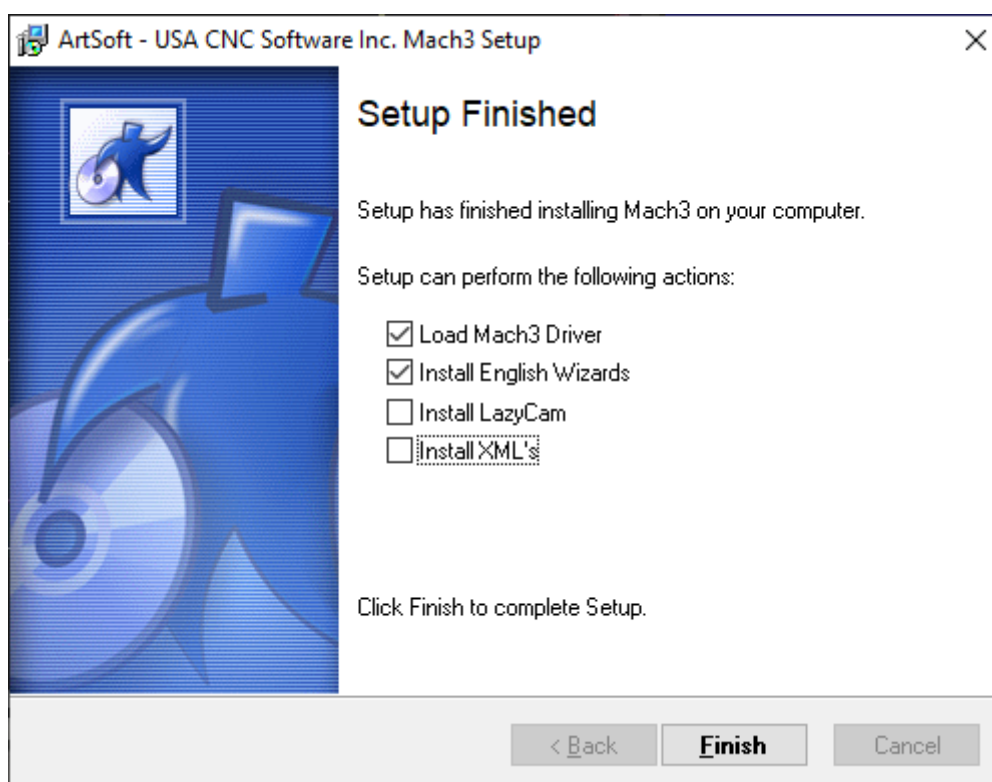
This screen shows which files are being copied. Typically, installation takes no longer than three minutes. Do not close the program if it takes longer.



The installation notes that external components have been successfully installed. Click **OK**.

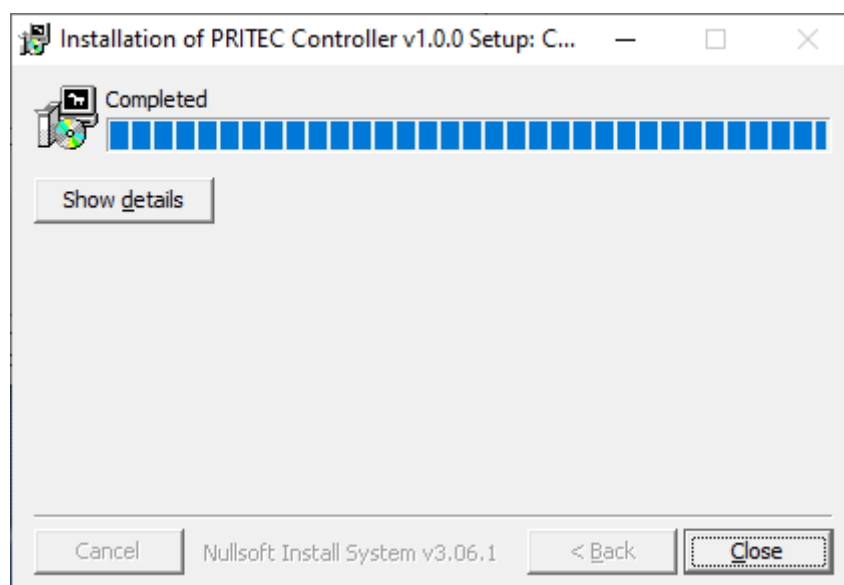
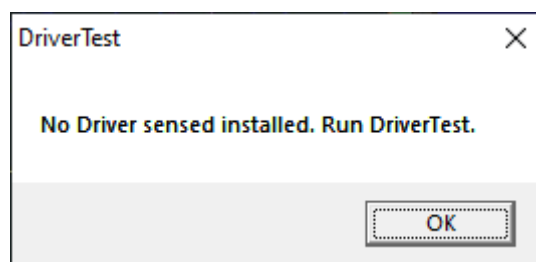


This last screen shows the completion of the installation. After a short moment of patience, you will automatically switch to the next screen.



Mach3 installation is complete! This menu offers the option to install additional components for the program. It has been decided not to install any other profiles (XMLs) that come with the program and LazyCam will not be installed either.

Load Mach3 driver is an option to immediately check whether the table can connect to the computer. If you are just installing the software and the table is not connected to the computer at the time, you will see the following screen. If the table is connected to the computer, the connection is tested.



This final screen confirms the completion of the installation. The profiles have been copied, shortcuts created and the program is ready to use. Click **Close** .

6.2 Installing software to write G-code

Generating a machine code (G-code) can be done using various programs. You may already have the right software for this. If not, look for the options at <https://pritec-automation.com/pages/kennis-artikelen>

7. Start-up

1. Connect the USB cable to the control box and to your laptop.
2. Plug the power cable into the control box and switch on the red switch.
3. Open Mach3 CNC Controller and click on the blue RESET icon after startup. Make sure the emergency stop is turned off. The ACROS can now be operated using the arrow keys on your keyboard (Z = Page Up/Page Down). Use the space key on your keyboard to have the machine automatically return to its home position. The machine will search for the home switches one by one.



7.1 Set workpiece zero point

When you create a g-code, a zero point (reference point) is created. This is the starting point of the process. You can set a zero point at any point on the table.

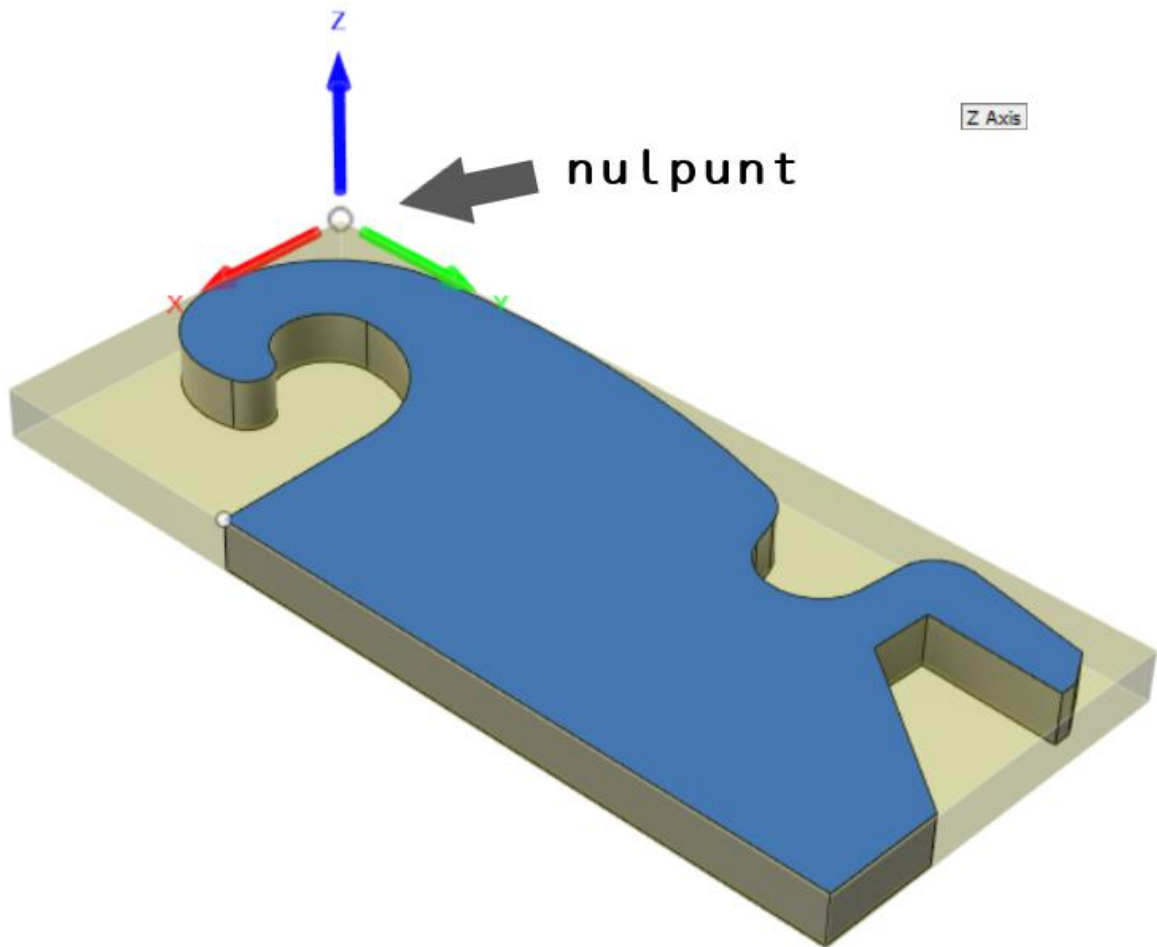


Figure 5 example zero point

1. Control the plasma head to the desired zero point position
2. See figure 4 number 4. Make sure the red LED indicator is turned off so that the zero point coordinates are visible. Not the machine coordinates.
3. Now click on the X,Y and Z ZERO (see figure 4 number 2.) or click on "zero all". All three positions have now switched to zero. The zero point position has now been determined.
4. If you want to return to this position, click on "GO TO XYZ 0" (see figure 4 number 3.)



7 . 2 Testing

NB! Make sure the table is level before you start testing.

1. Make sure the air compressor and plasma cutter are **turned off** .
2. Open a test file from the downloads page on our site.
3. Place a plate on the table.
4. Drive the machine to the desired position where you want to start cutting (see chapter 7.2). Make sure there is enough space. To be on the safe side, steer towards the center of the plate so that there is at least 150 mm available on all sides.
5. "ZERO" the X, Y and Z axis by clicking on the blue icons (the red lamp indication will turn green). "ZERO" is a reference point so that the machine knows its position. You can set this anywhere you want. Make sure that you set this point to the correct position due to the size of the workpiece to be cut out. You must prevent the machine from cutting beyond its table limit.
6. Press the play icon. The machine will now play the G-code file.
7. If this goes without complications, continue with Chapter 9 .

9. Torch Height Control (THC)

The THC works as follows. A voltage is measured between the plus and minus poles of the plasma cutter using the cable that you install from the control box to the plasma cutter. This voltage will change as the voltage of the arc between the plasma head and the workpiece increases or decreases. After this has been set correctly, the THC will respond by turning the Z axis up or down. As a result, the machine will continue to follow any bent plate so that the plasma head does not come into contact with the workpiece. All this ensures a better cutting result.

With thicker plates it is not always necessary to use the THC because it will not warp quickly. If desired, you can then disconnect the THC control cable from the control box, so that the THC controller does not receive any values and will therefore not respond.

For more information go to:

<https://pritec-automation.com/pages/toorts-hoogte-controller>

9.1 Settings

The Prima SD is set with standard factory settings. After proper connection, it can be controlled by most plasma cutters.

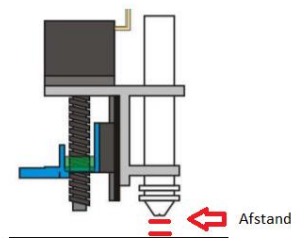
When you switch on the control box, the THC display will show an "animated" "THC" message. Then a flashing voltage value will appear for one second. The controller then undergoes an automatic calibration.



Once the controller is ready for use, three dashes will appear on the display as shown in the third image above.



If you then press and hold the "up/down" arrows simultaneously for a few seconds, you will enter the voltage settings. Changing this value with the arrows controls the height the controller must maintain between the plasma head and the workpiece. If you briefly press the arrows simultaneously again, it will maintain the set value. (see chapter 9.2)



Figuur 3

To change the other parameters if desired, press and hold both buttons until the correct parameter appears on the display. Then release both buttons when the parameter whose values you want to change appears. You can adjust the values using the "up/down" arrows.

The different parameters:



"SPE" (SPEED) - This parameter controls the speed of the Z-axis movement during cutting (clock frequency).



"d-t" (delay time) – delay time. This allows you to set the response time. This concerns the number of seconds the controller must wait after receiving a signal to move the Z axis up or down. This is variable from 0.1 - 9.9 sec. factory setting is 0.5 sec.



"H-V" (High Voltage) – Value of the plasma cutter's no-load voltage. Cutting arc 50-300 V. Default setting is 200 V.



"tSt" (test) – Simulation of controller operation. The system simulates a voltage measurement (up and down) so that its operation can be tested.



"dir" (direction) – Allows the direction of rotation to be reversed when the Z axis is rotating in the wrong direction.

When the plasma cutter is switched on, the THC display shows the measured voltage values.



9.2 Determine THC voltage

As mentioned earlier, you can cut without THC if desired by disconnecting the signal cable.

If you want to work with the THC, the voltage to be set will depend on the cutting speed and the material to be cut (thickness, strength, etc.) .

By going through the following steps you can determine the voltage to be set. If you record the measured values, you only need to measure them once per material type and thickness. This way you can set the THC controller to the noted value the next time.

Option 1

1. Use the PgUp and PgDn keys to set the height of the Z axis at a distance of approximately 2mm. For example, place a 2 mm object between the plasma head and the workpiece (indicated in chapter 9.1 Settings, figure 3).
2. Disconnect the motor cable at the control box from the Z-axis so that the THC controller will not control the Z-axis motor.
3. Set "MODE" to the "INCR" position and click on the "JOG INCREMENTS" to select 100.0000 (100mm) length (in the example below 10.0000 is indicated)



4. Make sure the plasma cutter and air compressor are now on.
5. Press the "TORCH" icon and immediately afterwards press the desired arrow key depending on the direction you want to cut. The plasma cutter will turn on and cut a line.
6. Note the value that appears on the THC controller display during cutting. This is the voltage of the circulating circuit between the plus and minus connections of the plasma cutter.
7. Set this voltage value on the THC controller (indicated in chapter 9.1 Settings).
8. If the cutting speed is not correct, you can adjust it at "FEED" using the "FEED RADE"
9. Reconnect the Z-axis motor cable.

9.3 THC connection

The Prima THC controller has 2 connection options.

1. For plasma cutters with a "voltage divider". This divides the voltage with a ratio of 1:50, resulting in a lower control current voltage from the plasma cutter to the control box (max. 10V DC).
2. For plasma cutters without "voltage divider". These have a direct connection to the plus and minus pole of 1:1 (max. 300V DC)

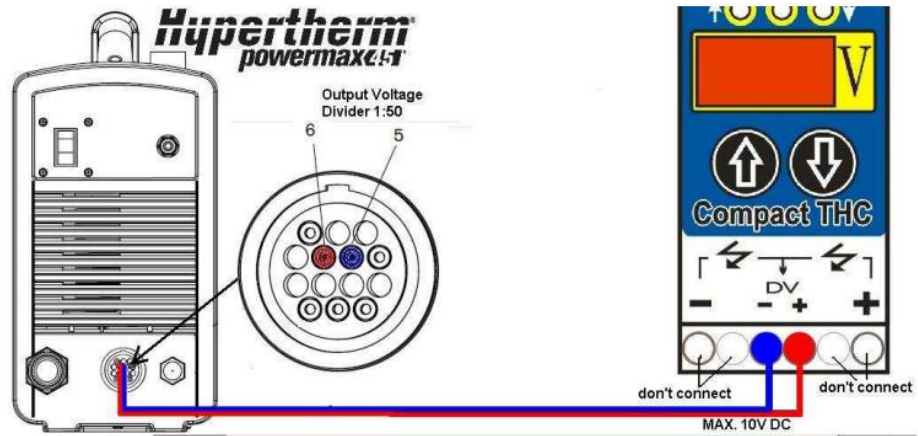
These connection options can be changed in the control box of the Prima controller (see images below). This is supplied from the factory with the correct connection for the ordered plasma cutter. You can check this by looking into the control box from the bottom through the cooling slots.

- **Jasic has a 50:1 "voltage divider" connection.**

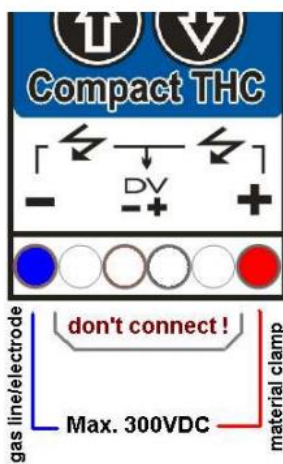


If you connect your own plasma cutter, consult the manual of the relevant machine.

Connection as described in point 1.

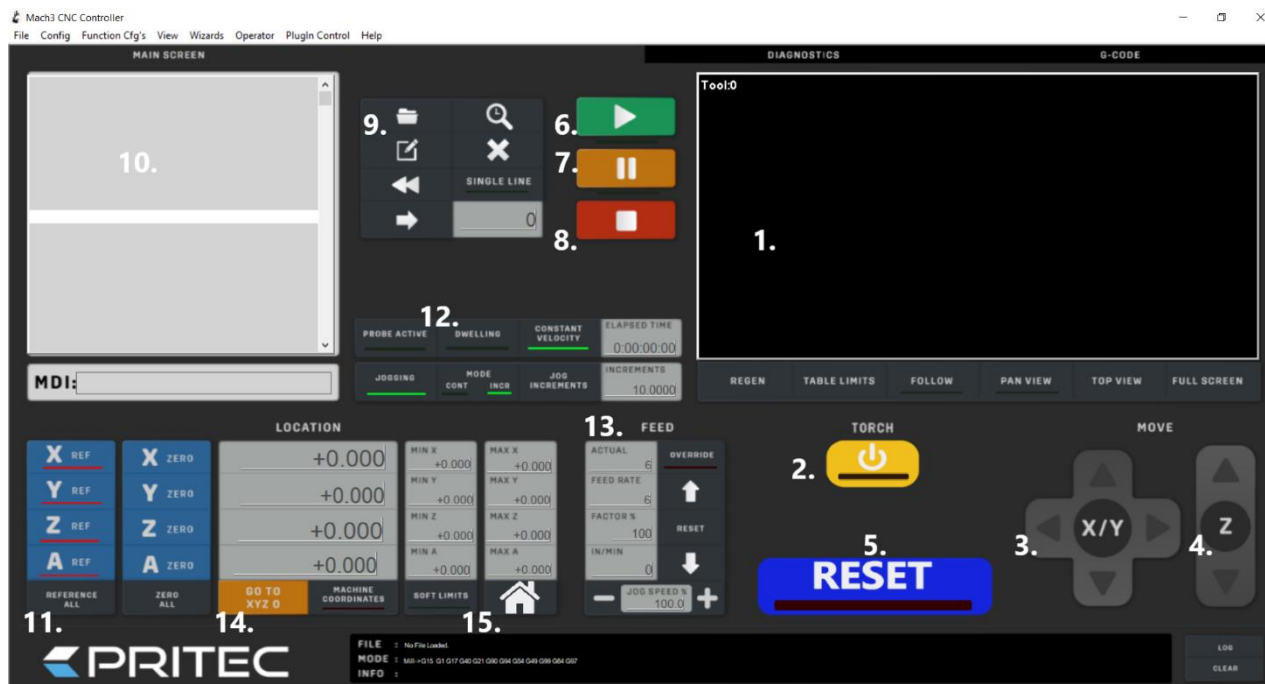


Connection as described in point 2.





10. Control panel (basic elements)



1. **Cutting path display** - This shows the cutting path of the loaded G-code file.
2. **"TORCH" on/off** - This turns the arc of the plasma cutter on and off.
3. **"JOG" controller X/Y** – By clicking on the arrows you can control the X and Y axes.
4. **"JOG" controller Z** – By clicking on the arrows you can control the Z axis.
5. **"RESET"** – To unlock, stop or reset the system.
6. **"PLAY"** – Starts playback of the loaded G-code file.
7. **"PAUSE"** – Allows you to pause the cutting process and then resume it by clicking "play".
8. **"STOP"** – Stops the cutting process. By clicking "play" again, the cutting process starts all over again.
9. **Open G-code file** – This opens the desired G-code file.
10. **G-code display** – The G-code is displayed here line by line.
11. **"HOME"** – This sets the X, Y and Z axes to zero to create a "HOME" point.
12. **"MODE"** – In this menu you can switch between continuous (CONT) and step mode (INCR). When you enable continuous mode, you can control the X, Y or Z axis uninterruptedly. In step mode, the X, Y or Z axis will move to the set "INCREMENTS" value by control.
13. **"FEED"** – Here you can control the speed or manually override it by clicking on the arrows. When you click on the reset button between the arrows, the original set value will appear again.
14. **"SOFT LIMITS"** – When you have determined the "HOME" position of the machine and then enable this function, the machine will not go outside the set table margins.
15. **"GO HOME"** When you have determined the correct "HOME" position, and the soft limits are enabled, by clicking on the icon you can automatically send the machine to its "HOME" position. (as described in 7.1 Homing)



11. Maintenance overview

The following maintenance measures must be carried out on a regular basis:

- Clean and oil the guide rail and rack.
- Oil the guides.
- Remove built-up melt parts from the cutting strips.
- Empty and clean the water container.
- Clean and oil the Z-axis spindle.
- Lubricate the guide blocks.

12. Problem detection

12.1 The machine does not switch on

- Check the power cable of the control box.
- Check whether the control box switch is turned on.
- Check the fuse at the power input of the control box.

12.2 Controls not working

- Check whether the emergency stop is activated.
- When the "soft-limits" are enabled, they may have been reached or the 0/reference point may not have been set correctly.
- Check whether the "FEED RATE" is not set too low.

12.3 Plasma cutter does not cut through the material

If the plasma cutter does not deliver good cutting quality, this may be due to the following causes:

- Check whether the negative connection of the plasma cutter makes good contact with the workpiece to be cut.
- The material is too thick to cut through.
- The distance between the workpiece and the plasma cutter head is too large.
- The cutting speed is too high.
- The plasma cutter amperes are not set correctly.
- The plasma nozzle is worn or incorrect.

For more troubleshooting, visit:

<https://pritec-automation.com/pages/problem-solutions>

13. Warranty

- The warranty comes into effect on the date stated on the purchase invoice and is valid for 12 months.
- The warranty is not transferable without written permission from your supplier.
- Without a purchase invoice, no warranty claim can be made.



- The warranty only applies if the product is used in accordance with the supplied instructions and exclusively for the purpose for which it was designed.
- The warranty does not cover damage caused by incorrect construction, installation, use, cleaning, use of cleaning agents, maintenance or repair.
- No changes may be made to the product.
- The warranty does not apply to improper use.
- Any shipping costs are not covered by the warranty provision
- Repairs must only be carried out by your supplier. Any repair(s) carried out by third parties will void the warranty claim.
- Repair during the warranty period will not extend the validity. However, a three-month warranty on the repair is provided if the regular warranty period expires.
- Any maintenance work to be carried out, described in the instructions for use, must be carried out in a timely manner.
- For warranty you can only contact the sales point where you purchased the item.



EC - Declaration of Conformity

Manufacturer

Trade name

PRITEC

Address data

Kiefteweg 11, 7121 LX Aalten, Netherlands

Product

Product name

PRITEC

Description

CNC cutting table

Model/Serial Numbers

ACROS 80

A CROS 80S

ACROS 150

ACROS 150S

Applied guidelines

2006/42/EC - Machinery Directive

2014/35/EU - Low voltage

Declaration

We hereby declare that the above product (series) complies with the guidelines / standards mentioned in this declaration.

CE responsible:

P. Prinsen

Date:

10-11-2020

PRITEC

Kiefteweg 11

7121 LX Aalten

Phone: +31543722292

Email: info@pritec-automation.com

Website: www.pritec-automation.com

Signature