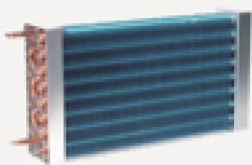




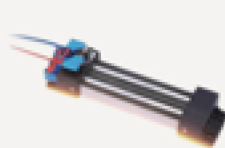
01 Product Features

1. Ultra-Low Temperature: Achieve as low as 12 degrees, surpassing household air conditioners.
2. Precision Control: Meets strict wine storage conditions with $\pm 2^{\circ}\text{C}$ temperature control and $\pm 5\%\text{RH}$ humidity control accuracy.
3. Year-Round Operation: Engineered for 24/7, 365-day uninterrupted operation, ensuring reliability and stability.
4. Silent Design: Low-noise design creates a tranquil environment, enhancing the wine storage experience.
5. Multifunctional: Cooling, heating, dehumidification, and humidification functions for flexible, energy-efficient usage.
6. Premium Components: Internationally renowned brand compressors and components ensure longevity and reliability.
7. Efficient Drainage: Optional high-lift drainage pump effortlessly addresses below-ground wine cellar drainage challenges.
8. Comprehensive Protection: Equipped with temperature/humidity display, fault detection, and safeguards against overload, short circuit, phase loss, and more.

02 Structural Diagram



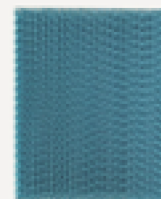
Evaporator



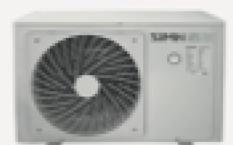
PTC Air Heater



High-Temperature
Protector

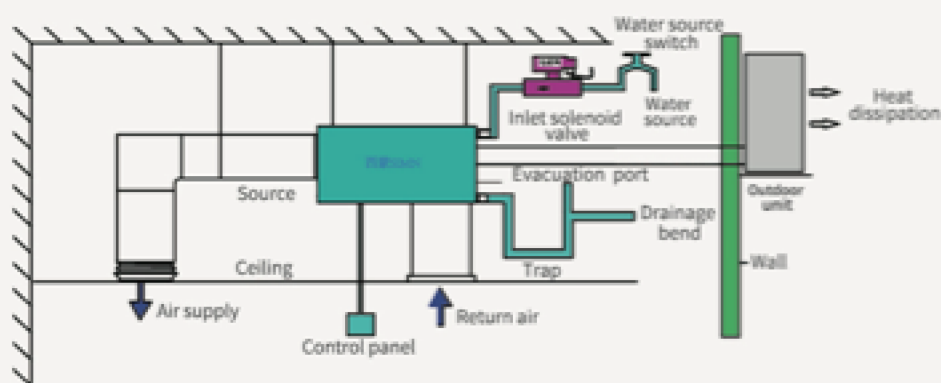


PP Polypropylene
Wet Curtain

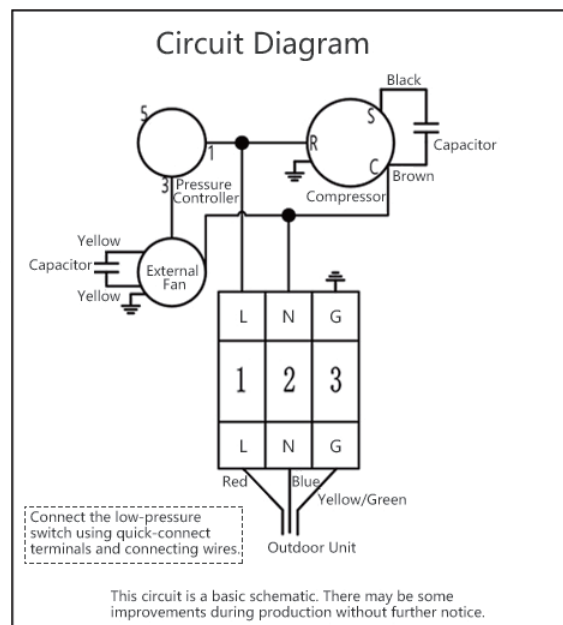
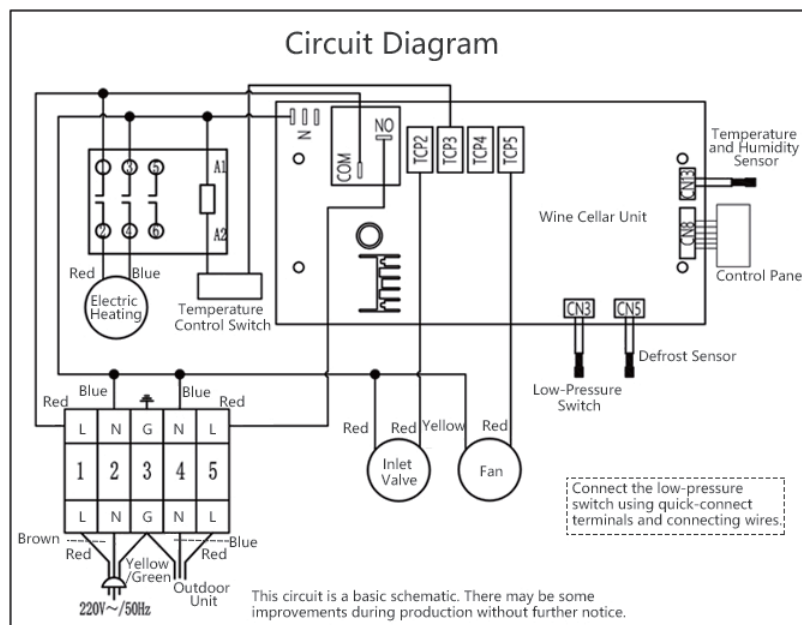


Air Conditioner
Outdoor Unit

03 Installation Schematic



04 Wiring Diagram



05 Product Specifications

Model			WS-0-30	WS-30-60
Power supply		PH/V/Hz	1/220/50	
Number of pieces		P	1	2
Applicable volume (m ³)			10-30	30-60
Overall unit performance	Refrigeration capacity	KW	2.5	5.1
	Heating capacity	KW	2.6	5.6
	Electric heating	KW	3	6
	Air volume	m ³ /h	350	750
	External residual pressure	pa	50	50
	Unit noise	dB(A)	42	48
	Controller		Button controller	
	Temperature setting range	°C	8-18, accuracy ±2	
	Humidity setting range	%RH	60-70, accuracy ±5	
	Total unit capacity	KW	4.2	8.6
Humidifier		Type	Wet pad humidification	
Indoor unit	Machine size	Length*width*height (mm)	760*700*260	1195*740*260
Outdoor unit	Machine size	Length*width*height (mm)	810*275*540	960*320*850
Connecting pipe size		High pressure pipe (mm)	6	6
		Low pressure pipe (mm)	12	12

06 Suitable for Various Wine Cellars

