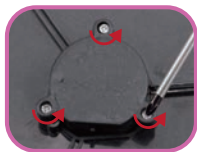


## BATTERY INSTRUCTIONS

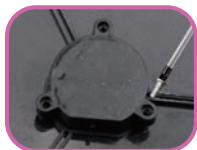
### FLYING DISC



1. Open the battery cover with a screwdriver.



2. Put in 2 CR2016 button batteries, Positive electrode facing downwards.



3. Cover the battery cover and tighten the screws.

### LED BANDS



(1)



(2)



(3)

1. Open the battery cover with a screwdriver.

2. Put in 2 CR2032 button batteries, Positive electrode facing upwards.

3. Cover the battery cover and tighten the screws.