

INSTRUCTION MANUAL

Please read carefully before operation and keep for future reference.

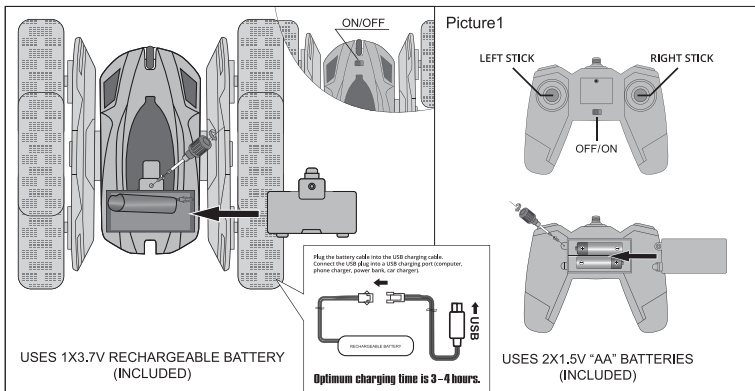
⚠ CAUTION:

BATTERY-OPERATED PRODUCT

Recommended for kids ages 6+. Please exercise caution when charging the product. Adult supervision is advised.

BATTERY INSTALLATION

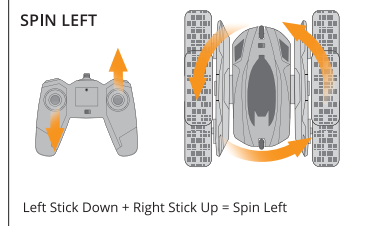
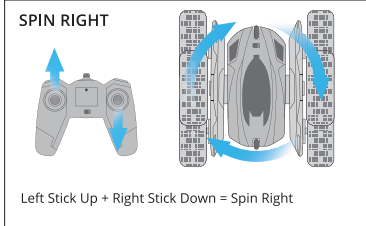
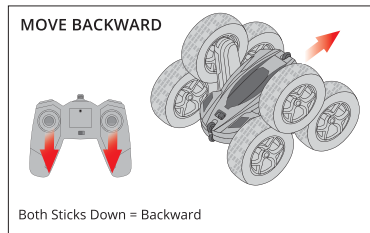
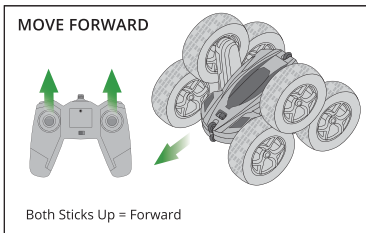
1. Make sure that both the remote controller and the RC car are turned OFF.
2. Remove battery cover with a Phillips screwdriver.
3. Install battery with correct polarity as shown in Picture 1.
4. Replace battery cover and tighten the screw.



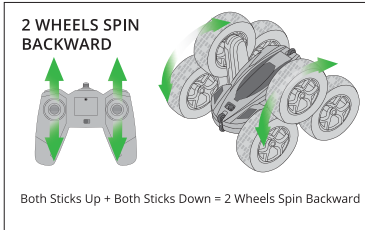
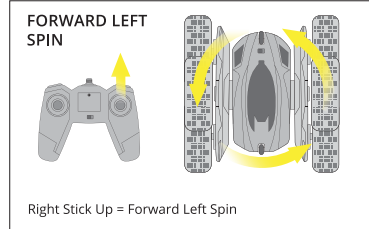
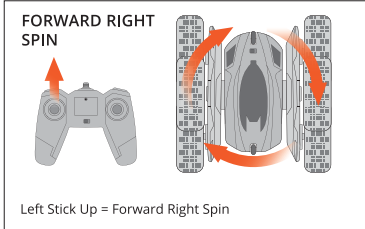
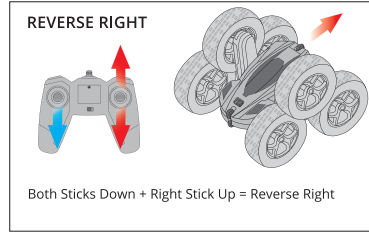
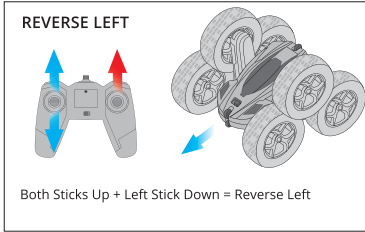
HOW TO PLAY

1. Switch ON both the remote controller and the RC car.
2. The RC car and the remote controller will automatically pair.
3. When your RC car starts to slow down, charge it using the included USB charging cable.

BASIC OPERATION CONTROLS



BASIC OPERATION CONTROLS



BATTERY SAFETY INSTRUCTIONS

1. Do not short circuit terminals.
2. Do not recharge non-rechargeable batteries.
3. Do not recharge rechargeable batteries without adult supervision.
4. Do not mix different types of batteries. Do not mix old and new batteries.
5. Dispose old and used batteries properly. Do not put batteries in fire as they may explode.
6. Regularly check the USB charging cable for damages. If any damage is found, discontinue use until completely repaired.
7. Remove exhausted batteries from the toy.
8. Remove battery from the toy before charging.
9. Do not overcharge batteries. Charging time is 3-4 hours.

CARE AND MAINTENANCE

1. Always remove batteries from the RC car and the remote controller when not in use.
2. To clean, wipe the toy gently with a clean, damp cloth.
3. Keep your RC toy away from direct sunlight and direct heat.

ADDITIONAL GUIDELINES

1. When your RC car is running low on battery power, it may not be able to perform flips.
2. Your RC car cannot perform flips on smooth surfaces.
3. Make sure that the RC car battery is fully charged before playing.



GUARANTEE - If your product does not perform properly, please contact us at support@force1rc.com for fast service.

WARNING:
CHOKING HAZARD—Small parts.
Not for children under 3 years.



To ensure that play is both safe and fun, please review these operating instructions:

Failure to follow all safety instructions may result in injury or property damage none of which Force1 will be held liable for as proper warnings are outlined in the manual.

- Upon use of this product the end user assumes all responsibility and Force1 cannot be held liable for any personal injury and/or property damage.
- This item contains fast moving parts, motors and/or other wiring. When using it, basic precautions should always be followed including but not limited to the following:
 - Keep your eye on the product at all times
 - Tie back hair or wear a hat to avoid entanglement or injury
 - Keep hands, hair and loose clothing away from moving parts when the power switch is turned ON.
- Please ensure the product is turned off when not in use.

WARNING



CHANGES OR MODIFICATIONS TO THIS UNIT NOT EXPRESSLY APPROVED BY THE SELLER WILL VOID THE USER'S AUTHORITY TO OPERATE THE EQUIPMENT.