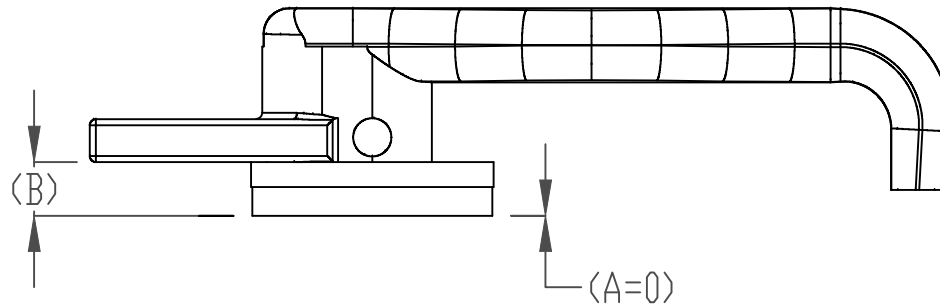


PRODUCT APPLICATION	FUNCTION	MATERIAL	DIM A (MM)	DIM B (MM)	DIM A (INCHES)	DIM B (INCHES)	PART NUMBER	DESCRIPTION
575 French/Dutch	French and Dutch Break	Nylon	0	11	0	7/16	108636	INT DOG NYL BLK A0-B11 KIT
575-Dutch/575-French	Dutch and French Break	Stainless Steel	0	11	0	7/16	108547	INT DOG 316 POL A0-B11 KIT
250-Dutch LH	Dutch Break	Nylon	0	15	0	9/16	103670	INT DOG NYL BLK A0-B15 LH KIT
250-Dutch RH	Dutch Break	Nylon	0	15	0	9/16	108530	INT DOG NYL BLK A0-B15 RH KIT
250-Dutch LH	Dutch Break	Stainless Steel	0	15	0	9/16	108601	INT DOG 316 POL A0-B15 LH KIT
250-Dutch RH	Dutch Break	Stainless Steel	0	15	0	9/16	108602	INT DOG 316 POL A0-B15 RH KIT
575 Series	Panel to Frame	Nylon	0	32	0	1 1/4	108531	INT DOG NYL BLK A0-B32 KIT
575 Series	Panel to Frame	Stainless Steel	0	32	0	1 1/4	108600	INT DOG 316 POL A0-B32 KIT



**REVISIONS**

REV.	DESCRIPTION	BY	DATE

**GENERAL NOTES**

- REMOVE ALL BURRS AND BREAK SHARP EDGES AND CORNERS .75mm (.03in) MAX.

UNLESS OTHERWISE SPECIFIED, DIMENSIONS ARE IN MILLIMETERS. TOLERANCES FOR ROUGH AND CLEAR OPENINGS ARE ±.3mm (.0125"). ALL OTHERS ARE:

	X	X	.XX	ANGLES
METRIC	±.25	±.3	±.25	±.1°
IMPERIAL	.X	.XX	.XXX	±.1°
DR CODE				CRG CODE



COPYRIGHT 2018 ADVANTEC. ALL RIGHTS RESERVED. THIS DOCUMENT IS THE PROPERTY OF ADVANTEC. IT IS TO BE USED ONLY FOR THE PURPOSES SPECIFIED HEREIN. IT IS NOT TO BE REPRODUCED OR TRANSMITTED IN ANY FORM OR BY ANY MEANS, ELECTRONIC OR MECHANICAL, WITHOUT PERMISSION IN WRITING FROM ADVANTEC. ADVANTEC AND NOT BE RETURNED UPON REQUEST.

**DWG TITLE**

**INTERIOR BLIND DOGS**

SCALE	DRAWN	DATE	CHECKED	DATE	SHEET	REV
1:1	DS	2018-01-26			1	0
					1	0