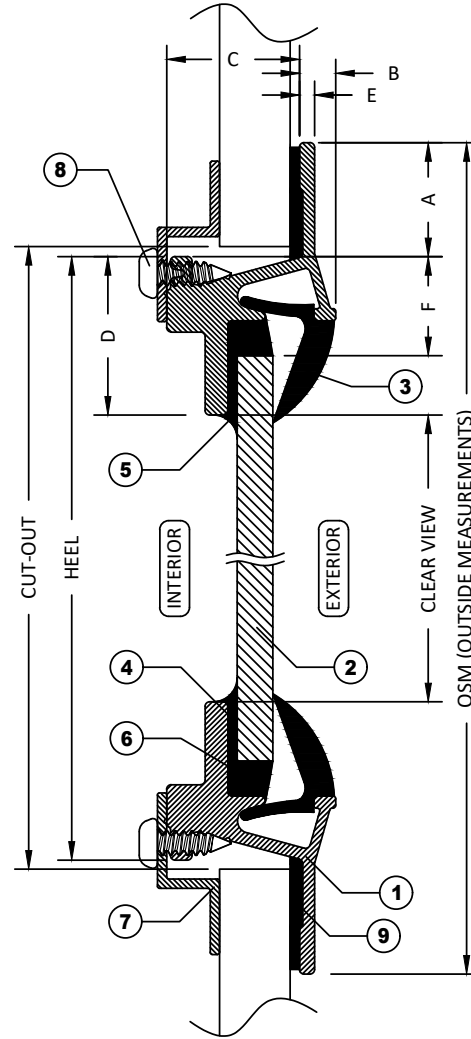
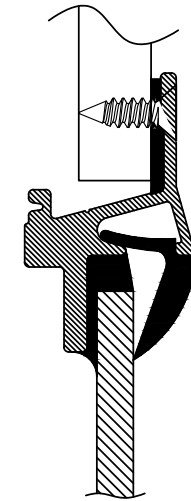
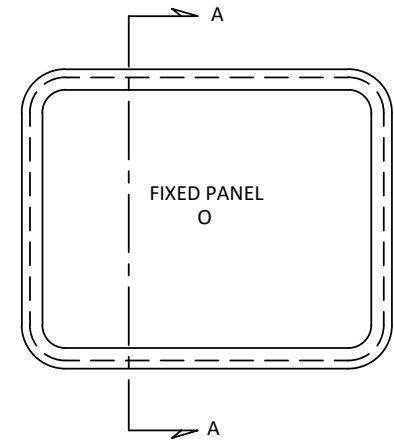


ITEMS			
ID	DESCRIPTION	MATERIAL	PART NUMBER
1	MOUNTING FRAME	6063 ALUMINUM	103824
2	GLAZING	GLASS 6mm (1/4")	VARIES
3	FULCRUM GLAZING	SANTOPRENE	103059
4	BUTYL TAPE	RUBBER	103012
5	SEALANT	SILICONE	103070
6	BACKFILL	URETHANE	103032
7	TRIM RING	6063 ALUMINUM	VARIES
8	TRIM SCREWS	S.S.	103154
9	BEDDING COMPOUND	CUSTOMER TO SUPPLY	N/A

STANDARD DIMENSIONS		
ID	DESCRIPTION	DIMENSION
A	FLANGE COVERAGE	19mm (3/4")
B	EXTERIOR PROTRUSION	6mm (1/4")
C	INTERIOR PROTRUSION	22mm (7/8")
D	SPIGOT TO CLEAR VIEW	27mm (1 1/16")
E	FLANGE THICKNESS	3mm (1/8")
F	GLASS OFFSET	17mm (11/16")



SECTION A-A WITH CLAMP IN INSTALLATION



OPTIONAL BOLT-ON INSTALLATION

NOTES:

- GENERAL HEEL TOLERANCE +0/-1/4" OVERALL
- AVAILABLE WITH 2 1/2"(64MM), 3"(76MM), 3 1/2"(89MM) RADIUS OR MITERED CORNERS
- STANDARD MOUNTING HOLES ARE 3/16" WITH #10 COUNTERSUNK ON 6" NOMINAL CENTERS
- GLAZING OPTIONS: 6mm GLASS
- INSTALLATION: BOLT IN OR CLAMP RING (Z OR L PROFILE)

DRAWING NUMBER

D5

DIAMOND SEA GLAZE MANUFACTURING LTD.
26995 GLOUCESTER WAY, LANGLEY B.C.
CANADA V4W 3Y3
TOLL FREE: 1-800-770-0455
PHONE: 604-607-0091
FAX: 604-607-0092

SCALE

NTS

BY

LD/RH



Diamond Sea Glaze

ITEM NAME

D5

REVISION

3

ITEM DESCRIPTION

FIXED WINDOW

ALL DRAWINGS AND ANY ASSOCIATED INFORMATION HEREON CONTAIN PROPRIETARY AND/OR CONFIDENTIAL INFORMATION, AND SHALL NOT BE REPRODUCED, DISCLOSED OR SUBMITTED TO ANY THIRD PARTY WITHOUT PRIOR CONSENT FROM DIAMOND SEA GLAZE MANUFACTURING LTD.