

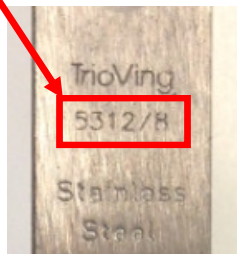
## How to identify the correct replacement lockset

### 1) Identify the Lock Case Model #

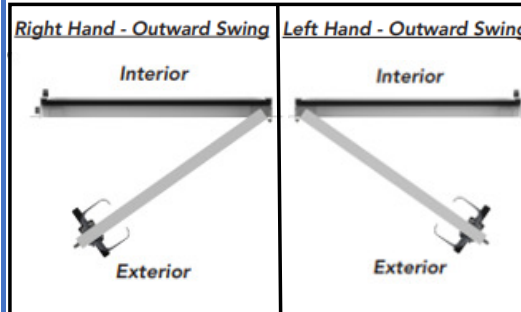
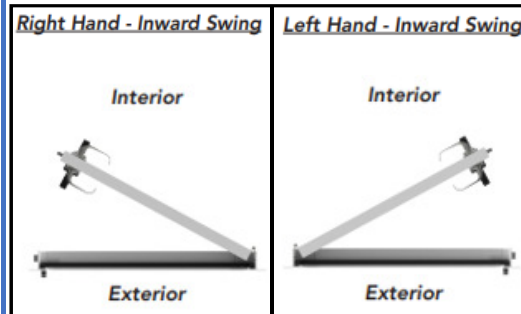
The Model # is located on the face plate of the lock case in the upper portion, as shown below -

**Available Options:**

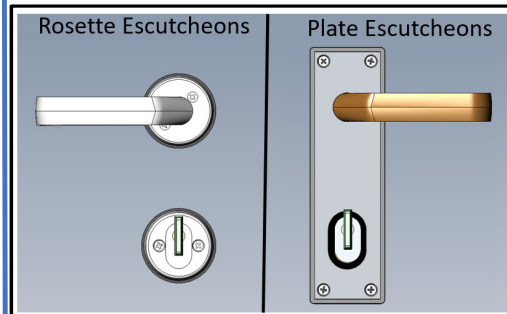
- 5312/8
- 5316/8
- 5336/8
- 5341/8
- 5382/8



### 2) Identify the Lock Case Handing



### 3) Identify the type of Escutcheons

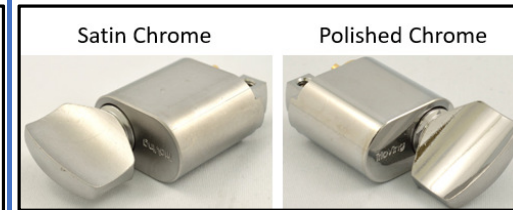


- Available Options:**
- Plate Escutcheons
  - Rosette Escutcheons \*\*

\*\*Cylinder rosettes are now 9mm (height) by default, but other sizes are available upon request [12mm & 18mm]\*\*

\*\*Handle Rosettes are only available in 6mm (height) size\*\*

### 4) Identify the type of finish



**Available Options:**

- Satin Chrome
- Polished Chrome

Satin Chrome is considered the "commercial grade" finish

Polished Chrome is considered the "yacht quality" finish

Rev1  
05-Jul-19

