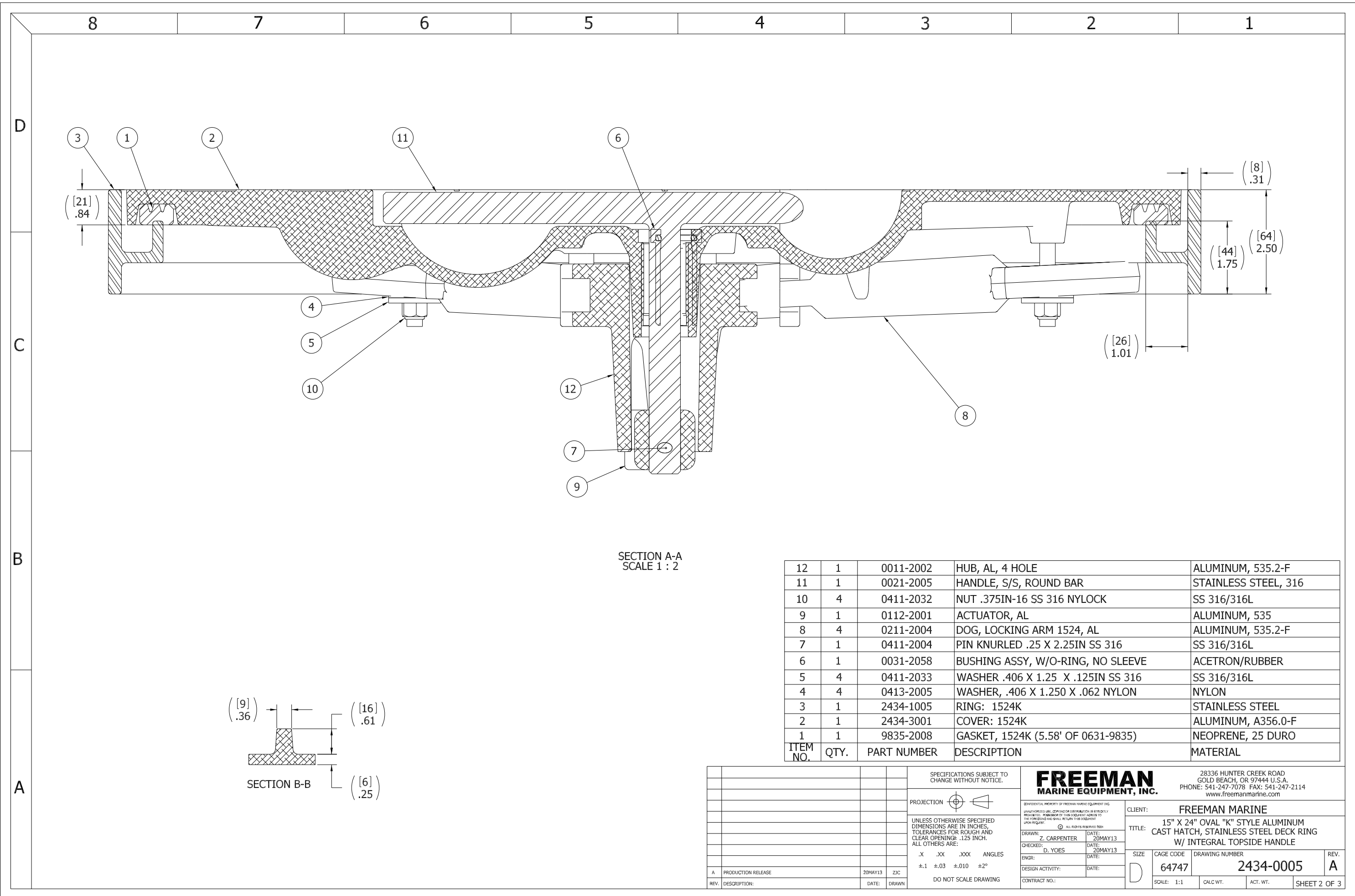


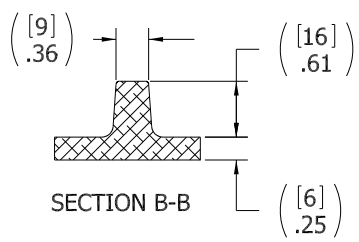
- 10. FOR SPECIFIC INFORMATION CONTACT SALES.
- 9. COMPLETE ASSEMBLY WEIGHT W/ DECK RING, 48.7LBS/ 22.1K.
- 8. DOGGING PRESSURE FULLY ADJUSTABLE.
- 7. HANDLE POSITION TOPSIDE INDICATES WHETHER DOGGING MECHANISM IS IN OPEN OR CLOSED POSITION.
- 6. ALUMINUM ALLOY MECHANISM SHOWN.
- 5. FLUSH, WATERTIGHT CONSTRUCTION.
- 4. INTEGRAL TOPSIDE "T" HANDLE STANDARD, OTHER TOPSIDE ACTUATION AVAILABLE.
- 3. STAINLESS STEEL RING.
- 2. QUICK-ACTING, MECHANISM ENGAGES OR DISENGAGES IN QUARTER-TURN OF CENTER SPINDLE.
- 1. 15.25 x 24.06" CLEAR OPENING, ALL DIMENSIONS SHOWN SUBJECT TO CASTING VARIATION AND ARE REFERENCE ONLY.

NOTES: UNLESS OTHERWISE SPECIFIED.

SPECIFICATIONS SUBJECT TO CHANGE WITHOUT NOTICE.				<b>FREEMAN</b> MARINE EQUIPMENT, INC.		28336 HUNTER CREEK ROAD GOLD BEACH, OR 97444 U.S.A. PHONE: 541-247-7078 FAX: 541-247-2114 www.freemanmarine.com	
<small>UNLESS OTHERWISE SPECIFIED DIMENSIONS ARE IN INCHES. TOLERANCES FOR ROUGH AND CLEAR OPENINGS: .125 INCH. ALL OTHERS ARE:</small> .X .XX .XXX ANGLES ±.1 ±.03 ±.010 ±2°		<small>DO NOT SCALE DRAWING</small>		<small>CONFIDENTIAL PROPERTY OF FREEMAN MARINE EQUIPMENT, INC. UNLESS OTHERWISE SPECIFIED OR OTHERWISE INDICATED. THIS DOCUMENT IS THE PROPERTY OF FREEMAN MARINE EQUIPMENT, INC. AND SHALL BE RETURNED TO THE COMPANY UPON REQUEST. © ALL RIGHTS RESERVED 2013</small>		CLIENT: <b>FREEMAN MARINE</b> TITLE: <b>15" X 24" OVAL "K" STYLE ALUMINUM CAST HATCH, STAINLESS STEEL DECK RING W/ INTEGRAL TOPSIDE HANDLE</b>	
DRAWN: Z. CARPENTER DATE: 20MAY13 CHECKED: D. YOES DATE: 20MAY13 ENGR: DATE: DESIGN ACTIVITY: DATE: CONTRACT NO.:		SIZE: <b>D</b> CAGE CODE: <b>64747</b> DRAWING NUMBER: <b>2434-0005</b>		SCALE: 1:2.5 CALC. WT. ACT. WT.		REV. <b>A</b> SHEET 1 OF 3	

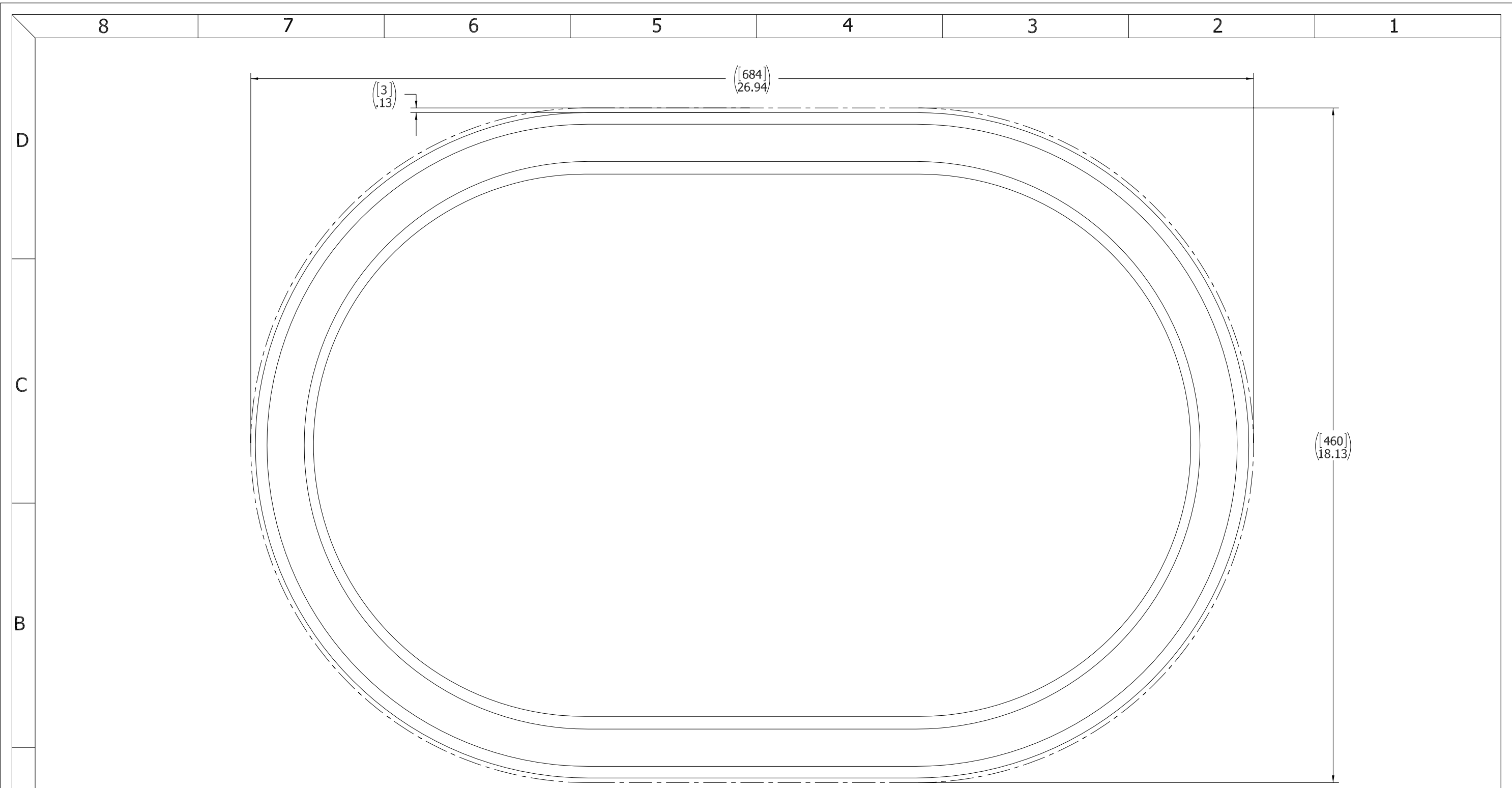


SECTION A-A  
SCALE 1 : 2



ITEM NO.	QTY.	PART NUMBER	DESCRIPTION	MATERIAL
12	1	0011-2002	HUB, AL, 4 HOLE	ALUMINUM, 535.2-F
11	1	0021-2005	HANDLE, S/S, ROUND BAR	STAINLESS STEEL, 316
10	4	0411-2032	NUT .375IN-16 SS 316 NYLOCK	SS 316/316L
9	1	0112-2001	ACTUATOR, AL	ALUMINUM, 535
8	4	0211-2004	DOG, LOCKING ARM 1524, AL	ALUMINUM, 535.2-F
7	1	0411-2004	PIN KNURLED .25 X 2.25IN SS 316	SS 316/316L
6	1	0031-2058	BUSHING ASSY, W/O-RING, NO SLEEVE	ACETRON/RUBBER
5	4	0411-2033	WASHER .406 X 1.25 X .125IN SS 316	SS 316/316L
4	4	0413-2005	WASHER, .406 X 1.250 X .062 NYLON	NYLON
3	1	2434-1005	RING: 1524K	STAINLESS STEEL
2	1	2434-3001	COVER: 1524K	ALUMINUM, A356.0-F
1	1	9835-2008	GASKET, 1524K (5.58' OF 0631-9835)	NEOPRENE, 25 DURO

SPECIFICATIONS SUBJECT TO CHANGE WITHOUT NOTICE.		<b>FREEMAN MARINE EQUIPMENT, INC.</b> 28336 HUNTER CREEK ROAD GOLD BEACH, OR 97444 U.S.A. PHONE: 541-247-7078 FAX: 541-247-2114 www.freemanmarine.com	
PROJECTION		CLIENT: <b>FREEMAN MARINE</b>	
UNLESS OTHERWISE SPECIFIED DIMENSIONS ARE IN INCHES. TOLERANCES FOR ROUGH AND CLEAR OPENINGS: .125 INCH. ALL OTHERS ARE: .X .XX .XXX ANGLES ±.1 ±.03 ±.010 ±2°		TITLE: <b>15" X 24" OVAL "K" STYLE ALUMINUM CAST HATCH, STAINLESS STEEL DECK RING W/ INTEGRAL TOPSIDE HANDLE</b>	
DO NOT SCALE DRAWING		CONTRACT NO.:	
A PRODUCTION RELEASE 20MAY13 ZIC		DRAWN: Z. CARPENTER DATE: 20MAY13 CHECKED: D. YOES DATE: 20MAY13 ENGR: DATE: DESIGN ACTIVITY: DATE:	
REV. DESCRIPTION: DATE: DRAWN		SCALE: 1:1 CALC WT. ACT. WT.	
		SHEET 2 OF 3	



DECK CUT OUT

- 3. FINISH: 125 RMS MAX.
- 2. BREAK SHARP EDGES AND DEBURR.
- 1. MATERIAL: REF. S/A - B.O.M.

NOTES: UNLESS OTHERWISE SPECIFIED.

CUSTOMER APPROVAL

Signature: \_\_\_\_\_

Date: \_\_\_\_\_

IMPORTANT! THIS DRAWING SUPERSEDES ALL OTHER DOCUMENTS. By signing this approval you accept and agree that the dimensions and details shown are correct and properly fit your application, regardless of any differences between this drawing and any contract specifications. Should you see any errors in the drawing, or have any questions, please contact your Freeman Marine sales engineer for clarification.

REV.	DESCRIPTION	DATE	DRAWN
A	PRODUCTION RELEASE	20MAY13	ZIC

SPECIFICATIONS SUBJECT TO CHANGE WITHOUT NOTICE.

PROJECTION

UNLESS OTHERWISE SPECIFIED DIMENSIONS ARE IN INCHES. TOLERANCES FOR ROUGH AND CLEAR OPENINGS: .125 INCH. ALL OTHERS ARE:

.X	.XX	.XXX	ANGLES
±.1	±.03	±.010	±2°

DO NOT SCALE DRAWING

		28336 HUNTER CREEK ROAD GOLD BEACH, OR 97444 U.S.A. PHONE: 541-247-7078 FAX: 541-247-2114 www.freemanmarine.com	
		CLIENT:	FREEMAN MARINE
<small>CONFIDENTIAL PROPERTY OF FREEMAN MARINE EQUIPMENT, INC. UNLESS OTHERWISE SPECIFIED, ALL RIGHTS RESERVED. THE REPRODUCTION, DISTRIBUTION, OR SALE OF THIS DRAWING WITHOUT THE WRITTEN PERMISSION OF FREEMAN MARINE EQUIPMENT, INC. IS STRICTLY PROHIBITED.</small>		TITLE: 15" X 24" OVAL "K" STYLE ALUMINUM CAST HATCH, STAINLESS STEEL DECK RING	
DRAWN: Z. CARPENTER CHECKED: D. YOES ENGR: _____ CONTRACT NO.: _____	DATE: 20MAY13 DATE: 20MAY13 DATE: _____	SIZE: D CAGE CODE: 64747 SCALE: 1:1.25	DRAWING NUMBER: 2434-0005 ACT. WT.: _____ SHEET 3 OF 3

A

B

C

D

8

7

6

5

4

3

2

1