

REVISIONS			
REV.	DESCRIPTION	BY	DATE
00	INITIAL RELEASE	TLK	05/04/07
01	UPDATED PER ECN 054-21	SP	04/14/21

- GENERAL NOTES**
- 24.6 X 24.6" CLEAR OPENING, ALL DIMENSIONS SHOWN SUBJECT TO CASTING VARIATION AND ARE REFERENCE ONLY.
 - QUICK-ACTING, MECHANISM ENGAGES OR DISENGAGES FOR QUARTER-TURN OF CENTER SPINDLE.
 - CAST ALUMINIUM ALLOY FLANGE, FLANGE CAN BE DRILLED FOR BOLTED INSTALLATIONS OR WELDED TO ALUMINIUM
 - INTEGRAL TOPSIDE "T" HANDLE STANDARD, OTHER TOPSIDE ACTUATION AVAILABLE.
 - FLUSH, WATERTIGHT CONSTRUCTION.
 - ALUMINIUM ALLOY MECHANISM SHOWN.
 - HANDLE POSITION TOPSIDE INDICATES WHETHER DOGGING MECHANISM IS IN OPEN OR CLOSED POSITION.
 - DOGGING PRESSURE FULLY ADJUSTABLE.
 - COMPLETE ASSEMBLY WEIGHT W/ DECK RING, 57.9LBS/ 26.3K.
 - FOR SPECIFIC INFORMATION CONTACT SALES
 - FINISH - COAMING: PER SALES ORDER SPECIFICATION. FINISH - COVER: PER SALES ORDER SPECIFICATION.

CUSTOMER APPROVAL
 IMPORTANT! THIS DRAWING SUPERSEDES ALL OTHER DOCUMENTS. By signing this approval you accept and agree that the dimensions and details shown are correct and properly fit your application, regardless of any differences between this drawing and any prior contract specifications. Should you have any questions or see any errors, DO NOT SIGN THIS APPROVAL until the drawing is corrected.

SIGN	DATE			
UNLESS OTHERWISE SPECIFIED, DIMENSIONS ARE IN MILLIMETERS. TOLERANCES FOR ROUGH AND CLEAR OPENINGS ARE ±3mm (.125"). ALL OTHERS ARE:				
METRIC	X	.X	.XX	ANGLES
	±2.5	±.8	±.25	±2°
IMPERIAL	.X	.XX	.XXX	ANGLES
	±.1	±.03	±.010	±2°
BAR CODE	CAGE CODE			
	64747			



COPYRIGHT 20142015 ADVANTEC GLOBAL INNOVATIONS. ALL RIGHTS RESERVED. CONFIDENTIAL PROPERTY OF ADVANTEC GLOBAL INNOVATIONS. UNAUTHORIZED USE, REPRODUCTION OR DISTRIBUTION IS STRICTLY PROHIBITED. COPIES REMAIN THE PROPERTY OF ADVANTEC GLOBAL INNOVATIONS AND MUST BE RETURNED UPON REQUEST.

CLIENT
FREEMAN MARINE

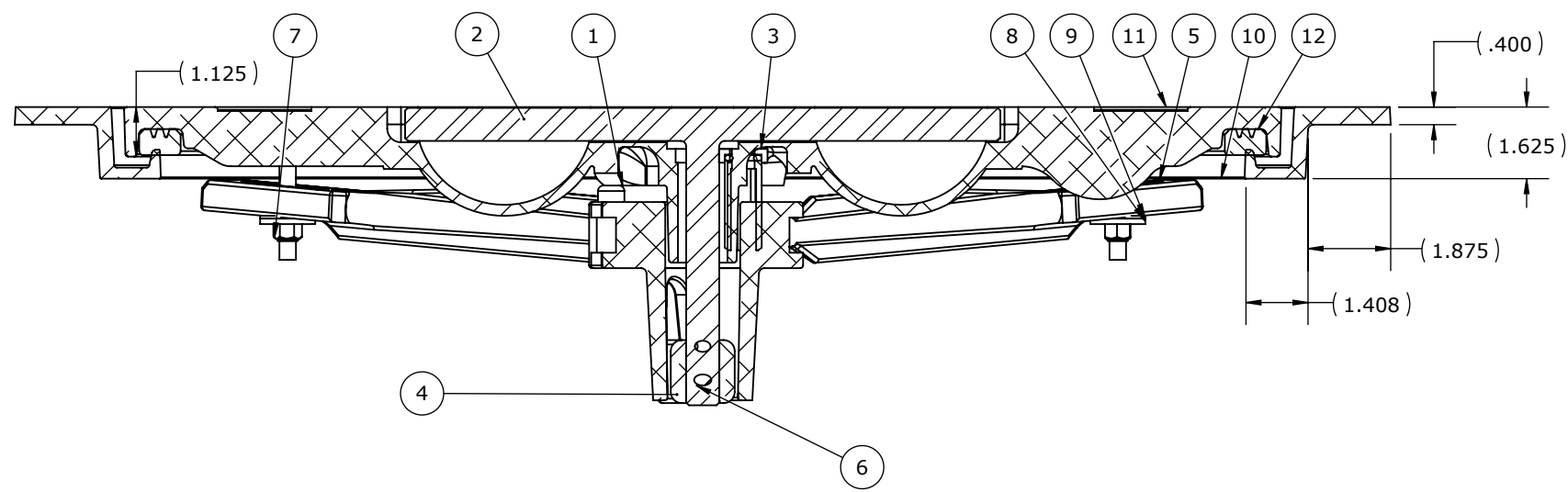
PROJECT TITLE
LIFT OUT, LIFT UP T HANDLE

DWG TITLE
HATCH, 2424K AL COVER AL RING

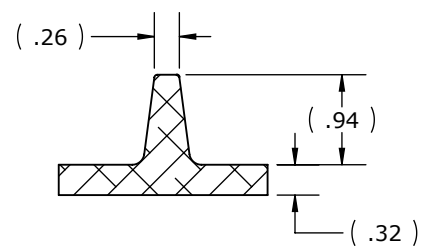
SCALE	DRAWN	DATE	CHECKED	DATE	SIZE
1:8	SF	7/10/2017			B

S.O. NO	DWG NO	SHEET	REV
	2424-0002	1 of 2	01

ITEM	QTY	PART NUMBER	DESCRIPTION	MATERIAL
1	1	0011-2002	HUB, AL, 4 HOLE	535.2-F
2	1	0021-2005	HANDLE, S/S, ROUND BAR	BAR, SS 316L .75IN DIA ROUND (0613-9521)
3	1	0031-2058	BUSHING ASSY, W/O-RING NO SLEEVE	REF S.A. BOM
4	1	0112-2001	ACTUATOR, AL	535.2-F
5	4	0211-2013	DOG, LOCKING ARM	535.2-F
6	1	0411-2004	PIN, KNURLED .25 DIA X 2.25IN SS 316	316/316L
7	4	0411-2032	NUT .375IN NYLOCK	316/316L
8	4	0411-2033	WASHER .406 X 1.25 X .125IN SS 316	316/316L
9	4	0413-2005	WASHER, .406X1.25X.062 NYLON	PTFE (general)
10	1	2424-1002	RING, 2424K AL STD COVER	A356.0-F
11	1	2424-3001	COVER, 2424 AL, FINISHED CASTING	A356.0-F
12	1	9813-2004	GASKET, 2424 (7.33' OF 0631-9813)	NEOPRENE



SECTION C-C



SECTION B-B
SCALE 1 : 2

REVISIONS

SEE SHEET 1

GENERAL NOTES

SEE SHEET 1

CUSTOMER APPROVAL

IMPORTANT! THIS DRAWING SUPERSEDES ALL OTHER DOCUMENTS. By signing this approval you accept and agree that the dimensions and details shown are correct and properly fit your application, regardless of any differences between this drawing and any prior contract specifications. Should you have any questions or see any errors, DO NOT SIGN THIS APPROVAL until the drawing is corrected.

SIGN _____ DATE _____

UNLESS OTHERWISE SPECIFIED, DIMENSIONS ARE IN MILLIMETERS. TOLERANCES FOR ROUGH AND CLEAR OPENINGS ARE ±3mm (.125"). ALL OTHERS ARE:

	X	.X	.XX	ANGLES
METRIC	±2.5	±.8	±.25	±2°
IMPERIAL	±.1	±.03	±.010	±2°

BAR CODE	CAGE CODE
	64747



COPYRIGHT 20142015 ADVANTEC GLOBAL INNOVATIONS. ALL RIGHTS RESERVED. CONFIDENTIAL PROPERTY OF ADVANTEC GLOBAL INNOVATIONS. UNAUTHORIZED USE, REPRODUCTION OR DISTRIBUTION IS STRICTLY PROHIBITED. COPIES REMAIN THE PROPERTY OF ADVANTEC GLOBAL INNOVATIONS AND MUST BE RETURNED UPON REQUEST.

CLIENT
FREEMAN MARINE

PROJECT TITLE
LIFT OUT, LIFT UP T HANDLE

DWG TITLE
HATCH, 2424K AL COVER AL RING

SCALE	DRAWN	DATE	CHECKED	DATE	SIZE
1:4	SF	7/10/2017			B

S.O. NO	DWG NO	SHEET	REV
	2424-0002	2 of 2	01