

REVISIONS

REV.	DESCRIPTION	BY	DATE
00	PRODUCTION RELEASE	TD	8/10/2022

GENERAL NOTES

1. INSTALLATION: WELD-IN.
2. ALL DIMENSIONS SHOWN SUBJECT TO CASTING VARIATION AND ARE REFERENCE ONLY.
3. QUICK-ACTING, MECHANISM ENGAGES OR DISENGAGES IN QUARTER-TURN OF CENTER SPINDLE.
4. APPROX WEIGHT: 7.1kg (16 lb).
5. FINISH: COVER-BARE, NO PAINT/PRIMER
COAMING- PHOS-FOR-PRIME COATED.

FOR ADDITIONAL INFORMATION CONTACT YOUR SALES REPRESENTATIVE OR PROJECT MANAGER.

CUSTOMER APPROVAL

IMPORTANT! THIS DRAWING SUPERSEDES ALL OTHER DOCUMENTS. BY SIGNING THIS APPROVAL YOU ACCEPT AND AGREE THAT THE DIMENSIONS AND DETAILS SHOWN ARE CORRECT AND PROPERLY FIT YOUR APPLICATION, REGARDLESS OF ANY DIFFERENCES BETWEEN THIS DRAWING AND ANY PRIOR CONTRACT SPECIFICATIONS. SHOULD YOU HAVE ANY QUESTIONS OR SEE ANY ERRORS, DO NOT SIGN THIS APPROVAL UNTIL THE DRAWING IS CORRECTED.

SIGN _____ DATE _____

UNLESS OTHERWISE SPECIFIED, DIMENSIONS ARE IN MILLIMETERS. TOLERANCES FOR ROUGH AND CLEAR OPENINGS ARE ±3mm (.125"). ALL OTHERS ARE:

METRIC	X	.X	.XX	ANGLES
	±2.5	±.8	±.25	±2°
IMPERIAL	.X	.XX	.XXX	ANGLES
	±.1	±.03	±.010	±2°

CAGE CODE	CAGE CODE
	64747



COPYRIGHT 2016 ADVANTEC GLOBAL INNOVATIONS. ALL RIGHTS RESERVED. CONFIDENTIAL PROPERTY OF ADVANTEC GLOBAL INNOVATIONS. UNAUTHORIZED USE, REPRODUCTION OR DISTRIBUTION IS STRICTLY PROHIBITED. COPIES REMAIN THE PROPERTY OF ADVANTEC GLOBAL INNOVATIONS AND MUST BE RETURNED UPON REQUEST.

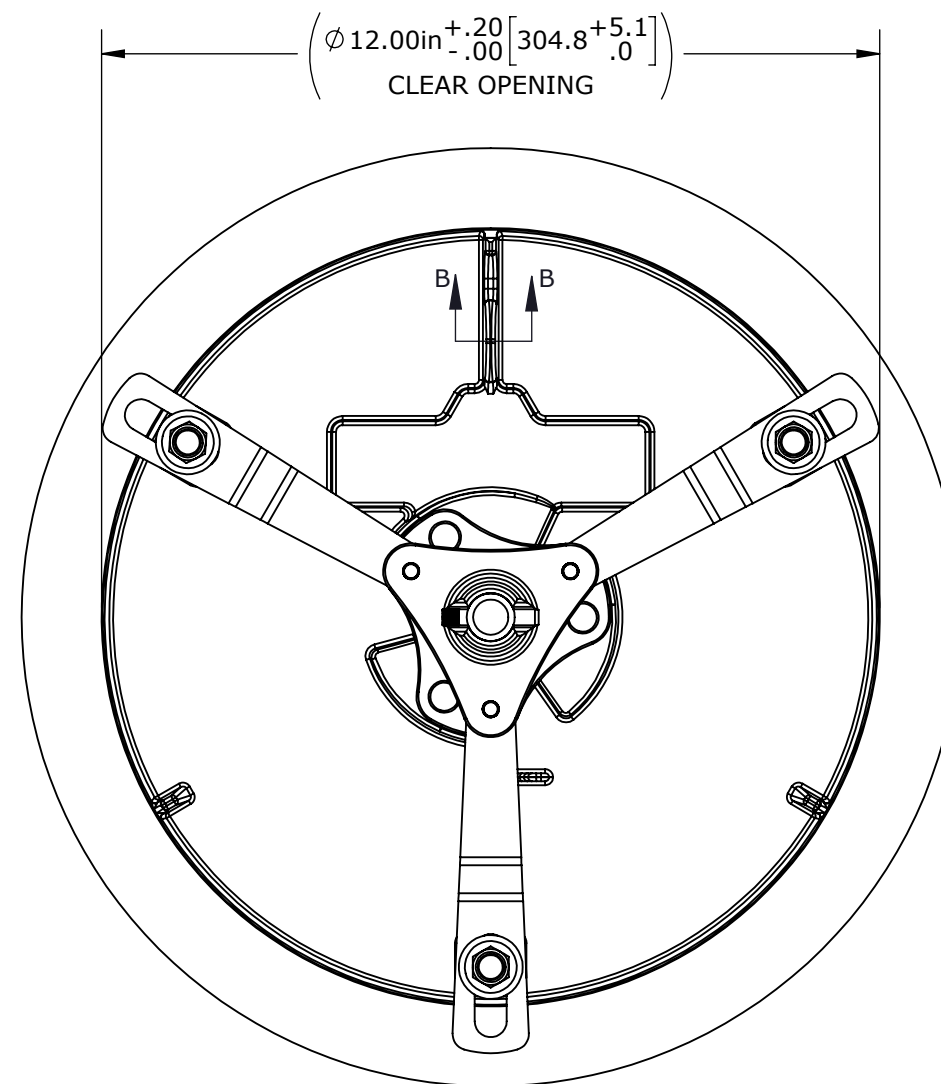
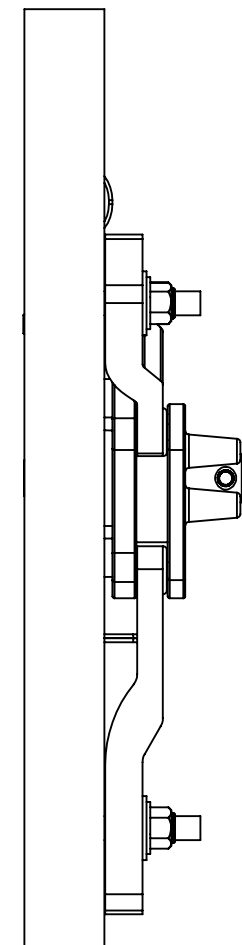
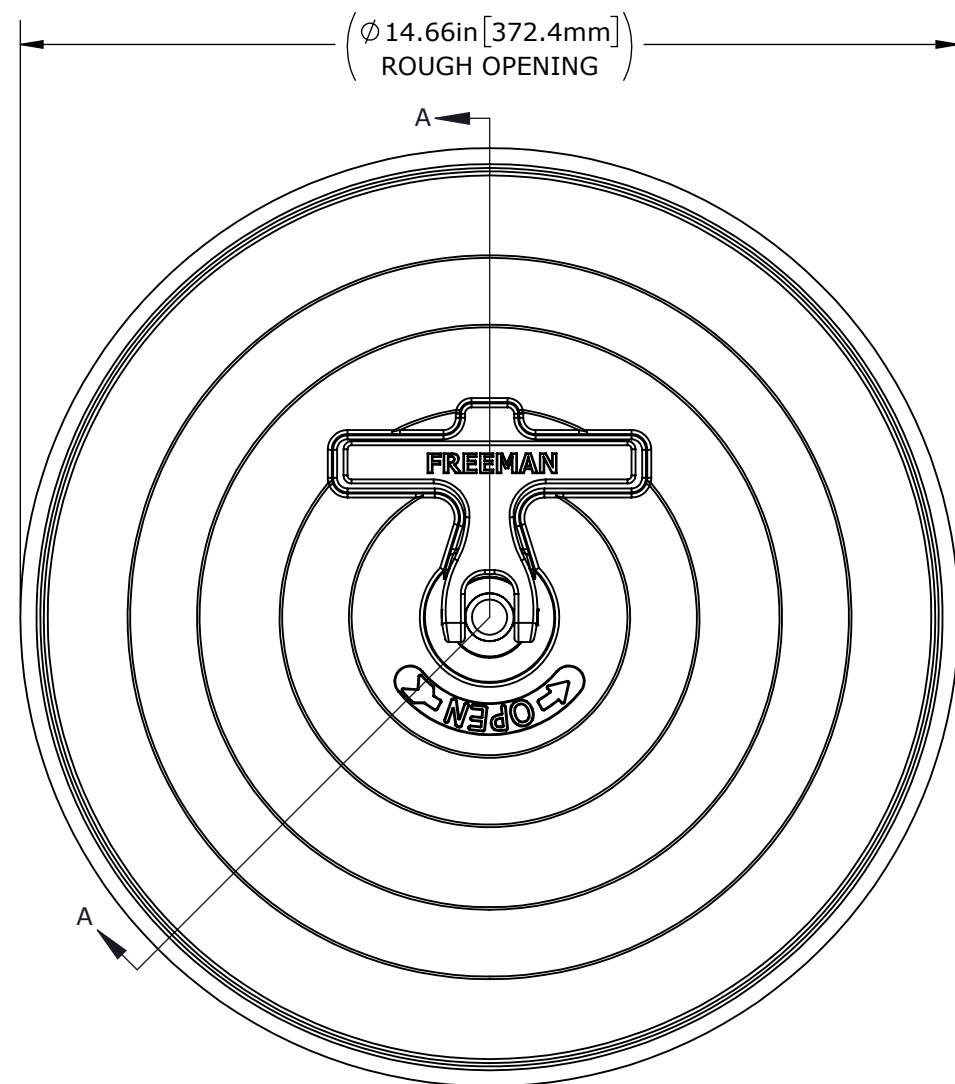
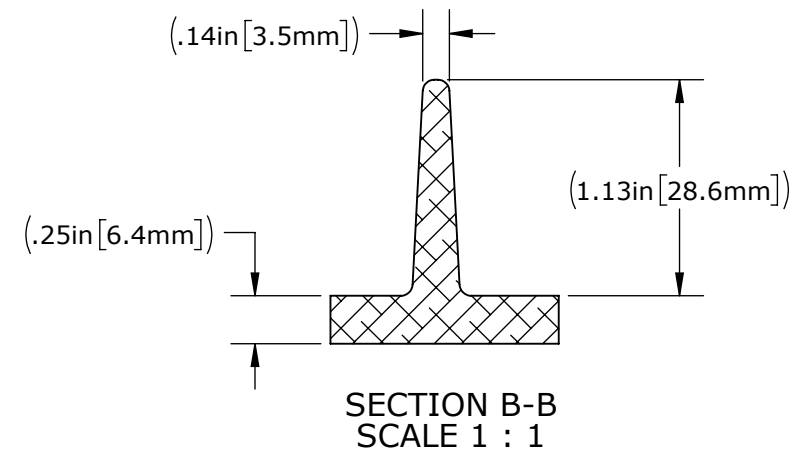
CLIENT
FREEMAN MARINE

PROJECT TITLE
STANDARD HATCH

DWG TITLE
**HATCH, 12 AL COVER
SS RING**

SCALE	DRAWN	DATE	CHECKED	DATE	SIZE
1:3	TD	08/10/2022	MS	08/10/2022	B

S.O. NO	DWG NO	SHEET	REV
	2402-0005	1 of 3	00



ITEM	QTY	PART NUMBER	DESCRIPTION	MATERIAL
1	1	0011-2004	HUB, AL, 8 & 12	REF S.A. BOM
2	1	0021-2001	SHAFT ASSY, 8 & 12 HATCH HANDLE	STAINLESS STEEL
3	1	0031-2319	BUSHING ASSY, 8 & 12 W/O-RING NO SLEEVE	VARIES
4	3	0211-2001	DOG, LOCKING ARM, 12, AL	535-F
5	1	0212-2016	HANDLE, 8 & 12 HATCH	316/316L
6	1	0411-2002	PIN KNURLED .25 X 1.50IN SS 316	316/316L
7	3	0411-2003	PIN KNURLED .25 X 1.125IN SS 316	316/316L
8	3	0411-2032	NUT, HEX .375-16 SS 316 NYLOCK	316/316L
9	3	0411-2101	WASHER, FLAT .406 X 1 X .05IN	SS 316/316L
10	3	0413-2078	WASHER, .406 X 1.0 X .062	NYLON TYPE 6
11	1	2402-1005	RING, 12 ST STL	A36
12	1	2402-3001	COVER: 12 ALUM, FINISHED CASTING	A356-F
13	1	9801-2002	GASKET: 12 (3.42 FT. OF 0631-9801)	Neoprene

REVISIONS

SEE PAGE 1 FOR ALL REVISIONS

GENERAL NOTES

1. SEE PAGE 1.

CUSTOMER APPROVAL

IMPORTANT! THIS DRAWING SUPERSEDES ALL OTHER DOCUMENTS. BY SIGNING THIS APPROVAL YOU ACCEPT AND AGREE THAT THE DIMENSIONS AND DETAILS SHOWN ARE CORRECT AND PROPERLY FIT YOUR APPLICATION, REGARDLESS OF ANY DIFFERENCES BETWEEN THIS DRAWING AND ANY PRIOR CONTRACT SPECIFICATIONS. SHOULD YOU HAVE ANY QUESTIONS OR SEE ANY ERRORS, DO NOT SIGN THIS APPROVAL UNTIL THE DRAWING IS CORRECTED.

SIGN _____ DATE _____

UNLESS OTHERWISE SPECIFIED, DIMENSIONS ARE IN MILLIMETERS. TOLERANCES FOR ROUGH AND CLEAR OPENINGS ARE ±3mm (.125"). ALL OTHERS ARE:

METRIC	X ±2.5	.X ±.8	.XX ±.25	ANGLES ±2°
IMPERIAL	.X ±.1	.XX ±.03	.XXX ±.010	ANGLES ±2°

BAR CODE _____ CAGE CODE 64747



COPYRIGHT 2016 ADVANTEC GLOBAL INNOVATIONS. ALL RIGHTS RESERVED. CONFIDENTIAL PROPERTY OF ADVANTEC GLOBAL INNOVATIONS. UNAUTHORIZED USE, REPRODUCTION OR DISTRIBUTION IS STRICTLY PROHIBITED. COPIES REMAIN THE PROPERTY OF ADVANTEC GLOBAL INNOVATIONS AND MUST BE RETURNED UPON REQUEST.

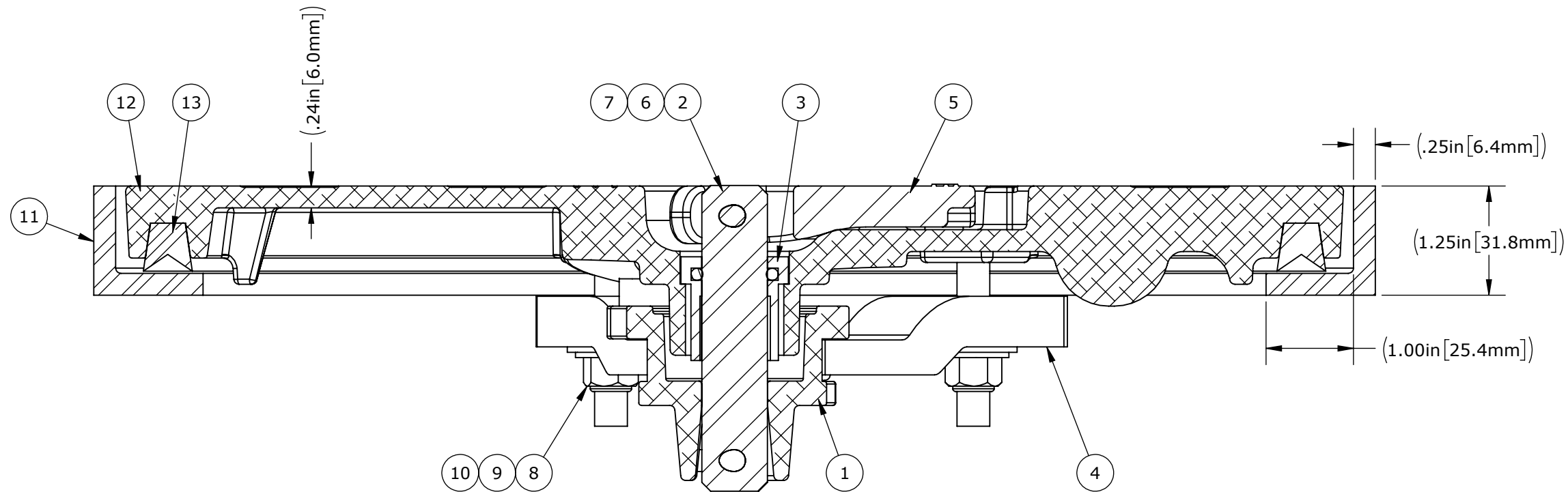
CLIENT FREEMAN MARINE

PROJECT TITLE STANDARD HATCH

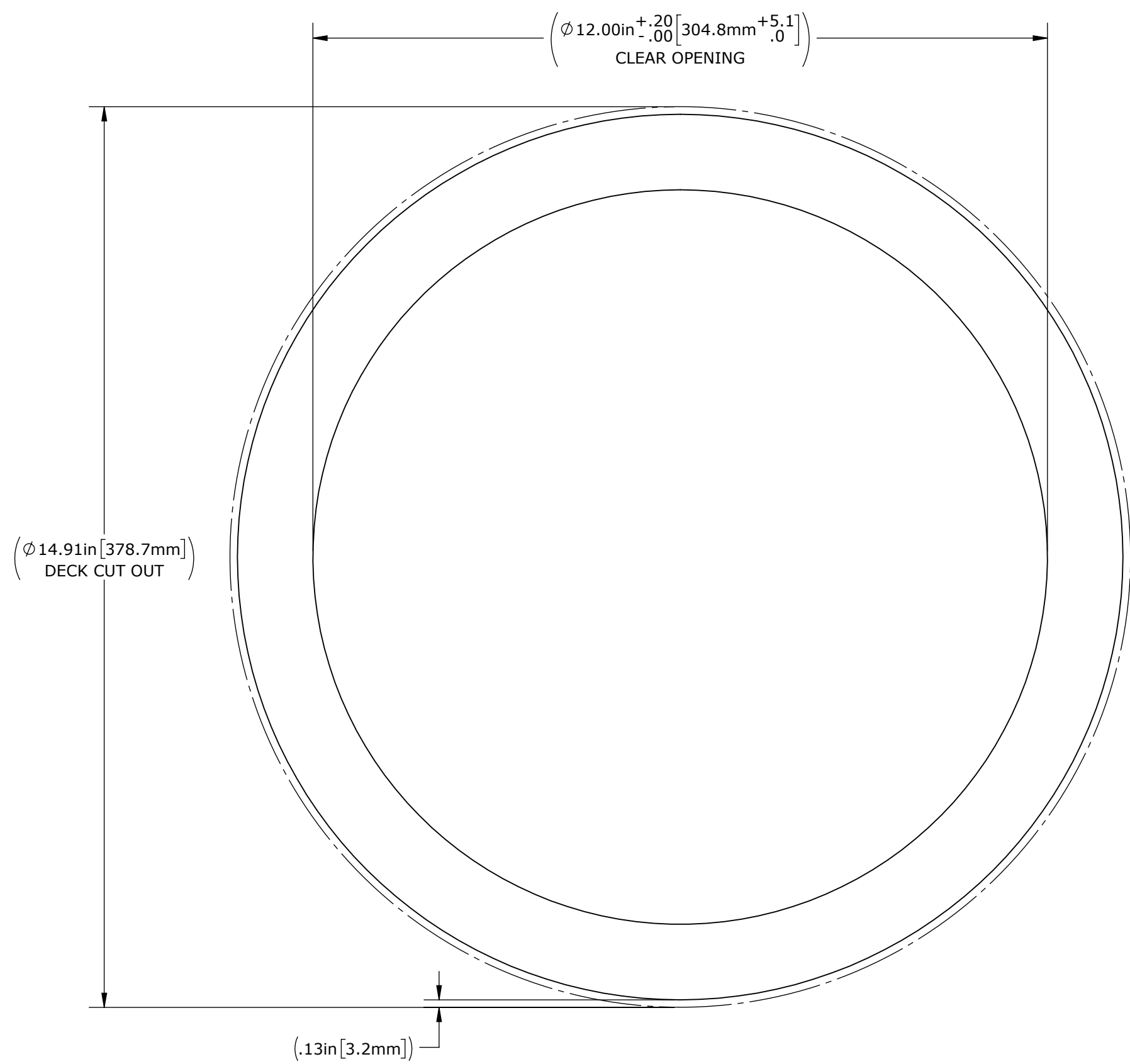
DWG TITLE HATCH, 12 AL COVER SS RING QTY

SCALE	DRAWN	DATE	CHECKED	DATE	SIZE
1:1.5	TD	08/10/2022	MS	08/10/2022	B

S.O. NO	DWG NO	SHEET	REV
	2402-0005	2 of 3	00



SECTION A-A



REVISIONS

SEE PAGE 1 FOR ALL REVISIONS

GENERAL NOTES

REMOVE ALL BURRS AND BREAK SHARP EDGES AND CORNERS .75mm [.03in] MAX.

CUSTOMER APPROVAL

IMPORTANT! THIS DRAWING SUPERSEDES ALL OTHER DOCUMENTS. BY SIGNING THIS APPROVAL YOU ACCEPT AND AGREE THAT THE DIMENSIONS AND DETAILS SHOWN ARE CORRECT AND PROPERLY FIT YOUR APPLICATION, REGARDLESS OF ANY DIFFERENCES BETWEEN THIS DRAWING AND ANY PRIOR CONTRACT SPECIFICATIONS. SHOULD YOU HAVE ANY QUESTIONS OR SEE ANY ERRORS, DO NOT SIGN THIS APPROVAL UNTIL THE DRAWING IS CORRECTED.

SIGN _____ DATE _____

UNLESS OTHERWISE SPECIFIED, DIMENSIONS ARE IN MILLIMETERS. TOLERANCES FOR ROUGH AND CLEAR OPENINGS ARE ±3mm (.125"). ALL OTHERS ARE:

METRIC	X	.X	.XX	ANGLES
	±2.5	±.8	±.25	±2°
IMPERIAL	.X	.XX	.XXX	ANGLES
	±.1	±.03	±.010	±2°

BAR CODE _____ CAGE CODE 64747



COPYRIGHT 2016 ADVANTEC GLOBAL INNOVATIONS. ALL RIGHTS RESERVED. CONFIDENTIAL PROPERTY OF ADVANTEC GLOBAL INNOVATIONS. UNAUTHORIZED USE, REPRODUCTION OR DISTRIBUTION IS STRICTLY PROHIBITED. COPIES REMAIN THE PROPERTY OF ADVANTEC GLOBAL INNOVATIONS AND MUST BE RETURNED UPON REQUEST.

CLIENT
FREEMAN MARINE

PROJECT TITLE
STANDARD HATCH

DWG TITLE
**HATCH, 12 AL COVER
SS RING** QTY

SCALE	DRAWN	DATE	CHECKED	DATE	SIZE
1:2	TD	08/10/2022	MS	08/10/2022	B

S.O. NO	DWG NO	SHEET	REV
	2402-0005	3 of 3	00