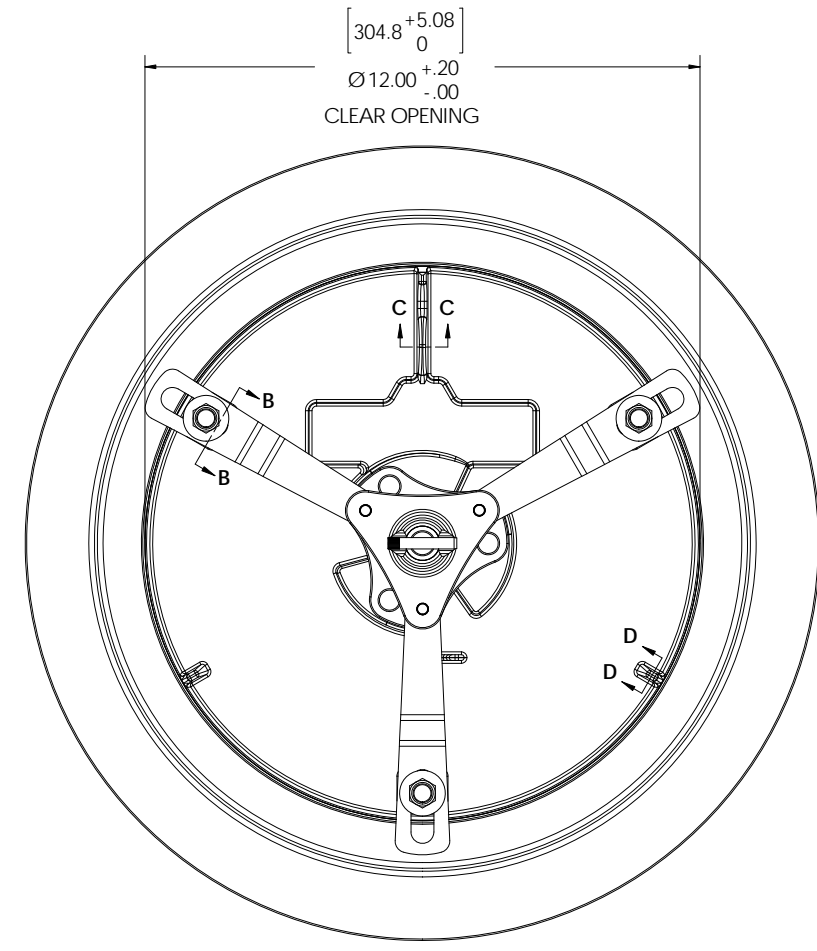
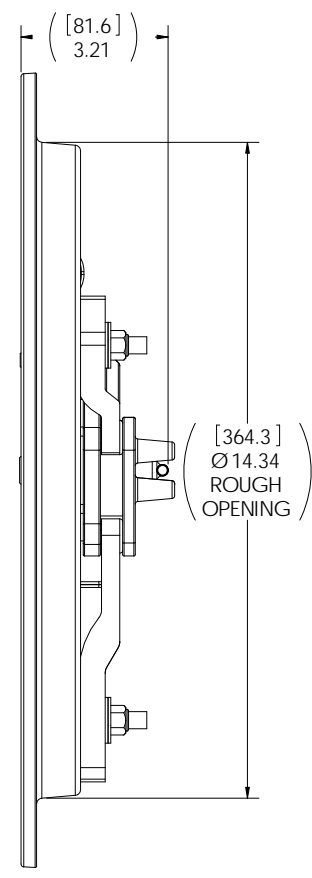
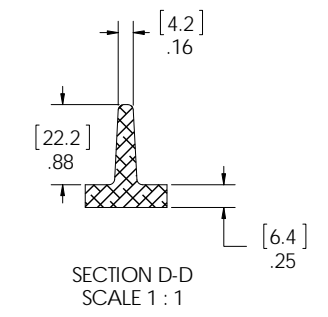
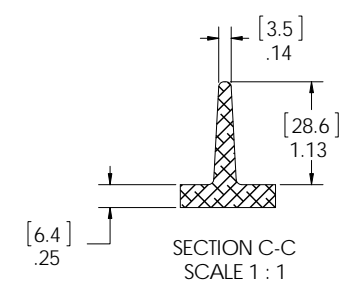
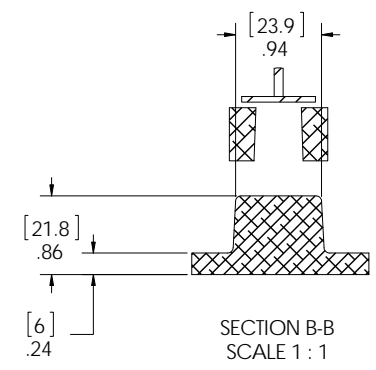
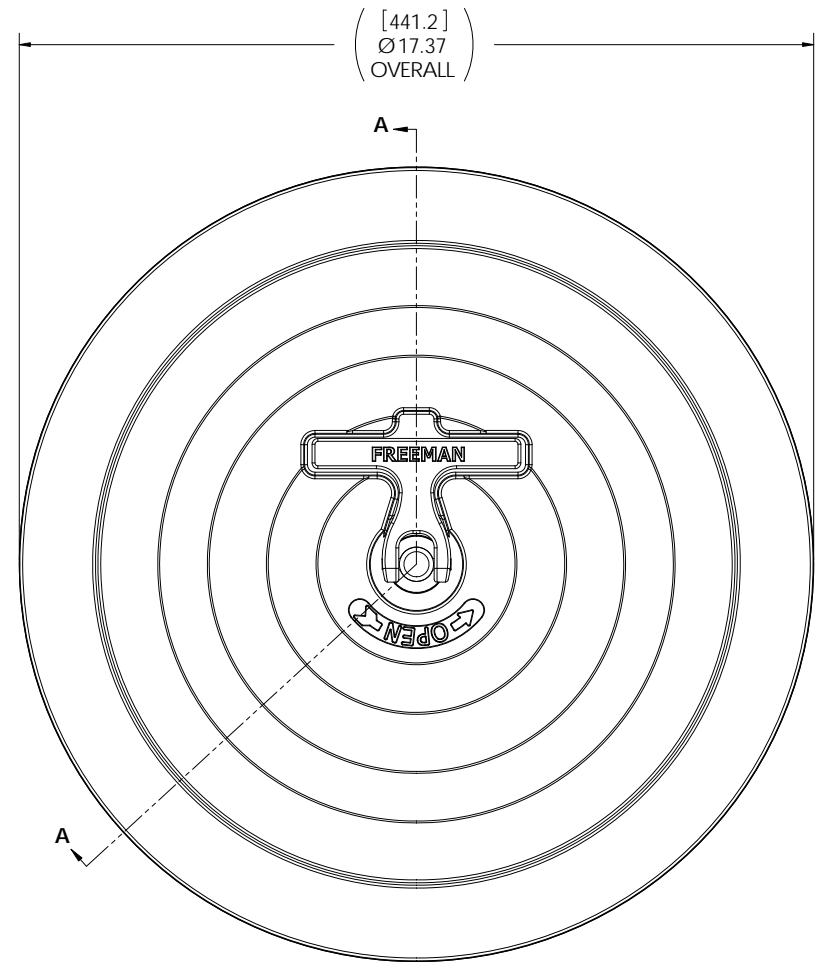


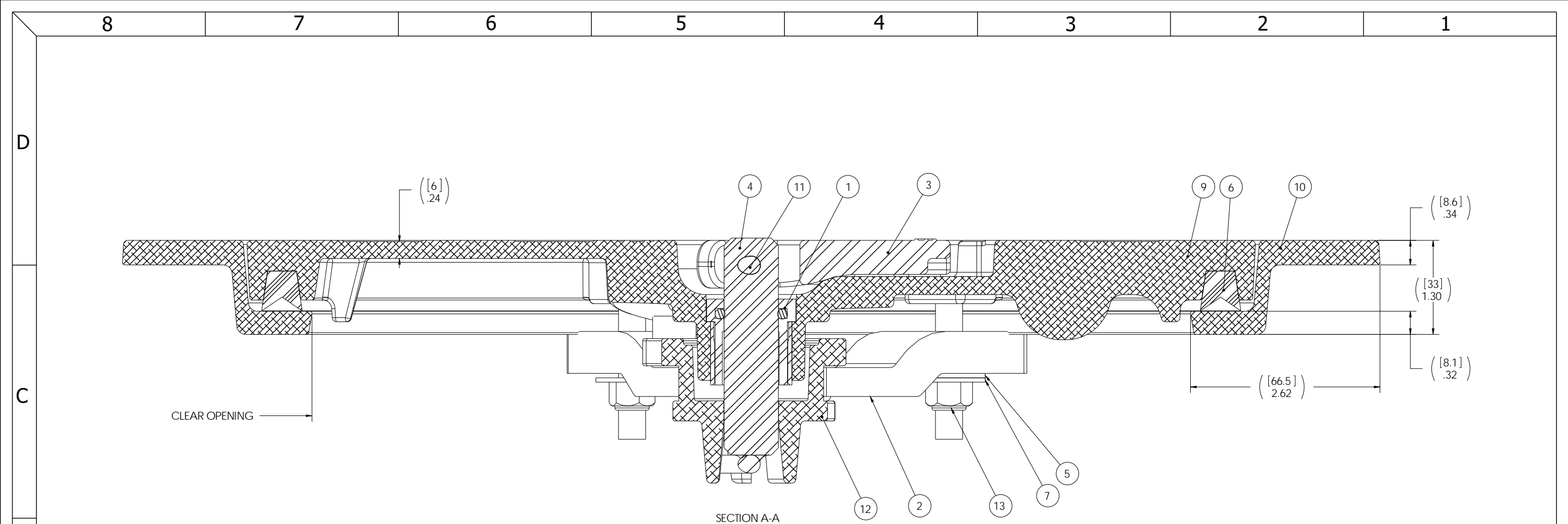
8 7 6 5 4 3 2 1

D  
C  
B  
A



- 8. FOR SPECIFIC INFORMATION CONTACT SALES.
  - 7. COMPLETE ASSEMBLY WEIGHT W/DECK RING, 13.54LBS/ 6.14K.
  - 6. DOGGING PRESSURE FULLY ADJUSTABLE.
  - 5. ALUMINUM ALLOY MECHANISM SHOWN.
  - 4. FLUSH, WATERTIGHT CONSTRUCTION.
  - 3. CAST ALUMINUM ALLOY FLANGE, FLANGE CAN BE DRILLED FOR BOLTED INSTALLATIONS OR WELDED TO ALUMINUM.
  - 2. QUICK-ACTING, MECHANISM ENGAGES OR DISENGAGES IN QUARTER-TURN OF CENTER SPINDLE.
  - 1. ALL DIMENSIONS SHOWN SUBJECT TO CASTING VARIATION.
- NOTES: UNLESS OTHERWISE SPECIFIED.

SPECIFICATIONS SUBJECT TO CHANGE WITHOUT NOTICE.		<b>FREEMAN</b> MARINE EQUIPMENT, INC.		28336 HUNTER CREEK ROAD GOLD BEACH, OR 97444 U.S.A. PHONE: 541-247-7078 FAX: 541-247-2114 www.freemanmarine.com	
PROJECTION		<small>CONFIDENTIAL PROPERTY OF FREEMAN MARINE EQUIPMENT INC. UNAUTHORIZED USE, COPYING OR DISTRIBUTION IS STRICTLY PROHIBITED. PERMISSION OF THIS DOCUMENT GRANTED TO THE FOREGOING AND SHALL RETURN THIS DOCUMENT UPON REQUEST.</small>		CLIENT: <b>FREEMAN MARINE</b>	
UNLESS OTHERWISE SPECIFIED DIMENSIONS ARE IN INCHES. TOLERANCES FOR ROUGH AND CLEAR OPENINGS: .125 INCH. ALL OTHERS ARE: .X .XX .XXX ANGLES ±.1 ±.03 ±.010 ±2°		DRAWN: S SNYDER DATE: 12 SEPT 08 CHECKED: P. CANCELLIERI DATE: 02DEC09 ENGR: DATE: DESIGN ACTIVITY: DATE: CONTRACT NO.:		TITLE: <b>HATCH: 12, AL COVER, AL RING</b>	
DO NOT SCALE DRAWING		SIZE: <b>D</b>		CAGE CODE: <b>64747</b> DRAWING NUMBER: <b>2402-0002</b> REV: -	
INITIAL RELEASE: 12 SEPT 08 SAS		SCALE: 1:2		CALC. WT. ACT. WT. SHEET 1 OF 3	



SECTION A-A

ITEM NO.	PART NUMBER	DESCRIPTION	MATERIAL	Default/OT Y.
13	0411-2032	NUT .375IN-16 SS 316 NYLOCK	SS 316/316L	3
12	0011-2004	HUB, AL, 8 & 12	REF. S/A - B.O.M.	1
11	0411-2002	PIN KNURLED .25 X 1.50IN SS 316	SS 316/316L	1
10	2402-1002	RING: 12" ALUMINUM	ALUMINUM, A356.0-F	1
9	2402-3001	COVER: 12 ALUM, FINISHED CASTING	ALUMINUM, A356.0-F	1
8	0411-2003	PIN KNURLED .25 X 1.125IN SS 316	STAINLESS STEEL 316/316L	3
7	0411-2101	WASHER FLAT .375IN SS 316	SS 316/316L	3
6	9801-2002	GASKET: 12 (3.42 FT. OF 0631-9801)	NEOPRENE, 50 DURO	1
5	0413-2078	WASHER, FLAT	NYLON TYPE 6 .406" X 1.0" X .062"	3
4	0021-2001	SHAFT ASSY, 8 & 12 HATCH HANDLE	STAINLESS STEEL	1
3	0212-2016	HANDLE, 8 & 12 HATCH	STAINLESS STEEL, 316L	1
2	0211-2001	DOG, LOCKING ARM, 12, AL	ALUMINUM, 535.2-F	3
1	0031-2002	BUSHING ASSY, 8 & 12 HATCH, W/ SLEEVE	REF. S/A - B.O.M.	1

REV.	DESCRIPTION:	DATE:	DRAWN
-	INITIAL RELEASE	12 SEPT 08	SAS

SPECIFICATIONS SUBJECT TO CHANGE WITHOUT NOTICE.

PROJECTION

UNLESS OTHERWISE SPECIFIED DIMENSIONS ARE IN INCHES. TOLERANCES FOR ROUGH AND CLEAR OPENINGS: .125 INCH. ALL OTHERS ARE:  
 .X .XX .XXX ANGLES  
 ±.1 ±.03 ±.010 ±2°

DO NOT SCALE DRAWING

**FREEMAN MARINE EQUIPMENT, INC.**  
 28336 HUNTER CREEK ROAD  
 GOLD BEACH, OR 97444 U.S.A.  
 PHONE: 541-247-7078 FAX: 541-247-2114  
 www.freemanmarine.com

CONFIDENTIAL PROPERTY OF FREEMAN MARINE EQUIPMENT INC. UNAUTHORIZED USE, COPYING OR DISTRIBUTION IS STRICTLY PROHIBITED. POSSESSION OF THIS DOCUMENT AGREES TO THE FOREGOING AND SHALL RETURN THIS DOCUMENT UPON REQUEST.

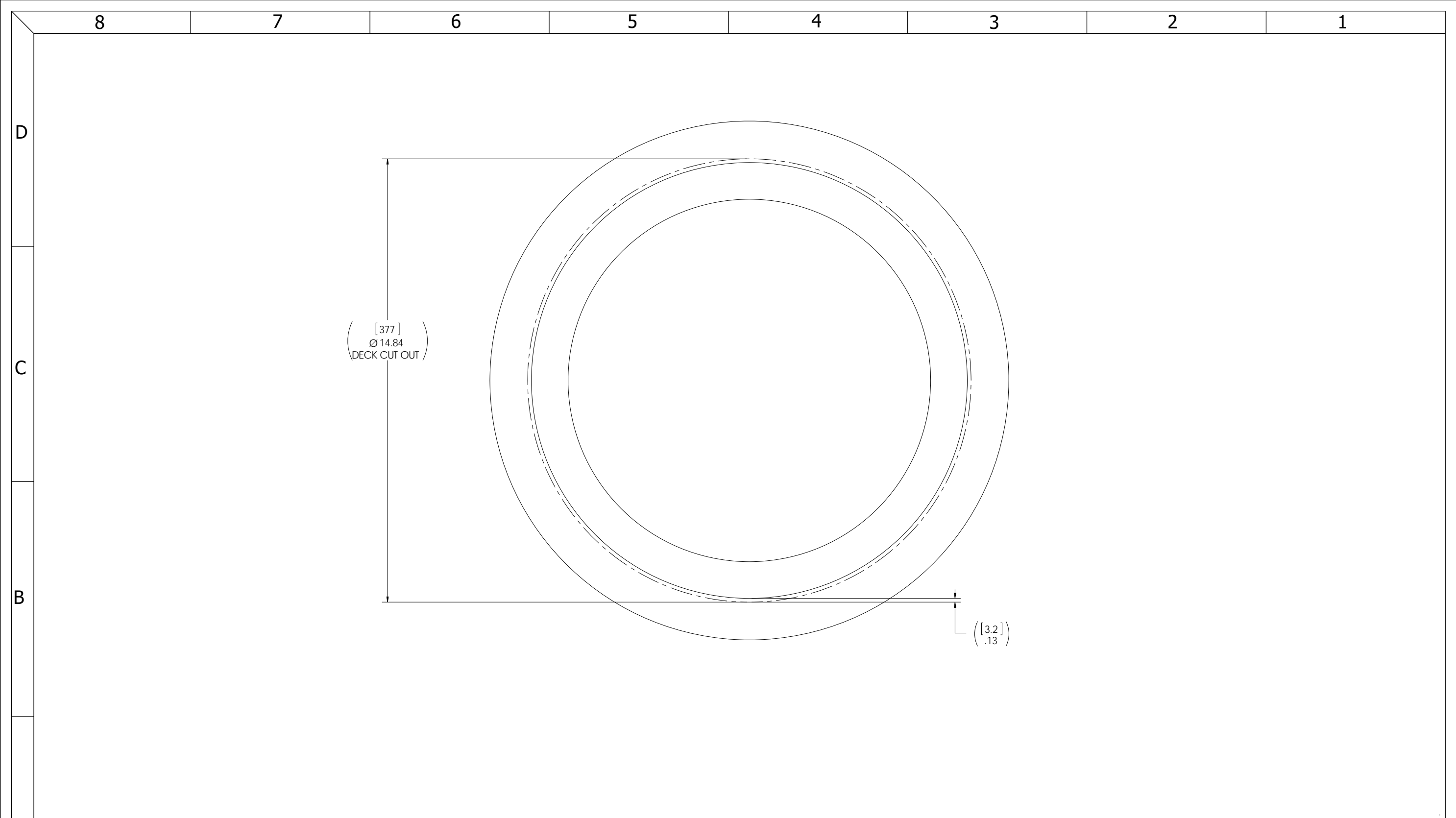
CLIENT: **FREEMAN MARINE**

TITLE: **HATCH: 12, AL COVER, AL RING**

SCALE: 1.5:1

SIZE: **D** CAGE CODE: **64747** DRAWING NUMBER: **2402-0002** REV. **-**

CONTRACT NO.: \_\_\_\_\_



- 3. FINISH: 125 RMS MAX.
- 2. BREAK SHARP EDGES AND DEBURR.
- 1. MATERIAL: ALUMINUMREF. S/A - B.O.M.

NOTES: UNLESS OTHERWISE SPECIFIED.

**CUSTOMER APPROVAL**

Signature: \_\_\_\_\_  
 Date: \_\_\_\_\_

IMPORTANT! THIS DRAWING SUPERSEDES ALL OTHER DOCUMENTS. By signing this approval you accept and agree that the dimensions and details shown are correct and properly fit your application, regardless of any differences between this drawing and any contract specifications. Should you see any errors in the drawing, or have any questions, please contact your Freeman Marine sales engineer for clarification.

REV.	DESCRIPTION:	DATE:	DRAWN
-	INITIAL RELEASE	12 SEPT 08	SAS

SPECIFICATIONS SUBJECT TO CHANGE WITHOUT NOTICE.

PROJECTION

UNLESS OTHERWISE SPECIFIED DIMENSIONS ARE IN INCHES. TOLERANCES FOR ROUGH AND CLEAR OPENINGS: .125 INCH. ALL OTHERS ARE:  
 .X .XX .XXX ANGLES  
 ±.1 ±.03 ±.010 ±2°

DO NOT SCALE DRAWING

<b>FREEMAN</b> MARINE EQUIPMENT, INC.		28336 HUNTER CREEK ROAD GOLD BEACH, OR 97444 U.S.A. PHONE: 541-247-7078 FAX: 541-247-2114 www.freemanmarine.com	
		CLIENT:	<b>FREEMAN MARINE</b>
<small>CONFIDENTIAL PROPERTY OF FREEMAN MARINE EQUIPMENT, INC. UNAUTHORIZED USE, REPRODUCTION OR DISTRIBUTION IS STRICTLY PROHIBITED. ALL COPIES REMAIN THE PROPERTY OF FREEMAN MARINE EQUIPMENT, INC. AND MUST BE RETURNED UPON REQUEST.</small> <small>© ALL RIGHTS RESERVED 2012, FREEMAN MARINE EQUIPMENT, INC.</small>		TITLE:	<b>HATCH: 12, AL RING</b>
DRAWN: S SNYDER CHECKED: P. CANCELLIERI ENGR: DESIGN ACTIVITY: CONTRACT NO.:	DATE: 12 SEPT 08 DATE: 02DEC09 DATE:	SIZE <b>D</b>	CAGE CODE <b>64747</b> DRAWING NUMBER <b>2402-1002</b> SCALE: 2:3 CALC. WT. ACT. WT.
		REV.	-
		SHEET 1 OF 1	