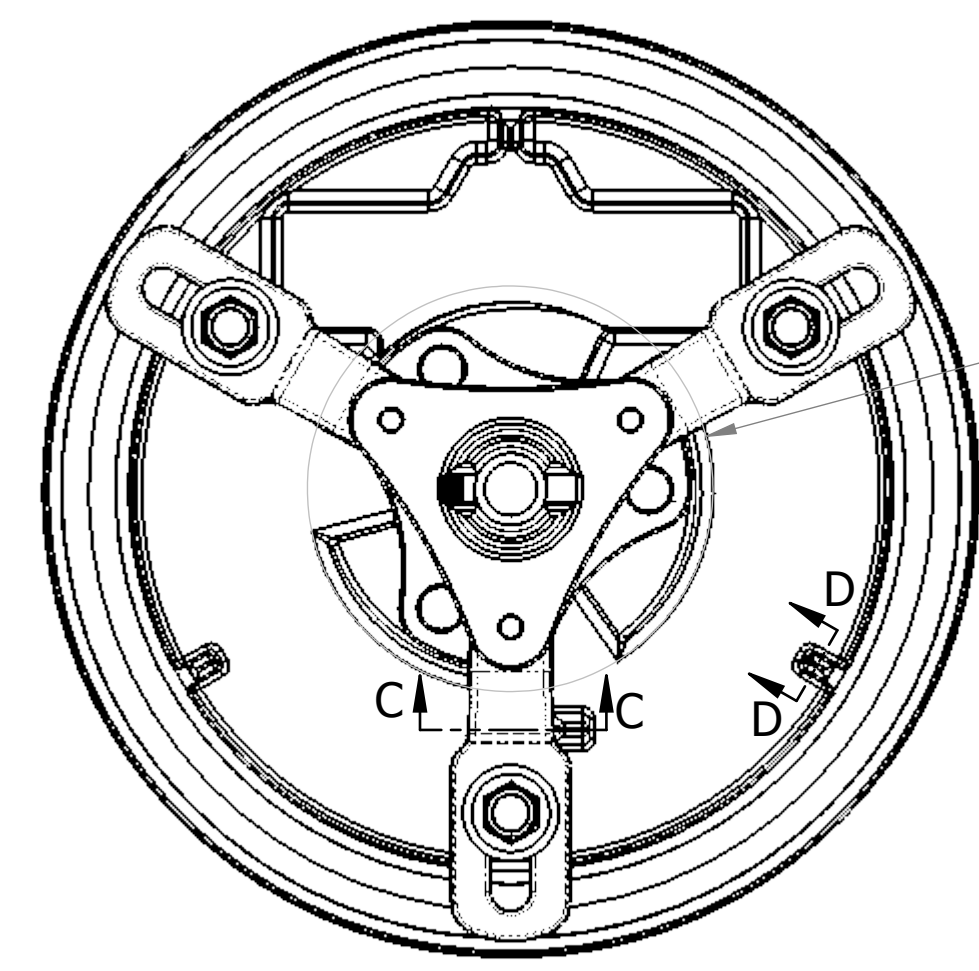
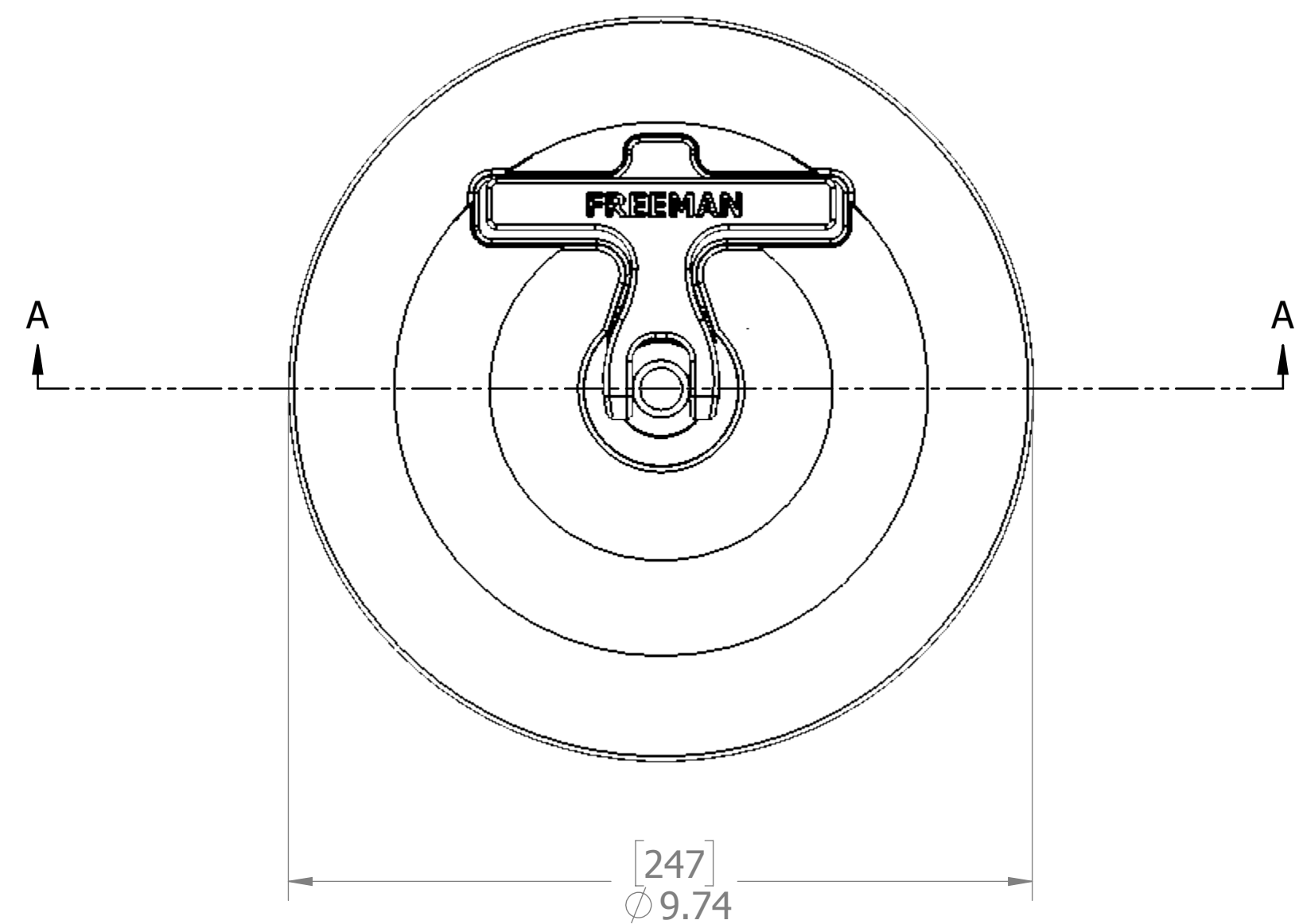
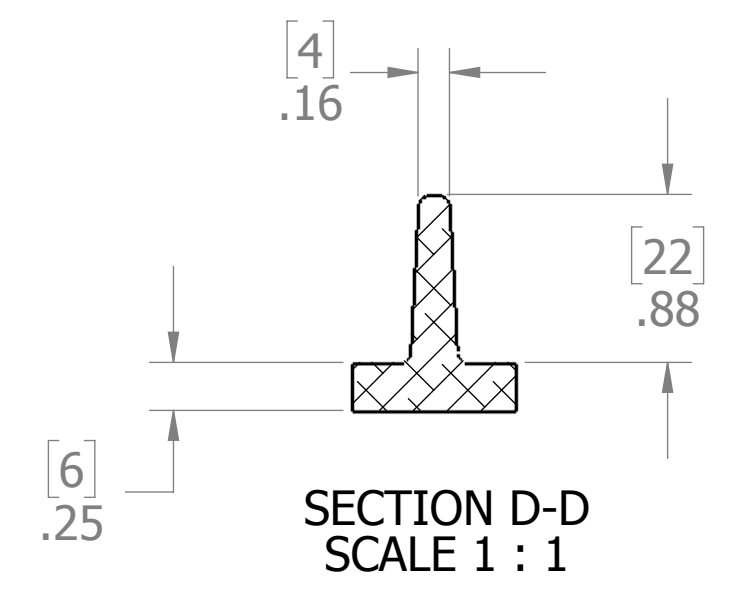
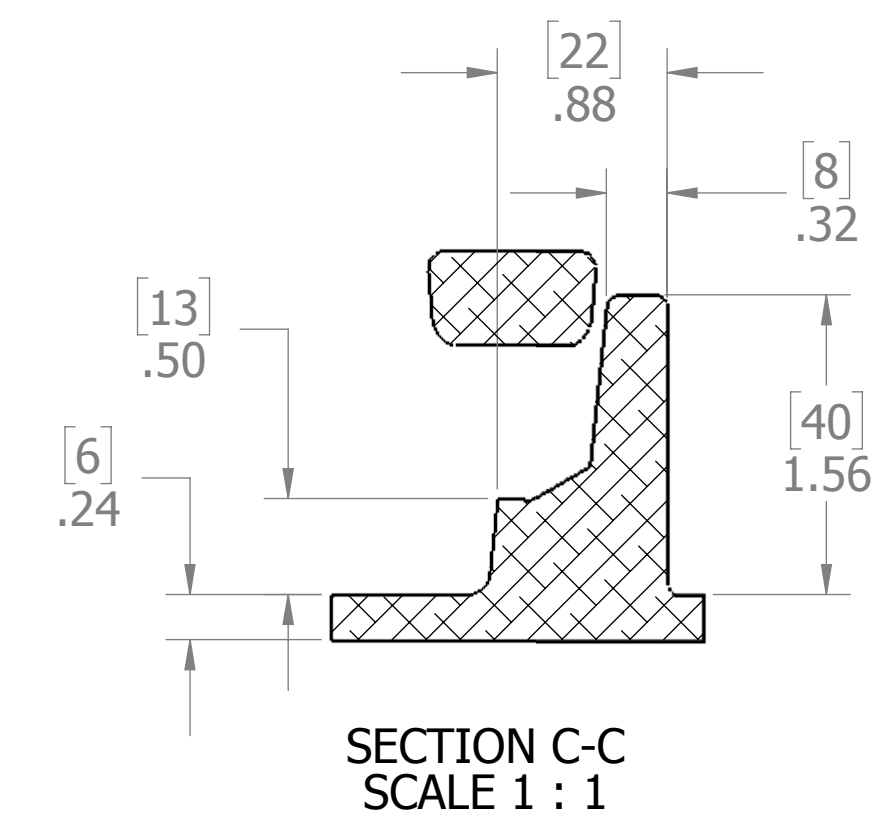


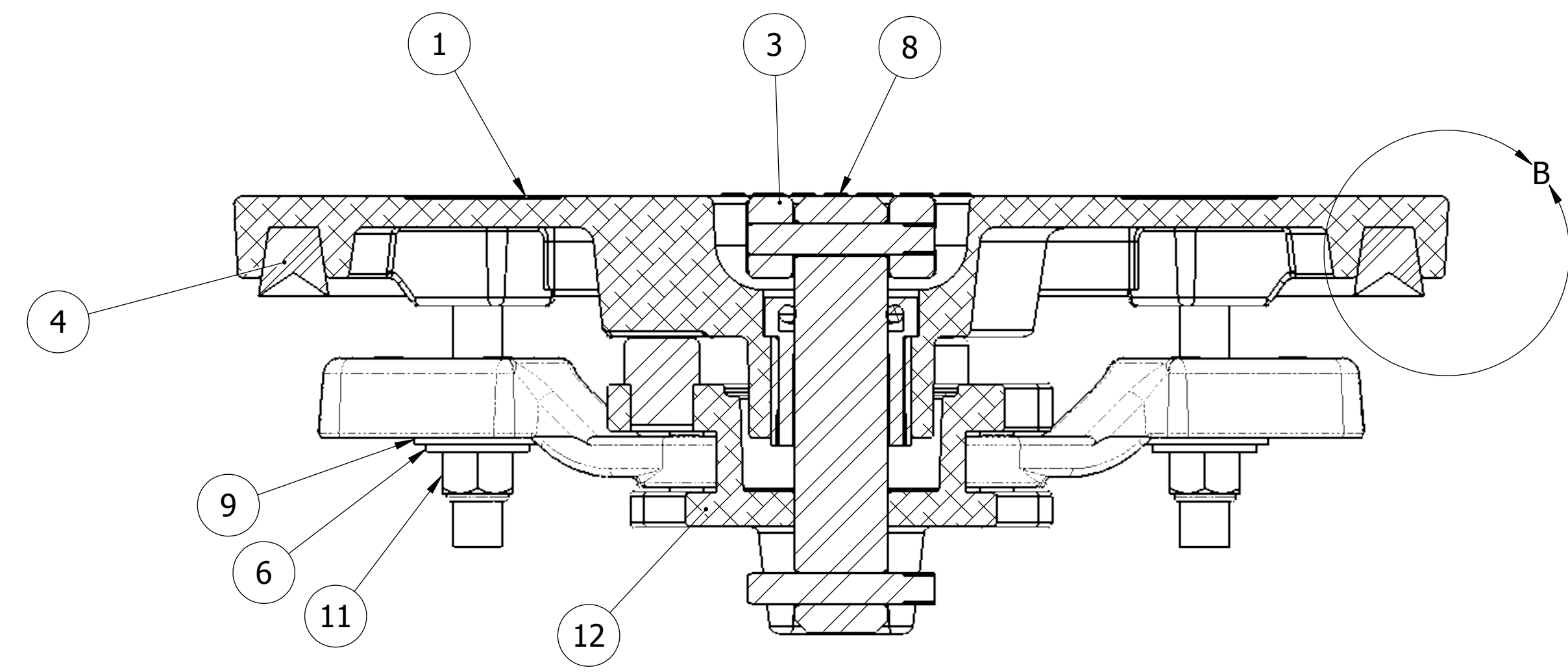
D



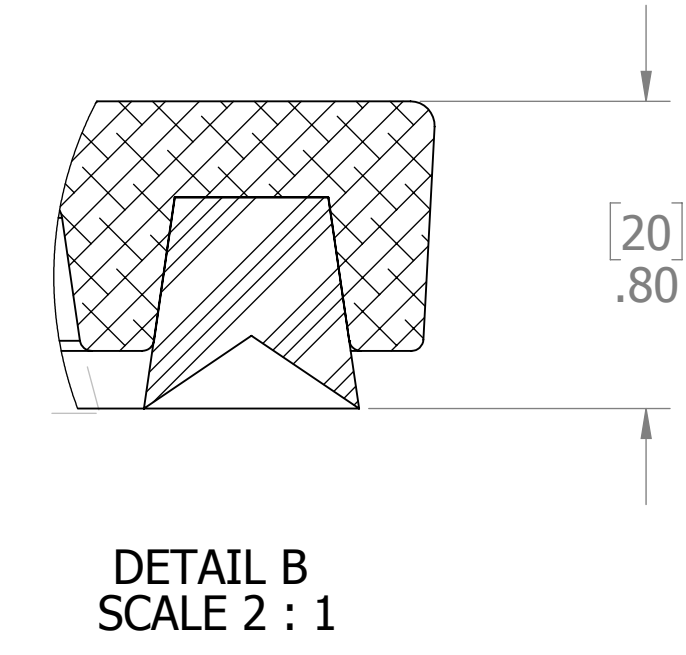
[107]
4 1/4"
APPROX



C



SECTION A-A
SCALE 1 : 1



DETAIL B
SCALE 2 : 1

- 8. FOR SPECIFIC INFORMATION CONTACT FREEMAN MARINE SALES.
- 7. ALUMINUM ALLOY MECHANISM ONLY,
- 6. DOGGING PRESSURE FULLY ADJUSTABLE.
- 5. FLUSH, WATERTIGHT CONSTRUCTION.
- 4. HANDLE POSITION TOPSIDE INDICATES WHETHER DOGGING MECHANISM IS IN OPEN OR CLOSED POSITION.
- 2. QUICK-ACTING, MECHANISM ENGAGES OR DISENGAGES IN QUARTER-TURN OF CENTER SPINDLE.
- 1. 8.0" DIAMETER CLEAR OPENING, ALL DIMENSIONS SHOWN SUBJECT TO CASTING VARIATION AND ARE REFERENCE ONLY.

NOTES: UNLESS OTHERWISE SPECIFIED

A

ITEM NO.	QTY.	PART NUMBER	DESCRIPTION	MATERIAL
12	1	0011-2004	HUB, AL, 8 & 12	REF. S/A - B.O.M.
11	3	0411-2032	NUT .375IN NYLOCK	316/316L
10	3	0411-2003	PIN KNURLED .25 X 1.125IN SS 316	STAINLESS STEEL 316/316L
9	3	0413-2002	WASHER, .406 X 1.000 X .062	NYLON TYPE 6
8	1	0021-2001	SHAFT ASSY, 8 & 12 HATCH HANDLE	STAINLESS STEEL
7	1	0411-2002	PIN KNURLED .25 X 1.50IN SS 316	SS 316/316L
6	3	0411-2101	WASHER, FLAT .406 X 1 X .05IN	SS 316/316L
5	3	0211-2016	DOG, LOCKING ARM 8, AL	535.2-F
4	1	9801-2001	GASKET: 8 (2.36 FT. OF 0631-9801)	NEOPRENE, 50 DURO
3	1	0212-2016	HANDLE, 8 & 12 HATCH	STAINLESS STEEL, 316L
2	1	0031-2319	BUSHING ASSY, W/ O-RING	REF. S/A - B.O.M.
1	1	2401-3001	COVER 8IN. CAST HATCH	A356.0-F

SPECIFICATIONS SUBJECT TO CHANGE WITHOUT NOTICE.		FREEMAN MARINE EQUIPMENT, INC.		28336 HUNTER CREEK ROAD GOLD BEACH, OR 97444 U.S.A. PHONE: 541-247-7078 FAX: 541-247-2114 www.freemanmarine.com	
PROJECTION		UNLESS OTHERWISE SPECIFIED DIMENSIONS ARE IN INCHES, TOLERANCES FOR ROUGH AND CLEAR OPENING ± .125 INCH. ALL OTHERS ARE:		CLIENT: FREEMAN MARINE	
.X .XX .XXX ANGLES ±.1 ±.03 ±.010 ±2°		DO NOT SCALE DRAWING		TITLE: HATCH, 8 INCH ROUND	
01 REMOVED NOTES 3/1/19 ZC		00 PRODUCTION RELEASE 2/28/19 ZC		SIZE: D CAGE CODE: 64747 DRAWING NUMBER: 2401-1001 REV. 01	
REV. DESCRIPTION: DATE: DRAWN		CONTRACT NO.:		SCALE: 1:5 CALC. WT. ACT. WT. SHEET 1 OF 1	