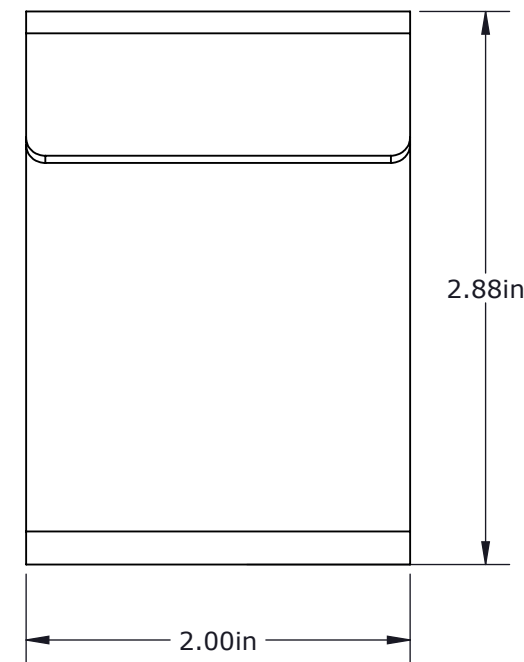
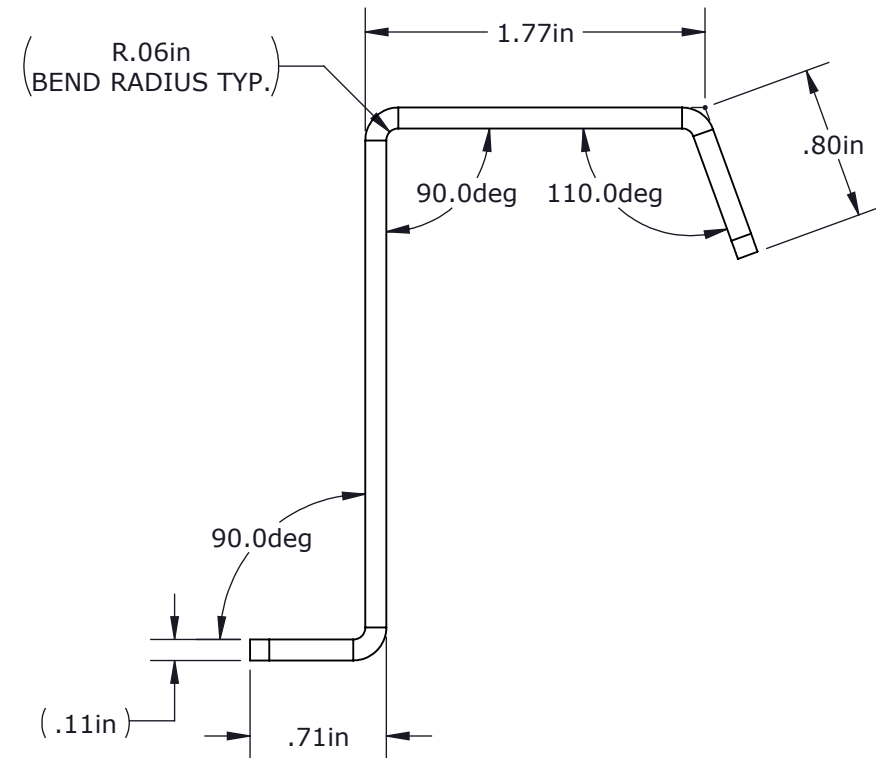
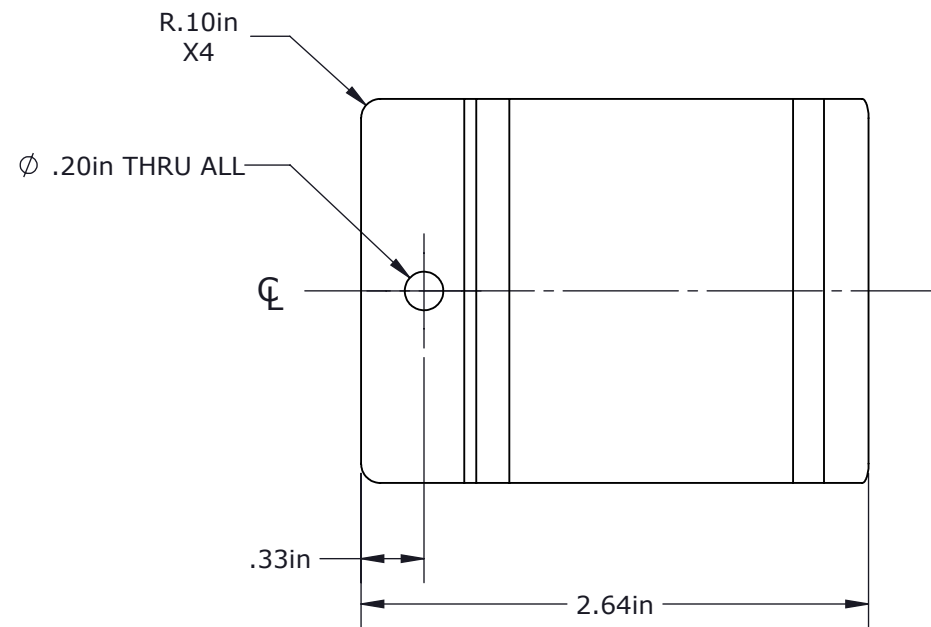
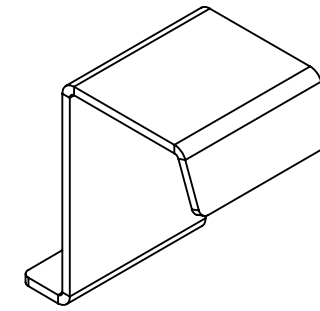


MATERIAL

12GA 316 SS

REVISIONS

REV.	DESCRIPTION	BY	DATE
0	INITIAL RELEASE	GG	2/25/19



GENERAL NOTES

- REMOVE ALL BURRS AND BREAK SHARP EDGES AND CORNERS .75mm [.03in] MAX.

UNLESS OTHERWISE SPECIFIED, DIMENSIONS ARE IN MILLIMETERS. TOLERANCES FOR ROUGH AND CLEAR OPENINGS ARE ±3mm (.125"). ALL OTHERS ARE:

	X	.X	.XX	ANGLES
METRIC	±2.5	±.8	±.25	±2°
IMPERIAL	.X	.XX	.XXX	ANGLES
	±.1	±.03	±.010	±2°

BAR CODE	CAGE CODE
----------	-----------



COPYRIGHT 2016 ADVANTEC GLOBAL INNOVATIONS. ALL RIGHTS RESERVED. CONFIDENTIAL PROPERTY OF ADVANTEC GLOBAL INNOVATIONS. UNAUTHORIZED USE, REPRODUCTION OR DISTRIBUTION IS STRICTLY PROHIBITED. COPIES REMAIN THE PROPERTY OF ADVANTEC GLOBAL INNOVATIONS AND MUST BE RETURNED UPON REQUEST.

DWG TITLE  
**CLIP 316 M 12GA 425 EXT FC.  
 25IN WALL**

SCALE	DRAWN	DATE	CHECKED	DATE	SIZE
1:1	GG	2/25/19			B
S.O. NO	DWG NO	SHEET	REV		
	109176	1 of 1			