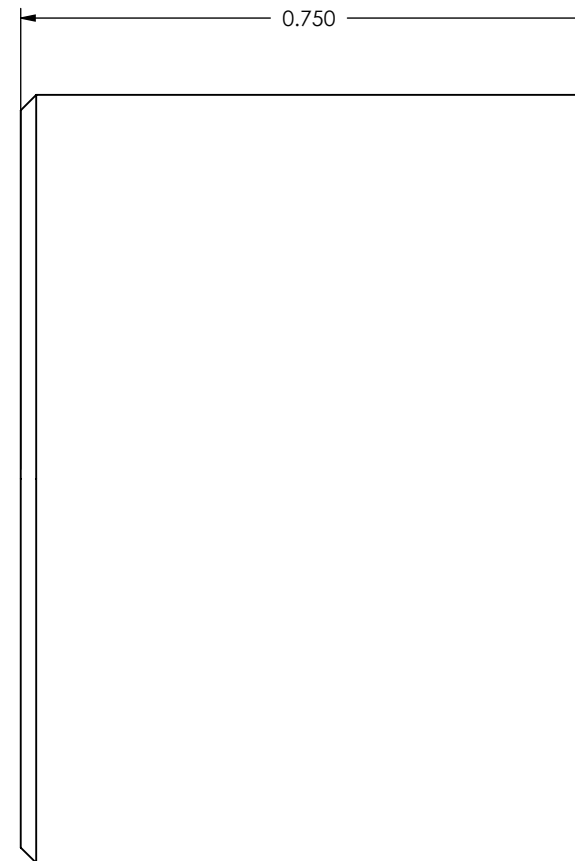
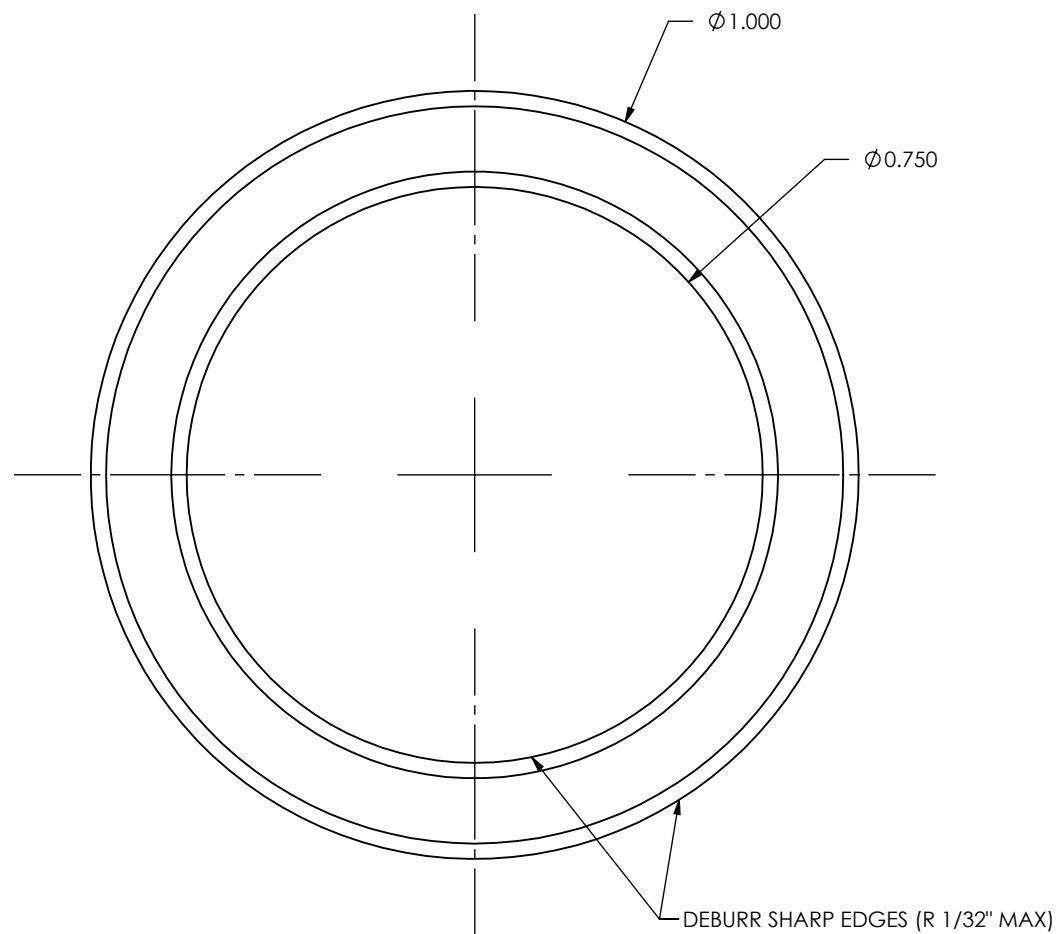
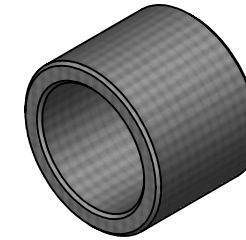


ITEM	QTY	PART NUMBER	LEGACY	DESCRIPTION	MATERIAL
1	1	106093	WD06-E0107 \ ES10-E0107 \ SM08-E0106	BUSH FCJ GRN .75ID 1ODx.750	FCJ



REVISIONS

REV.	DESCRIPTION	BY	DATE
00	EPDM MIGRATION RELEASE WITH VISUAL PART ID	DEC	2023/05/17

GENERAL NOTES

1. THIS PART REPLACES SM08-E0106
2. REMOVE ALL BURRS AND BREAK SHARP EDGES AND CORNERS .75mm [.03in] MAX.

UNLESS OTHERWISE SPECIFIED, DIMENSIONS ARE IN INCHES. TOLERANCES FOR ROUGH AND CLEAR OPENINGS ARE $\pm 3\text{mm}$ (.125"). ALL OTHERS ARE:

METRIC	X	.X	.XX	ANGLES
	± 1.25	$\pm .4$	$\pm .125$	$\pm 1^\circ$
IMPERIAL	.X	.XX	.XXX	ANGLES
	$\pm .03$	$\pm .015$	$\pm .005$	$\pm 1^\circ$



COPYRIGHT 2016 ADVANTEC GLOBAL INNOVATIONS. ALL RIGHTS RESERVED. CONFIDENTIAL PROPERTY OF ADVANTEC GLOBAL INNOVATIONS. UNAUTHORIZED USE, REPRODUCTION OR DISTRIBUTION IS STRICTLY PROHIBITED. COPIES REMAIN THE PROPERTY OF ADVANTEC GLOBAL INNOVATIONS AND MUST BE RETURNED UPON REQUEST.

DWG TITLE
BUSH FCJ GRN .75ID 1ODx.750

LEGACY
WD06-E0107 \ ES10-E0107 \ SM08-W0106

SCALE	DRAWN	DATE	CHECKED	DATE	SIZE
2:1	D. GATLE	08/12/2003		1800-01-02	B
		DWG NO		SHEET	REV
		106093		1	1
				of	
				1	

